

France - Times Series Year ending June 2006 - 2011

By stopover reason for visit

Holiday visitors ('000)	State visited	Year ending June 2006	Year ending June 2007	Year ending June 2008	Year ending June 2009	Year ending June 2010	Year ending June 2011
		New South Wales	31	33	38	41	48
	Victoria	11	16	18	20	22	23
	Queensland	25	25	28	34	36	30
	Total	43	46	53	60	66	64

Market share of holiday visitors (per cent)	State visited	Year ending June 2006	Year ending June 2007	Year ending June 2008	Year ending June 2009	Year ending June 2010	Year ending June 2011
		New South Wales	72.4	72.0	70.8	67.5	72.2
	Victoria	25.5	35.7	33.6	33.1	32.6	35.4
	Queensland	57.2	54.5	52.6	56.3	54.2	46.4

Holiday visitor nights ('000)	State visited	Year ending June 2006	Year ending June 2007	Year ending June 2008	Year ending June 2009	Year ending June 2010	Year ending June 2011
		New South Wales	354	657	591	857	1,017
	Victoria	131	344	379	421	444	403
	Queensland	298	442	558	826	805	745
	Total	1,106	1,996	2,035	2,857	3,013	2,741

Market share of holiday visitor nights (per cent)	State visited	Year ending June 2006	Year ending June 2007	Year ending June 2008	Year ending June 2009	Year ending June 2010	Year ending June 2011
		New South Wales	32.0	32.9	29.0	30.0	33.7
	Victoria	11.9	17.2	18.6	14.7	14.7	14.7
	Queensland	27.0	22.2	27.4	28.9	26.7	27.2

VFR visitors ('000)	State visited	Year ending June 2006	Year ending June 2007	Year ending June 2008	Year ending June 2009	Year ending June 2010	Year ending June 2011
		New South Wales	9	8	8	9	10
	Victoria	4	5	6	8	8	8
	Queensland	5	4	4	5	8	6
	Total	19	18	20	23	27	23

Market share of VFR visitors (per cent)	State visited	Year ending June 2006	Year ending June 2007	Year ending June 2008	Year ending June 2009	Year ending June 2010	Year ending June 2011
		New South Wales	47.6	46.7	40.3	37.8	37.2
	Victoria	21.1	25.0	27.4	33.0	28.6	32.2
	Queensland	25.4	19.4	20.4	20.6	29.3	27.0

VFR visitor nights ('000)	State visited	Year ending June 2006	Year ending June 2007	Year ending June 2008	Year ending June 2009	Year ending June 2010	Year ending June 2011
		New South Wales	121	124	150	90	133
	Victoria	60	90	138	99	111	156
	Queensland	47	44	57	96	103	103
	Total	315	343	452	391	452	543

Market share of VFR visitor nights (per cent)	State visited	Year ending June 2006	Year ending June 2007	Year ending June 2008	Year ending June 2009	Year ending June 2010	Year ending June 2011
		New South Wales	38.4	36.1	33.1	23.0	29.4
	Victoria	19.1	26.3	30.6	25.4	24.6	28.7
	Queensland	15.0	12.8	12.6	24.5	22.8	18.9

Source: International Visitor Survey.

Base: All visitors aged 15 years and over travel grid completed.

France - Times Series Year ending June 2006 - 2011

Business visitors ('000)	State visited	Year ending June 2006	Year ending June 2007	Year ending June 2008	Year ending June 2009	Year ending June 2010	Year ending June 2011
		New South Wales	5	6	4	6	7
	Victoria	3	4	3	2	4	3
	Queensland	1	2	3	2	2	3
	Total	10	12	11	11	11	10

Market share of business visitors (per cent)	State visited	Year ending June 2006	Year ending June 2007	Year ending June 2008	Year ending June 2009	Year ending June 2010	Year ending June 2011
		New South Wales	51.0	53.4	35.5	54.4	57.0
	Victoria	28.0	32.8	31.8	20.2	37.7	31.6
	Queensland	10.0	18.1	27.1	14.9	16.7	29.5

Business visitor nights ('000)	State visited	Year ending June 2006	Year ending June 2007	Year ending June 2008	Year ending June 2009	Year ending June 2010	Year ending June 2011
		New South Wales	42	104	39	60	54
	Victoria	35	38	30	19	51	20
	Queensland	12	16	38	17	13	46
	Total	136	239	128	126	148	179

Market share of business visitor nights (per cent)	State visited	Year ending June 2006	Year ending June 2007	Year ending June 2008	Year ending June 2009	Year ending June 2010	Year ending June 2011
		New South Wales	30.6	43.6	30.6	47.5	36.3
	Victoria	25.7	15.9	23.0	14.7	34.7	11.4
	Queensland	9.1	6.5	29.9	13.2	8.4	26.0

Education visitors ('000)	State visited	Year ending June 2006	Year ending June 2007	Year ending June 2008	Year ending June 2009	Year ending June 2010	Year ending June 2011
		New South Wales	1.1	2.4	2.2	2.2	3.6
	Victoria	0.9	0.7	0.8	1.0	0.5	1.7
	Queensland	0.9	1.9	1.4	1.9	3.2	1.9
	Total	3.4	5.6	5.1	6.2	8.2	7.5

Market share of Education visitors (per cent)	State visited	Year ending June 2006	Year ending June 2007	Year ending June 2008	Year ending June 2009	Year ending June 2010	Year ending June 2011
		New South Wales	32.4	42.9	43.1	35.5	43.9
	Victoria	26.5	12.5	15.7	16.1	6.1	22.7
	Queensland	26.5	33.9	27.5	30.6	39.0	25.3

Education visitor nights ('000)	State visited	Year ending June 2006	Year ending June 2007	Year ending June 2008	Year ending June 2009	Year ending June 2010	Year ending June 2011
		New South Wales	130	196	227	254	256
	Victoria	147	89	82	108	75	160
	Queensland	44	185	113	135	334	207
	Total	445	539	518	616	769	856

Market share of Education visitor nights (per cent)	State visited	Year ending June 2006	Year ending June 2007	Year ending June 2008	Year ending June 2009	Year ending June 2010	Year ending June 2011
		New South Wales	29.1	36.4	43.9	41.3	33.3
	Victoria	33.1	16.5	15.9	17.5	9.7	18.7
	Queensland	10.0	34.2	21.8	21.8	43.4	24.1

Employment visitors ('000)	State visited	Year ending June 2006	Year ending June 2007	Year ending June 2008	Year ending June 2009	Year ending June 2010	Year ending June 2011
		New South Wales	0.9	1.4	1.0	1.8	1.5
	Victoria	1.0	1.4	0.4	1.4	2.4	1.6
	Queensland	0.1	0.9	0.9	0.8	1.9	1.0
	Total	2.3	3.6	3.6	3.7	7.0	5.0

Market share of Employment visitors (per cent)	State visited	Year ending June 2006	Year ending June 2007	Year ending June 2008	Year ending June 2009	Year ending June 2010	Year ending June 2011
		New South Wales	39.1	38.9	27.8	48.6	21.4
	Victoria	43.5	38.9	11.1	37.8	34.3	32.0
	Queensland	4.3	25.0	25.0	21.6	27.1	20.0



France - Times Series Year ending June 2006 - 2011

		Year ending June 2006	Year ending June 2007	Year ending June 2008	Year ending June 2009	Year ending June 2010	Year ending June 2011
Employment visitor nights (’000)	State visited						
	New South Wales	62	177	27	209	183	216
	Victoria	42	106	41	61	131	149
	Queensland	7	89	92	68	70	136
	Total	178	482	267	382	617	575

		Year ending June 2006	Year ending June 2007	Year ending June 2008	Year ending June 2009	Year ending June 2010	Year ending June 2011
Market share of Employment visitor nights (per cent)	State visited						
	New South Wales	34.7	36.7	10.0	54.6	29.7	37.5
	Victoria	23.6	22.0	15.4	15.9	21.3	25.9
	Queensland	3.8	18.6	34.5	17.9	11.3	23.7

		Year ending June 2006	Year ending June 2007	Year ending June 2008	Year ending June 2009	Year ending June 2010	Year ending June 2011
Total visitors (’000)	State visited						
	New South Wales	43.0	45.5	48.9	59.5	66.7	58.3
	Victoria	18.5	24.6	26.7	28.4	32.5	32.4
	Queensland	28.0	28.8	33.4	38.3	43.1	36.1
	Total	61.4	65.8	73.1	85.1	93.3	89.4

		Year ending June 2006	Year ending June 2007	Year ending June 2008	Year ending June 2009	Year ending June 2010	Year ending June 2011
Market share of total visitors (per cent)	State visited						
	New South Wales	70.0	69.1	66.9	69.9	71.5	65.2
	Victoria	30.1	37.4	36.5	33.4	34.8	36.2
	Queensland	45.6	43.8	45.7	45.0	46.2	40.4

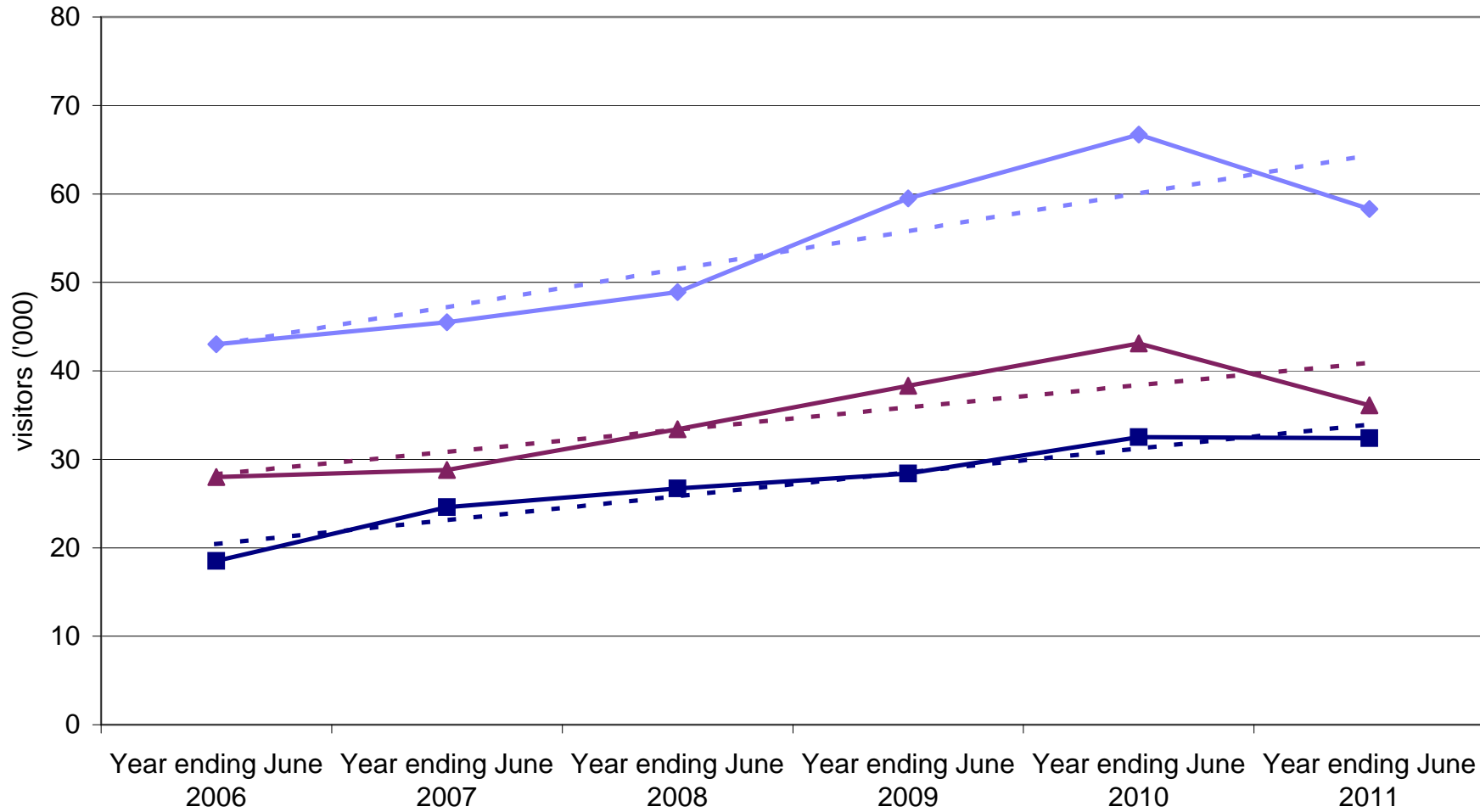
		Year ending June 2006	Year ending June 2007	Year ending June 2008	Year ending June 2009	Year ending June 2010	Year ending June 2011
Total visitor nights (’000)	State visited						
	New South Wales	717	1,260	1,044	1,501	1,650	1,696
	Victoria	434	672	672	712	815	889
	Queensland	438	777	860	1,144	1,328	1,239
	Total	2,273	3,627	3,431	4,444	5,043	4,928

		Year ending June 2006	Year ending June 2007	Year ending June 2008	Year ending June 2009	Year ending June 2010	Year ending June 2011
Market share of total visitor nights (per cent)	State visited						
	New South Wales	31.5	34.7	30.4	33.8	32.7	34.4
	Victoria	19.1	18.5	19.6	16.0	16.2	18.0
	Queensland	19.3	21.4	25.0	25.7	26.3	25.1

Source: International Visitor Survey.

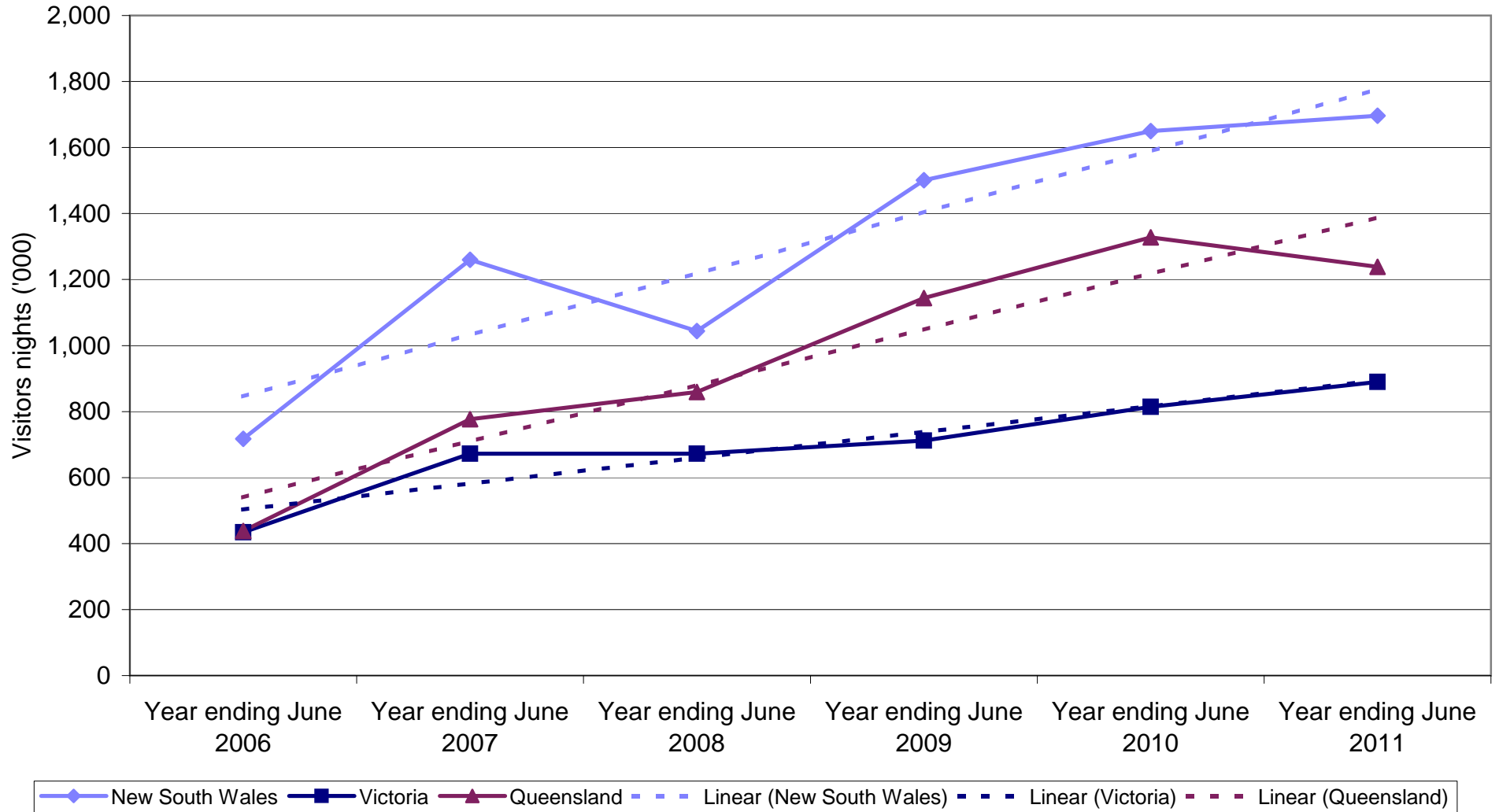
Base: All visitors aged 15 years and over travel grid completed.

French visitors by State visited

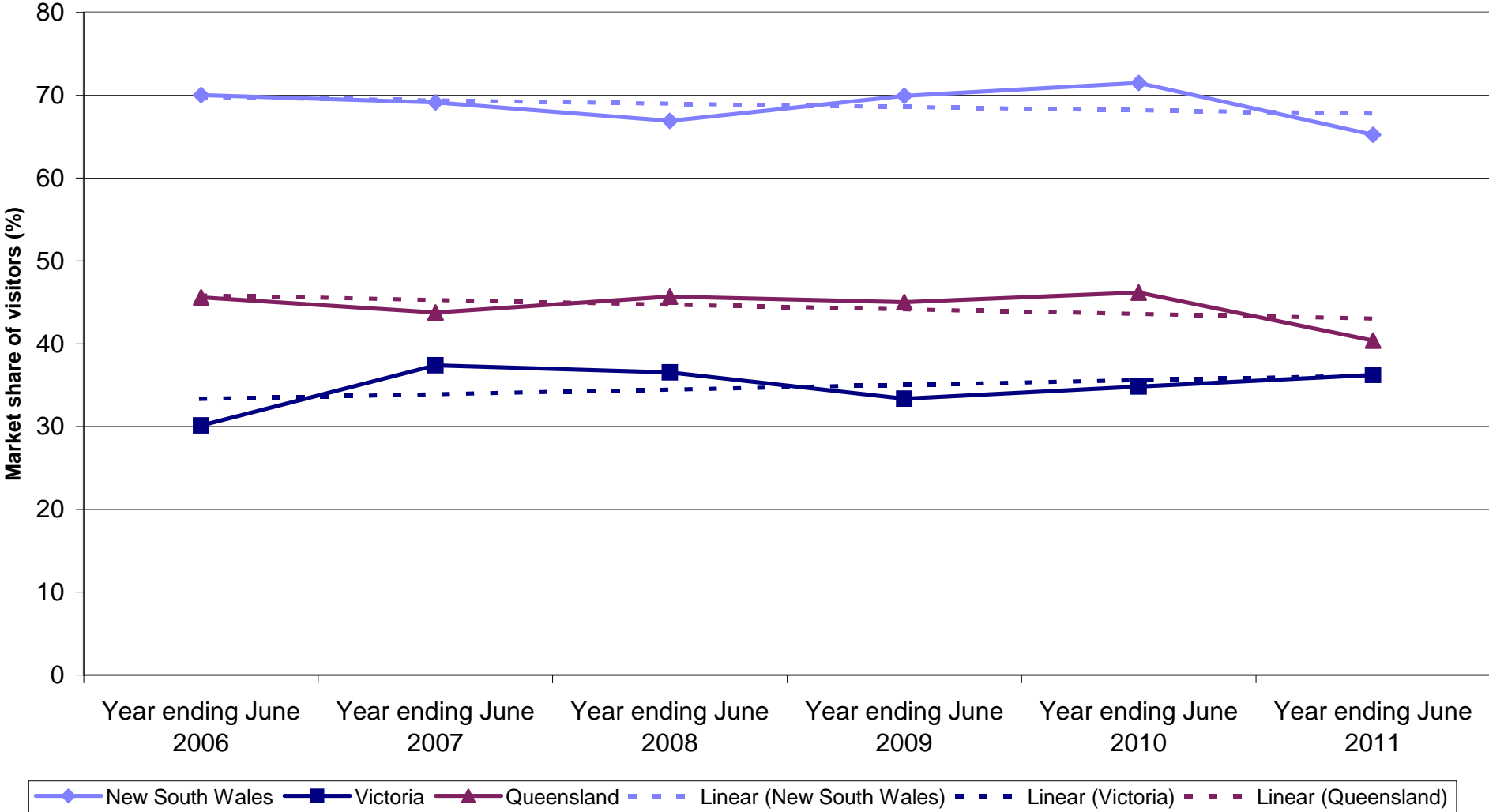


Legend: New South Wales (solid blue line with diamond markers), Victoria (solid dark blue line with square markers), Queensland (solid maroon line with triangle markers), Linear (New South Wales) (dashed light blue line), Linear (Victoria) (dashed dark blue line), Linear (Queensland) (dashed maroon line).

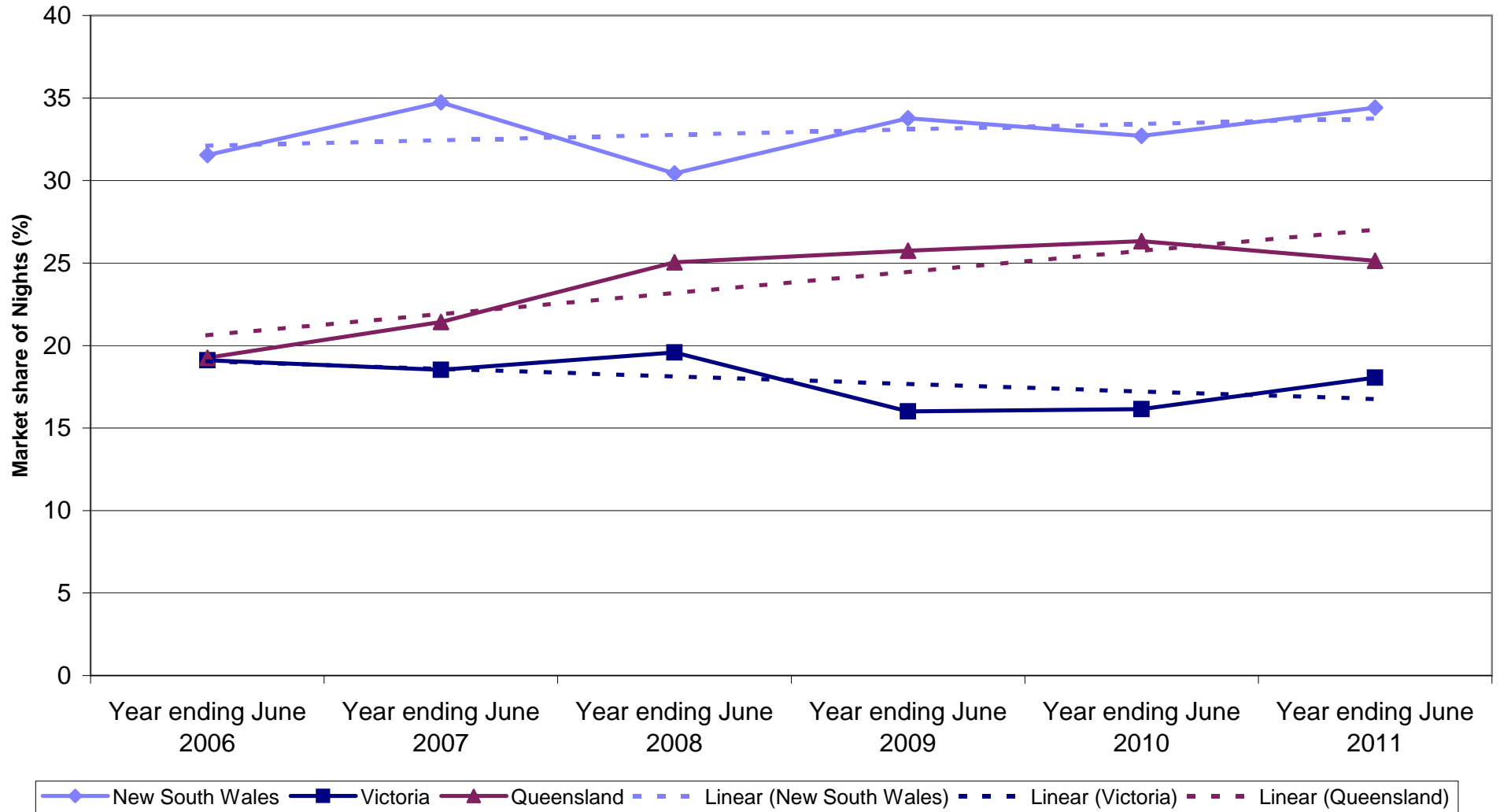
French nights by State visited



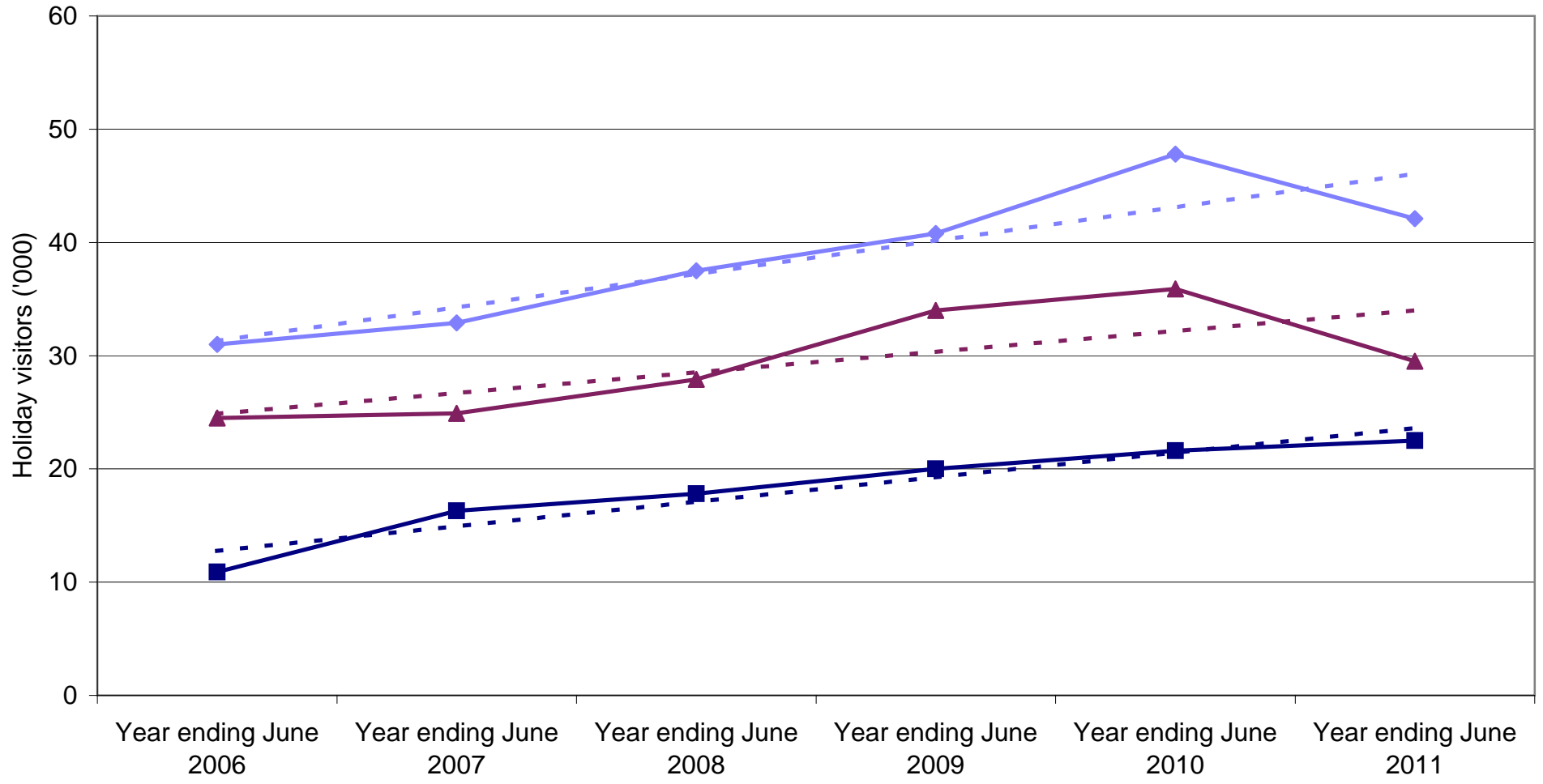
State market share of French visitors to Australia



State market share of French nights to Australia

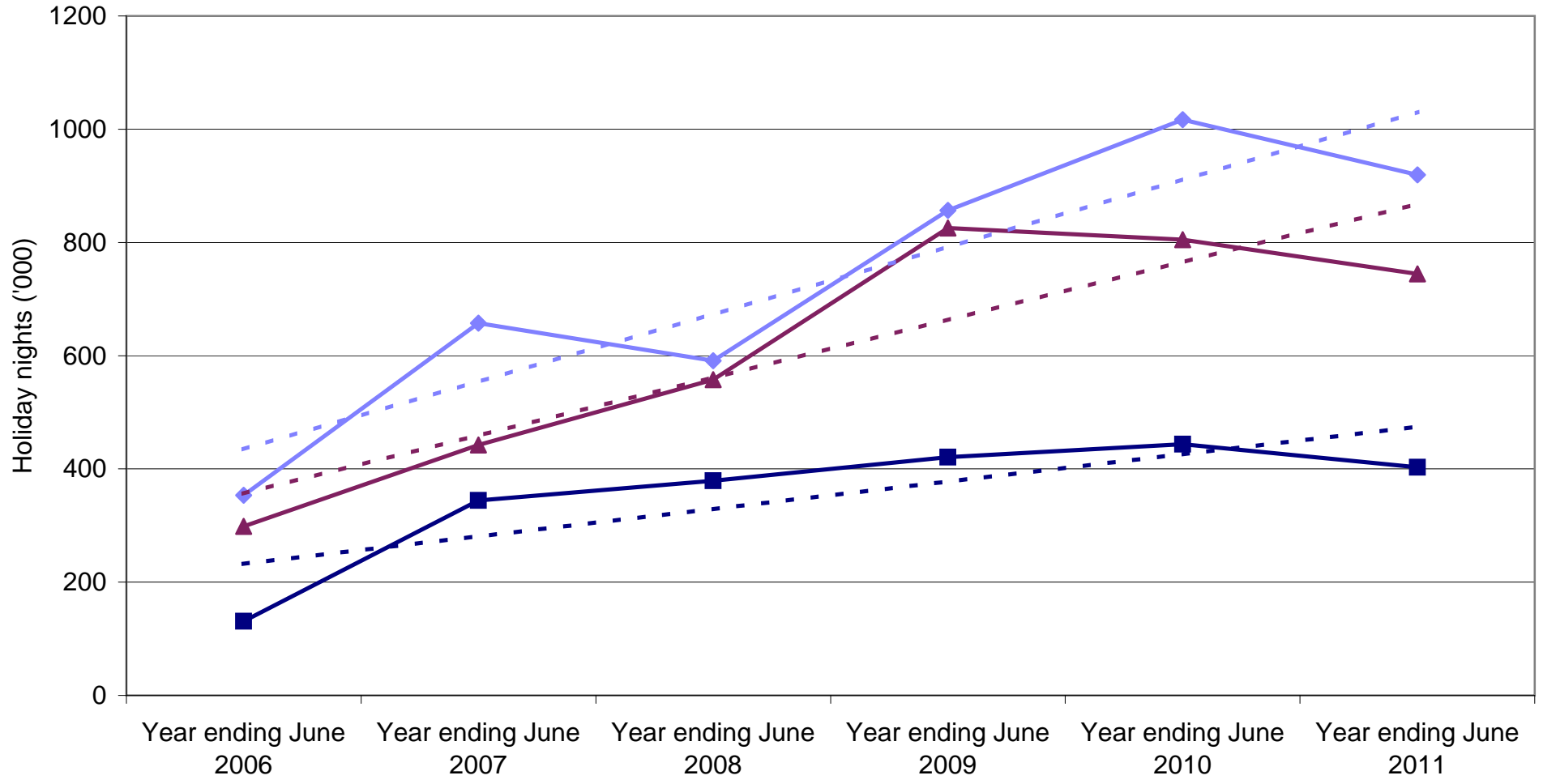


French holiday visitors by State visited



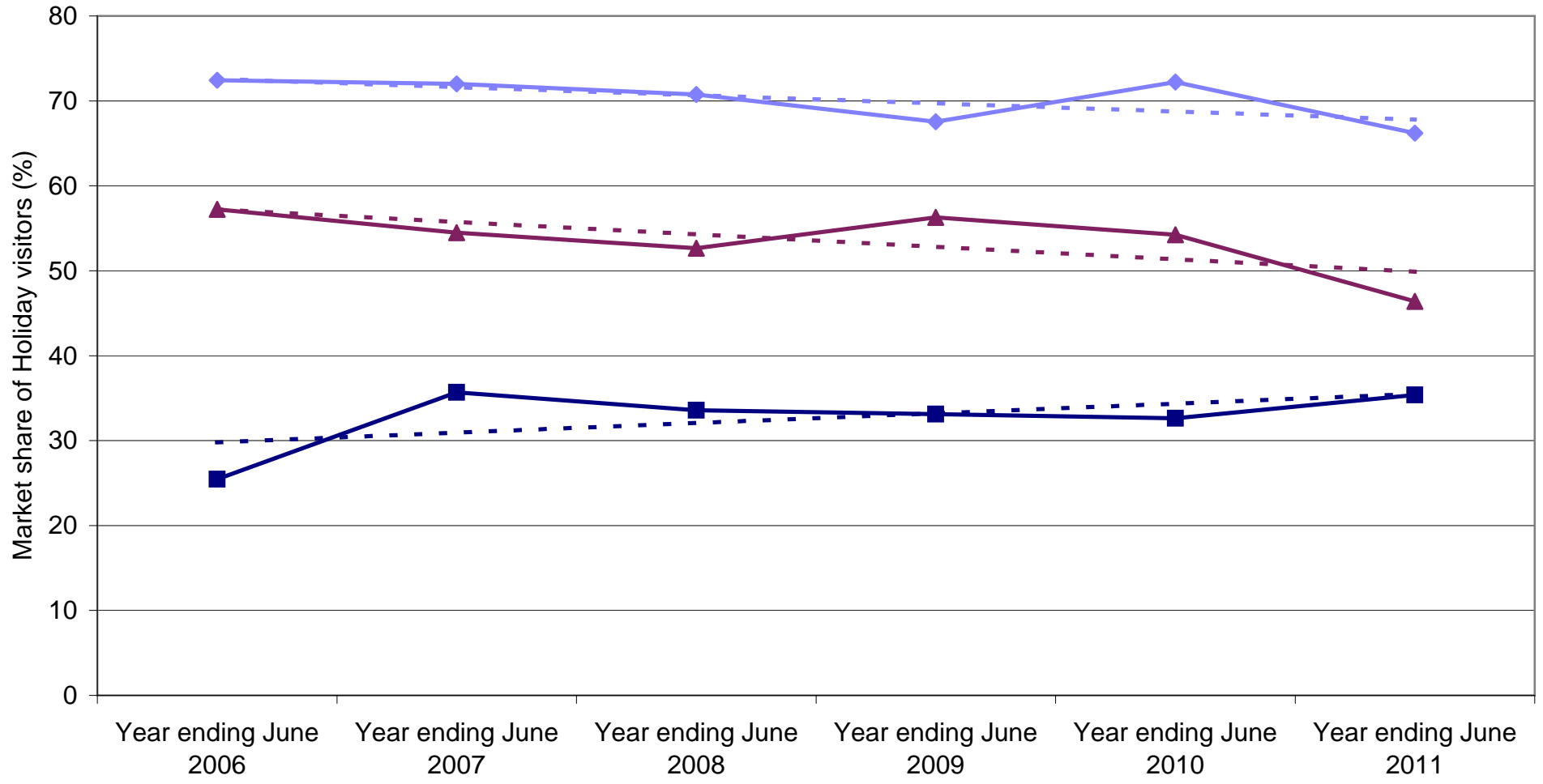
Legend: New South Wales (solid blue line with diamonds), Victoria (solid dark blue line with squares), Queensland (solid maroon line with triangles), Linear (New South Wales) (dashed light blue line), Linear (Victoria) (dashed dark blue line), Linear (Queensland) (dashed maroon line).

French holiday nights by State visited



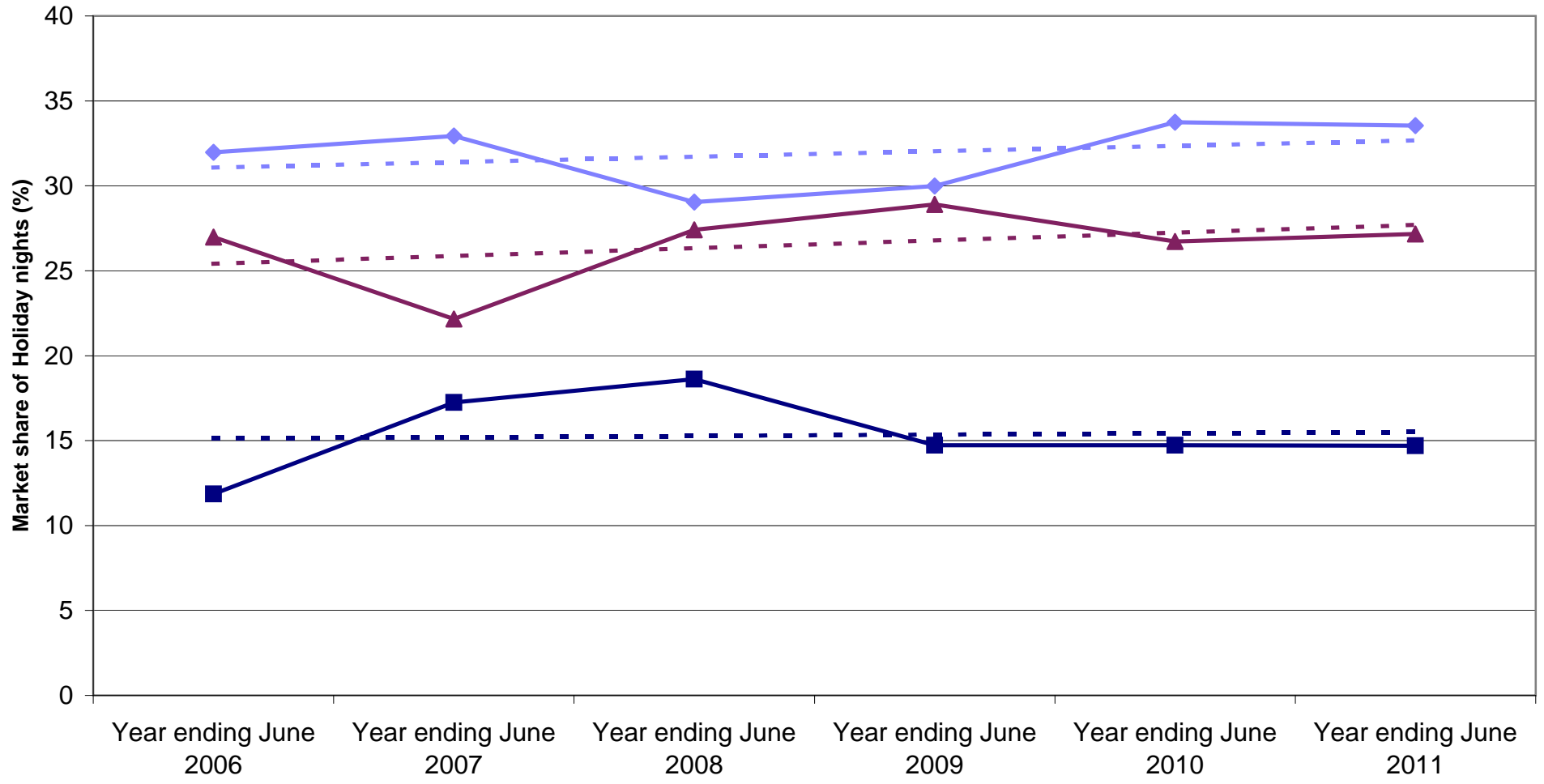
Legend:
 -◆- New South Wales
 -■- Victoria
 -▲- Queensland
 - - - Linear (New South Wales)
 - - - Linear (Victoria)
 - - - Linear (Queensland)

State market share of French holiday visitors to Australia



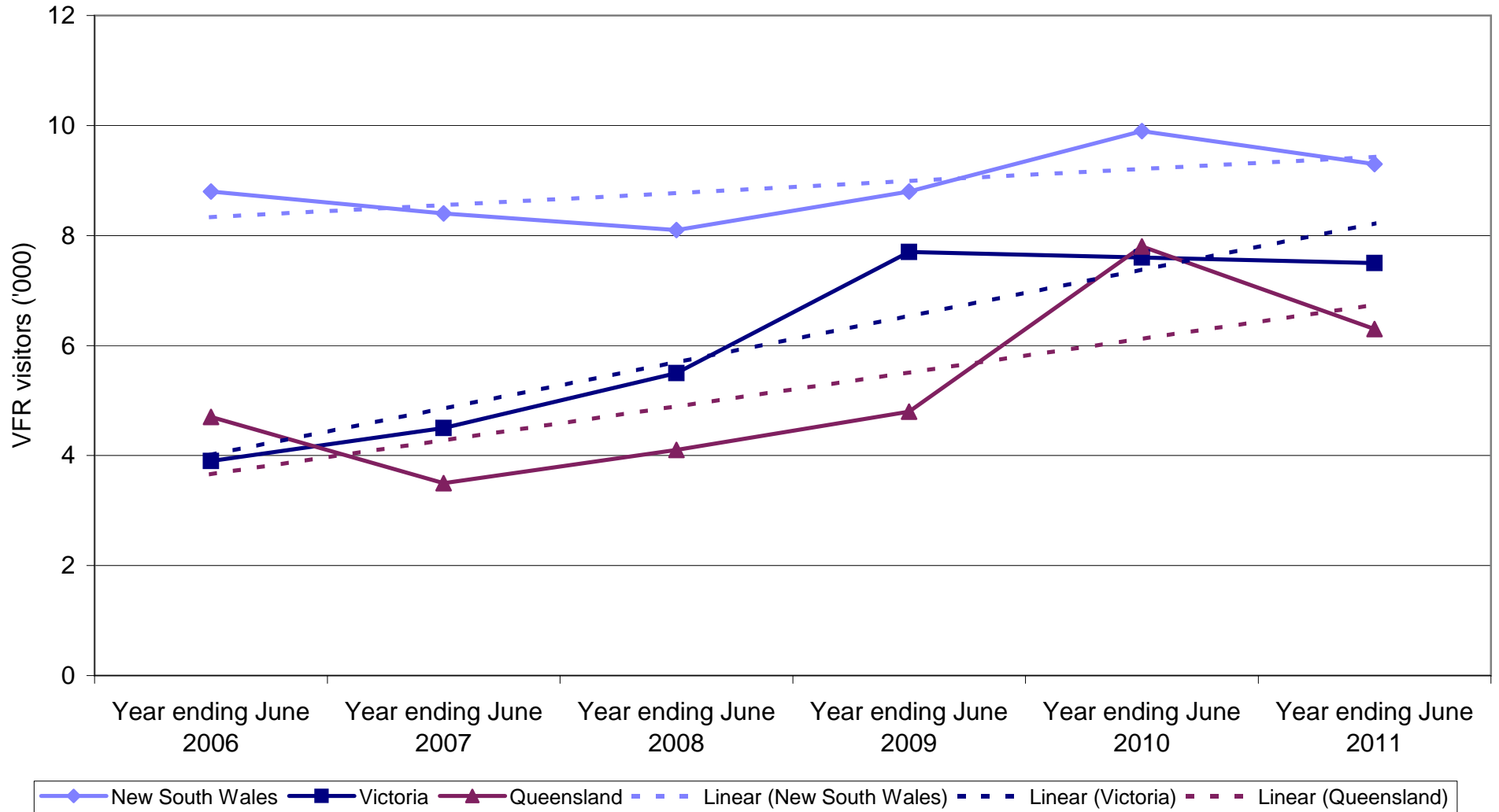
◆ New South Wales
 ■ Victoria
 ▲ Queensland
 - - - Linear (New South Wales)
 - - - Linear (Victoria)
 - - - Linear (Queensland)

State market share of French holiday nights to Australia

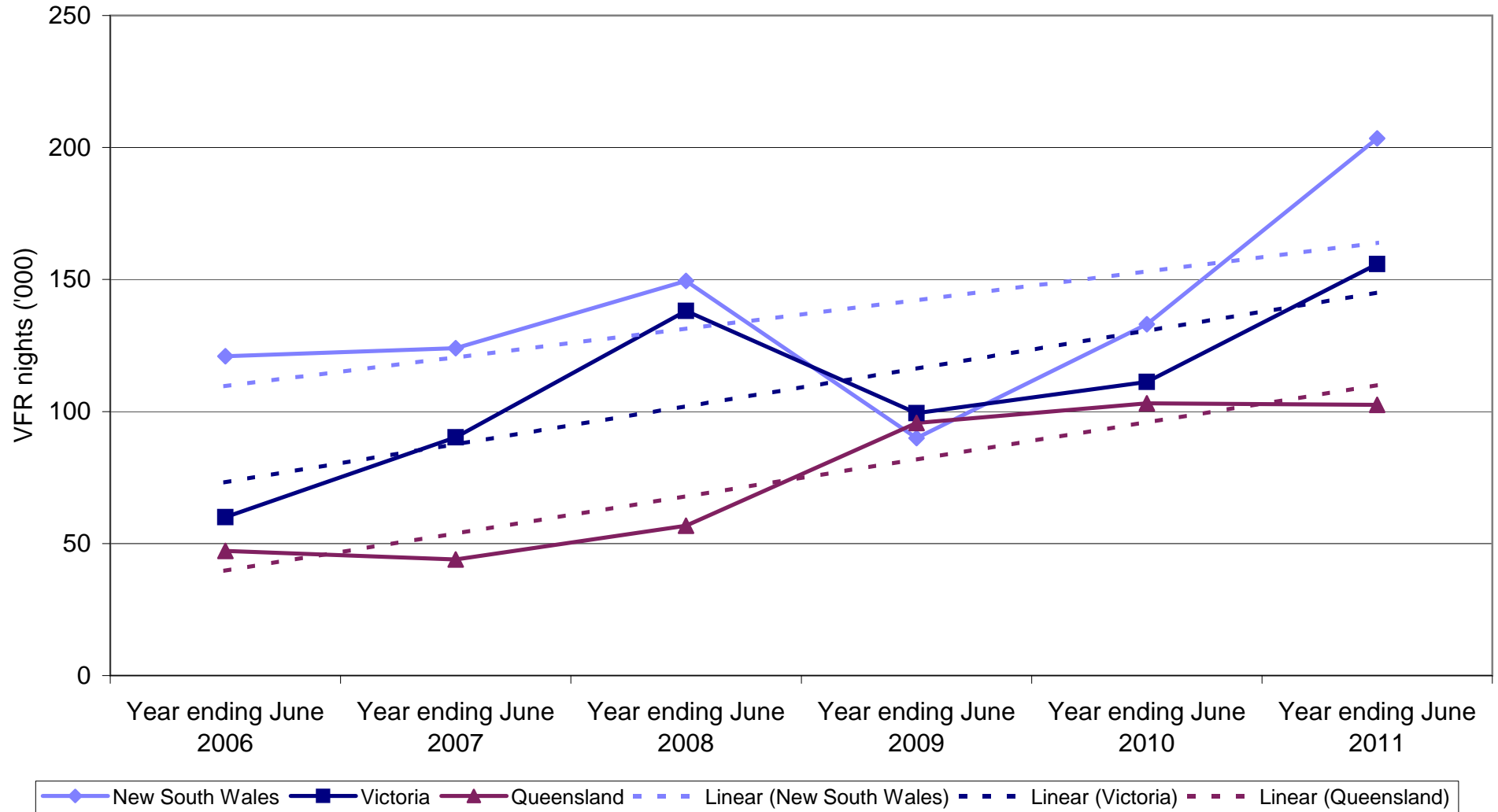


Legend: New South Wales (solid blue line with diamond markers), Victoria (solid dark blue line with square markers), Queensland (solid maroon line with triangle markers), Linear (New South Wales) (dashed blue line), Linear (Victoria) (dashed dark blue line), Linear (Queensland) (dashed maroon line).

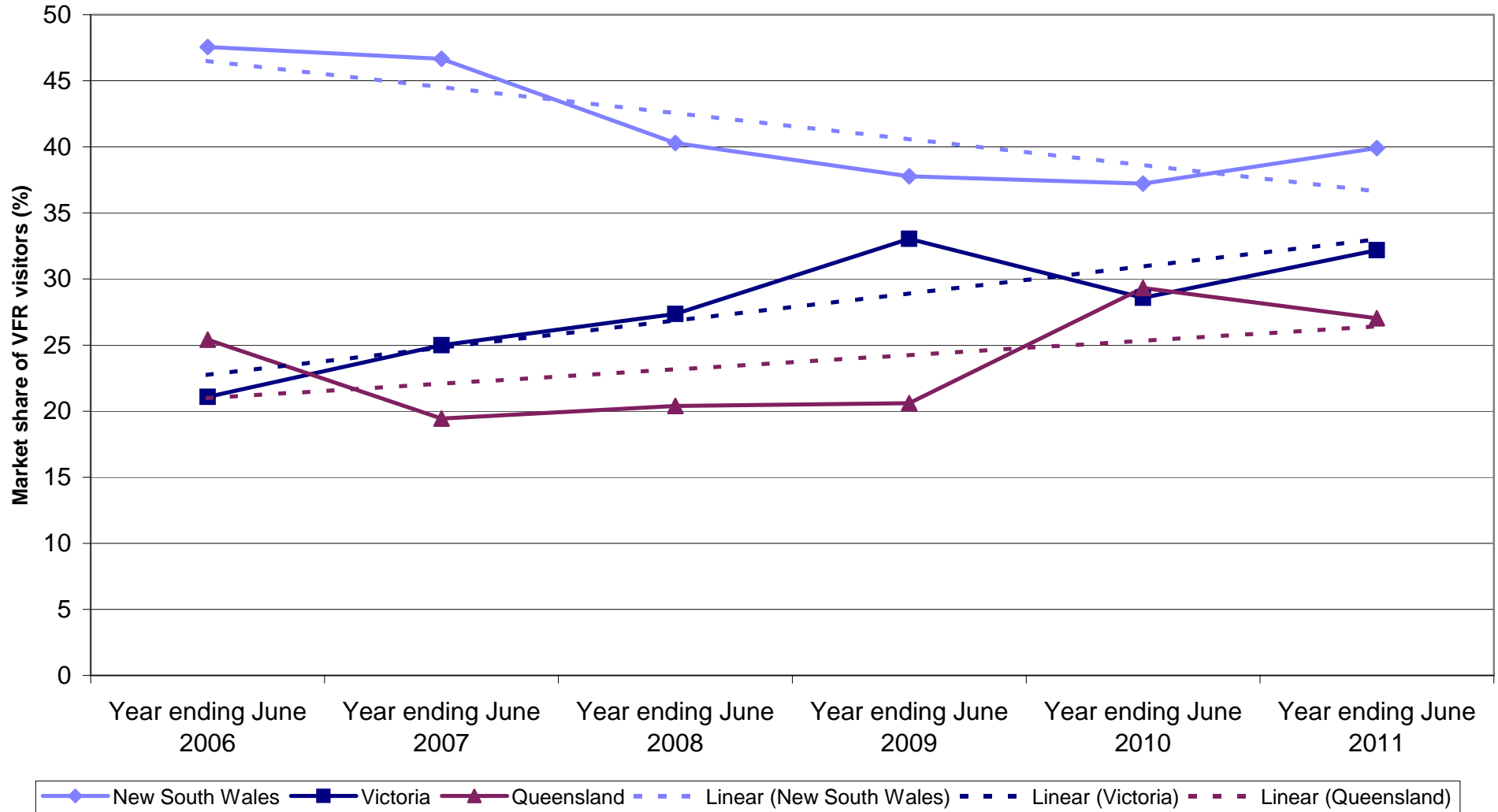
French VFR visitors by State visited



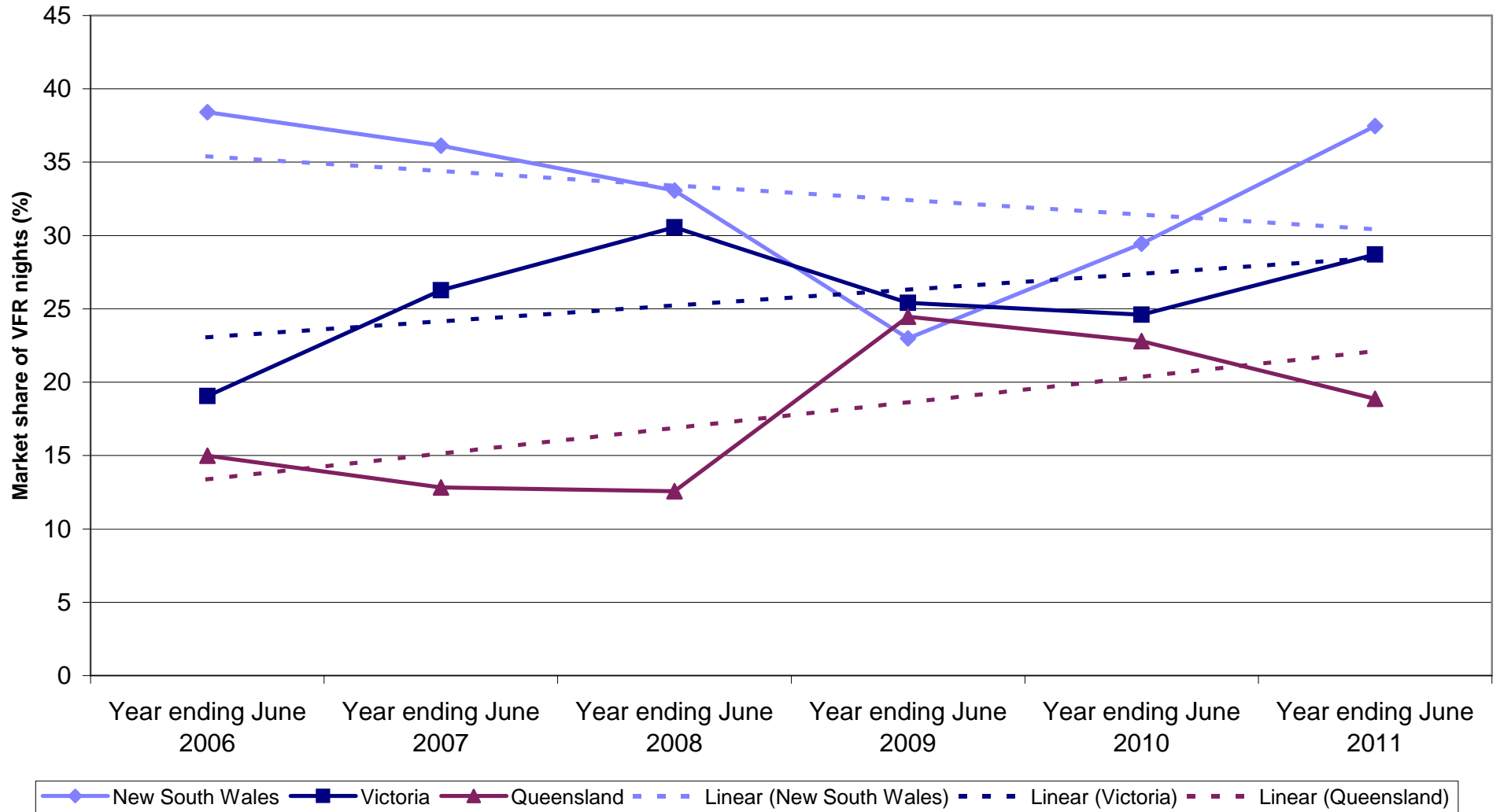
French VFR nights by State visited



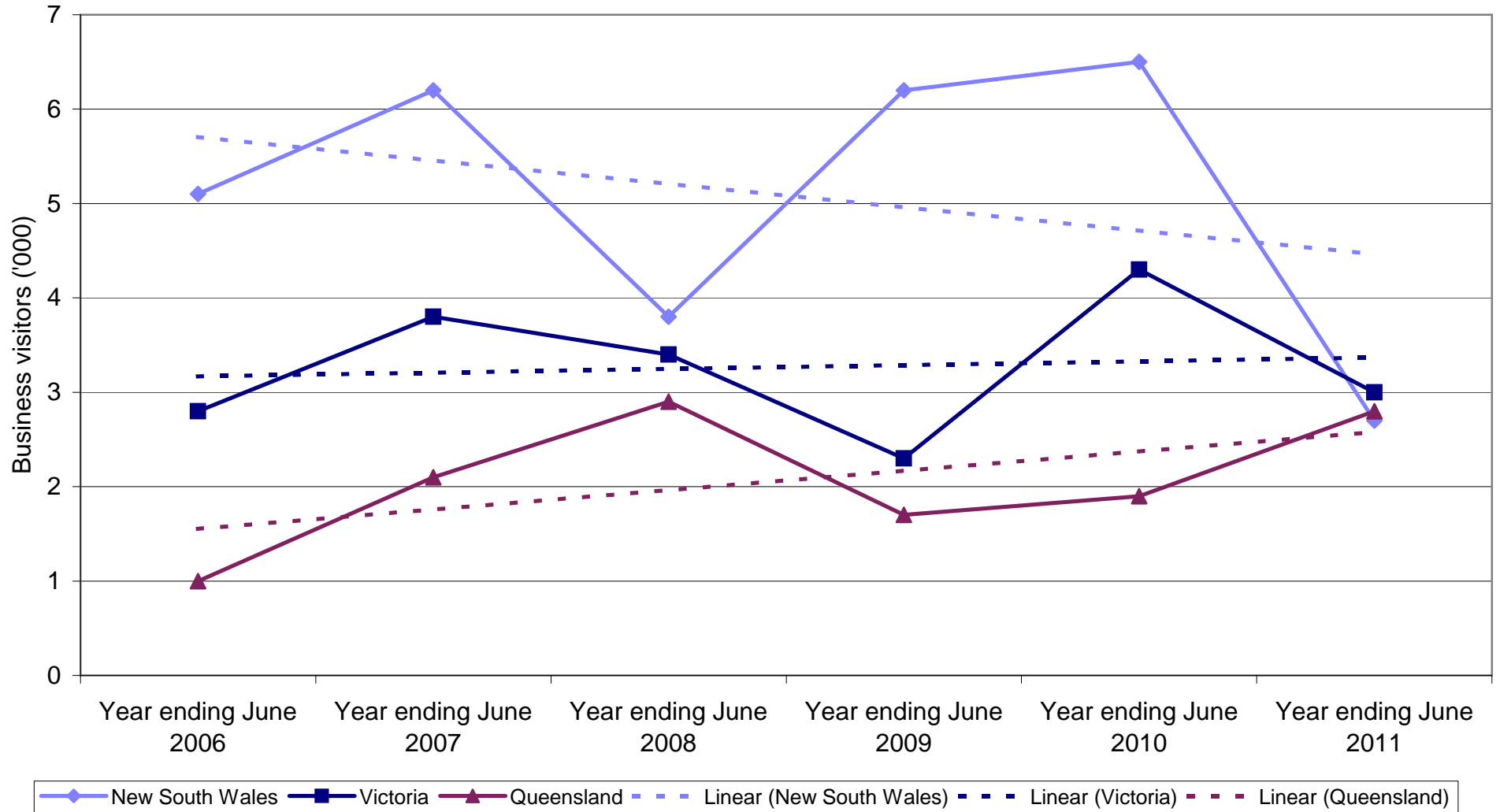
State market share of French VFR visitors to Australia



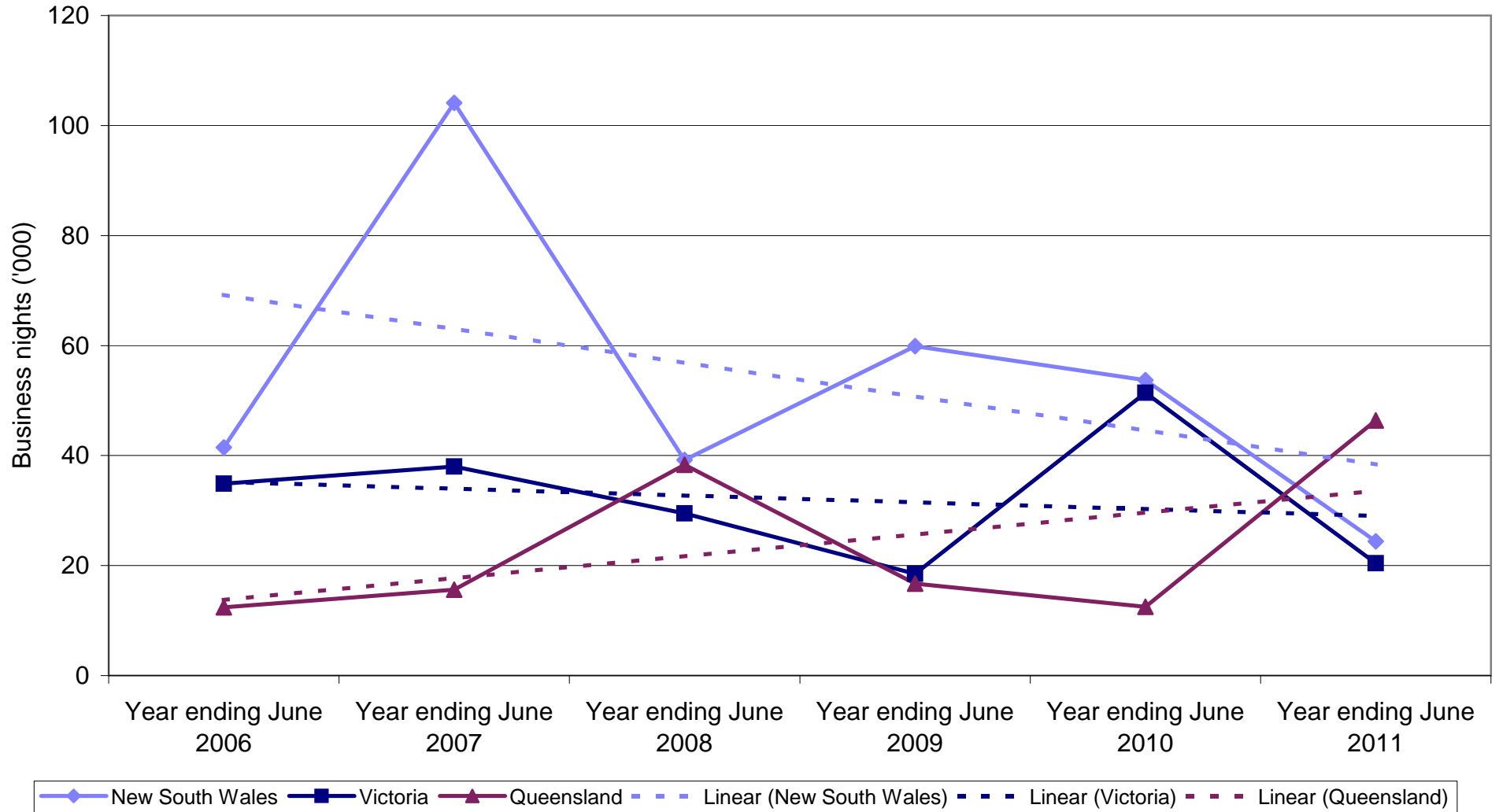
State market share of French VFR nights to Australia



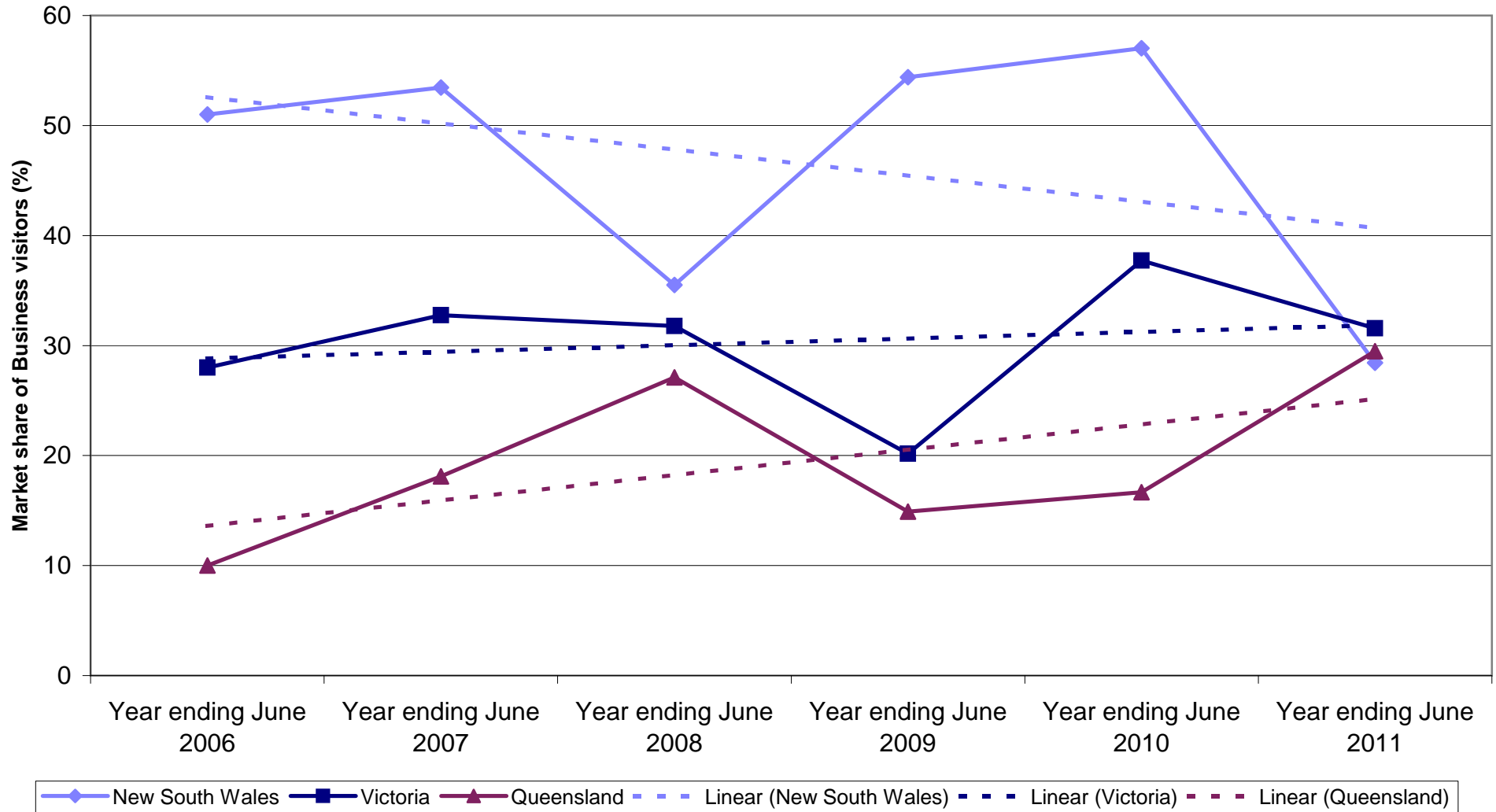
French Business visitors by State visited



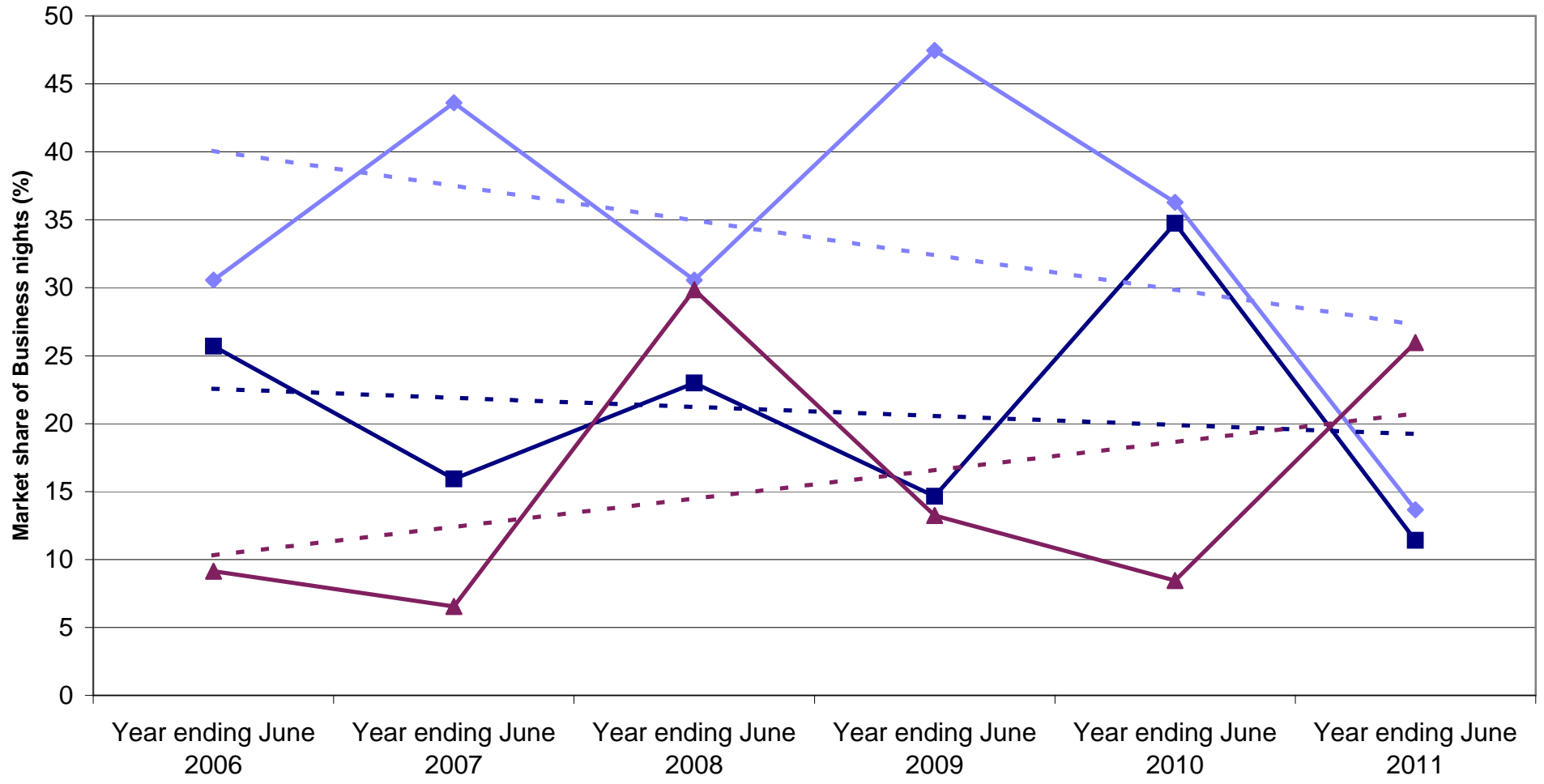
French Business nights by State visited



State market share of French Business visitors to Australia

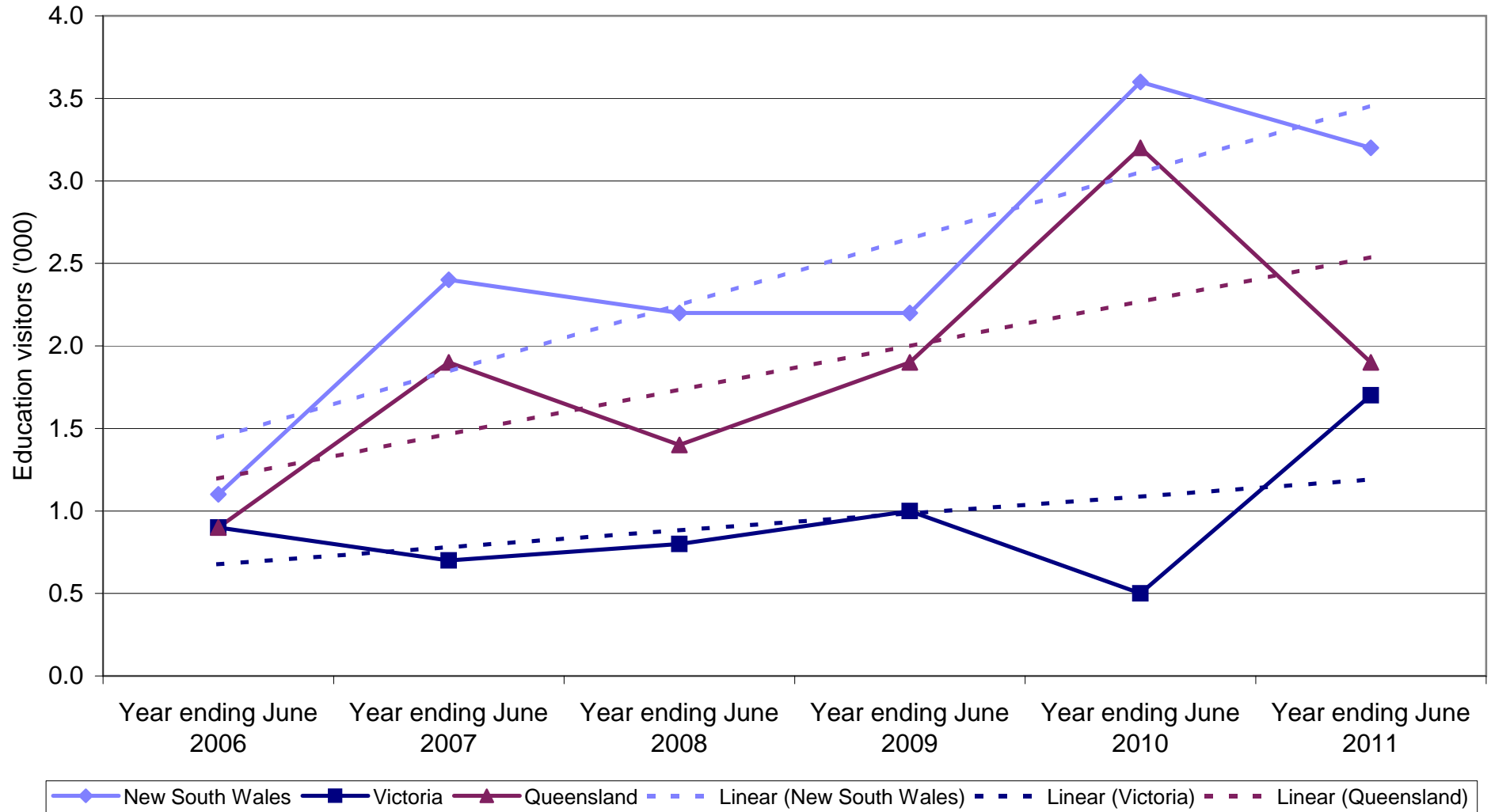


State market share of French Business nights to Australia

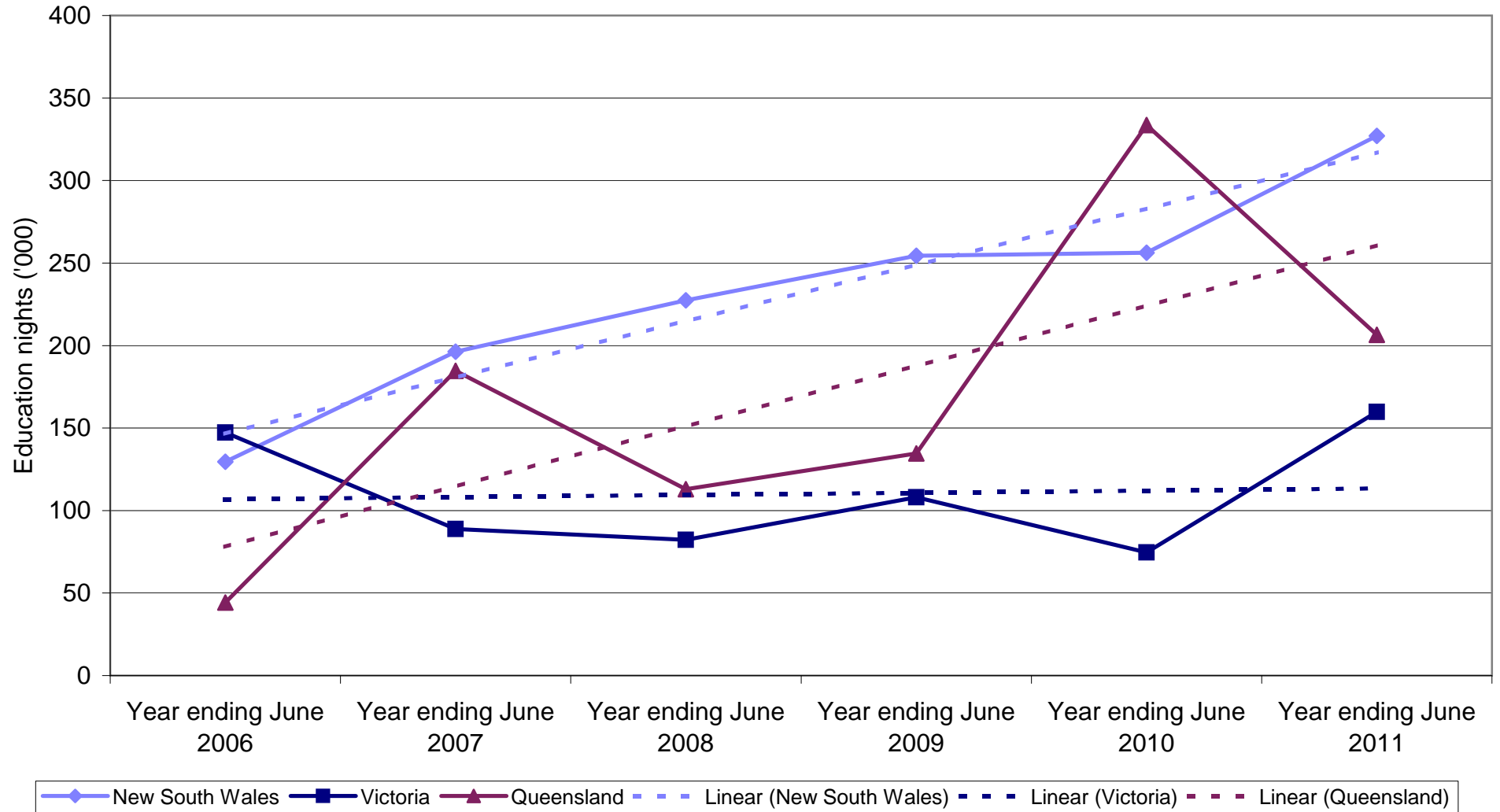


◆ New South Wales
 ■ Victoria
 ▲ Queensland
 - - - Linear (New South Wales)
 - - - Linear (Victoria)
 - - - Linear (Queensland)

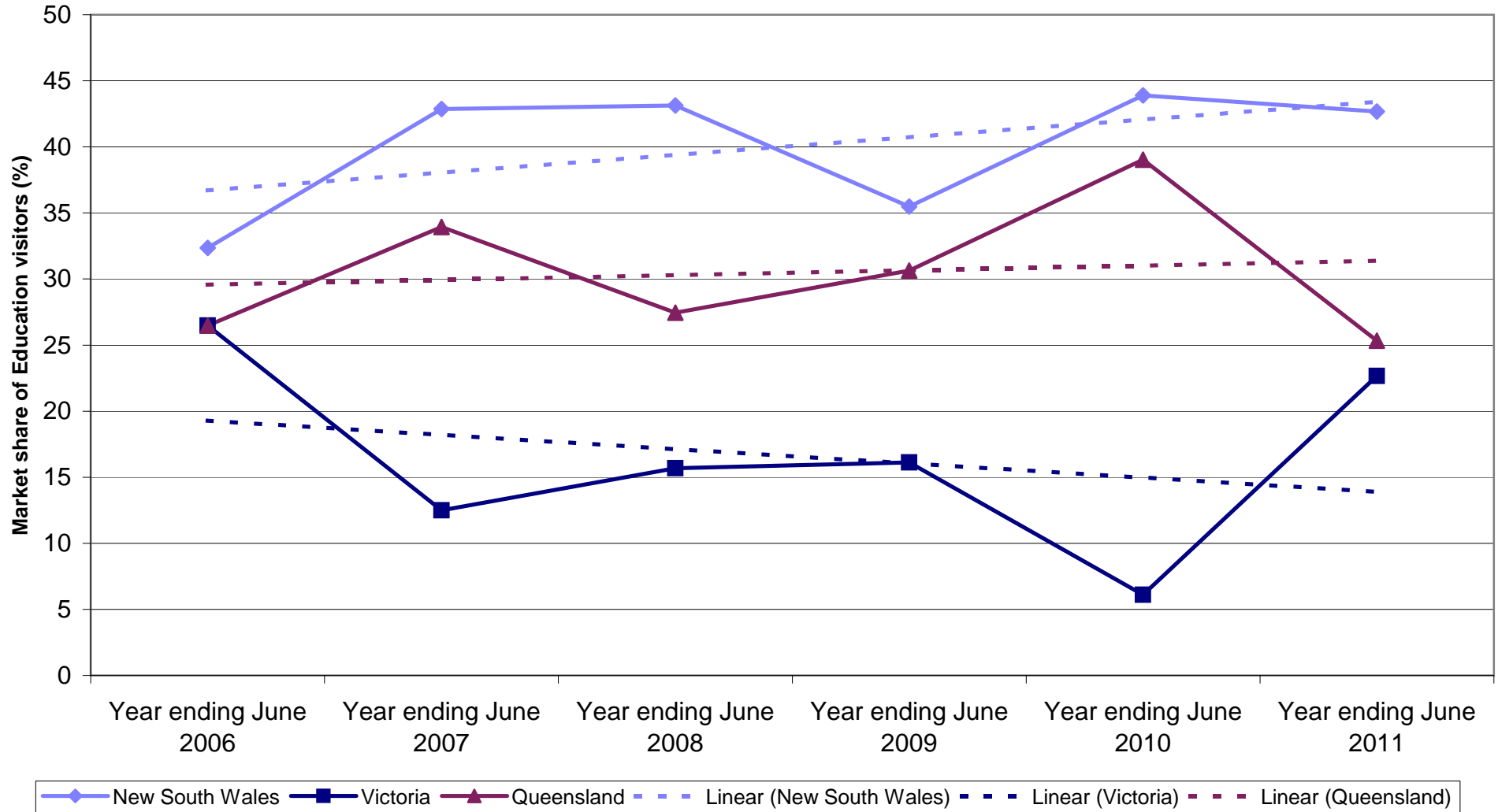
French Education visitors by State visited



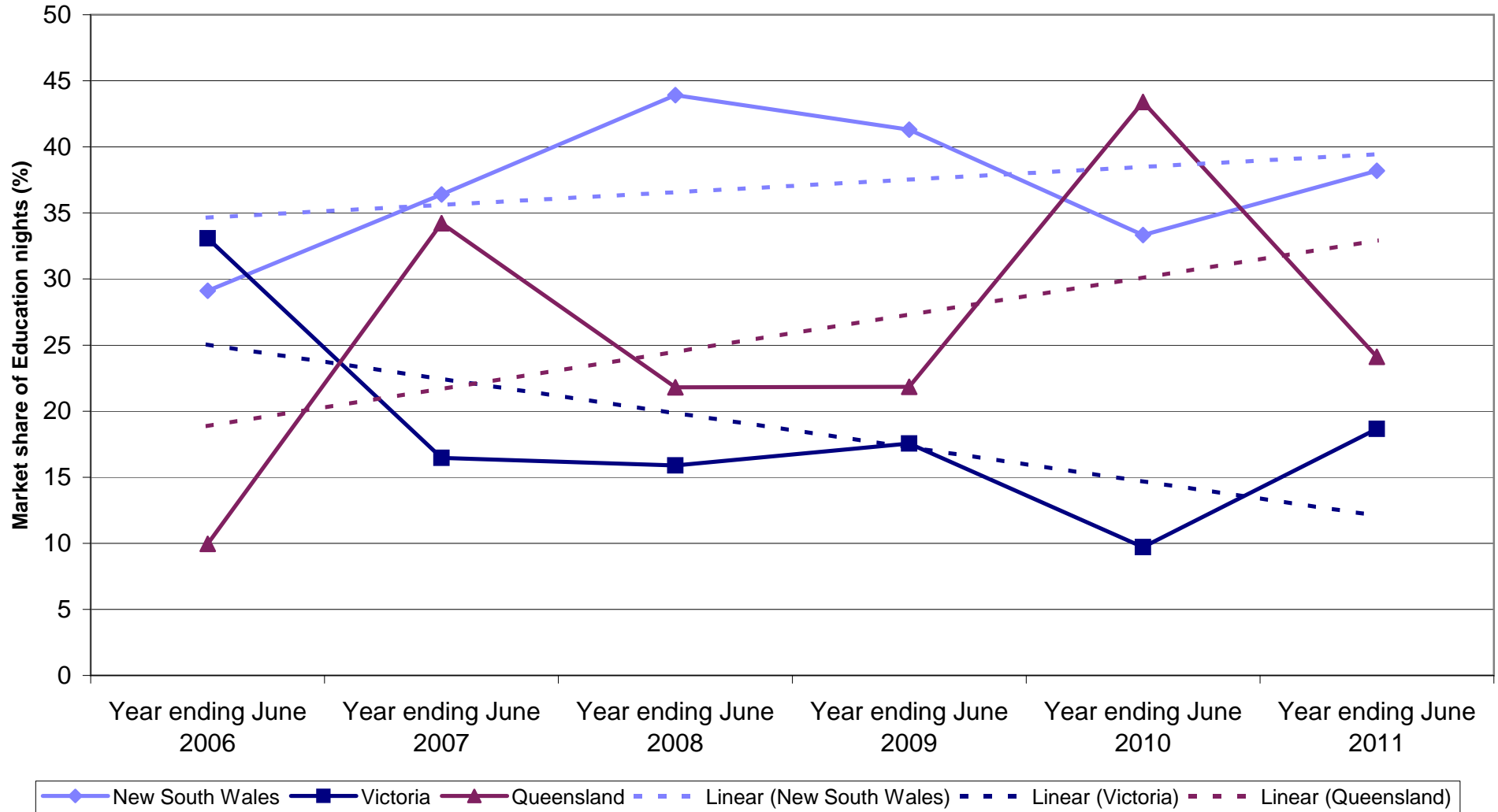
French Education nights by State visited



State market share of French Education visitors to Australia



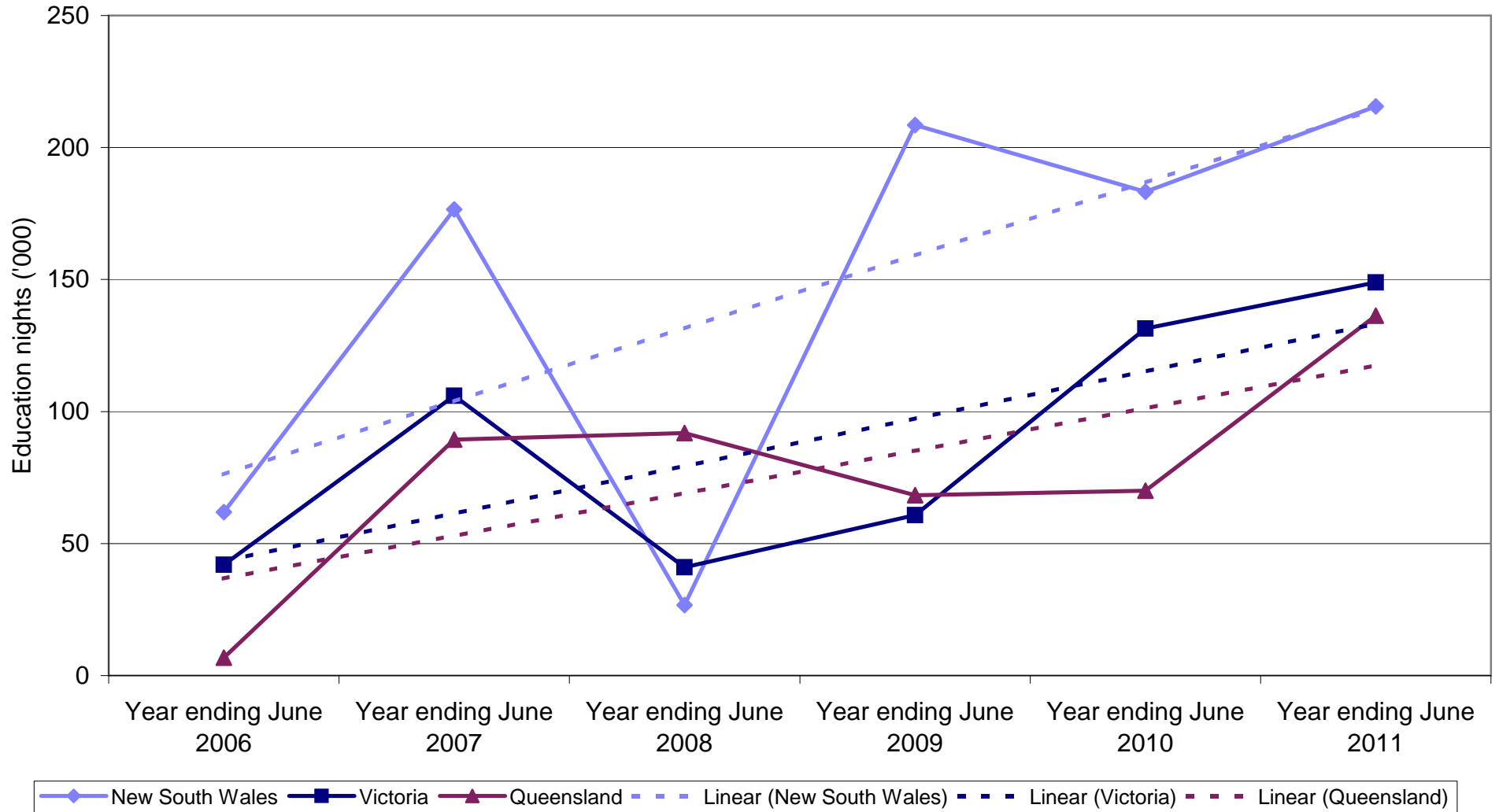
State market share of French Education nights to Australia



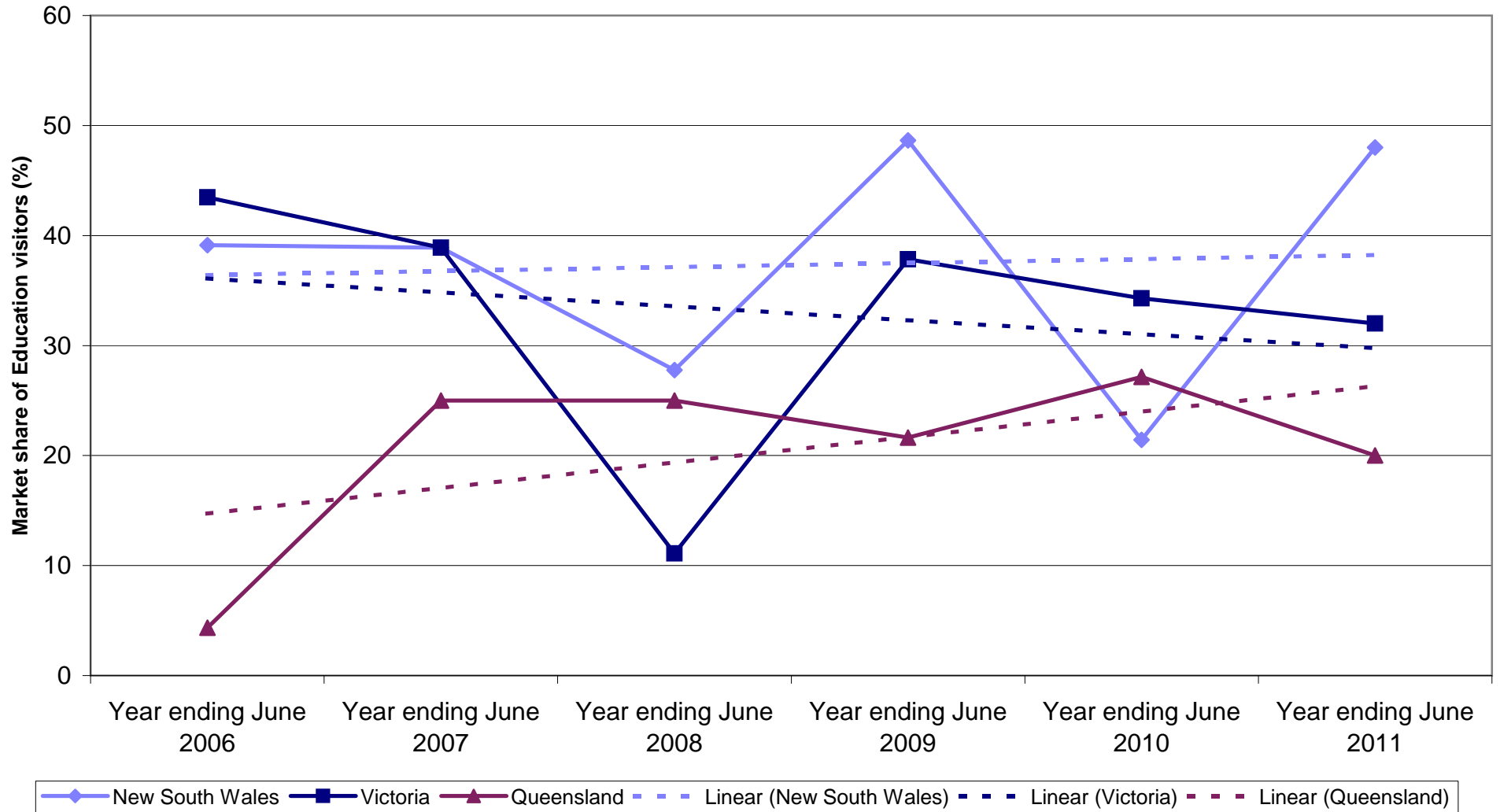
French Employment visitors by State visited



French Employment nights by State visited



State market share of French Employment visitors to Australia



State market share of French Employment nights to Australia

