

Germany - Times Series Year ending June 2006 - 2011

By stopover reason for visit

Holiday visitors ('000)	State visited	Year ending June 2006	Year ending June 2007	Year ending June 2008	Year ending June 2009	Year ending June 2010	Year ending June 2011
		New South Wales	79	80	82	79	86
	Victoria	43	41	47	46	45	43
	Queensland	67	65	65	69	67	65
	Total	112	110	114	114	119	117

Market share of holiday visitors (per cent)	State visited	Year ending June 2006	Year ending June 2007	Year ending June 2008	Year ending June 2009	Year ending June 2010	Year ending June 2011
		New South Wales	70.2	72.8	72.3	69.3	72.2
	Victoria	38.5	36.9	41.5	40.0	37.7	36.8
	Queensland	59.5	58.9	57.5	60.3	56.1	55.6

Holiday visitor nights ('000)	State visited	Year ending June 2006	Year ending June 2007	Year ending June 2008	Year ending June 2009	Year ending June 2010	Year ending June 2011
		New South Wales	1,046	1,239	1,167	1,156	1,376
	Victoria	442	445	512	508	468	490
	Queensland	1,107	1,215	1,335	1,465	1,430	1,392
	Total	3,690	4,090	4,234	4,416	4,434	4,118

Market share of holiday visitor nights (per cent)	State visited	Year ending June 2006	Year ending June 2007	Year ending June 2008	Year ending June 2009	Year ending June 2010	Year ending June 2011
		New South Wales	28.4	30.3	27.6	26.2	31.0
	Victoria	12.0	10.9	12.1	11.5	10.6	11.9
	Queensland	30.0	29.7	31.5	33.2	32.3	33.8

VFR visitors ('000)	State visited	Year ending June 2006	Year ending June 2007	Year ending June 2008	Year ending June 2009	Year ending June 2010	Year ending June 2011
		New South Wales	13	12	14	17	18
	Victoria	12	10	11	13	9	12
	Queensland	12	11	11	11	14	11
	Total	41	37	43	46	46	42

Market share of VFR visitors (per cent)	State visited	Year ending June 2006	Year ending June 2007	Year ending June 2008	Year ending June 2009	Year ending June 2010	Year ending June 2011
		New South Wales	32.6	33.2	32.4	37.1	38.6
	Victoria	28.2	27.1	25.5	27.4	19.0	28.6
	Queensland	30.1	29.2	26.2	24.6	31.4	25.8

VFR visitor nights ('000)	State visited	Year ending June 2006	Year ending June 2007	Year ending June 2008	Year ending June 2009	Year ending June 2010	Year ending June 2011
		New South Wales	205	173	287	218	182
	Victoria	270	124	104	209	147	179
	Queensland	317	152	148	199	210	181
	Total	956	577	822	802	779	753

Market share of VFR visitor nights (per cent)	State visited	Year ending June 2006	Year ending June 2007	Year ending June 2008	Year ending June 2009	Year ending June 2010	Year ending June 2011
		New South Wales	21.4	30.0	35.0	27.1	23.4
	Victoria	28.3	21.5	12.6	26.0	18.8	23.8
	Queensland	33.1	26.4	18.0	24.8	27.0	24.0

Source: International Visitor Survey.

Base: All visitors aged 15 years and over travel grid completed.

Germany - Times Series Year ending June 2006 - 2011

Business visitors ('000)	State visited	Year ending June 2006	Year ending June 2007	Year ending June 2008	Year ending June 2009	Year ending June 2010	Year ending June 2011
		New South Wales	7	7	11	9	7
	Victoria	7	7	7	7	7	4
	Queensland	3	5	3	5	4	6
	Total	19	18	21	19	18	19

Market share of business visitors (per cent)	State visited	Year ending June 2006	Year ending June 2007	Year ending June 2008	Year ending June 2009	Year ending June 2010	Year ending June 2011
		New South Wales	35.8	37.7	53.2	46.2	40.6
	Victoria	34.2	37.2	33.7	34.9	36.7	23.3
	Queensland	16.3	27.9	13.7	24.2	22.8	29.6

Business visitor nights ('000)	State visited	Year ending June 2006	Year ending June 2007	Year ending June 2008	Year ending June 2009	Year ending June 2010	Year ending June 2011
		New South Wales	41	102	94	88	100
	Victoria	102	79	57	66	84	35
	Queensland	43	47	25	43	20	45
	Total	324	345	210	227	275	234

Market share of business visitor nights (per cent)	State visited	Year ending June 2006	Year ending June 2007	Year ending June 2008	Year ending June 2009	Year ending June 2010	Year ending June 2011
		New South Wales	12.5	29.5	44.7	38.9	36.4
	Victoria	31.6	23.0	27.0	29.2	30.6	15.0
	Queensland	13.2	13.6	11.7	19.1	7.2	19.0

Education visitors ('000)	State visited	Year ending June 2006	Year ending June 2007	Year ending June 2008	Year ending June 2009	Year ending June 2010	Year ending June 2011
		New South Wales	3.5	4.4	4.9	4.1	4.5
	Victoria	1.8	1.9	1.6	2.1	1.6	1.0
	Queensland	3.1	3.2	3.1	4.4	4.4	4.6
	Total	9.4	10.7	11.7	12.2	11.6	9.6

Market share of Education visitors (per cent)	State visited	Year ending June 2006	Year ending June 2007	Year ending June 2008	Year ending June 2009	Year ending June 2010	Year ending June 2011
		New South Wales	37.2	41.1	41.9	33.6	38.8
	Victoria	19.1	17.8	13.7	17.2	13.8	10.4
	Queensland	33.0	29.9	26.5	36.1	37.9	47.9

Education visitor nights ('000)	State visited	Year ending June 2006	Year ending June 2007	Year ending June 2008	Year ending June 2009	Year ending June 2010	Year ending June 2011
		New South Wales	272	352	359	312	341
	Victoria	161	258	205	289	160	124
	Queensland	178	321	287	378	346	341
	Total	736	1,088	1,112	1,289	990	912

Market share of Education visitor nights (per cent)	State visited	Year ending June 2006	Year ending June 2007	Year ending June 2008	Year ending June 2009	Year ending June 2010	Year ending June 2011
		New South Wales	36.9	32.4	32.2	24.2	34.5
	Victoria	21.9	23.7	18.4	22.4	16.1	13.6
	Queensland	24.1	29.5	25.8	29.4	34.9	37.4

Employment visitors ('000)	State visited	Year ending June 2006	Year ending June 2007	Year ending June 2008	Year ending June 2009	Year ending June 2010	Year ending June 2011
		New South Wales	1.7	1.2	1.3	3.4	1.7
	Victoria	1.1	1.5	0.4	1.7	1.0	0.9
	Queensland	2.4	1.9	0.9	2.7	1.4	2.0
	Total	5.3	5.3	3.8	6.5	4.9	6.3

Market share of Employment visitors (per cent)	State visited	Year ending June 2006	Year ending June 2007	Year ending June 2008	Year ending June 2009	Year ending June 2010	Year ending June 2011
		New South Wales	32.1	22.6	34.2	52.3	34.7
	Victoria	20.8	28.3	10.5	26.2	20.4	14.3
	Queensland	45.3	35.8	23.7	41.5	28.6	31.7

Germany - Times Series Year ending June 2006 - 2011

		Year ending June 2006	Year ending June 2007	Year ending June 2008	Year ending June 2009	Year ending June 2010	Year ending June 2011
Employment visitor nights (’000)	State visited						
	New South Wales	121	98	80	217	162	177
	Victoria	86	144	20	136	109	81
	Queensland	146	146	40	148	162	149
	Total	445	504	321	657	553	557

		Year ending June 2006	Year ending June 2007	Year ending June 2008	Year ending June 2009	Year ending June 2010	Year ending June 2011
Market share of Employment visitor nights (per cent)	State visited						
	New South Wales	27.3	19.4	25.0	33.1	29.3	31.8
	Victoria	19.4	28.5	6.1	20.8	19.7	14.5
	Queensland	32.8	29.0	12.4	22.4	29.4	26.8

		Year ending June 2006	Year ending June 2007	Year ending June 2008	Year ending June 2009	Year ending June 2010	Year ending June 2011
Total visitors (’000)	State visited						
	New South Wales	97.5	99.6	106.0	104.9	107.8	101.4
	Victoria	57.3	55.3	62.9	60.3	58.0	56.6
	Queensland	75.9	74.9	73.6	79.6	81.3	77.3
	Total	145.2	143.6	149.7	153.3	157.8	154.1

		Year ending June 2006	Year ending June 2007	Year ending June 2008	Year ending June 2009	Year ending June 2010	Year ending June 2011
Market share of total visitors (per cent)	State visited						
	New South Wales	67.1	69.4	70.8	68.4	68.3	65.8
	Victoria	39.5	38.5	42.0	39.3	36.8	36.7
	Queensland	52.3	52.2	49.2	51.9	51.5	50.2

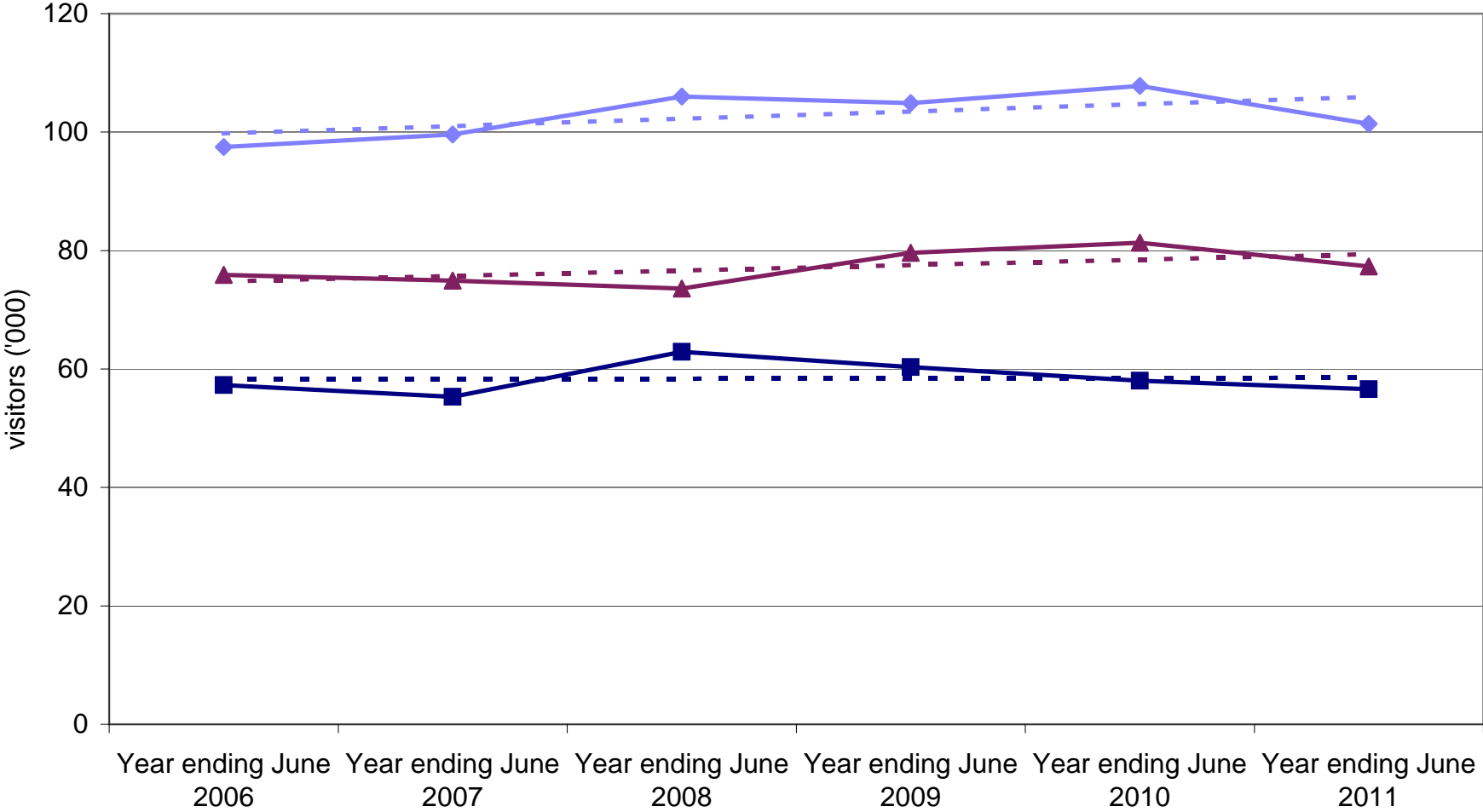
		Year ending June 2006	Year ending June 2007	Year ending June 2008	Year ending June 2009	Year ending June 2010	Year ending June 2011
Total visitor nights (’000)	State visited						
	New South Wales	1,807	1,967	1,994	2,009	2,170	1,897
	Victoria	1,168	1,052	902	1,216	969	911
	Queensland	1,793	1,886	1,839	2,237	2,174	2,114
	Total	6,490	6,672	6,770	7,482	7,115	6,657

		Year ending June 2006	Year ending June 2007	Year ending June 2008	Year ending June 2009	Year ending June 2010	Year ending June 2011
Market share of total visitor nights (per cent)	State visited						
	New South Wales	27.8	29.5	29.4	26.9	30.5	28.5
	Victoria	18.0	15.8	13.3	16.3	13.6	13.7
	Queensland	27.6	28.3	27.2	29.9	30.6	31.8

Source: International Visitor Survey.

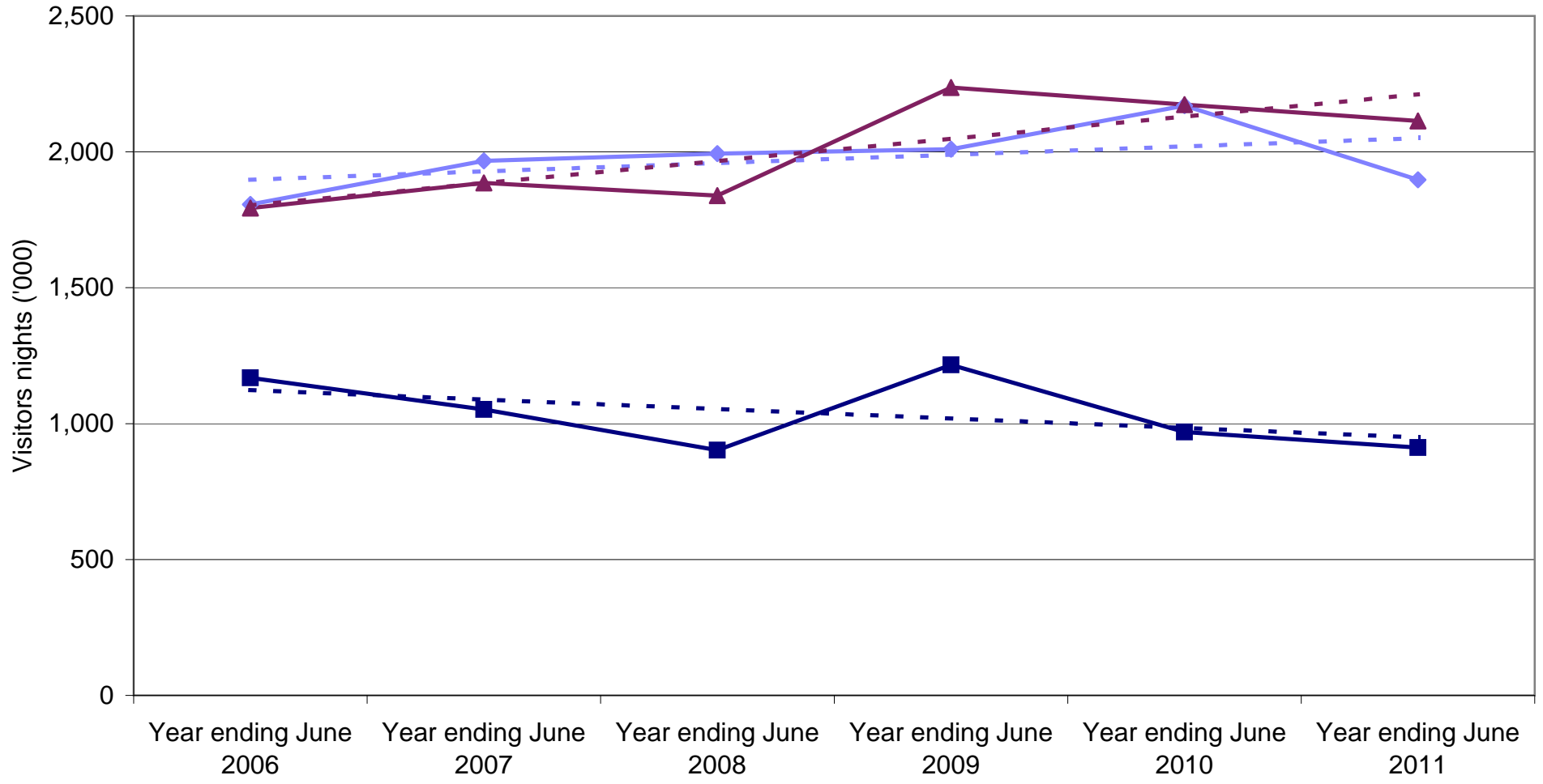
Base: All visitors aged 15 years and over travel grid completed.

German visitors by State visited



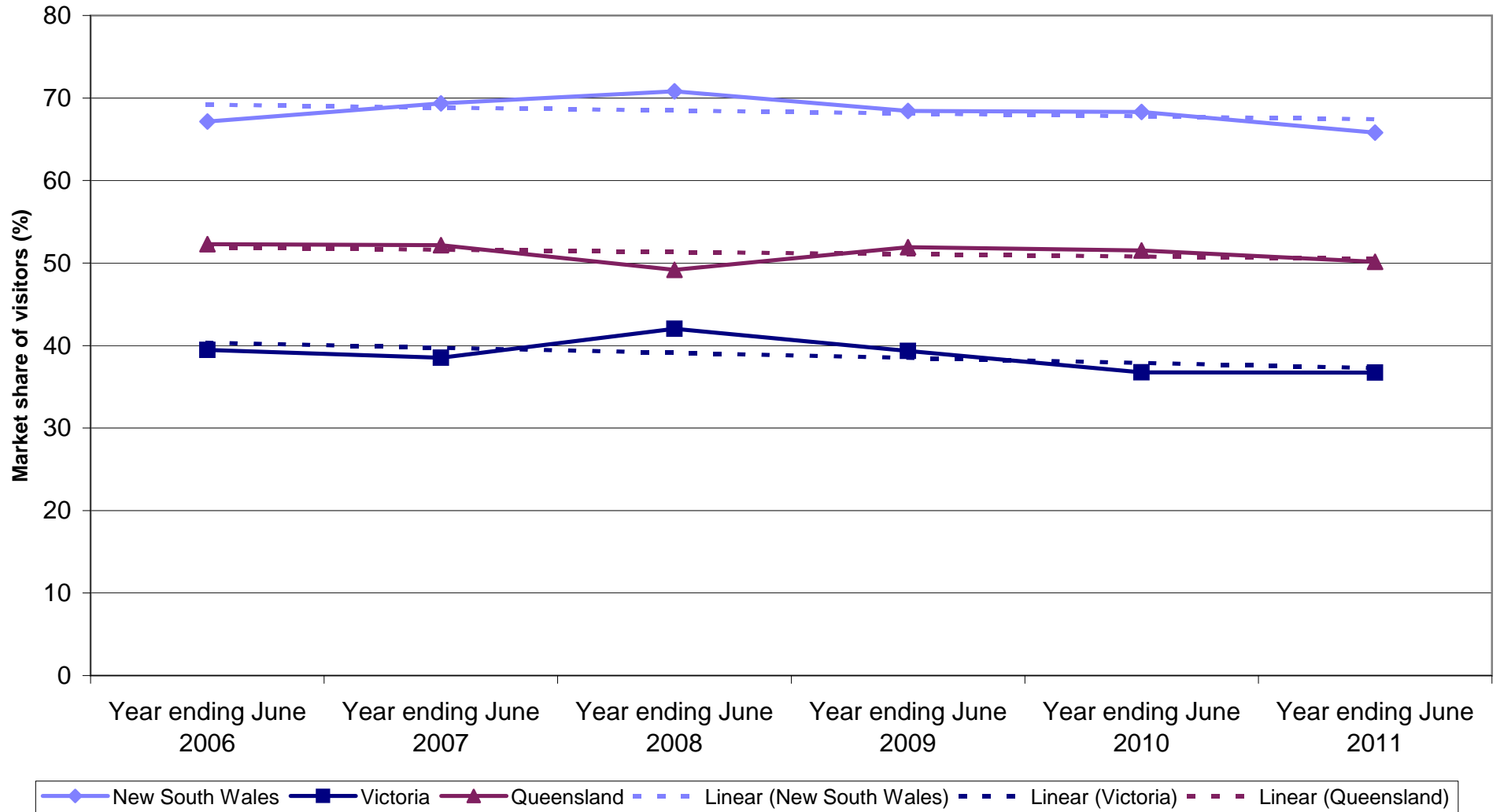
◆ New South Wales
 ■ Victoria
 ▲ Queensland
 - - - Linear (New South Wales)
 - - - Linear (Victoria)
 - - - Linear (Queensland)

German nights by State visited

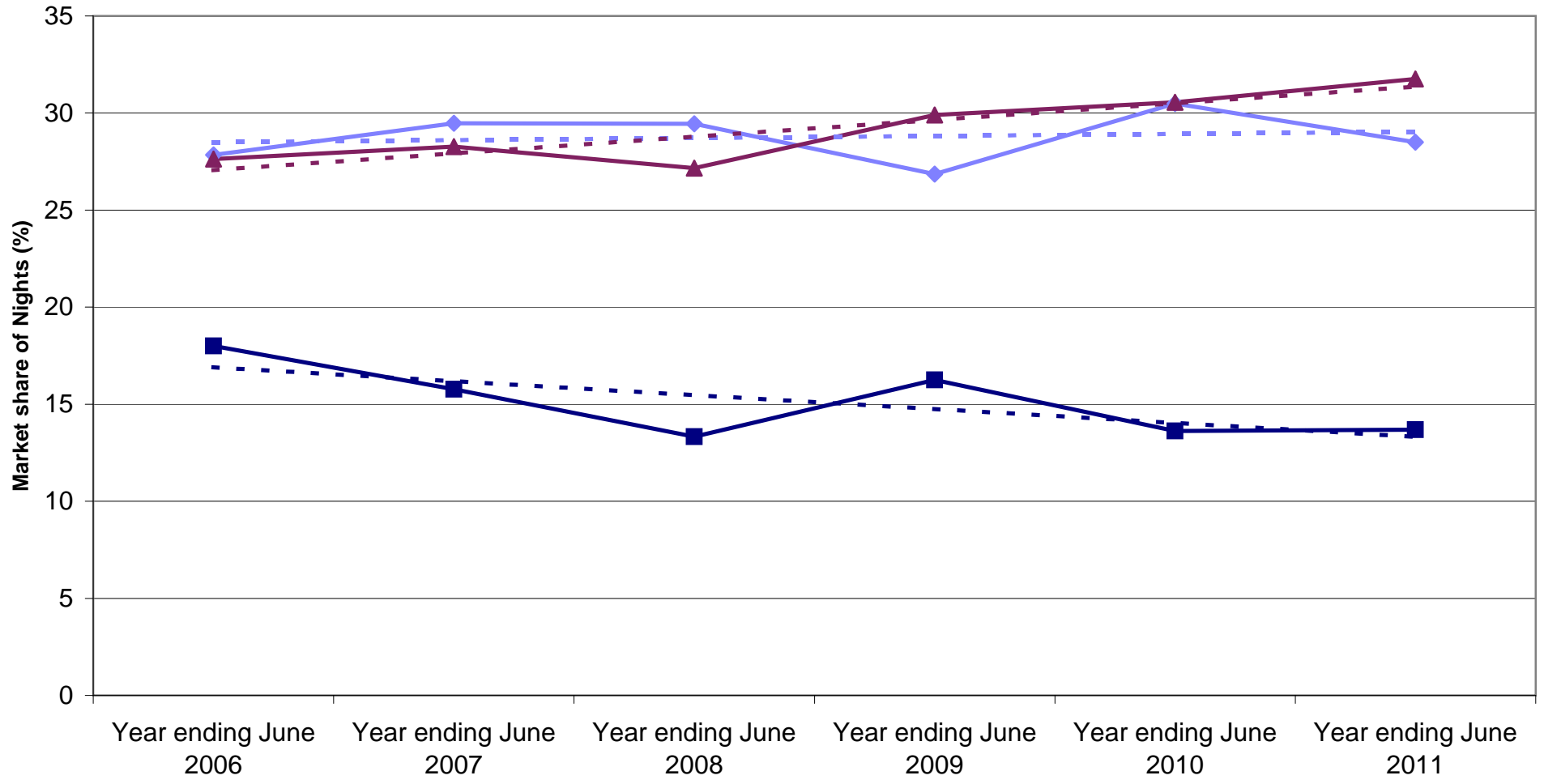


Legend: New South Wales (light blue line with diamonds), Victoria (dark blue line with squares), Queensland (maroon line with triangles), Linear (New South Wales) (dashed light blue line), Linear (Victoria) (dashed dark blue line), Linear (Queensland) (dashed maroon line)

State market share of German visitors to Australia

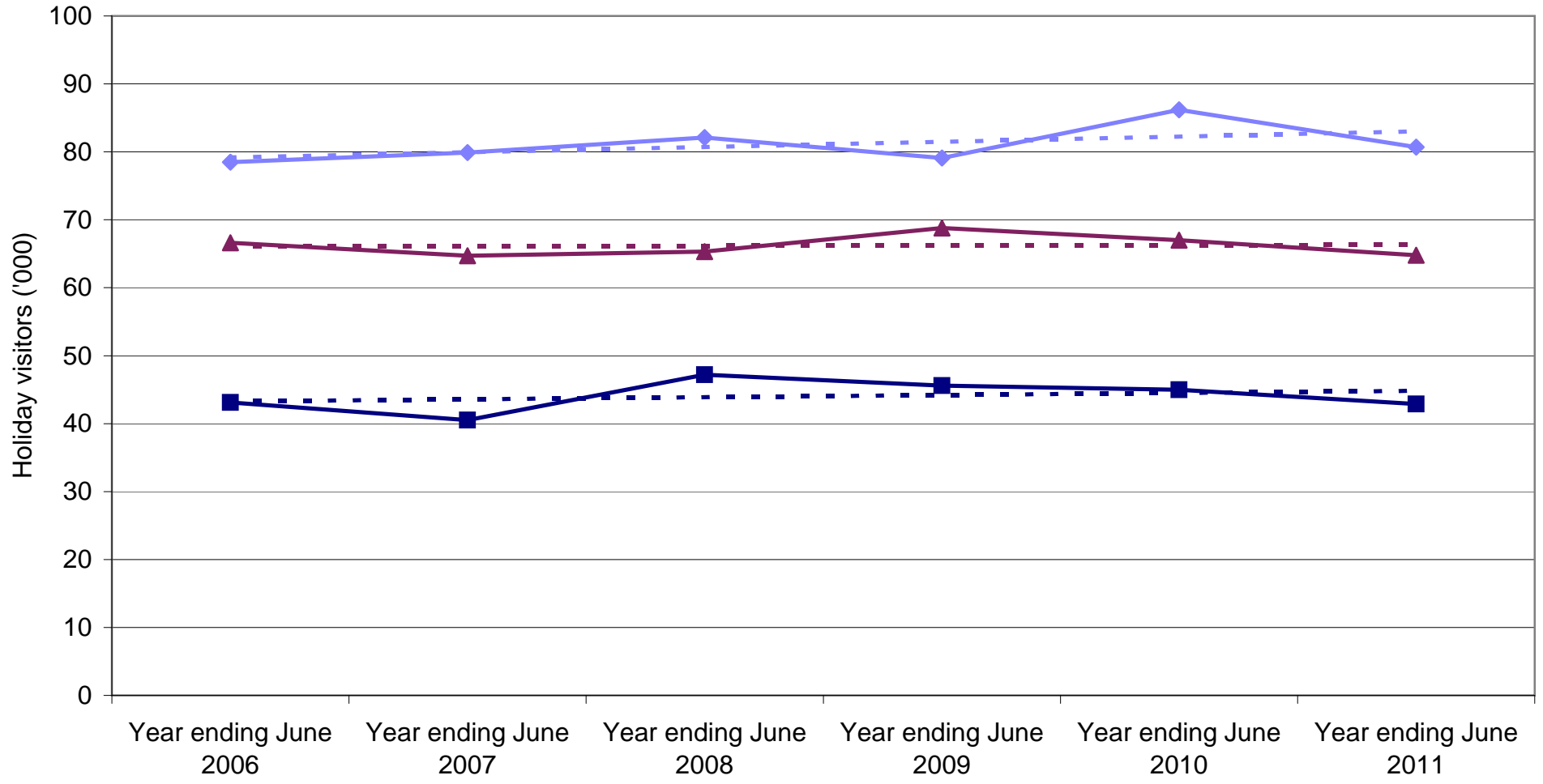


State market share of German nights to Australia



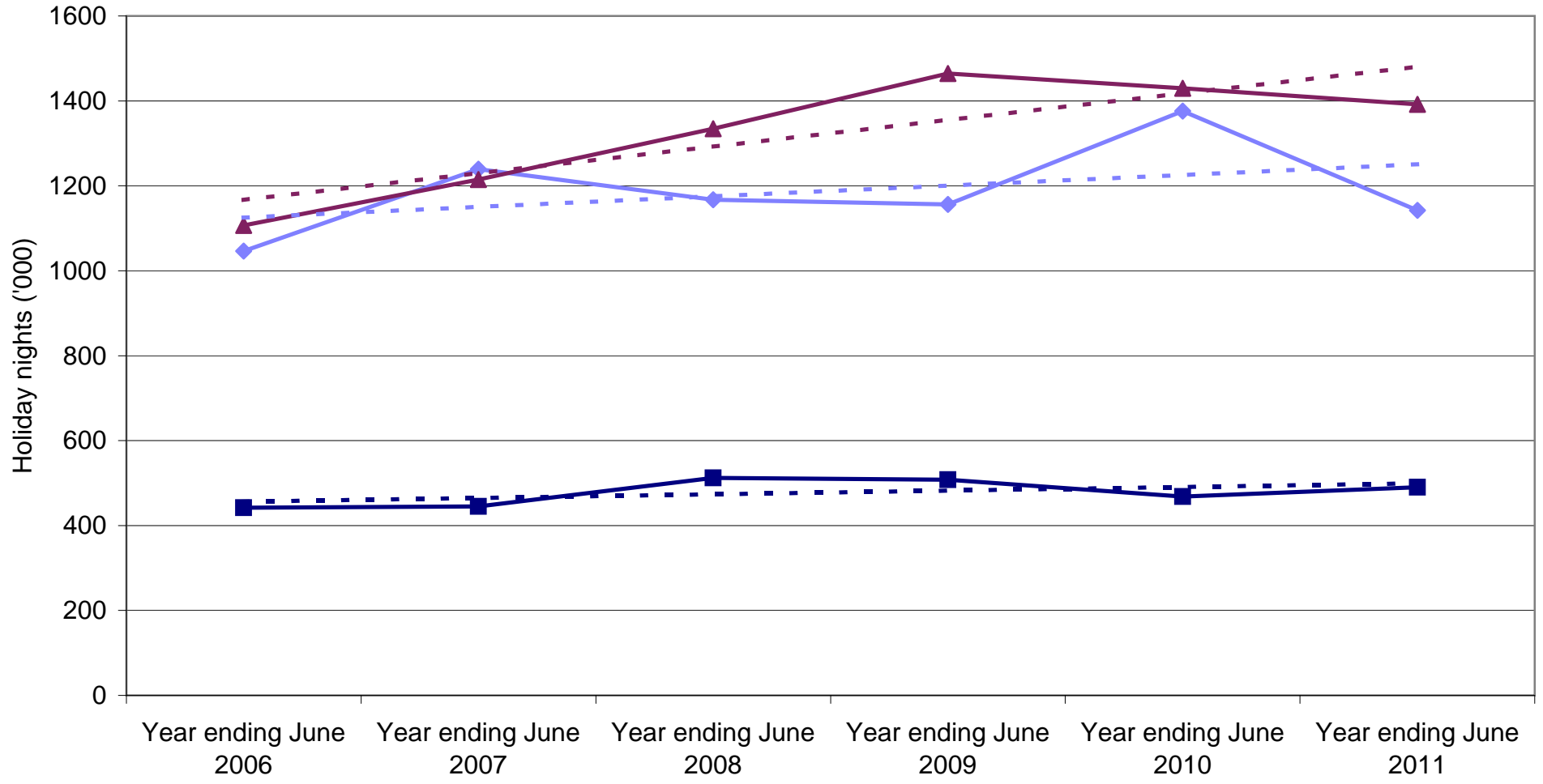
Legend: New South Wales (solid blue line with diamond markers), Victoria (solid dark blue line with square markers), Queensland (solid maroon line with triangle markers), Linear (New South Wales) (dashed blue line), Linear (Victoria) (dashed dark blue line), Linear (Queensland) (dashed maroon line).

German holiday visitors by State visited



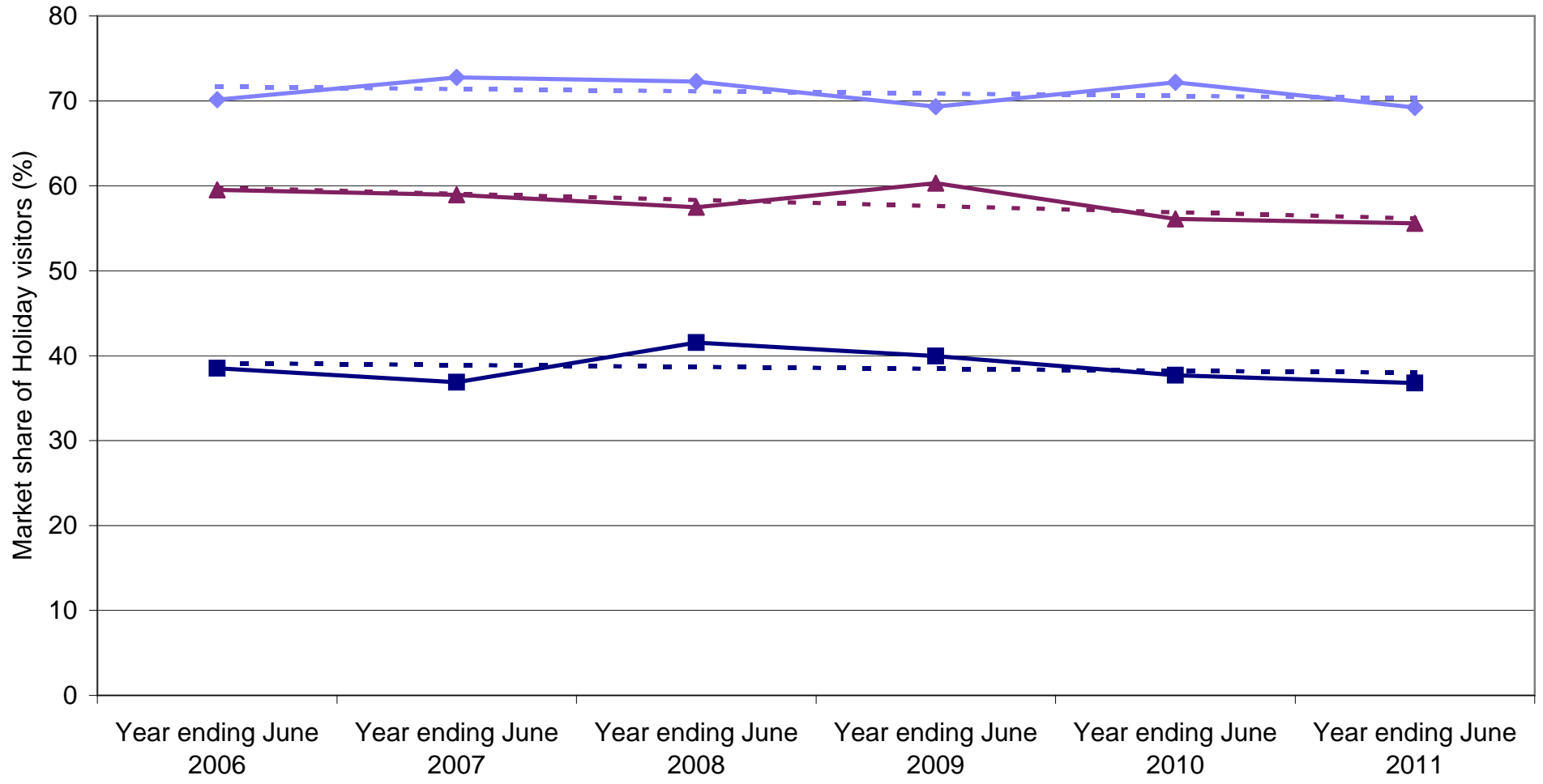
Legend: New South Wales (blue diamond), Victoria (dark blue square), Queensland (maroon triangle), Linear (New South Wales) (dashed blue), Linear (Victoria) (dashed dark blue), Linear (Queensland) (dashed maroon)

German holiday nights by State visited



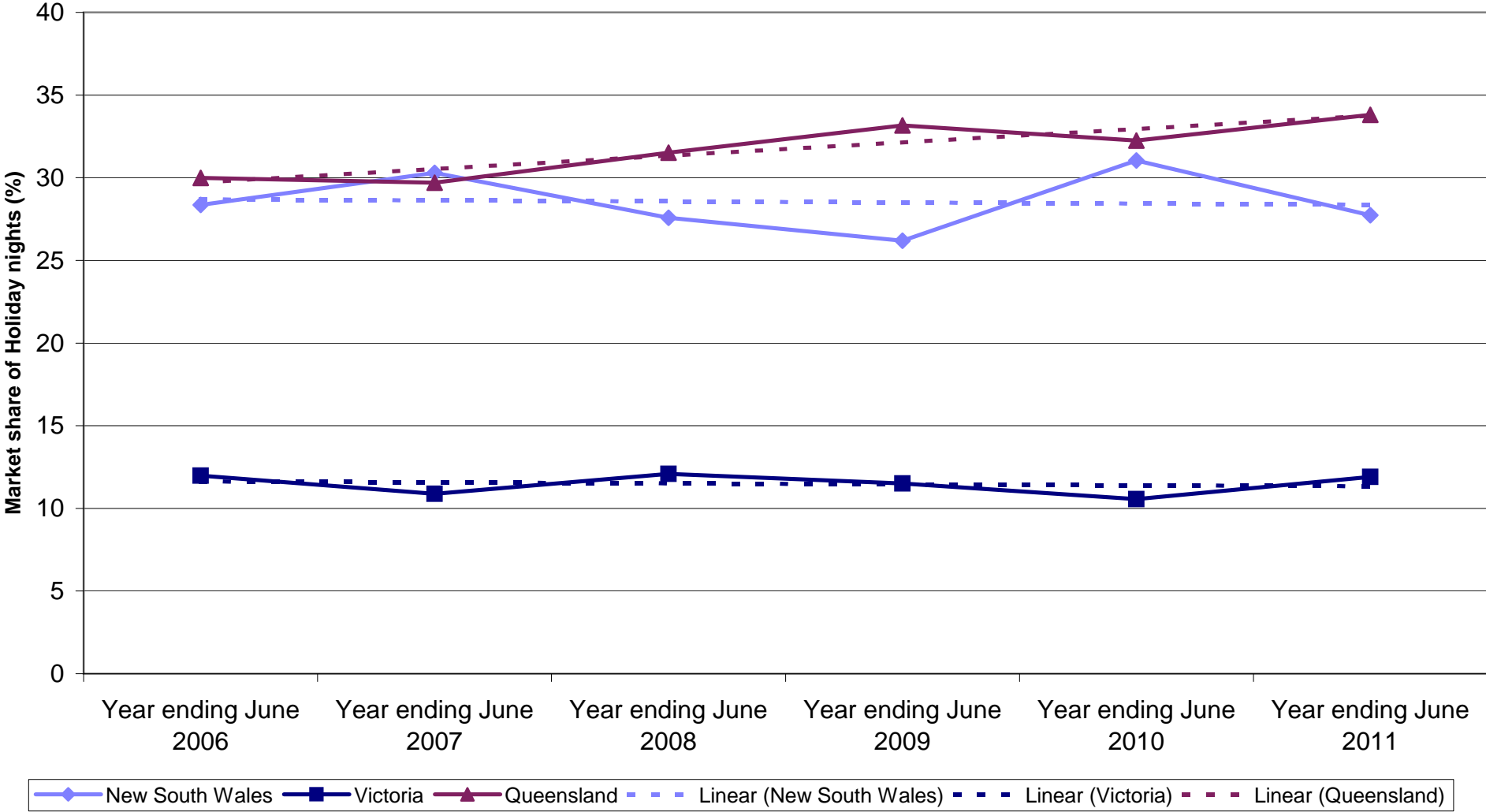
Legend: New South Wales (solid blue line with diamond markers), Victoria (solid dark blue line with square markers), Queensland (solid maroon line with triangle markers), Linear (New South Wales) (dashed light blue line), Linear (Victoria) (dashed dark blue line), Linear (Queensland) (dashed maroon line).

State market share of German holiday visitors to Australia

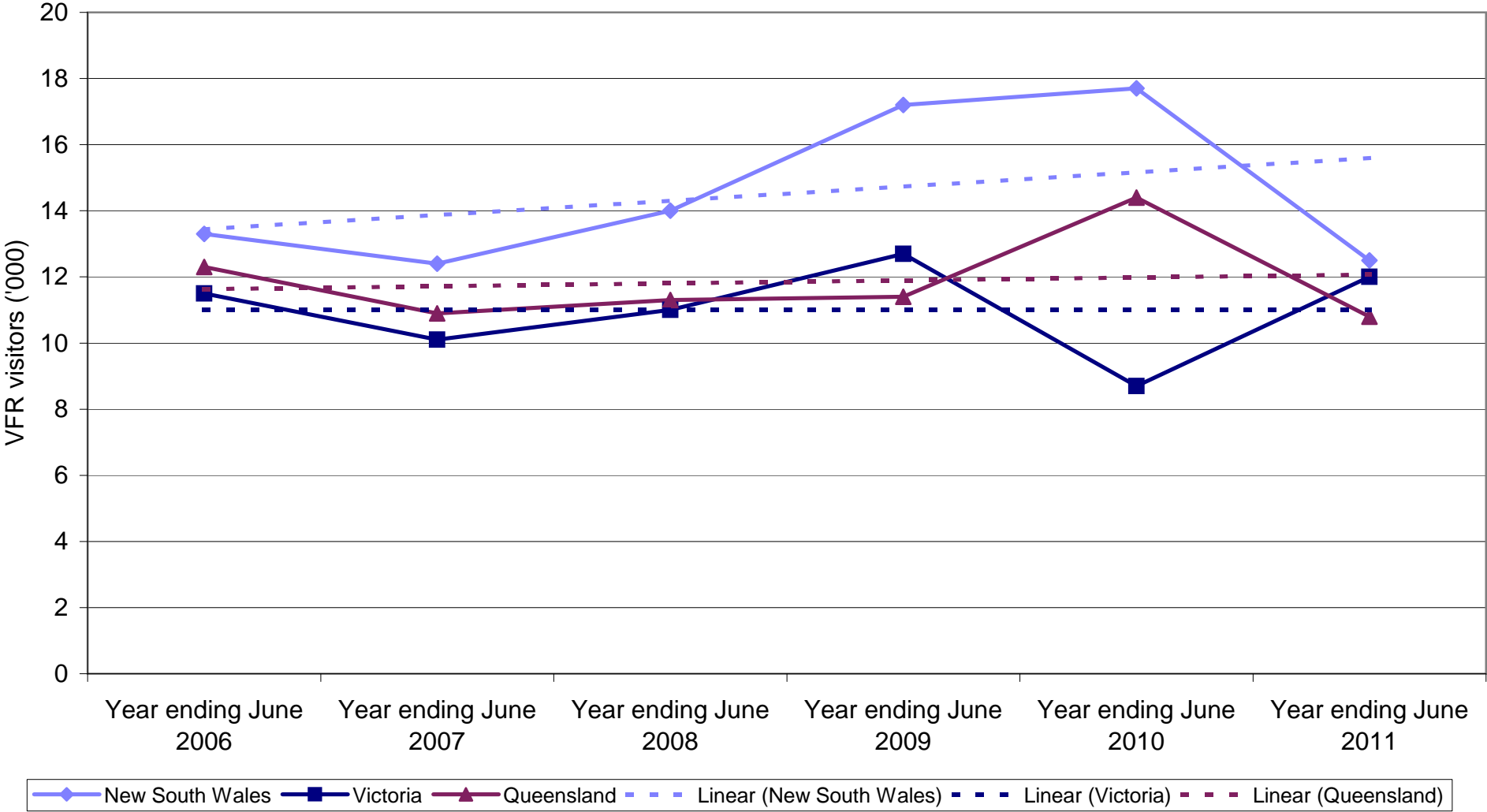


Legend: New South Wales (blue line with diamond), Victoria (dark blue line with square), Queensland (maroon line with triangle), Linear (New South Wales) (dashed blue), Linear (Victoria) (dashed dark blue), Linear (Queensland) (dashed maroon)

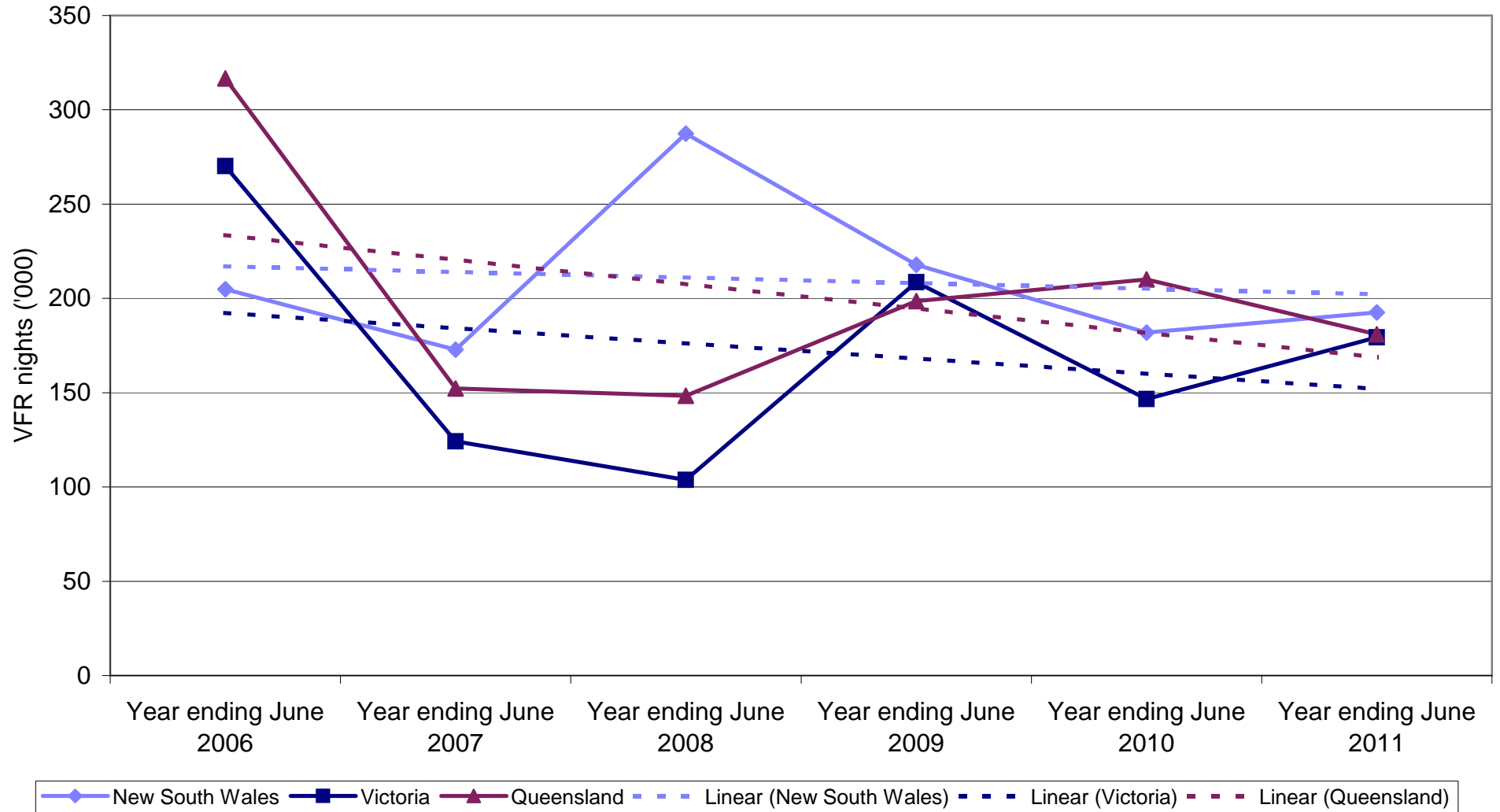
State market share of German holiday nights to Australia



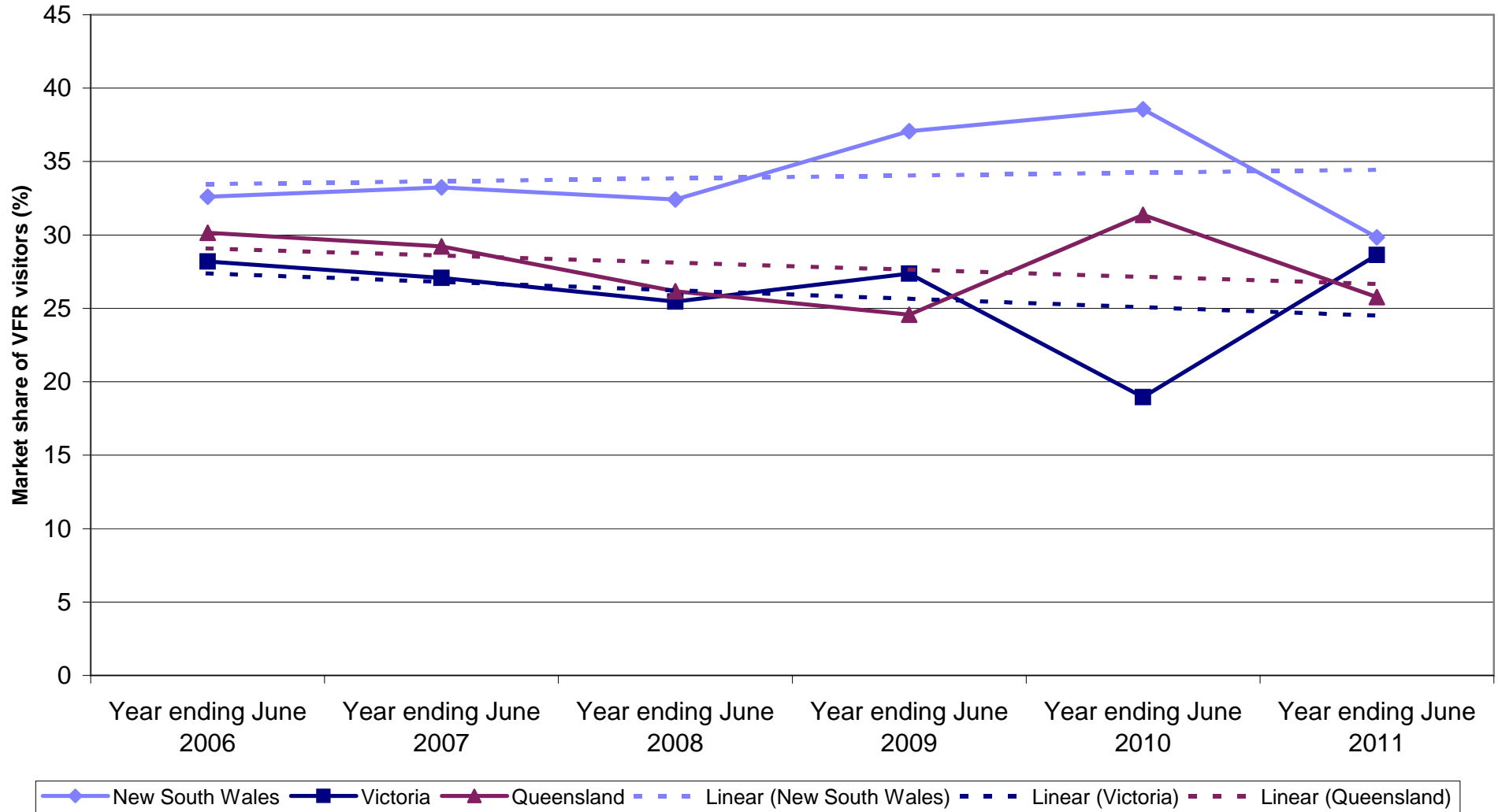
German VFR visitors by State visited



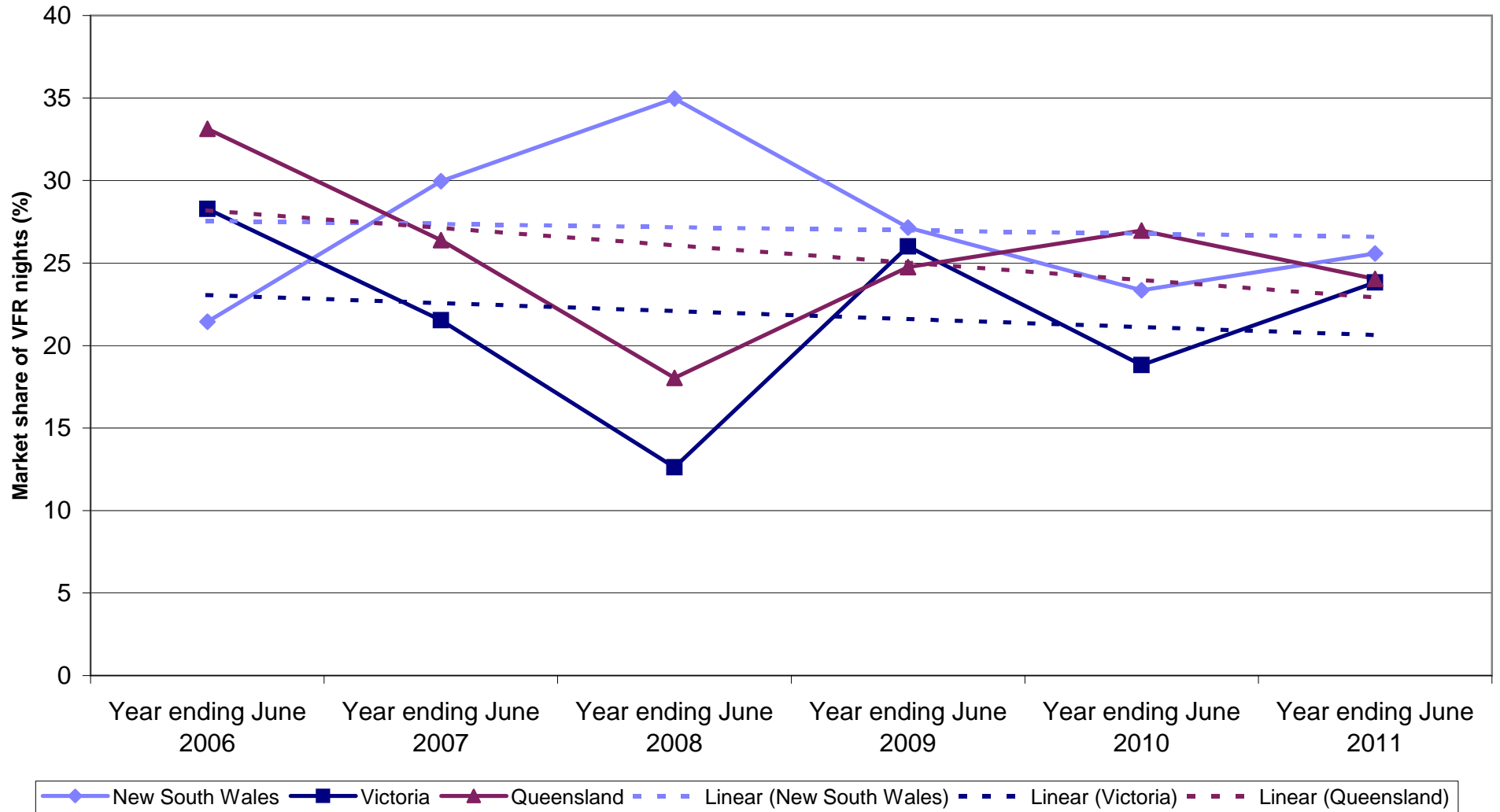
German VFR nights by State visited



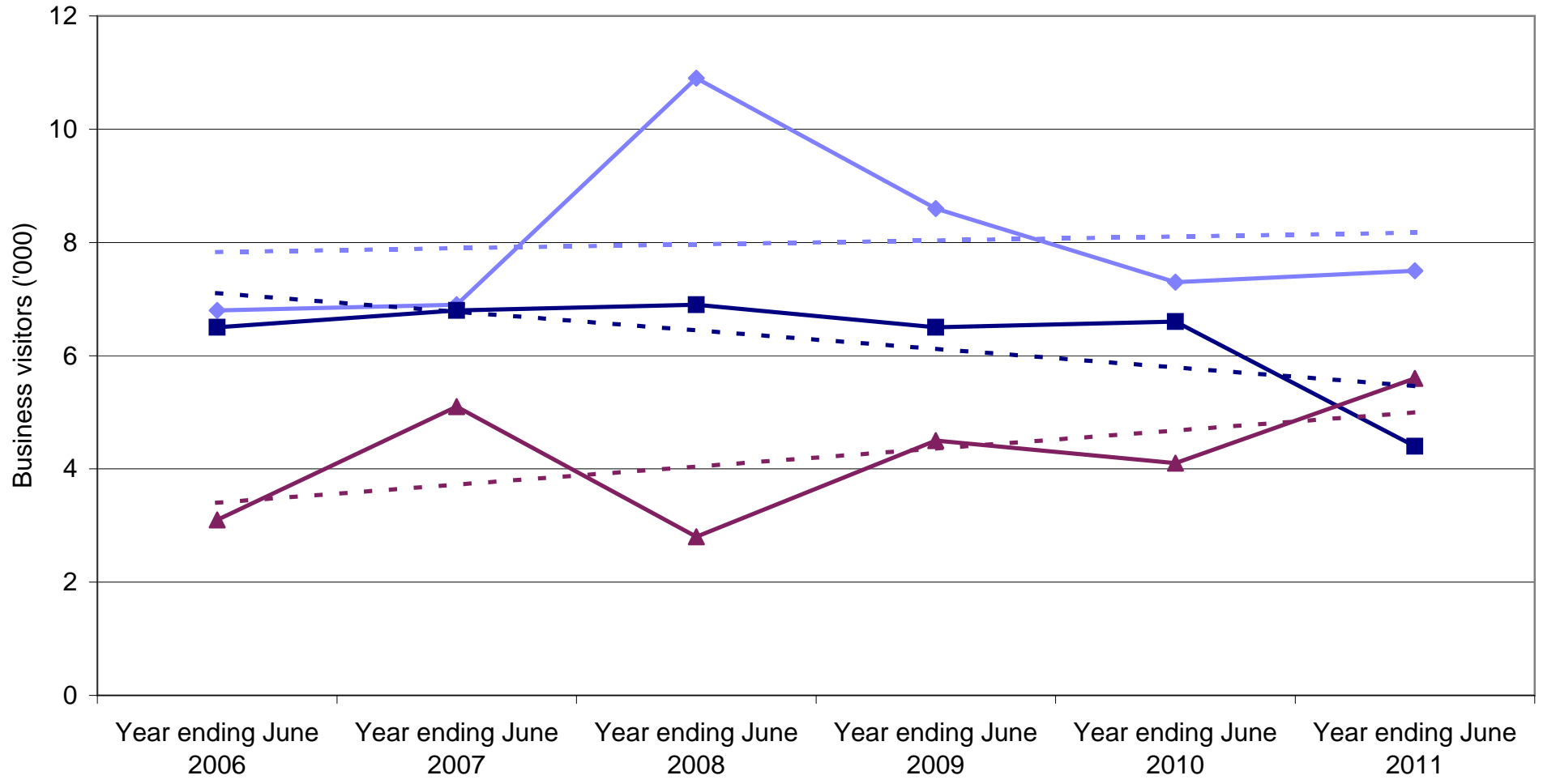
State market share of German VFR visitors to Australia



State market share of German VFR nights to Australia

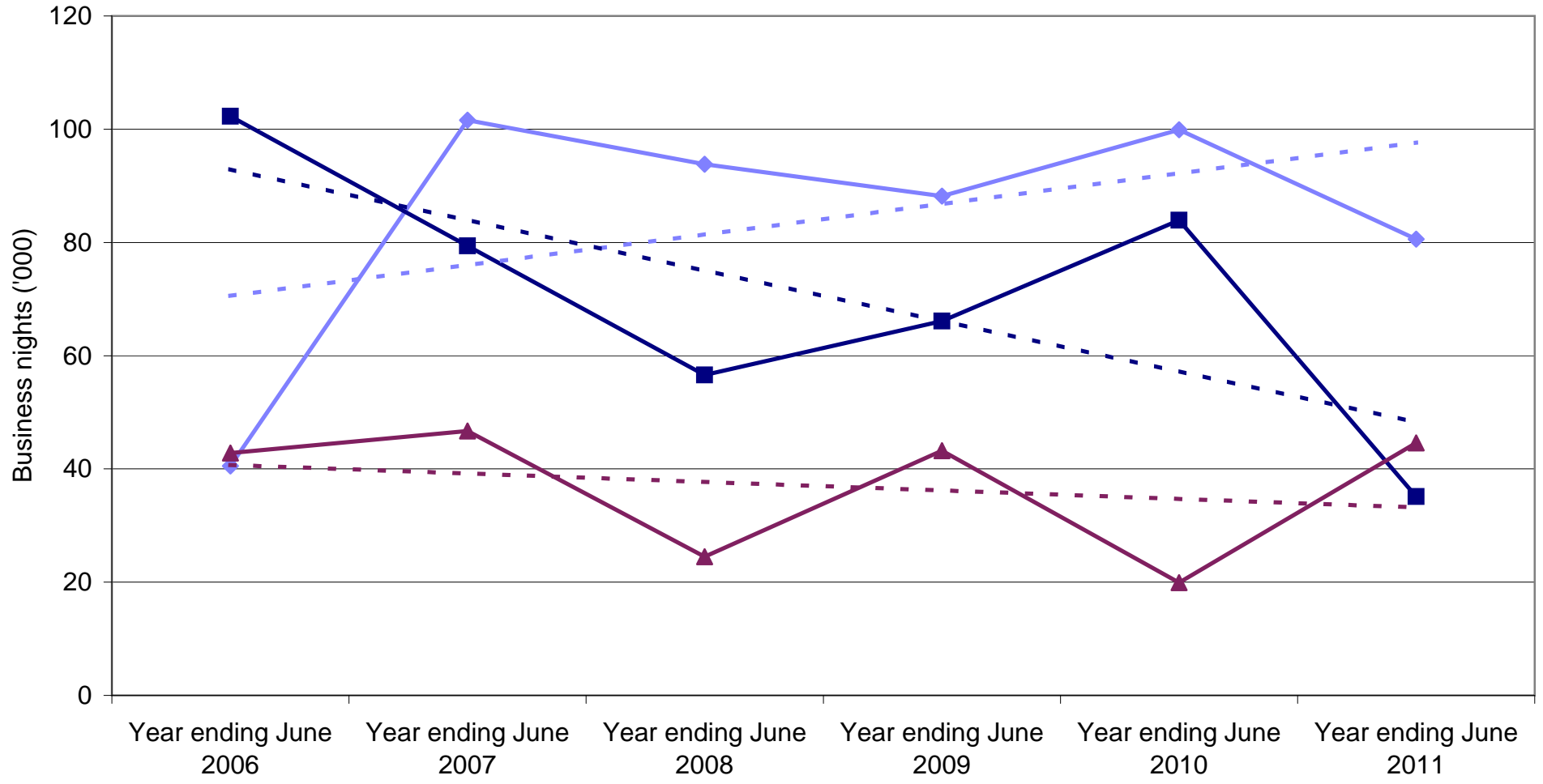


German Business visitors by State visited



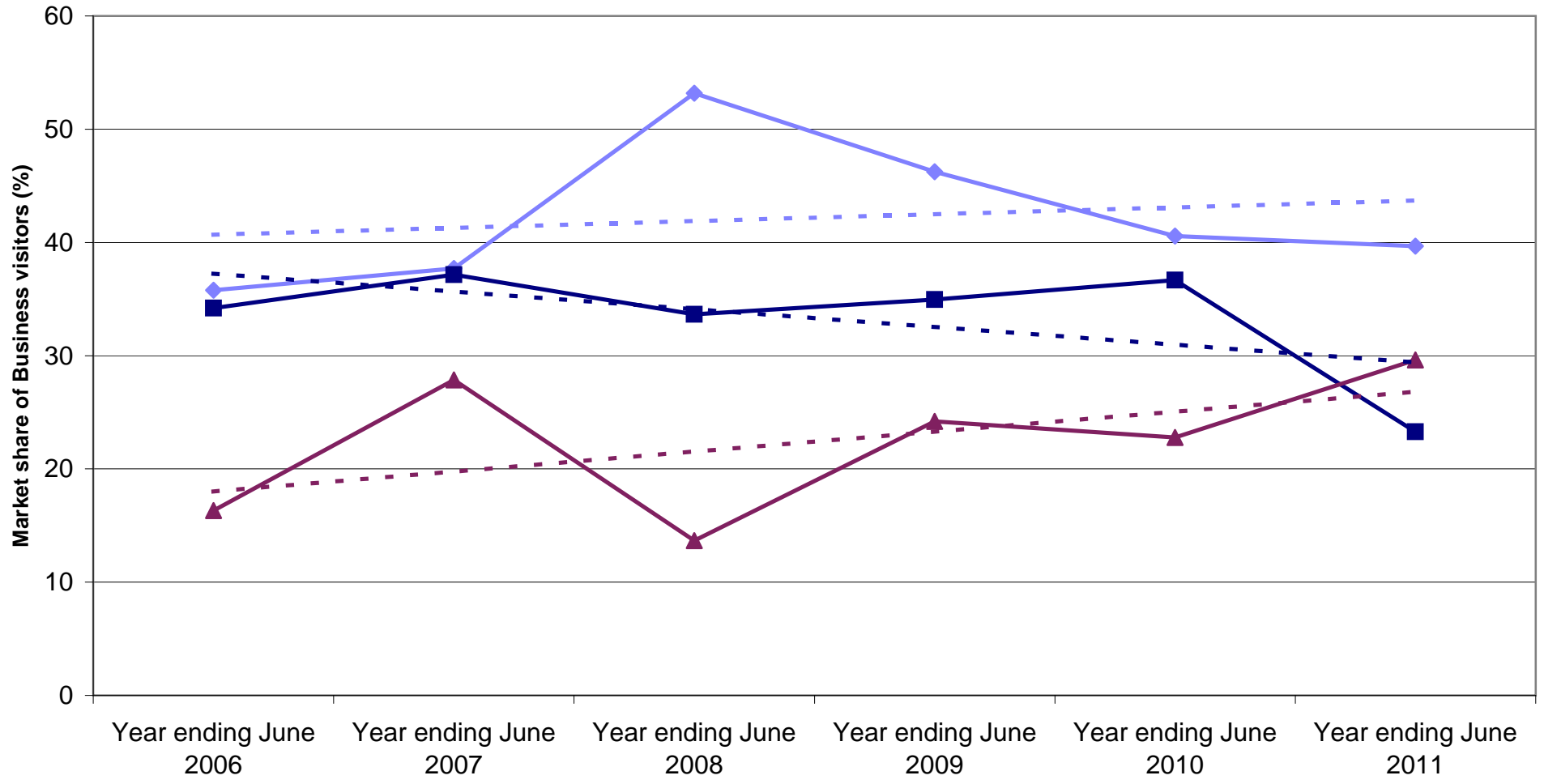
◆ New South Wales
 ■ Victoria
 ▲ Queensland
 - - - Linear (New South Wales)
 - - - Linear (Victoria)
 - - - Linear (Queensland)

German Business nights by State visited



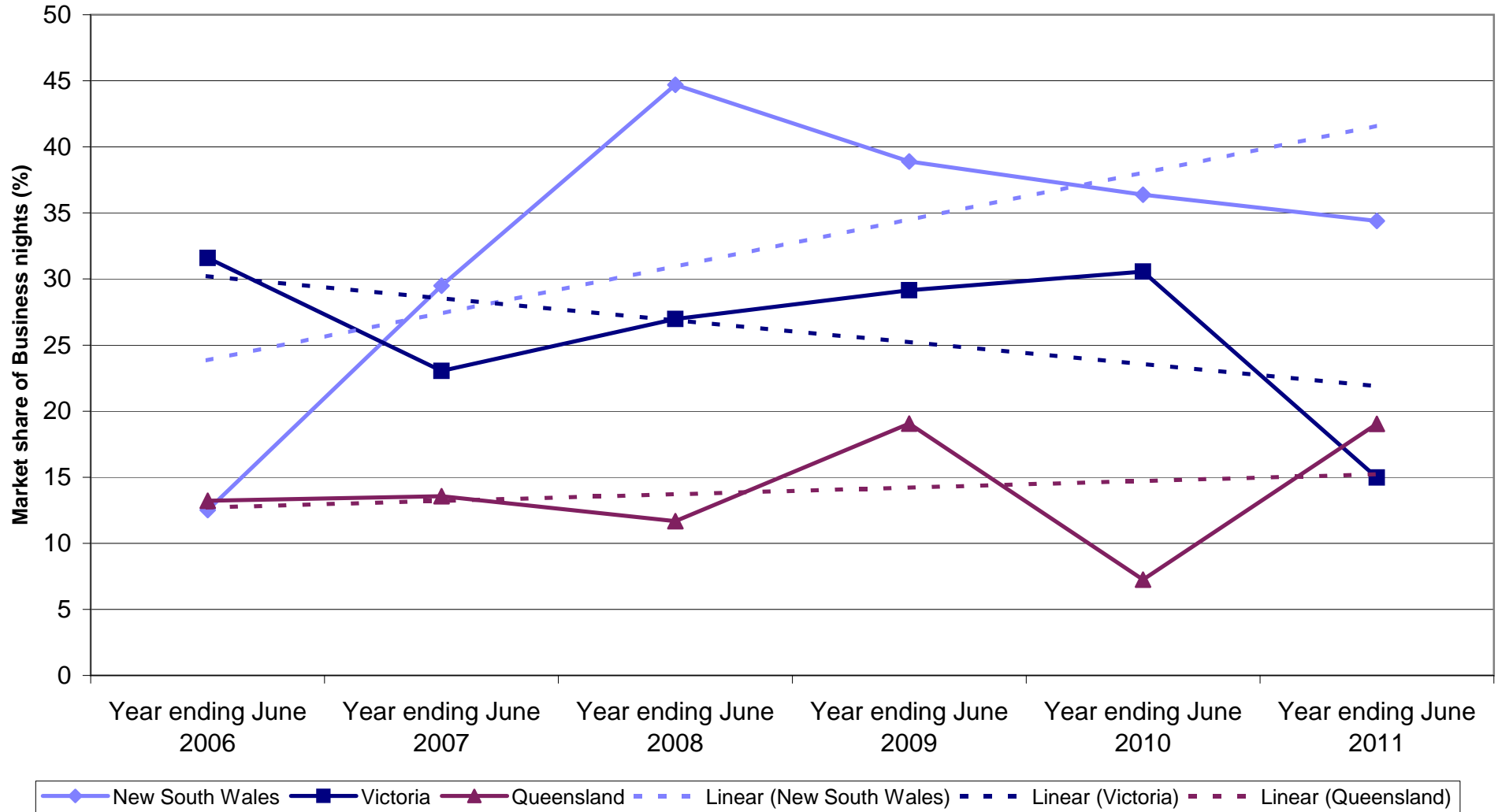
Legend: New South Wales (solid blue line with diamond markers), Victoria (solid dark blue line with square markers), Queensland (solid maroon line with triangle markers), Linear (New South Wales) (dashed light blue line), Linear (Victoria) (dashed dark blue line), Linear (Queensland) (dashed maroon line).

State market share of German Business visitors to Australia

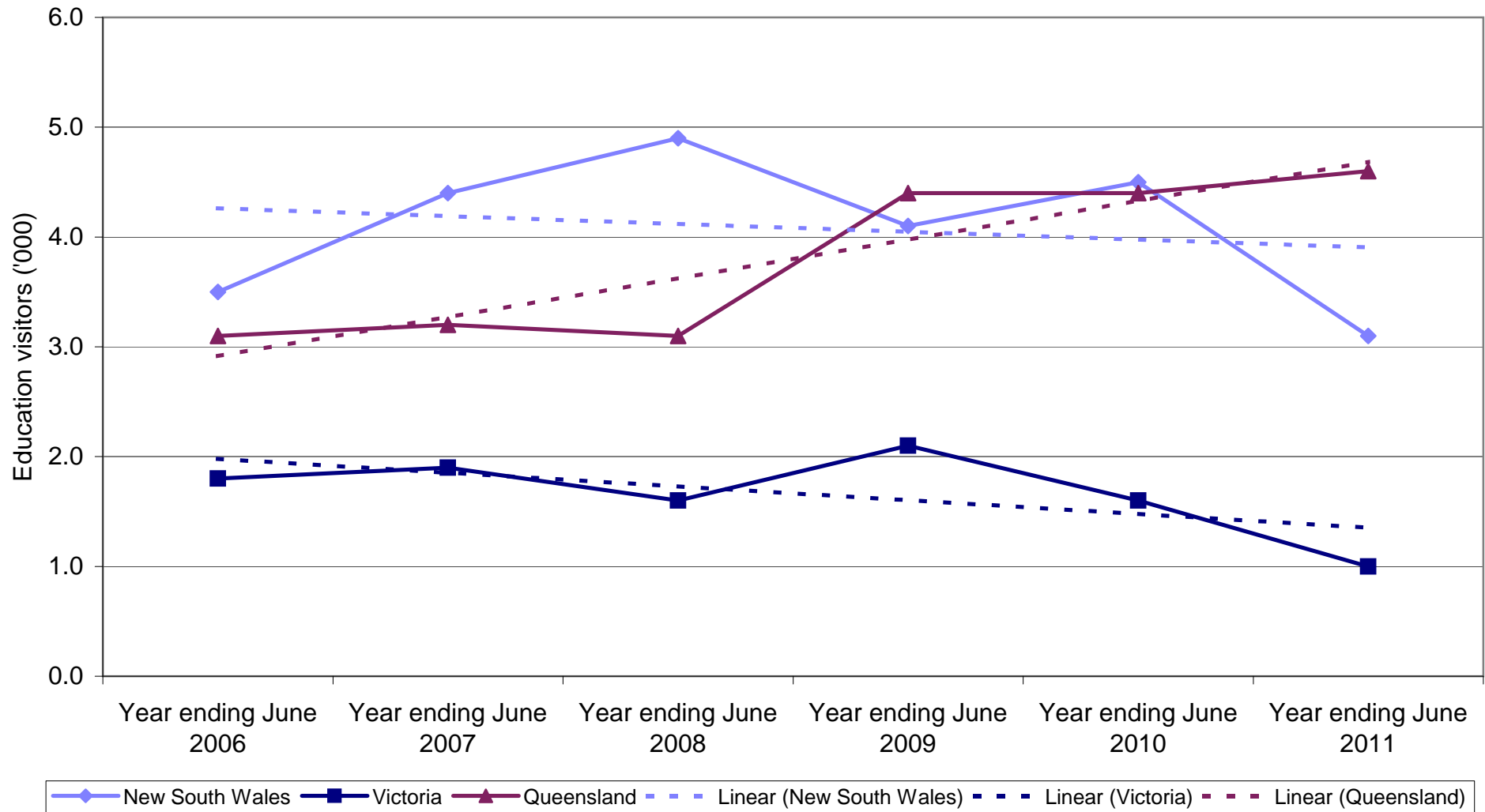


◆ New South Wales
 ■ Victoria
 ▲ Queensland
 - - - Linear (New South Wales)
 - - - Linear (Victoria)
 - - - Linear (Queensland)

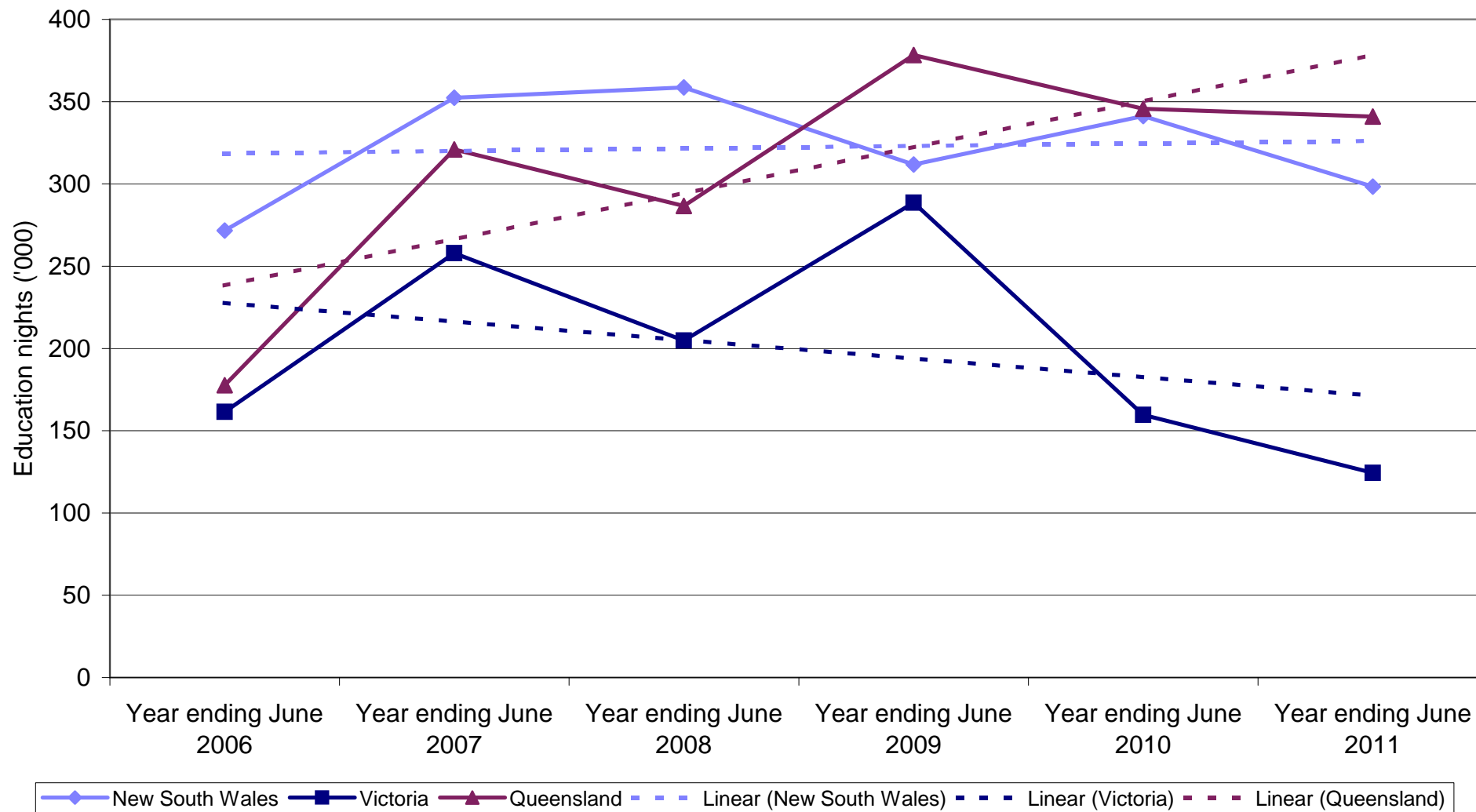
State market share of German Business nights to Australia



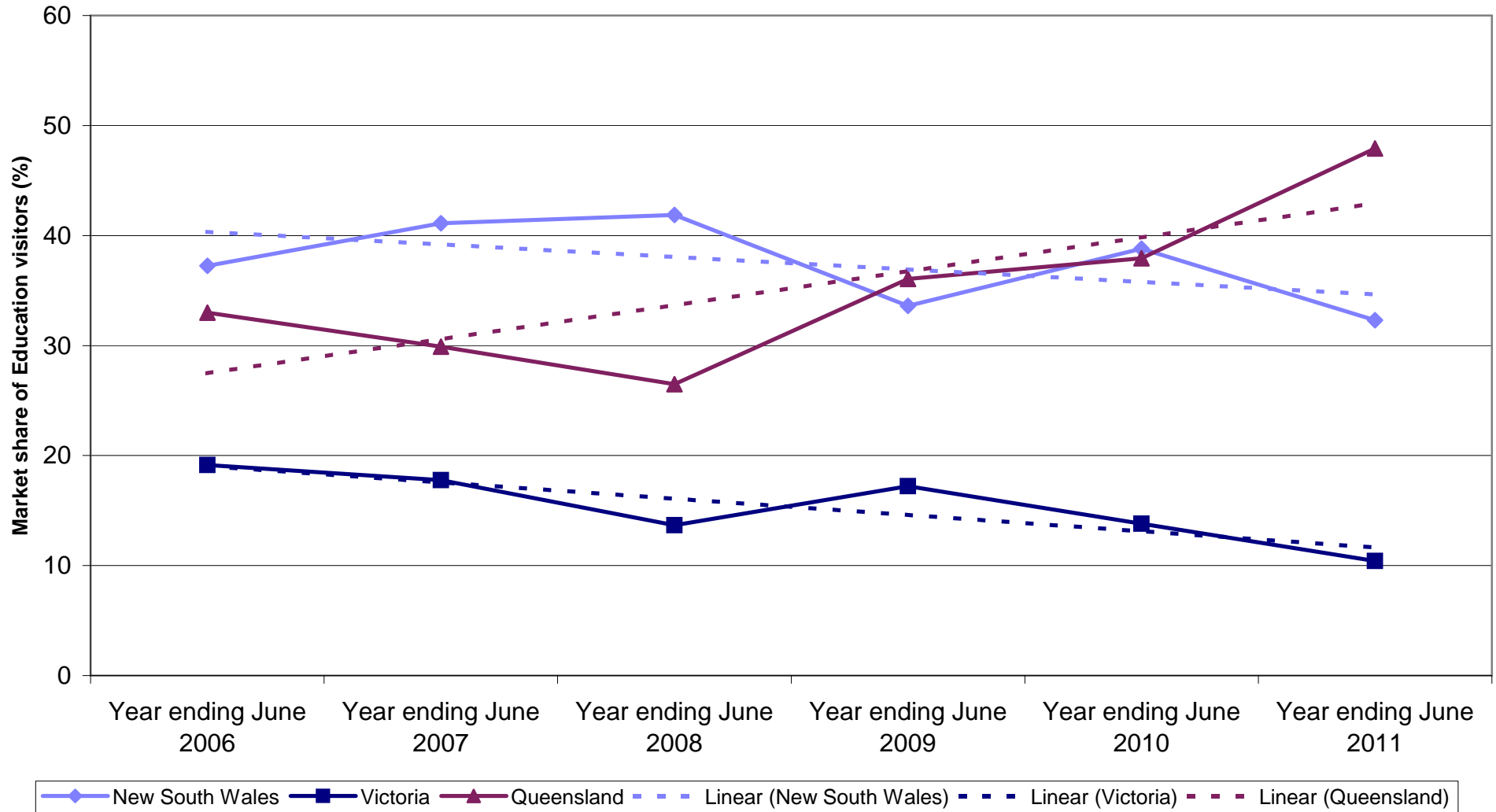
German Education visitors by State visited



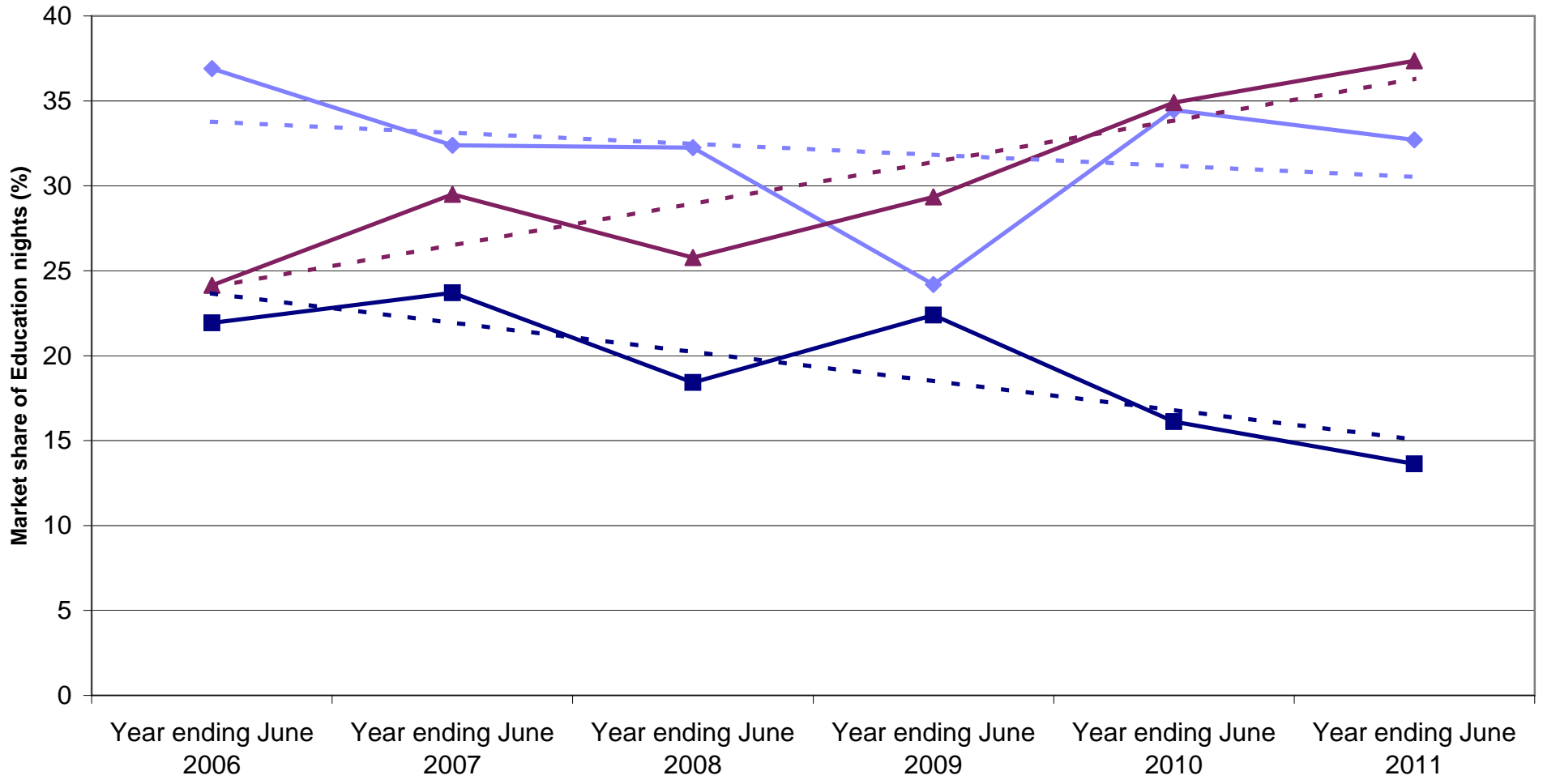
German Education nights by State visited



State market share of German Education visitors to Australia

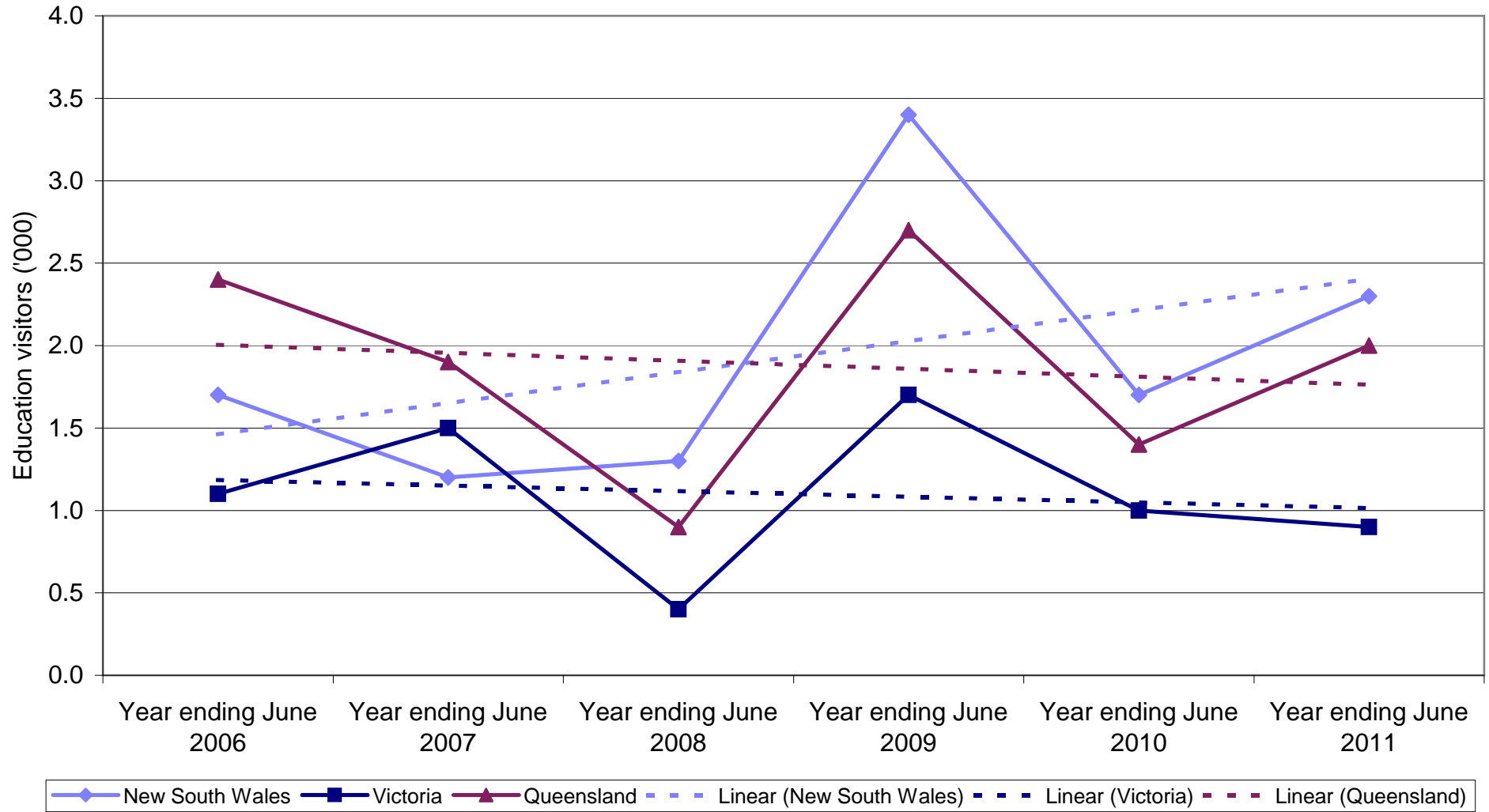


State market share of German Education nights to Australia

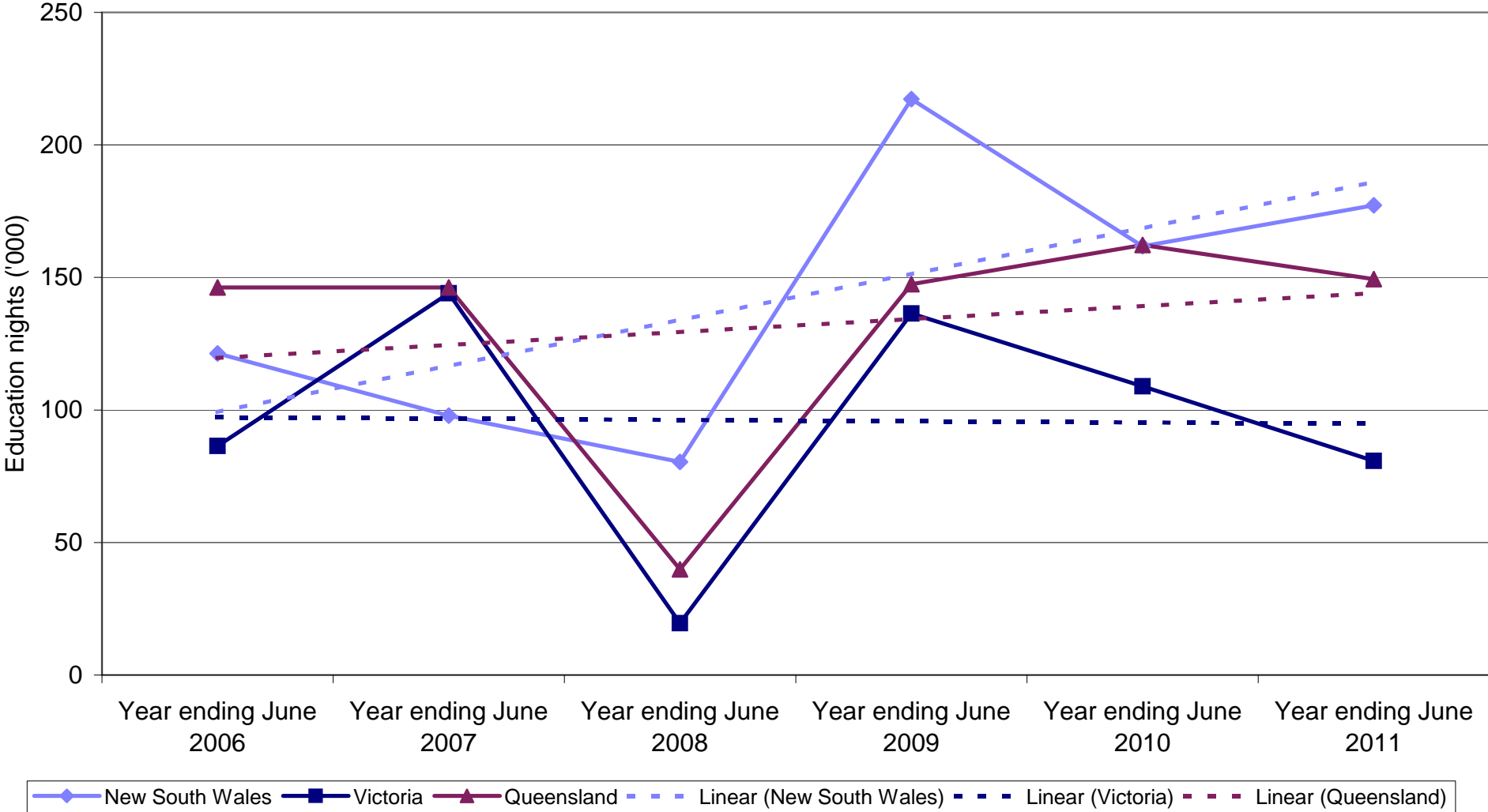


◆ New South Wales
 ■ Victoria
 ▲ Queensland
 - - - Linear (New South Wales)
 - - - Linear (Victoria)
 - - - Linear (Queensland)

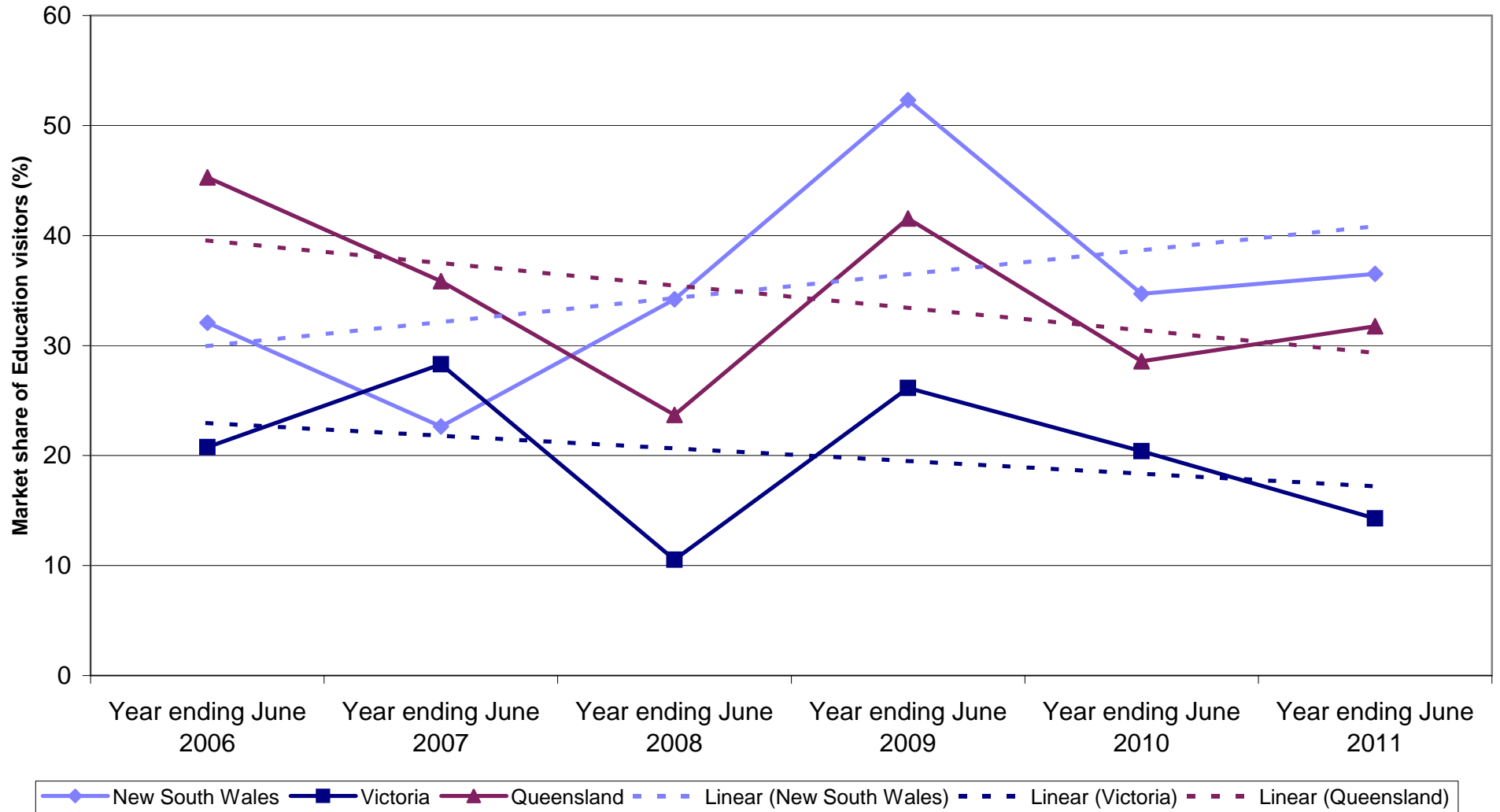
German Employment visitors by State visited



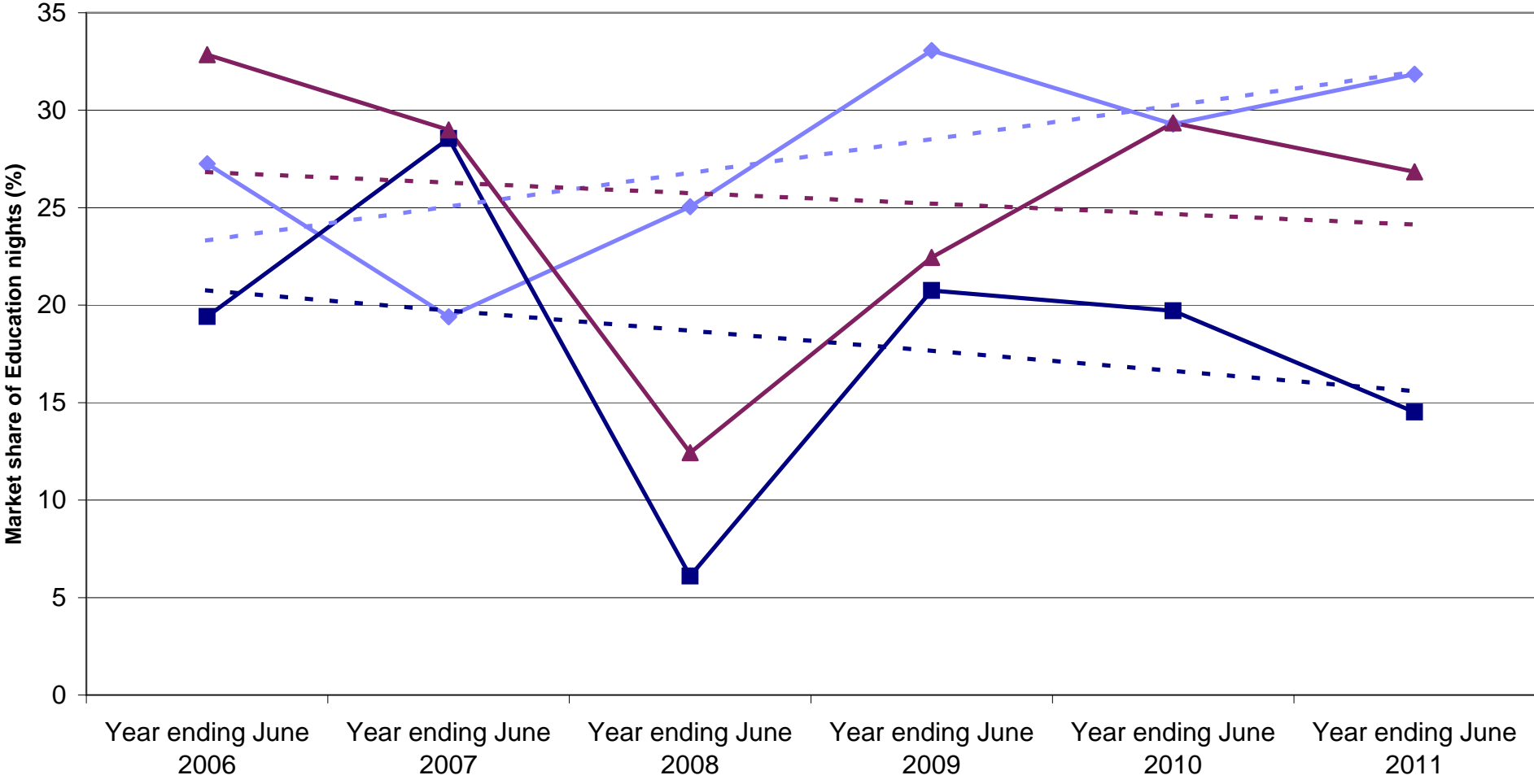
German Employment nights by State visited



State market share of German Employment visitors to Australia



State market share of German Employment nights to Australia



◆ New South Wales
 ■ Victoria
 ▲ Queensland
 - - - Linear (New South Wales)
 - - - Linear (Victoria)
 - - - Linear (Queensland)