

## Hong Kong - Times Series Year ending June 2006 - 2011

By stopover reason for visit

Holiday visitors ('000)	State visited	Year ending June 2006	Year ending June 2007	Year ending June 2008	Year ending June 2009	Year ending June 2010	Year ending June 2011
		New South Wales	37	38	32	33	36
	Victoria	15	16	15	17	18	20
	Queensland	23	28	25	24	25	25
	<b>Total</b>	<b>62</b>	<b>61</b>	<b>57</b>	<b>60</b>	<b>62</b>	<b>70</b>

Market share of holiday visitors (per cent)	State visited	Year ending June 2006	Year ending June 2007	Year ending June 2008	Year ending June 2009	Year ending June 2010	Year ending June 2011
		New South Wales	59.9	62.9	56.3	54.3	58.4
	Victoria	23.8	25.8	26.7	27.7	29.0	29.0
	Queensland	37.7	45.8	43.0	39.8	40.8	34.9

Holiday visitor nights ('000)	State visited	Year ending June 2006	Year ending June 2007	Year ending June 2008	Year ending June 2009	Year ending June 2010	Year ending June 2011
		New South Wales	250	294	317	376	477
	Victoria	80	111	152	204	222	145
	Queensland	168	165	196	245	373	291
	<b>Total</b>	<b>603</b>	<b>641</b>	<b>881</b>	<b>1,008</b>	<b>1,416</b>	<b>1,148</b>

Market share of holiday visitor nights (per cent)	State visited	Year ending June 2006	Year ending June 2007	Year ending June 2008	Year ending June 2009	Year ending June 2010	Year ending June 2011
		New South Wales	41.4	45.9	36.0	37.3	33.7
	Victoria	13.3	17.3	17.2	20.2	15.7	12.6
	Queensland	27.8	25.7	22.3	24.3	26.3	25.4

VFR visitors ('000)	State visited	Year ending June 2006	Year ending June 2007	Year ending June 2008	Year ending June 2009	Year ending June 2010	Year ending June 2011
		New South Wales	28	23	25	29	22
	Victoria	11	11	11	13	14	14
	Queensland	11	9	11	8	12	11
	<b>Total</b>	<b>53</b>	<b>49</b>	<b>48</b>	<b>54</b>	<b>53</b>	<b>56</b>

Market share of VFR visitors (per cent)	State visited	Year ending June 2006	Year ending June 2007	Year ending June 2008	Year ending June 2009	Year ending June 2010	Year ending June 2011
		New South Wales	52.6	45.9	52.4	53.1	41.5
	Victoria	21.2	22.2	23.0	23.7	26.3	25.8
	Queensland	19.7	18.7	23.4	15.2	22.7	19.9

VFR visitor nights ('000)	State visited	Year ending June 2006	Year ending June 2007	Year ending June 2008	Year ending June 2009	Year ending June 2010	Year ending June 2011
		New South Wales	576	460	344	348	281
	Victoria	124	186	114	154	223	268
	Queensland	124	108	115	101	158	113
	<b>Total</b>	<b>926</b>	<b>869</b>	<b>640</b>	<b>770</b>	<b>763</b>	<b>870</b>

Market share of VFR visitor nights (per cent)	State visited	Year ending June 2006	Year ending June 2007	Year ending June 2008	Year ending June 2009	Year ending June 2010	Year ending June 2011
		New South Wales	62.2	52.9	53.7	45.2	36.9
	Victoria	13.4	21.4	17.9	20.0	29.2	30.8
	Queensland	13.4	12.5	17.9	13.2	20.7	12.9

Source: International Visitor Survey.

Base: All visitors aged 15 years and over travel grid completed.

## Hong Kong - Times Series Year ending June 2006 - 2011

Business visitors ('000)	State visited	Year ending June 2006	Year ending June 2007	Year ending June 2008	Year ending June 2009	Year ending June 2010	Year ending June 2011
		New South Wales	12	16	19	16	13
	Victoria	9	5	5	7	9	11
	Queensland	4	6	3	3	4	6
	<b>Total</b>	<b>22</b>	<b>27</b>	<b>26</b>	<b>25</b>	<b>24</b>	<b>29</b>

Market share of business visitors (per cent)	State visited	Year ending June 2006	Year ending June 2007	Year ending June 2008	Year ending June 2009	Year ending June 2010	Year ending June 2011
		New South Wales	51.8	60.6	74.5	66.9	55.1
	Victoria	37.9	20.1	19.2	29.4	37.0	38.2
	Queensland	15.6	22.3	11.8	11.8	14.4	19.5

Business visitor nights ('000)	State visited	Year ending June 2006	Year ending June 2007	Year ending June 2008	Year ending June 2009	Year ending June 2010	Year ending June 2011
		New South Wales	92	100	102	88	76
	Victoria	59	25	33	67	60	87
	Queensland	30	43	15	13	31	30
	<b>Total</b>	<b>192</b>	<b>184</b>	<b>160</b>	<b>183</b>	<b>172</b>	<b>254</b>

Market share of business visitor nights (per cent)	State visited	Year ending June 2006	Year ending June 2007	Year ending June 2008	Year ending June 2009	Year ending June 2010	Year ending June 2011
		New South Wales	47.8	54.2	64.1	48.2	44.3
	Victoria	30.8	13.8	20.7	36.7	34.7	34.5
	Queensland	15.6	23.6	9.3	7.0	17.9	11.8

Education visitors ('000)	State visited	Year ending June 2006	Year ending June 2007	Year ending June 2008	Year ending June 2009	Year ending June 2010	Year ending June 2011
		New South Wales	4.7	5.4	6.5	5.7	7.9
	Victoria	4.7	4.2	2.9	4.5	4.2	4.1
	Queensland	3.1	4.7	6.5	2.2	1.7	1.7
	<b>Total</b>	<b>15.1</b>	<b>16.6</b>	<b>17.6</b>	<b>16.7</b>	<b>18.3</b>	<b>19.8</b>

Market share of Education visitors (per cent)	State visited	Year ending June 2006	Year ending June 2007	Year ending June 2008	Year ending June 2009	Year ending June 2010	Year ending June 2011
		New South Wales	31.1	32.5	36.9	34.1	43.2
	Victoria	31.1	25.3	16.5	26.9	23.0	20.7
	Queensland	20.5	28.3	36.9	13.2	9.3	8.6

Education visitor nights ('000)	State visited	Year ending June 2006	Year ending June 2007	Year ending June 2008	Year ending June 2009	Year ending June 2010	Year ending June 2011
		New South Wales	723	827	881	922	1,130
	Victoria	699	534	445	641	494	543
	Queensland	361	535	836	258	250	217
	<b>Total</b>	<b>2,211</b>	<b>2,424</b>	<b>2,354</b>	<b>2,476</b>	<b>2,757</b>	<b>2,592</b>

Market share of Education visitor nights (per cent)	State visited	Year ending June 2006	Year ending June 2007	Year ending June 2008	Year ending June 2009	Year ending June 2010	Year ending June 2011
		New South Wales	32.7	34.1	37.4	37.3	41.0
	Victoria	31.6	22.0	18.9	25.9	17.9	20.9
	Queensland	16.3	22.1	35.5	10.4	9.1	8.4

Employment visitors ('000)	State visited	Year ending June 2006	Year ending June 2007	Year ending June 2008	Year ending June 2009	Year ending June 2010	Year ending June 2011
		New South Wales	0.3	1.1	0.7	0.4	0.6
	Victoria	0.2	0.4	0.1	-	0.7	0.1
	Queensland	0.7	0.5	0.0	0.7	0.0	0.1
	<b>Total</b>	<b>1.4</b>	<b>1.8</b>	<b>0.9</b>	<b>1.8</b>	<b>1.8</b>	<b>0.9</b>

Market share of Employment visitors (per cent)	State visited	Year ending June 2006	Year ending June 2007	Year ending June 2008	Year ending June 2009	Year ending June 2010	Year ending June 2011
		New South Wales	21.4	61.1	77.8	22.2	33.3
	Victoria	14.3	22.2	11.1	#VALUE!	38.9	11.1
	Queensland	50.0	27.8	-	38.9	-	11.1



## Hong Kong - Times Series Year ending June 2006 - 2011

		Year ending June 2006	Year ending June 2007	Year ending June 2008	Year ending June 2009	Year ending June 2010	Year ending June 2011
<b>Employment visitor nights (’000)</b>	<b>State visited</b>						
	New South Wales	25	24	44	20	9	20
	Victoria	5	8	4 -		5	48
	Queensland	53	6	10	42	1	8
	<b>Total</b>	152	118	58	128	128	98

		Year ending June 2006	Year ending June 2007	Year ending June 2008	Year ending June 2009	Year ending June 2010	Year ending June 2011
<b>Market share of Employment visitor nights (per cent)</b>	<b>State visited</b>						
	New South Wales	16.4	20.6	76.0	15.6	6.6	19.9
	Victoria	3.0	7.0	6.4	#VALUE!	3.7	49.1
	Queensland	35.1	5.3	17.6	32.9	0.8	8.1

		Year ending June 2006	Year ending June 2007	Year ending June 2008	Year ending June 2009	Year ending June 2010	Year ending June 2011
<b>Total visitors (’000)</b>	<b>State visited</b>						
	New South Wales	79.1	81.3	79.9	80.6	78.4	84.5
	Victoria	39.7	35.4	33.4	39.5	44.8	49.9
	Queensland	41.9	44.8	41.9	35.2	40.2	40.5
	<b>Total</b>	142.3	138.5	132.9	136.2	141.3	154.7

		Year ending June 2006	Year ending June 2007	Year ending June 2008	Year ending June 2009	Year ending June 2010	Year ending June 2011
<b>Market share of total visitors (per cent)</b>	<b>State visited</b>						
	New South Wales	55.6	58.7	60.1	59.2	55.5	54.6
	Victoria	27.9	25.6	25.1	29.0	31.7	32.3
	Queensland	29.4	32.3	31.5	25.8	28.5	26.2

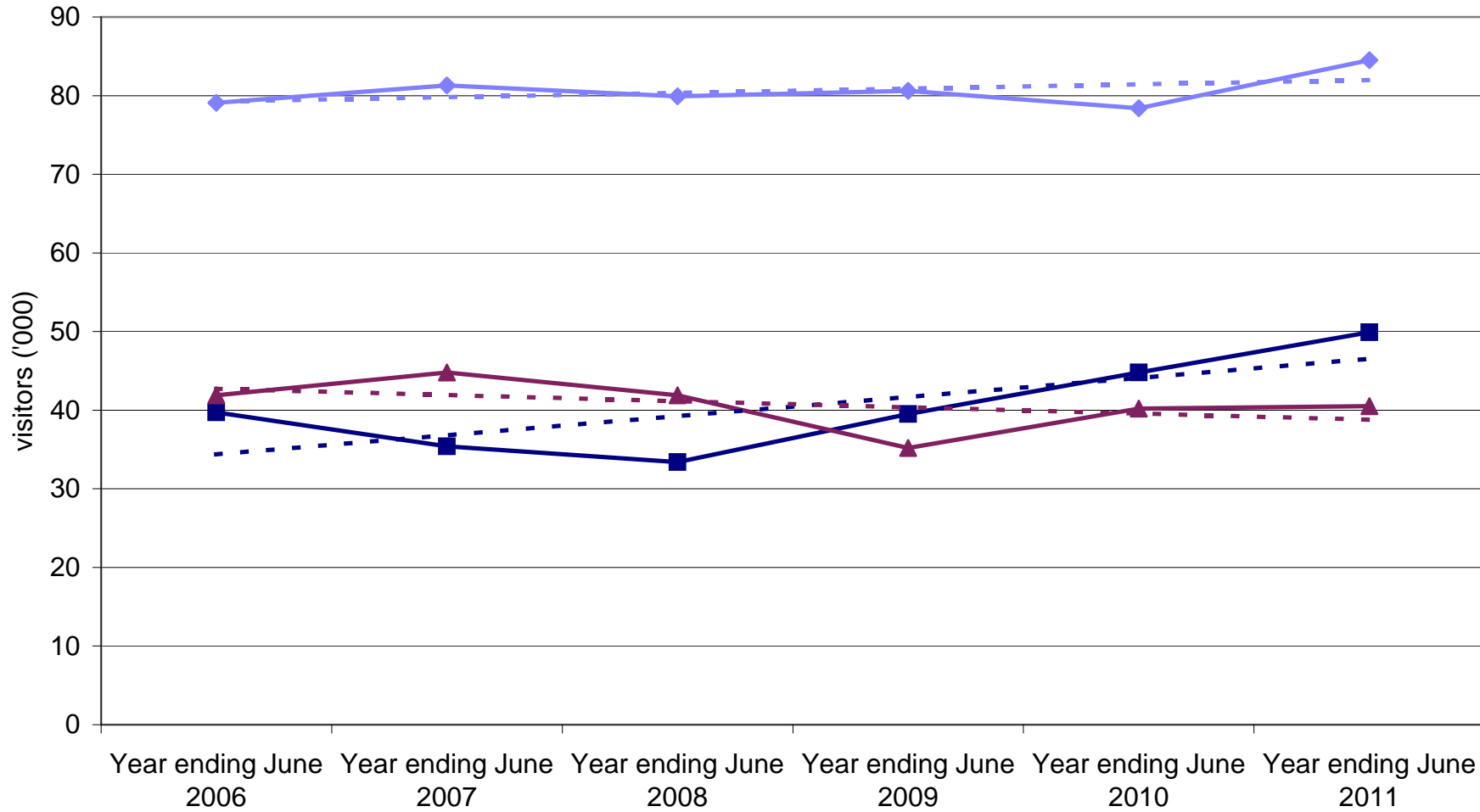
		Year ending June 2006	Year ending June 2007	Year ending June 2008	Year ending June 2009	Year ending June 2010	Year ending June 2011
<b>Total visitor nights (’000)</b>	<b>State visited</b>						
	New South Wales	1,702	1,708	1,696	1,757	1,974	2,197
	Victoria	1,015	866	748	1,068	1,005	1,093
	Queensland	741	858	1,172	664	816	659
	<b>Total</b>	4,182	4,244	4,105	4,577	5,247	4,970

		Year ending June 2006	Year ending June 2007	Year ending June 2008	Year ending June 2009	Year ending June 2010	Year ending June 2011
<b>Market share of total visitor nights (per cent)</b>	<b>State visited</b>						
	New South Wales	40.7	40.2	41.3	38.4	37.6	44.2
	Victoria	24.3	20.4	18.2	23.3	19.1	22.0
	Queensland	17.7	20.2	28.5	14.5	15.6	13.3

Source: International Visitor Survey.

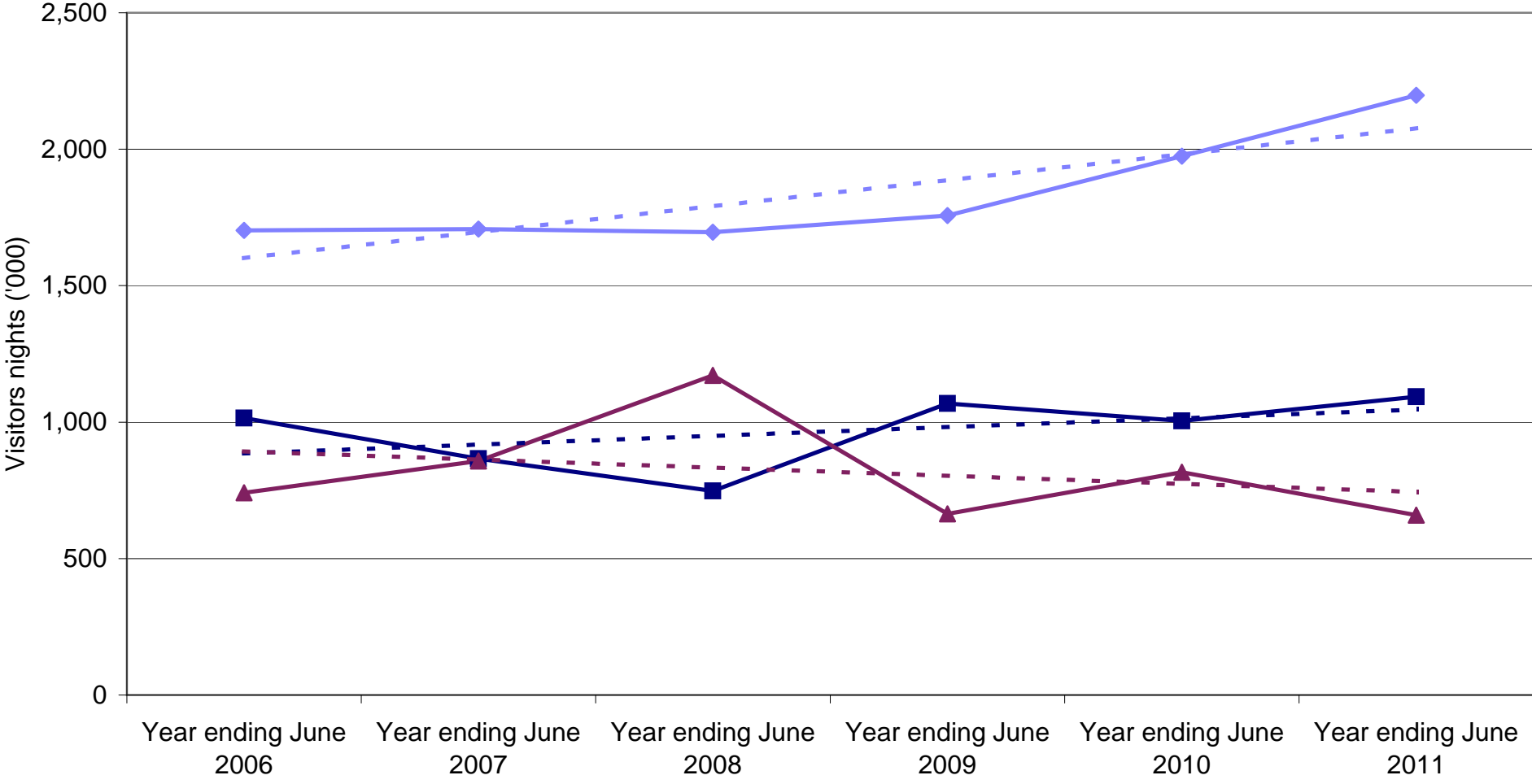
Base: All visitors aged 15 years and over travel grid completed.

### Hong Kong visitors by State visited



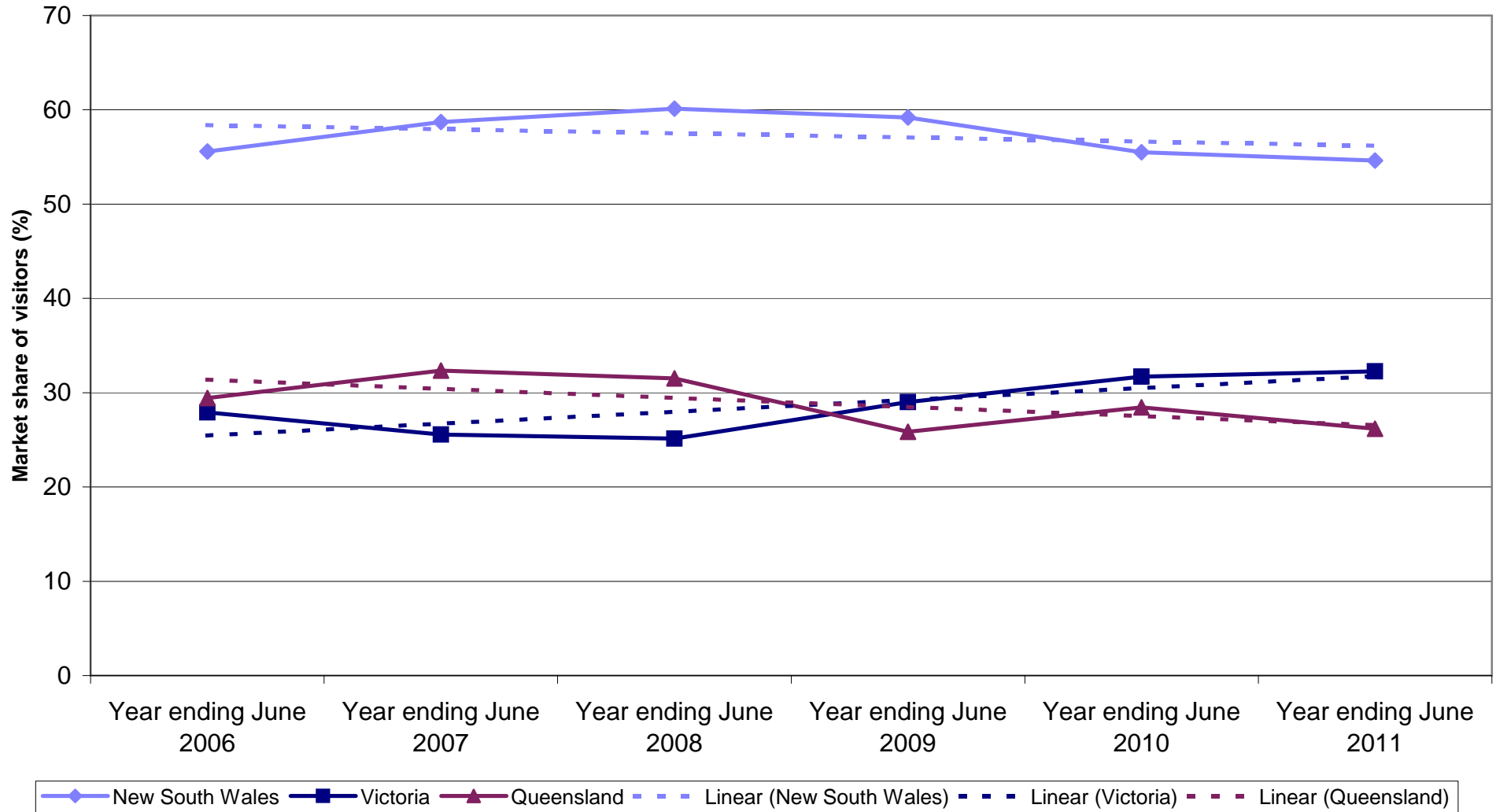
Legend: New South Wales (blue diamond), Victoria (dark blue square), Queensland (maroon triangle), Linear (New South Wales) (dashed blue), Linear (Victoria) (dashed dark blue), Linear (Queensland) (dashed maroon)

### Hong Kong nights by State visited

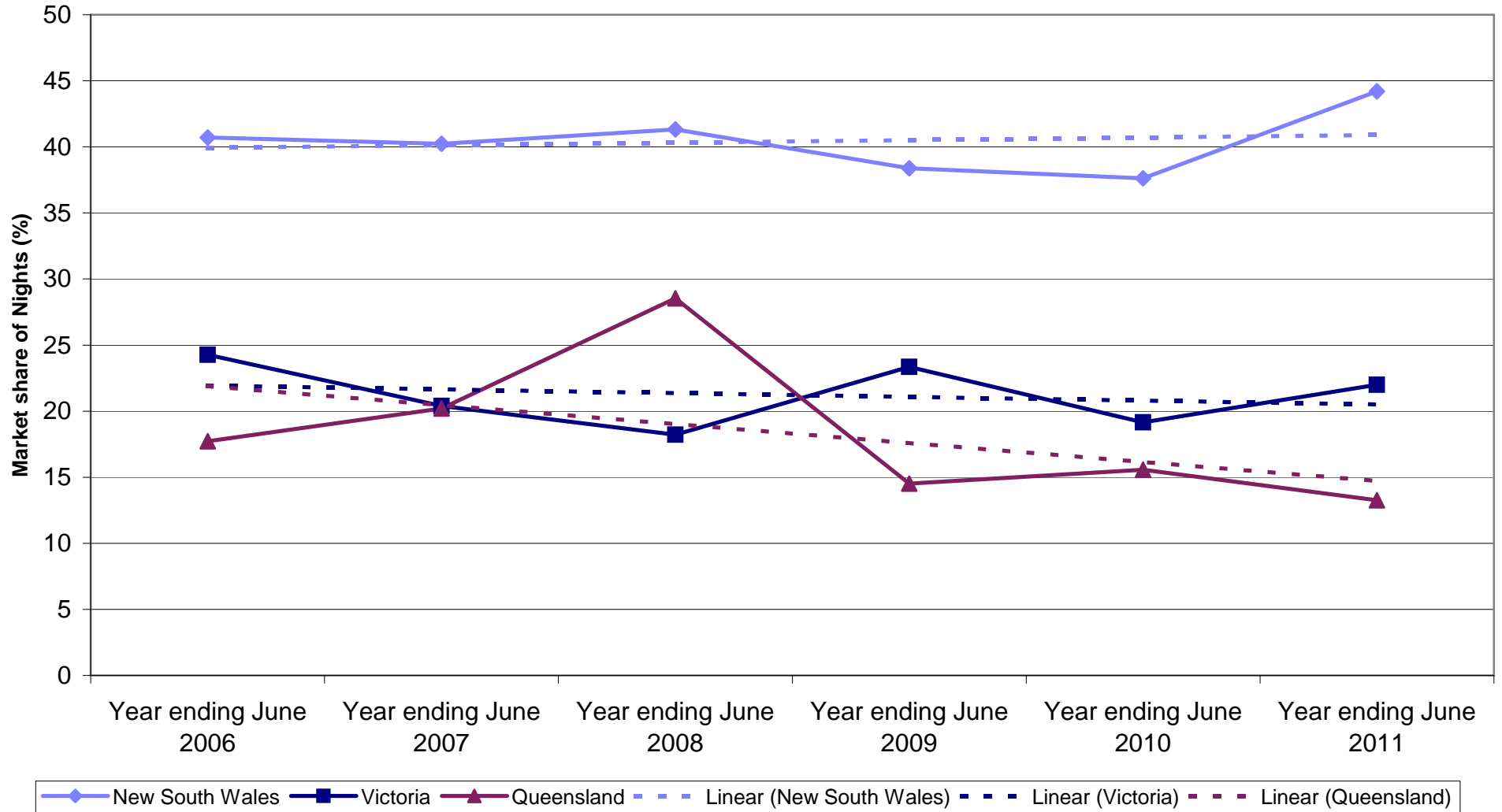


◆ New South Wales 
 ■ Victoria 
 ▲ Queensland 
 - - - Linear (New South Wales) 
 - - - Linear (Victoria) 
 - - - Linear (Queensland)

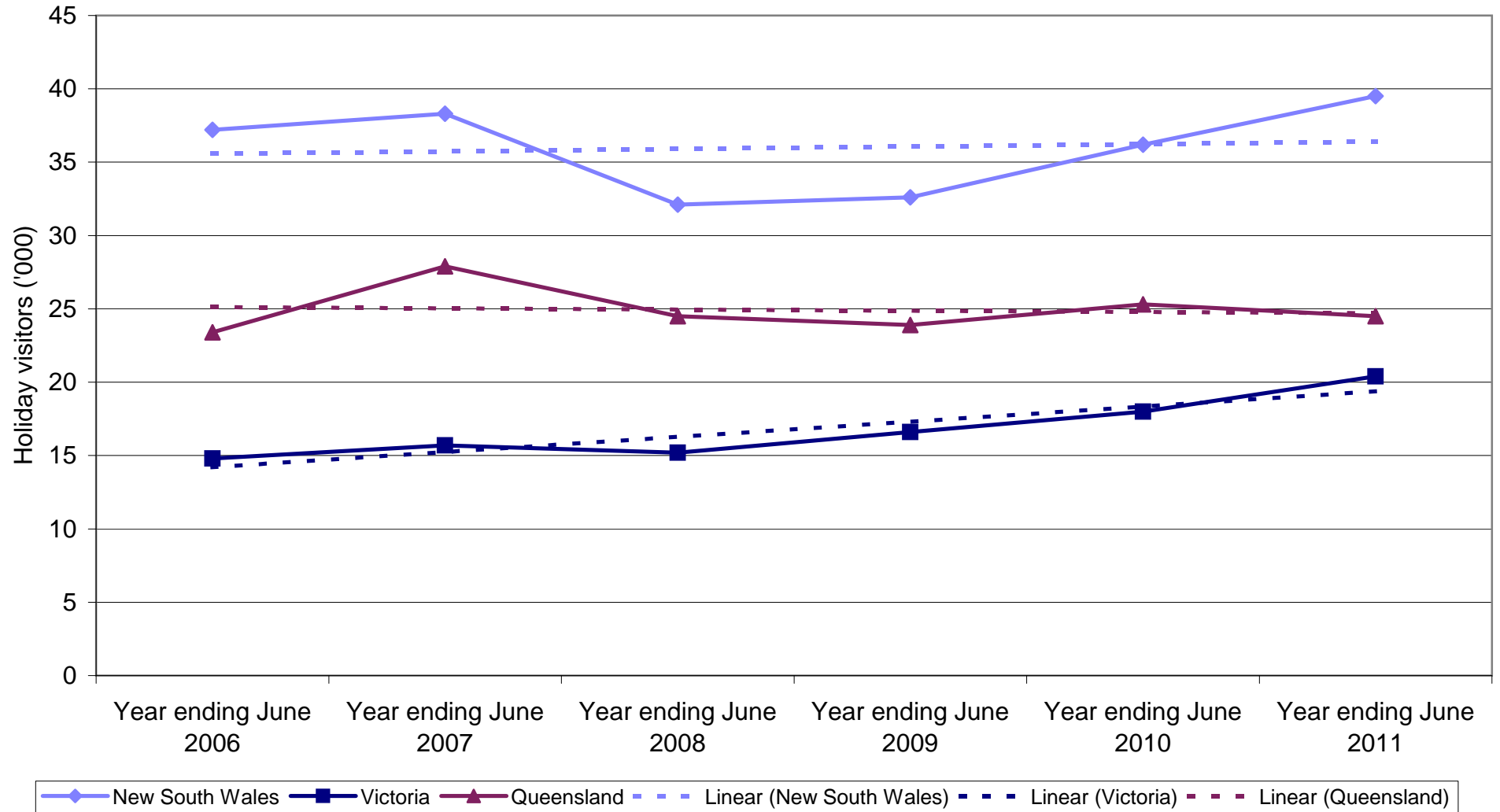
### State market share of Hong Kong visitors to Australia



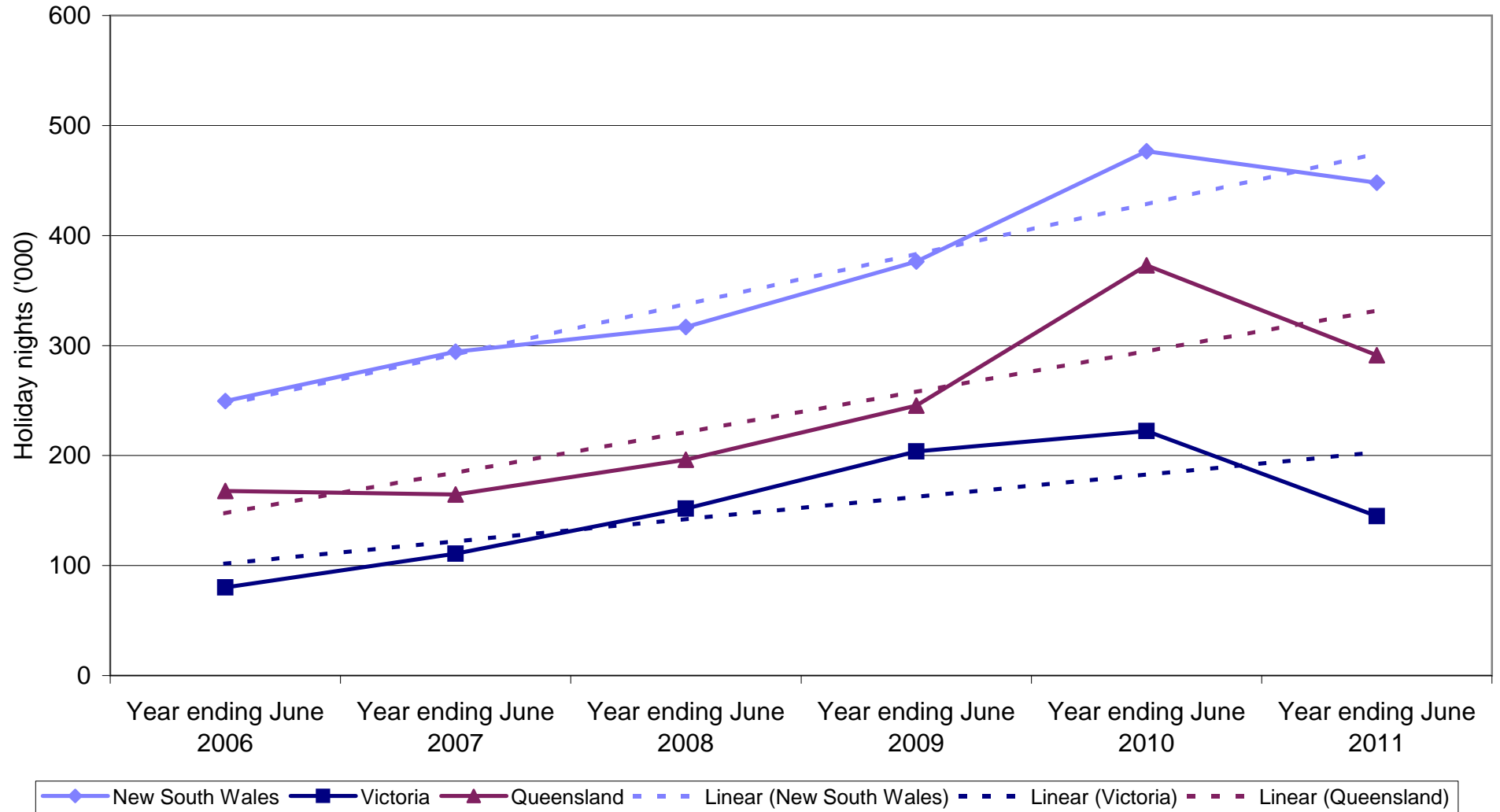
### State market share of Hong Kong nights to Australia



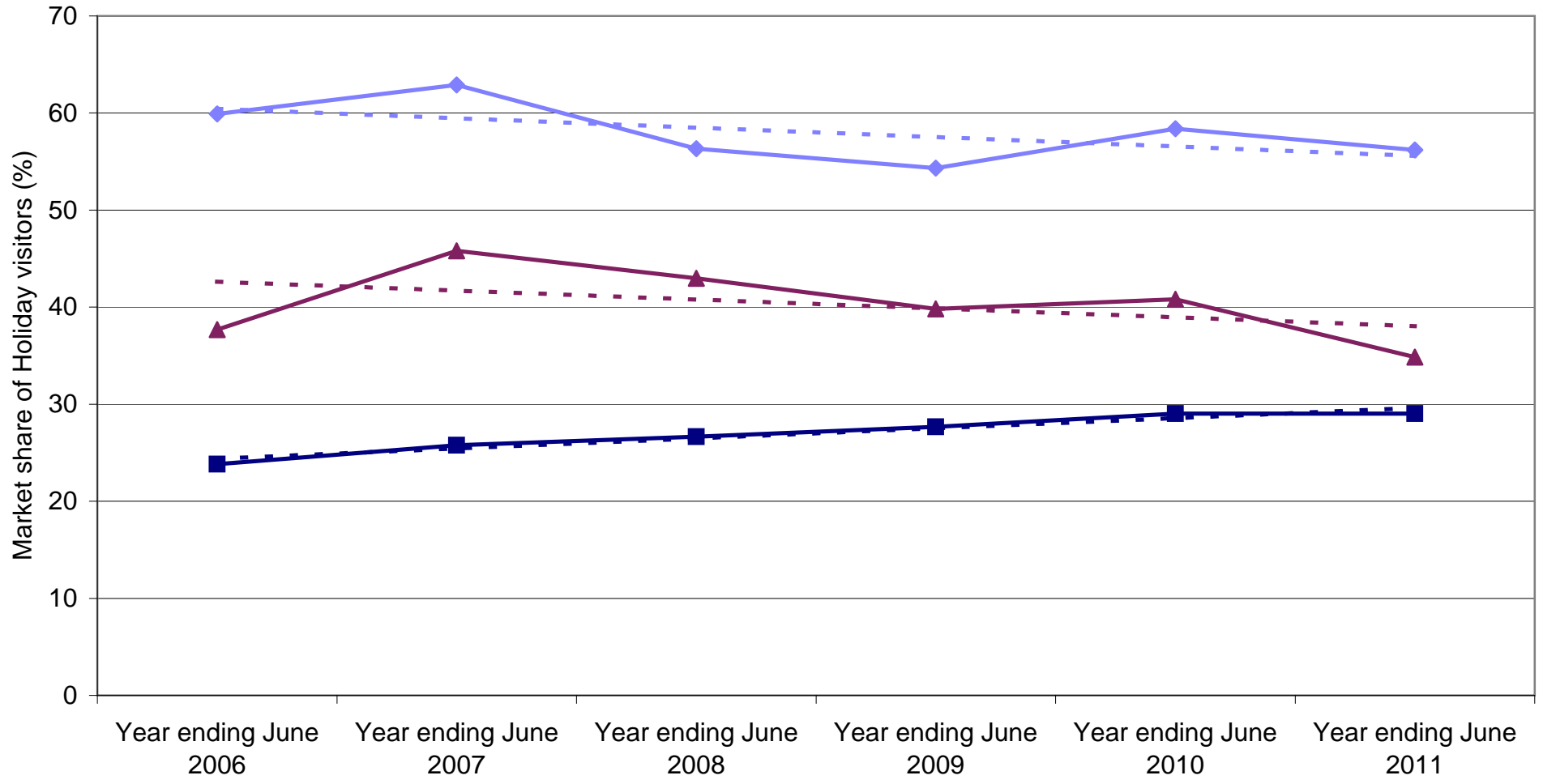
### Hong Kong holiday visitors by State visited



### Hong Kong holiday nights by State visited

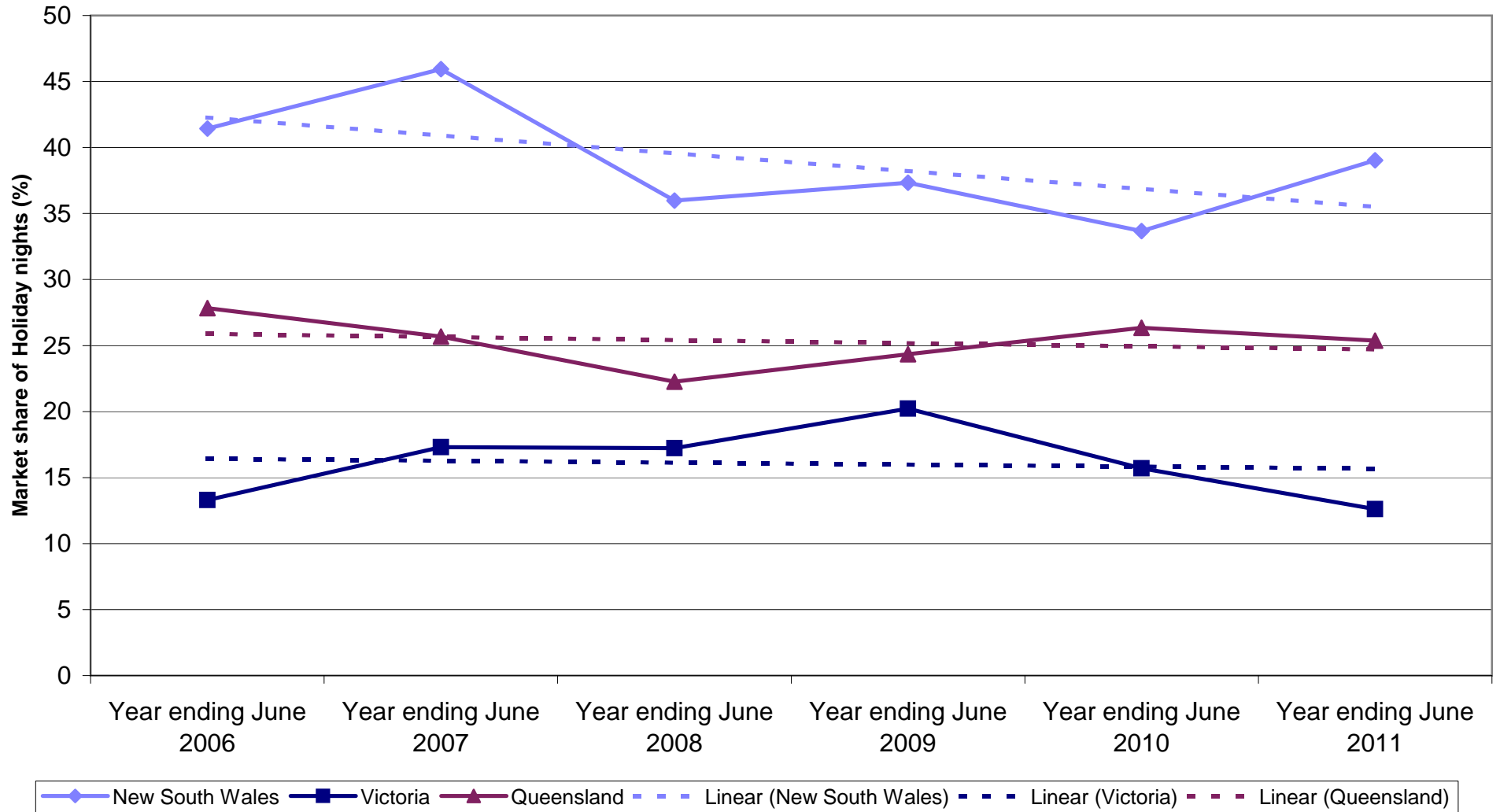


### State market share of Hong Kong holiday visitors to Australia

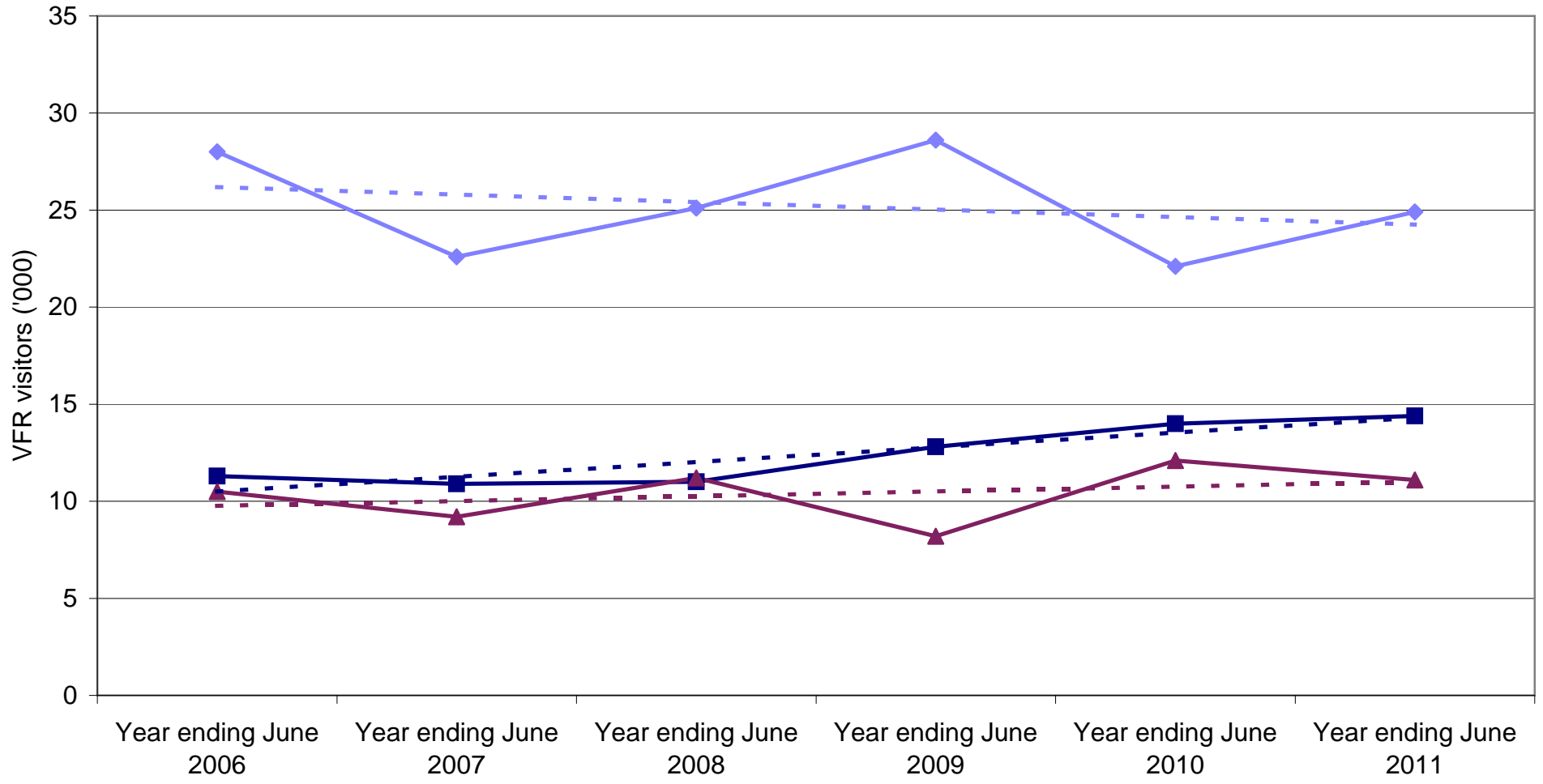


◆ New South Wales  
 ■ Victoria  
 ▲ Queensland  
 - - - Linear (New South Wales)  
 - - - Linear (Victoria)  
 - - - Linear (Queensland)

### State market share of Hong Kong holiday nights to Australia

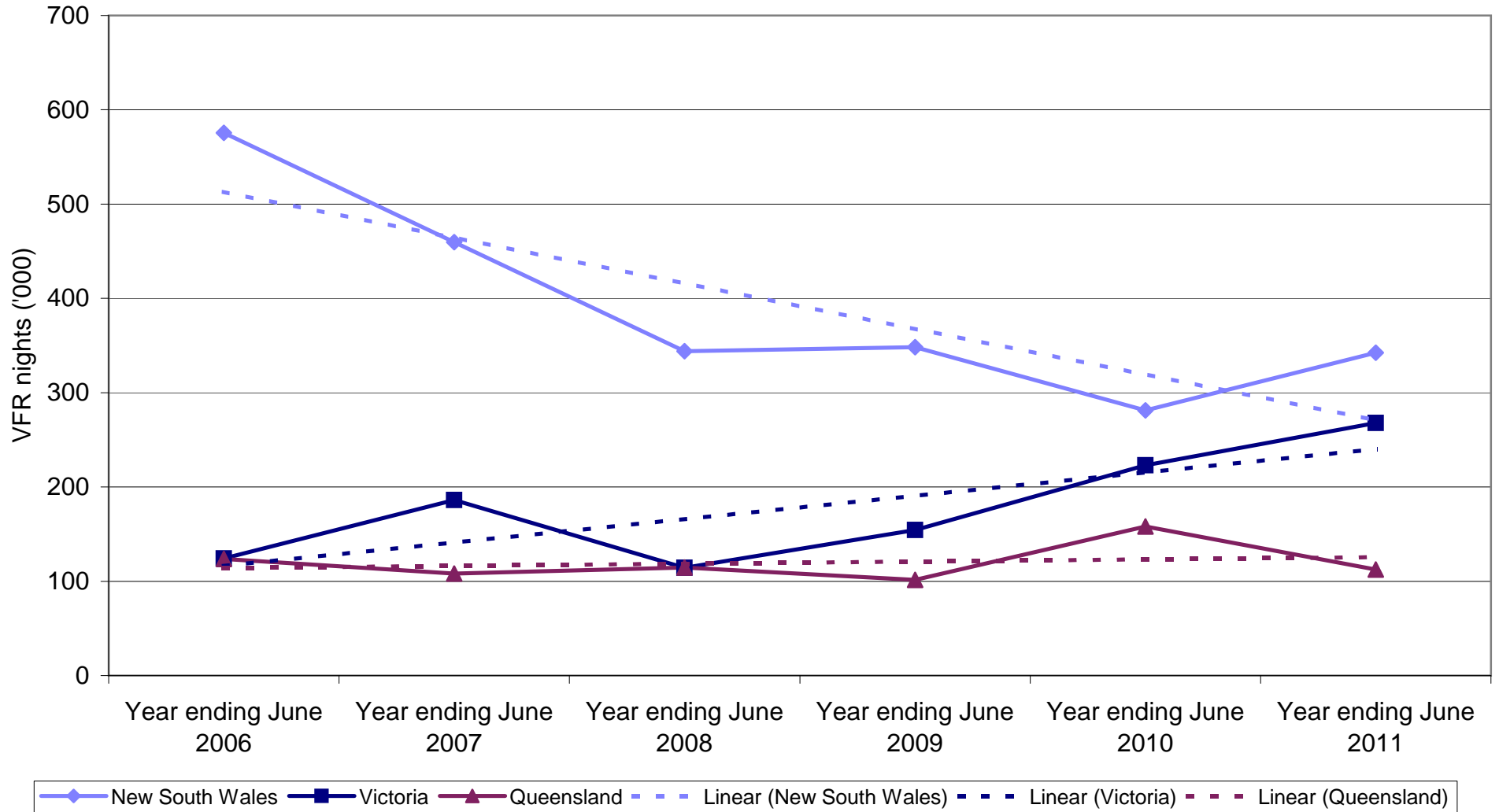


### Hong Kong VFR visitors by State visited

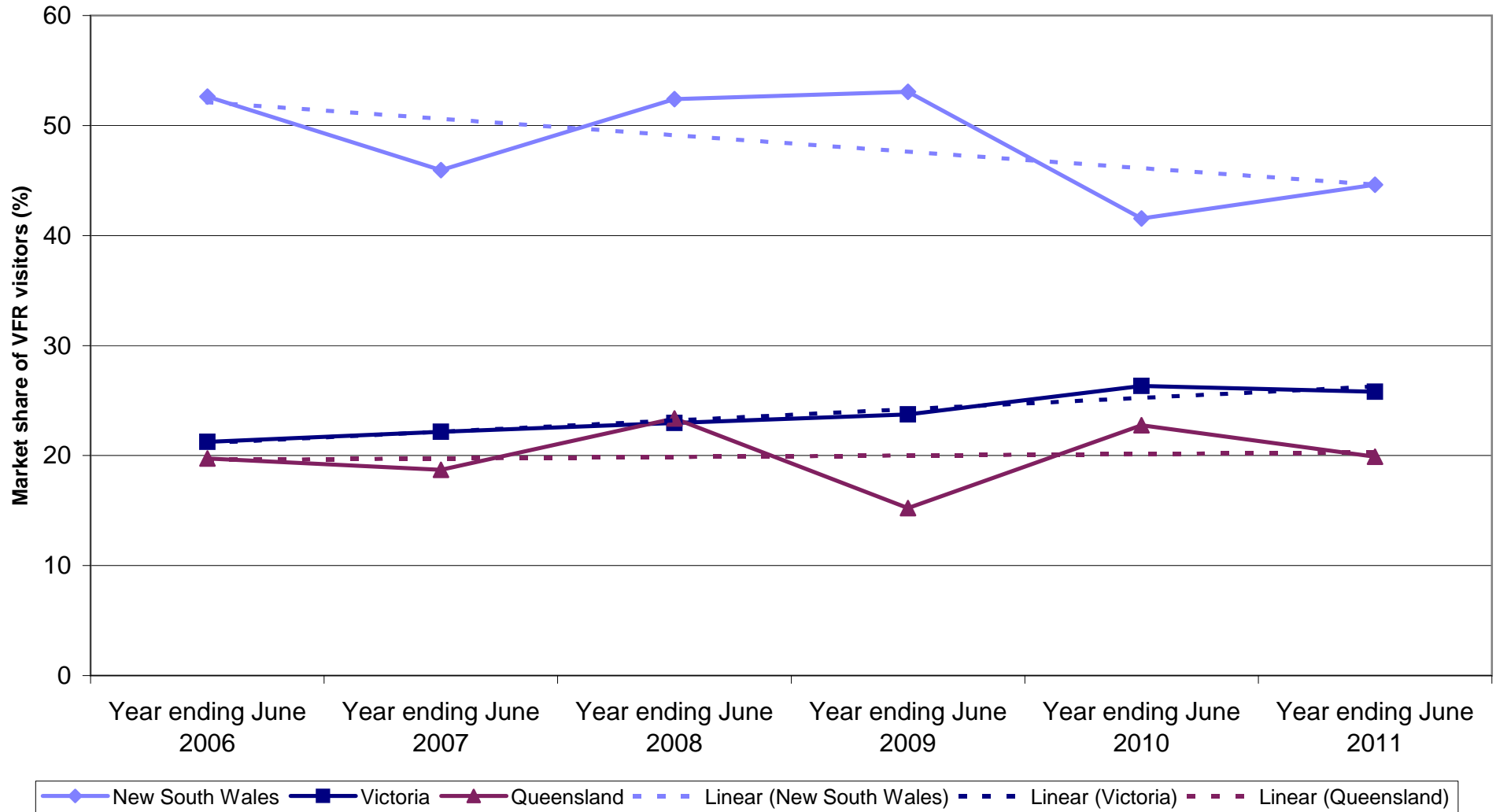


Legend: New South Wales (solid blue line with diamond), Victoria (solid dark blue line with square), Queensland (solid maroon line with triangle), Linear (New South Wales) (dashed blue line), Linear (Victoria) (dashed dark blue line), Linear (Queensland) (dashed maroon line)

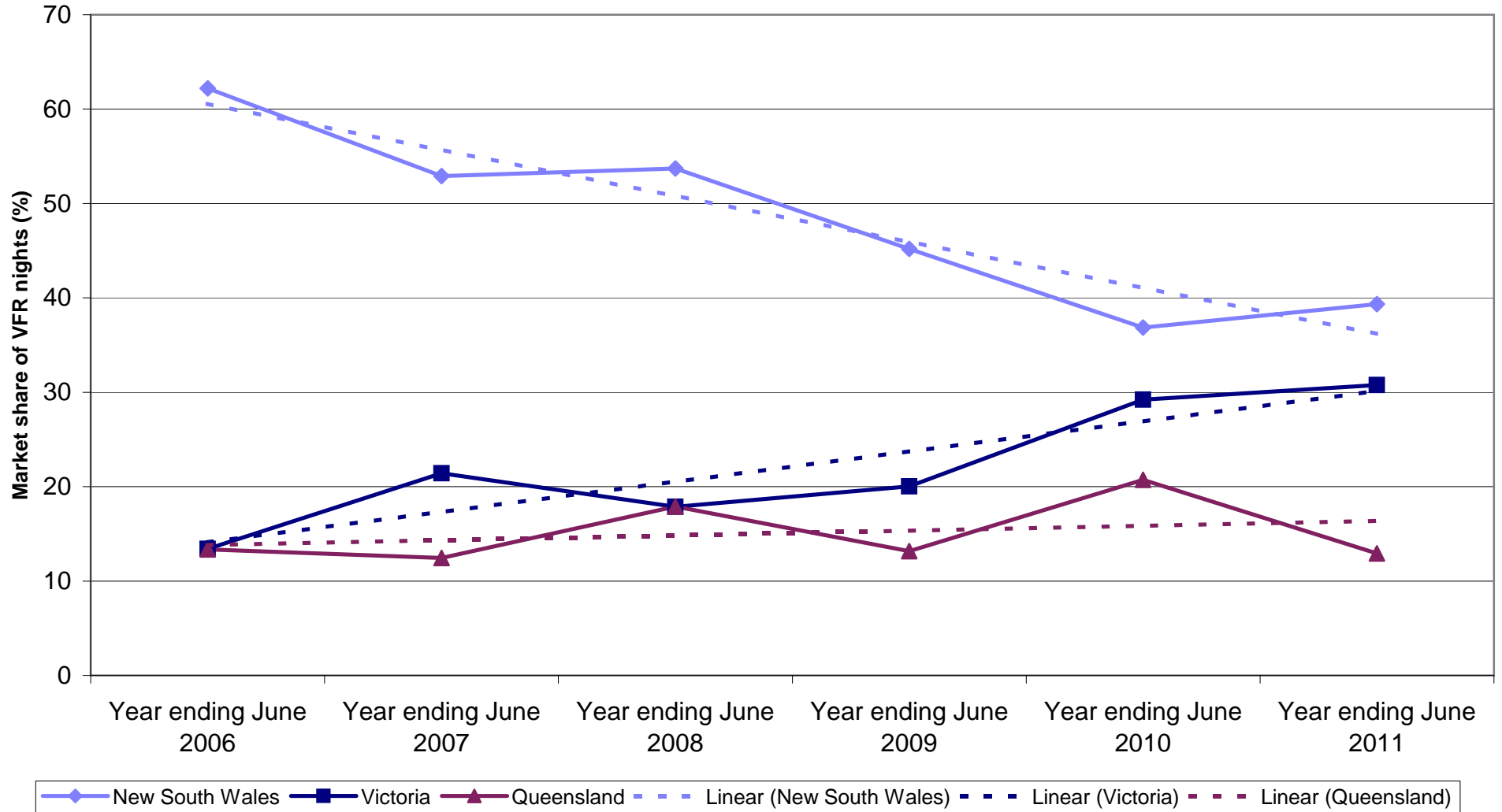
### Hong Kong VFR nights by State visited



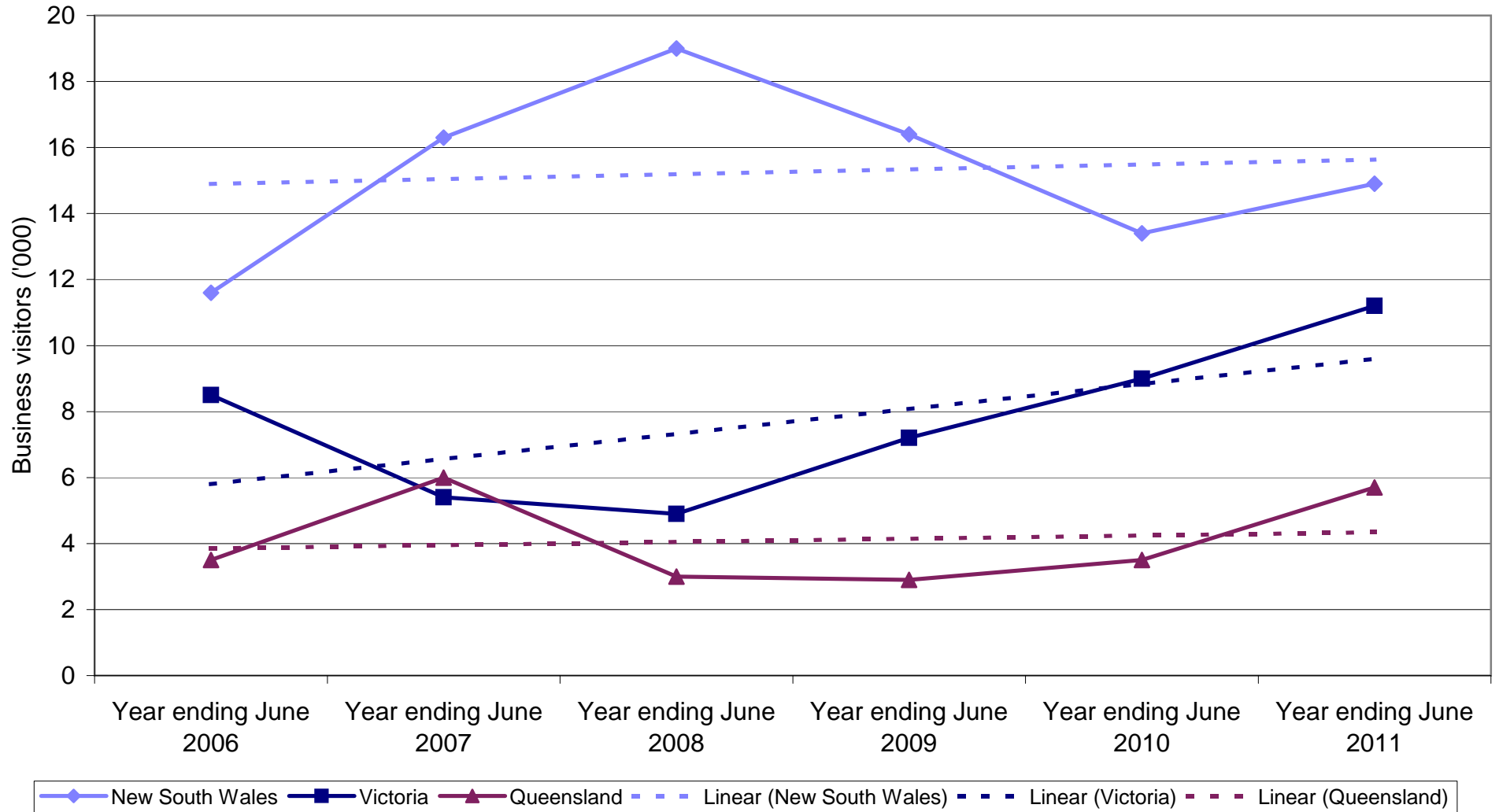
### State market share of Hong Kong VFR visitors to Australia



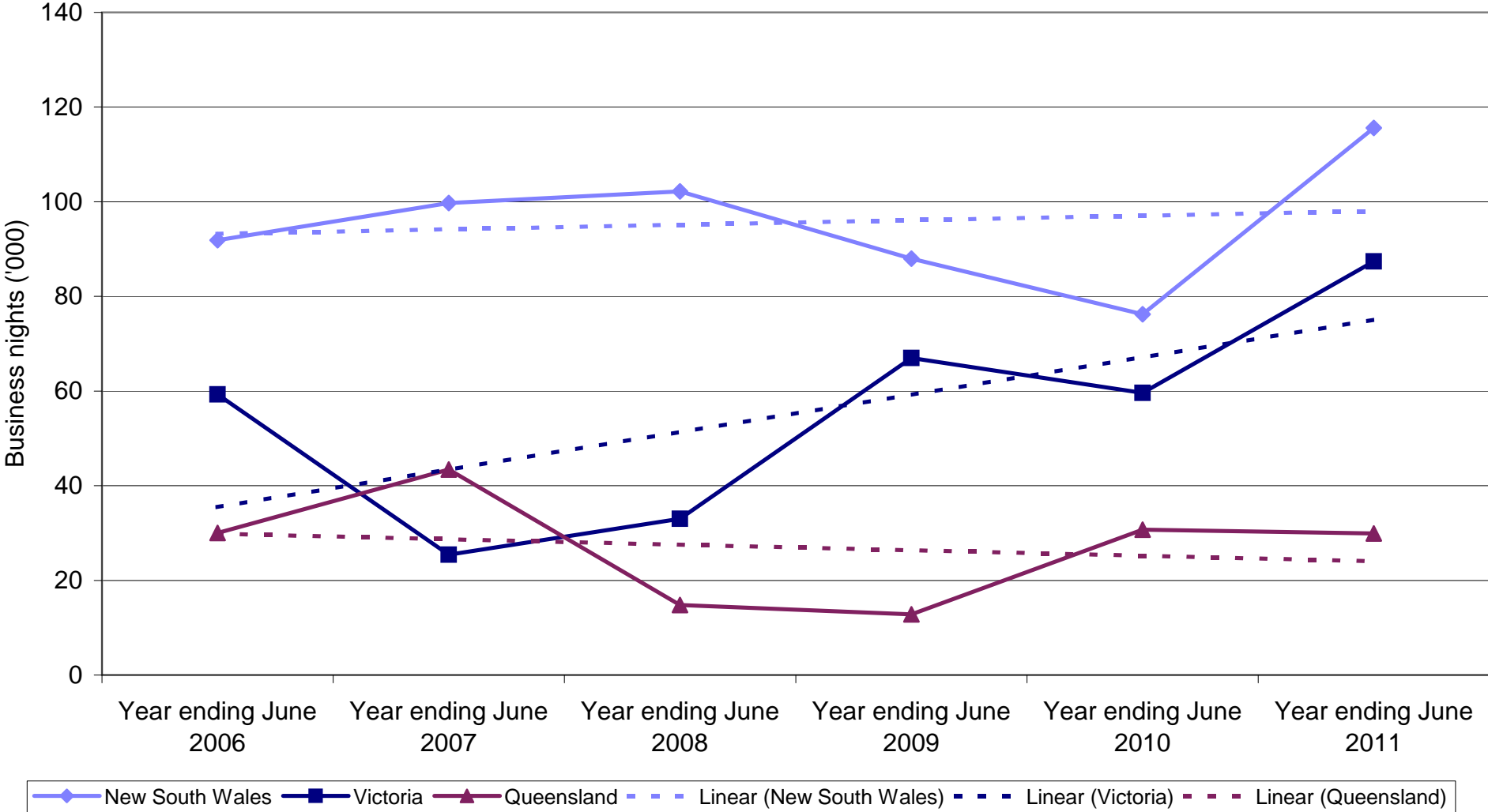
### State market share of Hong Kong VFR nights to Australia



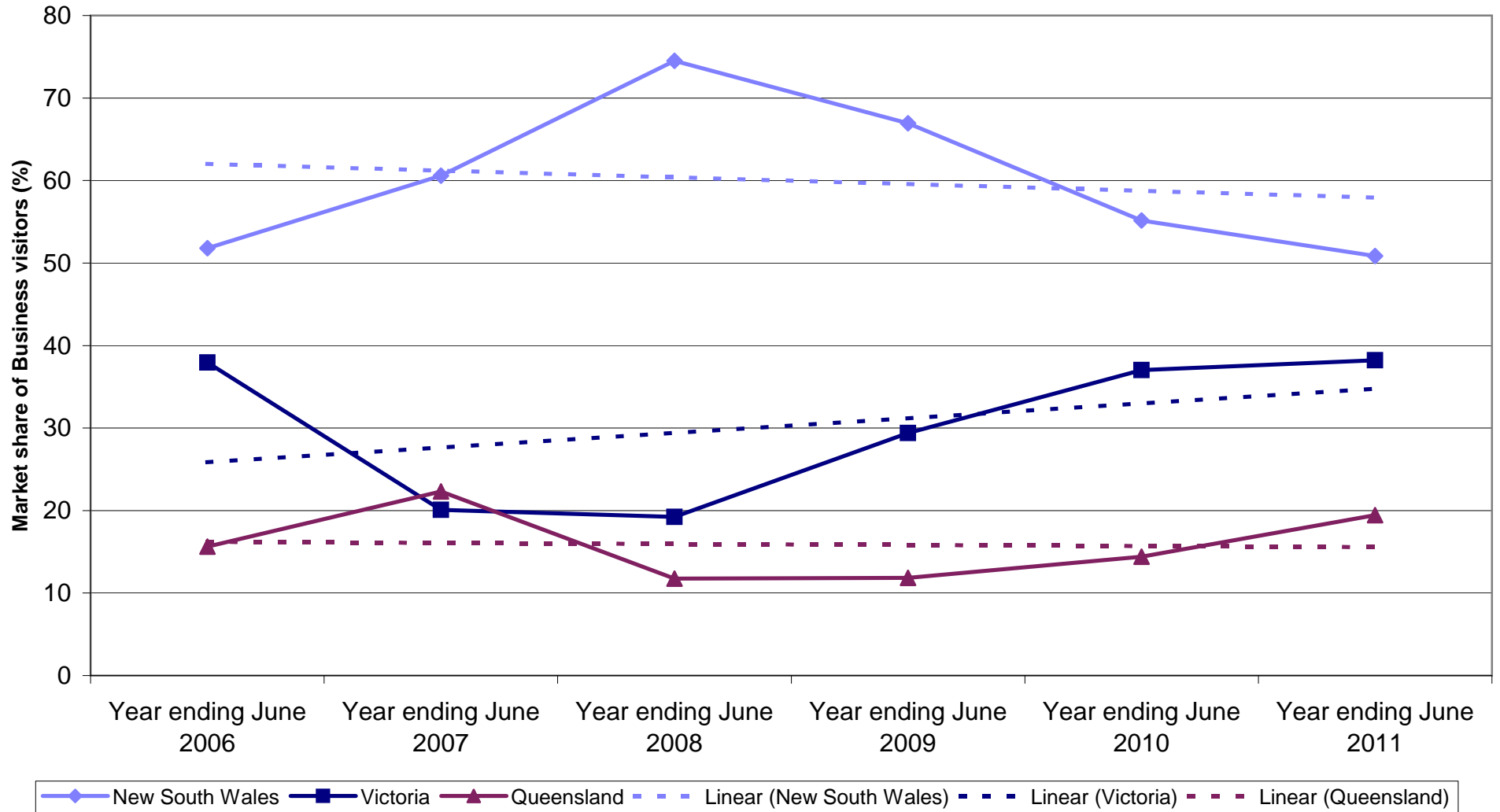
### Hong Kong Business visitors by State visited



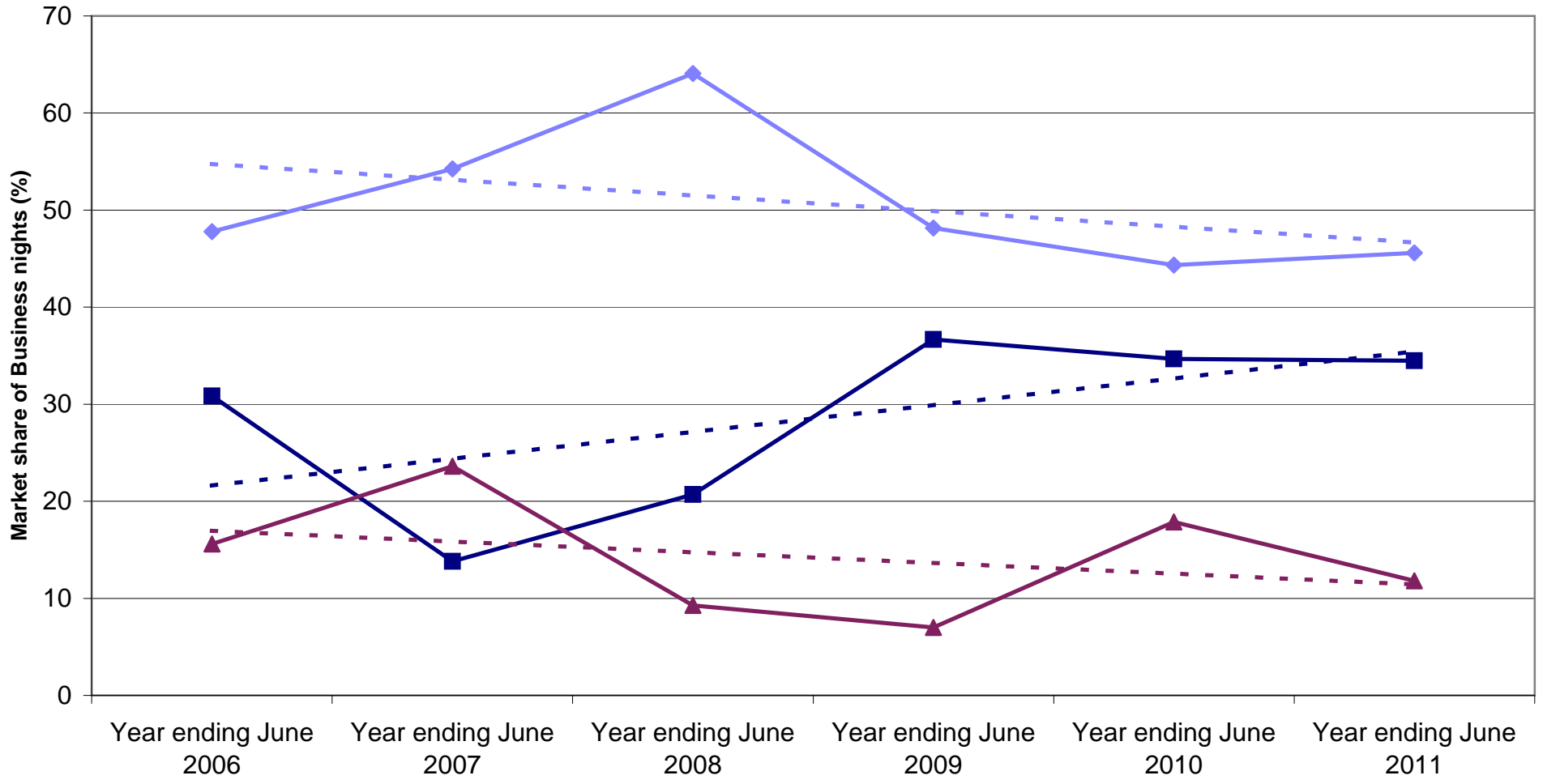
Hong Kong Business nights by State visited



### State market share of Hong Kong Business visitors to Australia

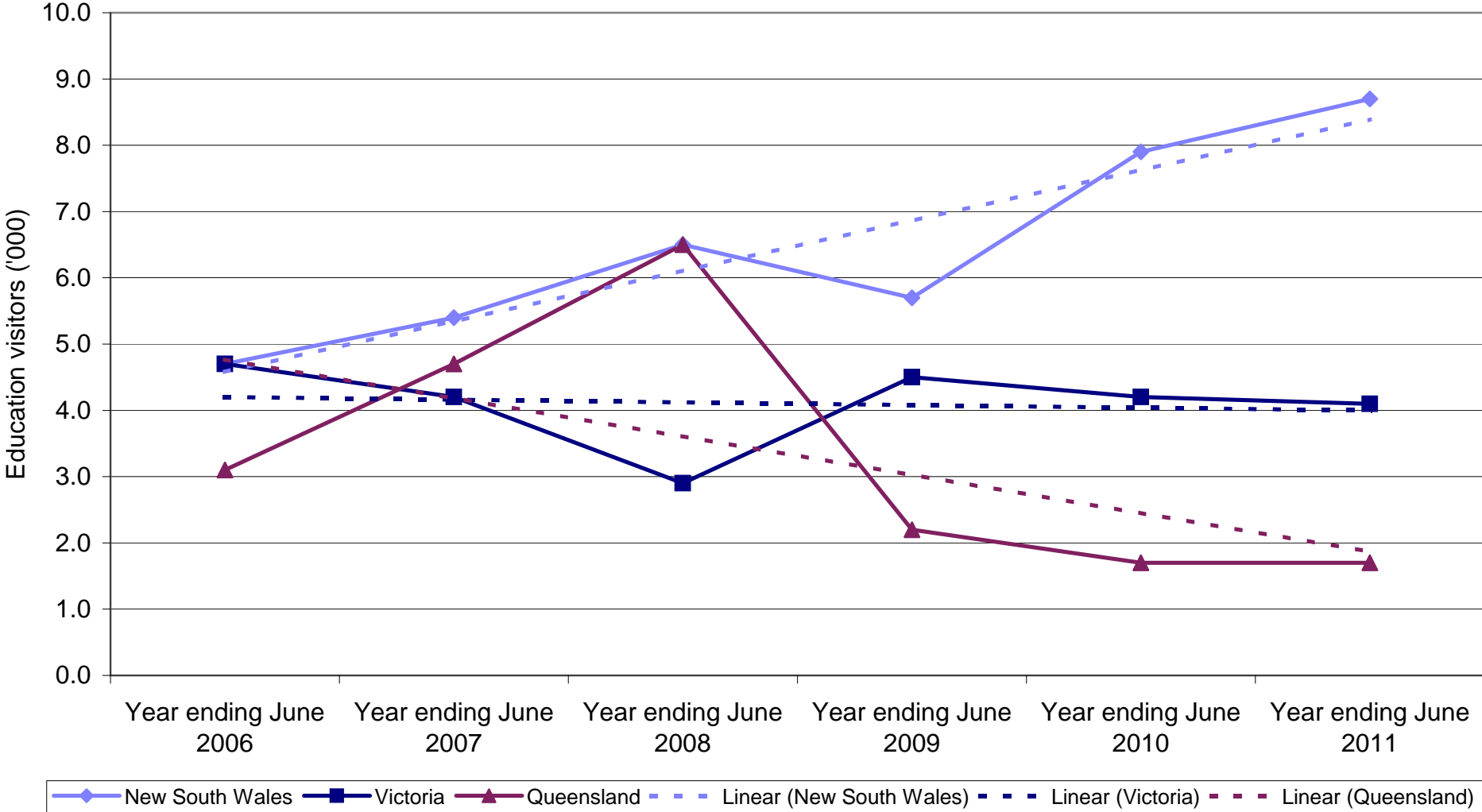


### State market share of Hong Kong Business nights to Australia

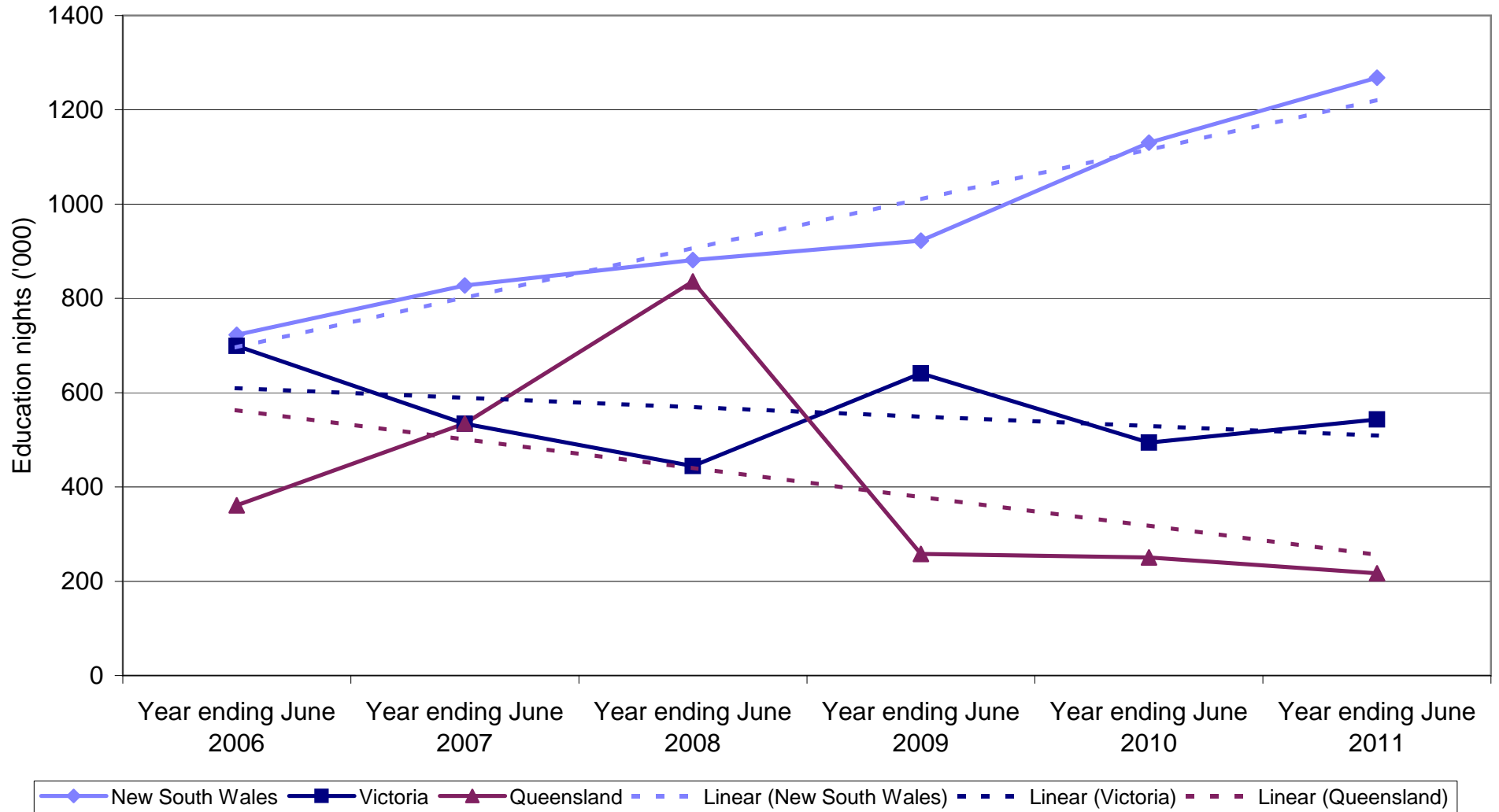


◆ New South Wales  
 ■ Victoria  
 ▲ Queensland  
 - - - Linear (New South Wales)  
 - - - Linear (Victoria)  
 - - - Linear (Queensland)

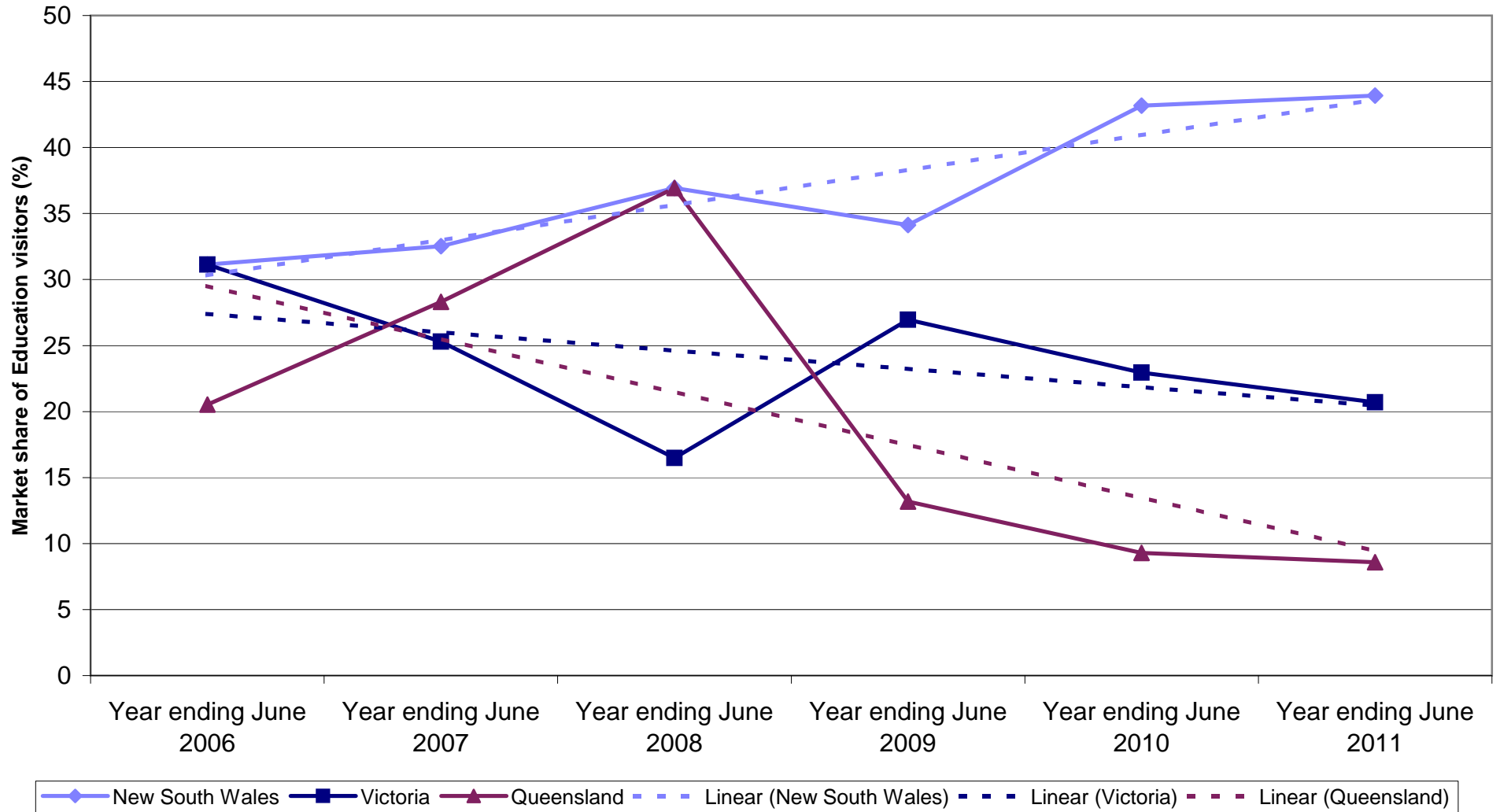
### Hong Kong Education visitors by State visited



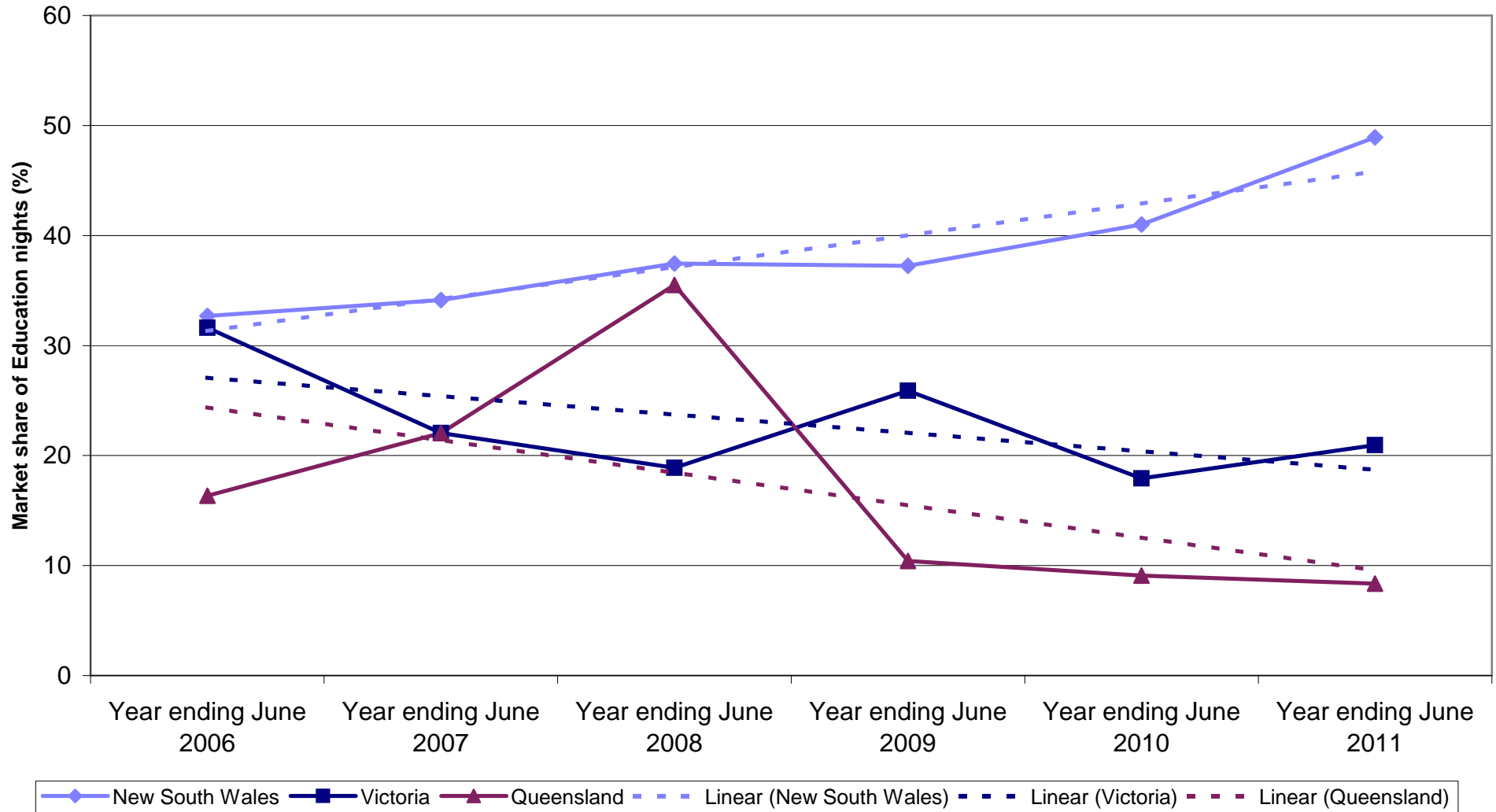
### Hong Kong Education nights by State visited



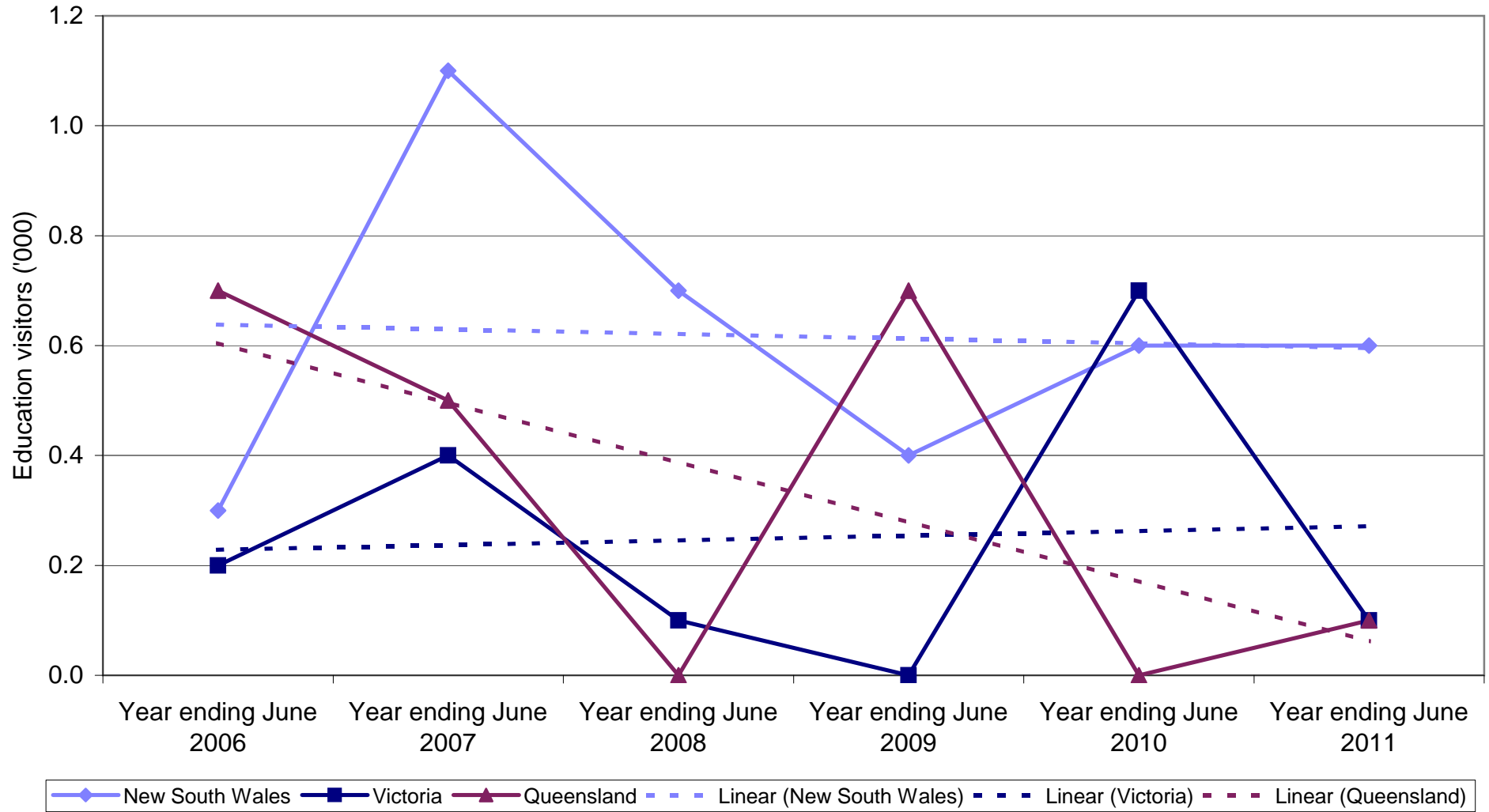
### State market share of Hong Kong Education visitors to Australia



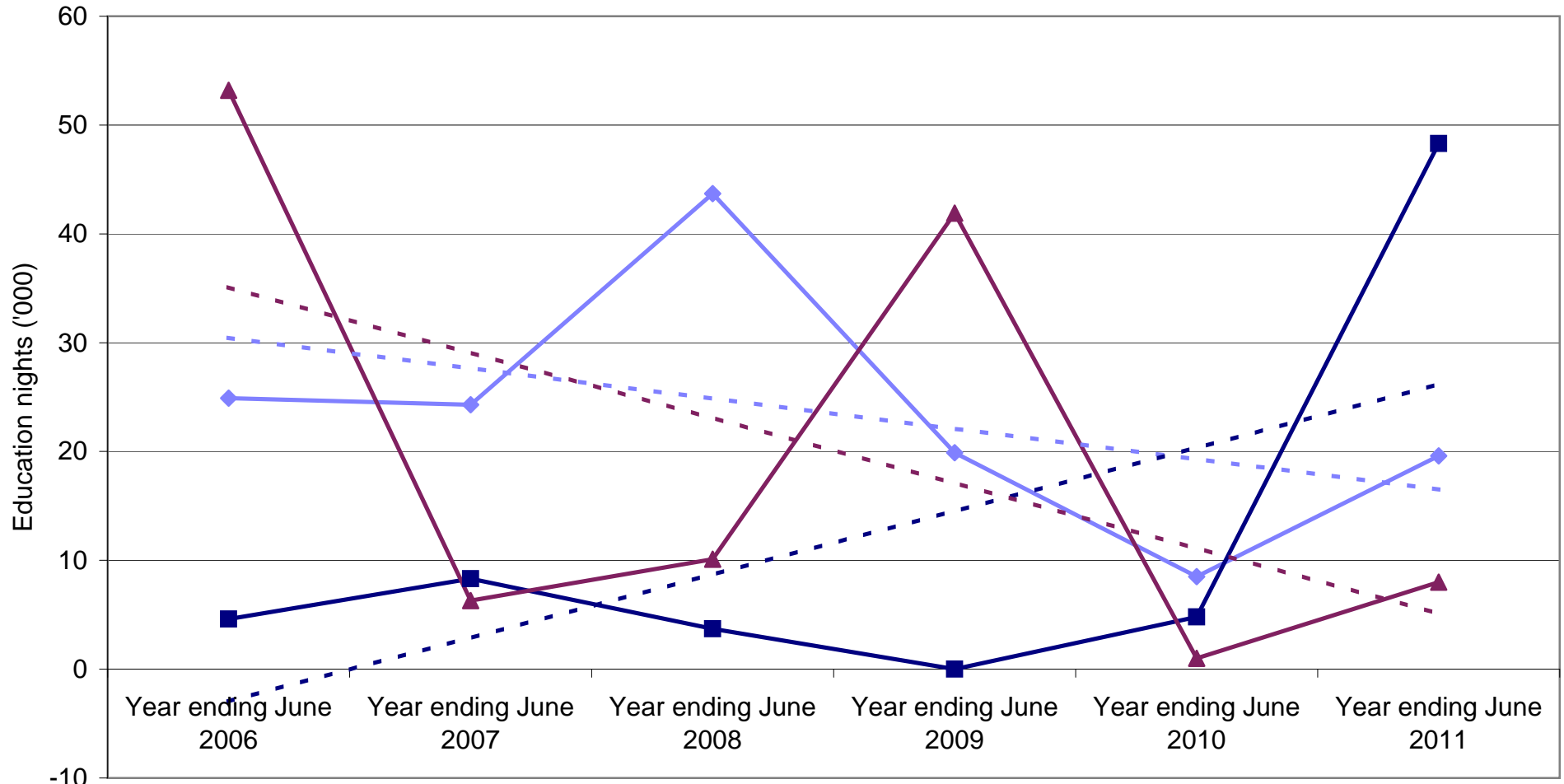
### State market share of Hong Kong Education nights to Australia



### Hong Kong Employment visitors by State visited

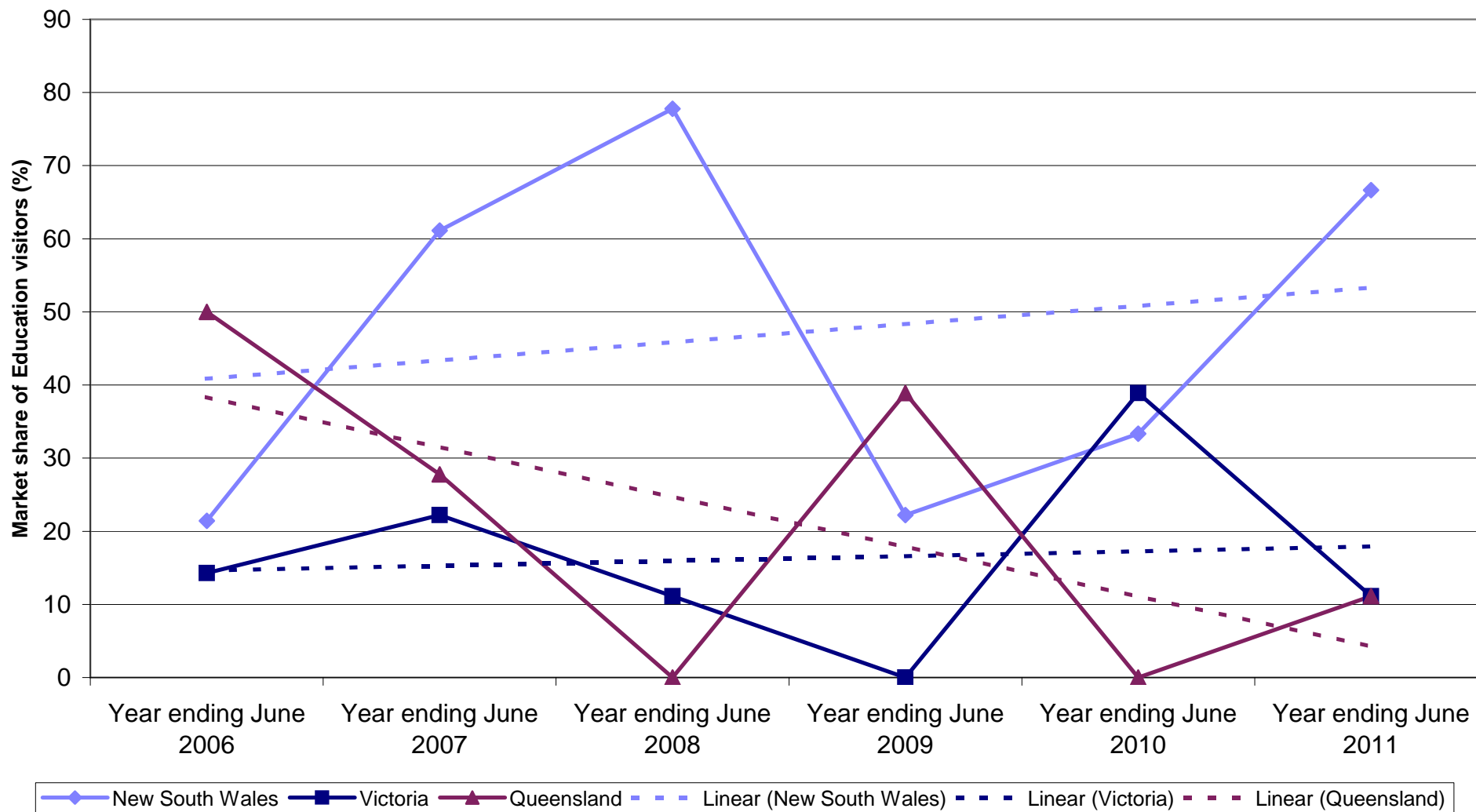


### Hong Kong Employment nights by State visited



◆ New South Wales 
 ■ Victoria 
 ▲ Queensland 
 - - - Linear (New South Wales) 
 - - - Linear (Victoria) 
 - - - Linear (Queensland)

### State market share of Hong Kong Employment visitors to Australia



### State market share of Hong Kong Employment nights to Australia

