



India - Times Series Year ending June 2006 - 2011

By stopover reason for visit

Holiday visitors ('000)	State visited	Year ending June 2006	Year ending June 2007	Year ending June 2008	Year ending June 2009	Year ending June 2010	Year ending June 2011
		New South Wales	13	18	22	16	16
	Victoria	7	9	12	13	9	16
	Queensland	14	15	20	15	14	14
	Total	22	29	35	29	32	37

Market share of holiday visitors (per cent)	State visited	Year ending June 2006	Year ending June 2007	Year ending June 2008	Year ending June 2009	Year ending June 2010	Year ending June 2011
		New South Wales	59.7	62.5	64.7	54.8	49.8
	Victoria	29.4	32.6	34.4	45.5	26.8	44.1
	Queensland	61.1	51.6	57.8	50.3	43.8	37.3

Holiday visitor nights ('000)	State visited	Year ending June 2006	Year ending June 2007	Year ending June 2008	Year ending June 2009	Year ending June 2010	Year ending June 2011
		New South Wales	76	128	164	101	206
	Victoria	36	35	136	106	134	93
	Queensland	71	78	131	89	82	103
	Total	207	300	548	333	504	529

Market share of holiday visitor nights (per cent)	State visited	Year ending June 2006	Year ending June 2007	Year ending June 2008	Year ending June 2009	Year ending June 2010	Year ending June 2011
		New South Wales	36.7	42.5	29.9	30.2	40.9
	Victoria	17.5	11.8	24.8	31.9	26.7	17.6
	Queensland	34.3	26.0	23.9	26.7	16.3	19.5

VFR visitors ('000)	State visited	Year ending June 2006	Year ending June 2007	Year ending June 2008	Year ending June 2009	Year ending June 2010	Year ending June 2011
		New South Wales	10	13	13	17	24
	Victoria	8	10	9	17	23	28
	Queensland	4	4	5	5	7	5
	Total	22	26	30	40	55	61

Market share of VFR visitors (per cent)	State visited	Year ending June 2006	Year ending June 2007	Year ending June 2008	Year ending June 2009	Year ending June 2010	Year ending June 2011
		New South Wales	44.0	47.3	43.2	43.8	42.7
	Victoria	36.7	36.4	29.1	42.0	41.3	45.0
	Queensland	16.1	13.6	16.6	11.6	12.7	8.0

VFR visitor nights ('000)	State visited	Year ending June 2006	Year ending June 2007	Year ending June 2008	Year ending June 2009	Year ending June 2010	Year ending June 2011
		New South Wales	336	576	479	720	711
	Victoria	364	382	326	701	929	1,373
	Queensland	86	173	252	190	274	178
	Total	903	1,279	1,449	1,824	2,198	3,246

Market share of VFR visitor nights (per cent)	State visited	Year ending June 2006	Year ending June 2007	Year ending June 2008	Year ending June 2009	Year ending June 2010	Year ending June 2011
		New South Wales	37.2	45.0	33.1	39.5	32.4
	Victoria	40.3	29.9	22.5	38.4	42.3	42.3
	Queensland	9.5	13.5	17.4	10.4	12.5	5.5

Source: International Visitor Survey.

Base: All visitors aged 15 years and over travel grid completed.

India - Times Series Year ending June 2006 - 2011

Business visitors ('000)	State visited	Year ending June	Year ending June	Year ending June	Year ending June	Year ending June	Year ending June
		2006	2007	2008	2009	2010	2011
	New South Wales	11	12	13	12	12	15
	Victoria	6	8	9	9	10	10
	Queensland	4	6	5	4	3	5
	Total	21	24	27	26	27	30

Market share of business visitors (per cent)	State visited	Year ending June	Year ending June	Year ending June	Year ending June	Year ending June	Year ending June
		2006	2007	2008	2009	2010	2011
	New South Wales	52.7	50.4	47.3	47.9	43.9	49.3
	Victoria	29.8	33.1	34.4	34.4	35.4	34.8
	Queensland	21.0	22.7	18.7	17.0	11.1	18.2

Business visitor nights ('000)	State visited	Year ending June	Year ending June	Year ending June	Year ending June	Year ending June	Year ending June
		2006	2007	2008	2009	2010	2011
	New South Wales	181	267	394	229	213	329
	Victoria	153	288	171	428	216	282
	Queensland	61	67	81	93	41	101
	Total	452	695	721	816	581	836

Market share of business visitor nights (per cent)	State visited	Year ending June	Year ending June	Year ending June	Year ending June	Year ending June	Year ending June
		2006	2007	2008	2009	2010	2011
	New South Wales	40.0	38.5	54.6	28.1	36.7	39.3
	Victoria	33.8	41.5	23.8	52.4	37.2	33.7
	Queensland	13.4	9.7	11.2	11.4	7.0	12.1

Education visitors ('000)	State visited	Year ending June	Year ending June	Year ending June	Year ending June	Year ending June	Year ending June
		2006	2007	2008	2009	2010	2011
	New South Wales	3.2	4.6	4.7	5.0	4.7	4.8
	Victoria	4.3	3.7	6.8	8.6	9.8	8.4
	Queensland	0.9	1.2	1.4	4.3	2.1	2.6
	Total	9.4	10.4	14.1	20.2	19.6	18.9

Market share of Education visitors (per cent)	State visited	Year ending June	Year ending June	Year ending June	Year ending June	Year ending June	Year ending June
		2006	2007	2008	2009	2010	2011
	New South Wales	34.0	44.2	33.3	24.8	24.0	25.4
	Victoria	45.7	35.6	48.2	42.6	50.0	44.4
	Queensland	9.6	11.5	9.9	21.3	10.7	13.8

Education visitor nights ('000)	State visited	Year ending June	Year ending June	Year ending June	Year ending June	Year ending June	Year ending June
		2006	2007	2008	2009	2010	2011
	New South Wales	618	694	781	686	597	732
	Victoria	554	408	1,005	1,358	1,789	1,537
	Queensland	63	93	172	554	458	379
	Total	1,418	1,364	2,100	2,969	3,220	3,073

Market share of Education visitor nights (per cent)	State visited	Year ending June	Year ending June	Year ending June	Year ending June	Year ending June	Year ending June
		2006	2007	2008	2009	2010	2011
	New South Wales	43.6	50.9	37.2	23.1	18.5	23.8
	Victoria	39.1	29.9	47.9	45.7	55.6	50.0
	Queensland	4.4	6.8	8.2	18.7	14.2	12.3

Employment visitors ('000)	State visited	Year ending June	Year ending June	Year ending June	Year ending June	Year ending June	Year ending June
		2006	2007	2008	2009	2010	2011
	New South Wales	2.3	2.1	4.2	3.7	3.4	4.3
	Victoria	1.6	2.5	1.0	3.0	2.5	4.1
	Queensland	0.2	0.6	1.9	1.7	0.4	0.5
	Total	4.6	6.2	7.9	8.4	8.3	11.1

Market share of Employment visitors (per cent)	State visited	Year ending June	Year ending June	Year ending June	Year ending June	Year ending June	Year ending June
		2006	2007	2008	2009	2010	2011
	New South Wales	50.0	33.9	53.2	44.0	41.0	38.7
	Victoria	34.8	40.3	12.7	35.7	30.1	36.9
	Queensland	4.3	9.7	24.1	20.2	4.8	4.5

India - Times Series Year ending June 2006 - 2011

Employment visitor nights (’000)	State visited	Year ending June	Year ending June	Year ending June	Year ending June	Year ending June	Year ending June
		2006	2007	2008	2009	2010	2011
	New South Wales	191	222	411	605	392	672
	Victoria	219	334	236	323	320	480
	Queensland	4	51	265	172	93	42
	Total	468	753	1,013	1,182	993	1,526

Market share of Employment visitor nights (per cent)	State visited	Year ending June	Year ending June	Year ending June	Year ending June	Year ending June	Year ending June
		2006	2007	2008	2009	2010	2011
	New South Wales	40.8	29.5	40.6	51.2	39.5	44.0
	Victoria	46.8	44.3	23.3	27.3	32.2	31.5
	Queensland	0.9	6.8	26.1	14.5	9.3	2.8

Total visitors (’000)	State visited	Year ending June	Year ending June	Year ending June	Year ending June	Year ending June	Year ending June
		2006	2007	2008	2009	2010	2011
	New South Wales	40.7	48.9	55.6	55.3	58.6	68.6
	Victoria	26.5	30.9	35.6	47.2	50.2	62.5
	Queensland	22.2	24.6	31.5	29.7	23.3	25.1
	Total	73.6	82.6	100.9	113.4	122.5	135.8

Market share of total visitors (per cent)	State visited	Year ending June	Year ending June	Year ending June	Year ending June	Year ending June	Year ending June
		2006	2007	2008	2009	2010	2011
	New South Wales	55.3	59.2	55.1	48.8	47.8	50.5
	Victoria	36.0	37.4	35.3	41.6	41.0	46.0
	Queensland	30.2	29.8	31.2	26.2	19.0	18.5

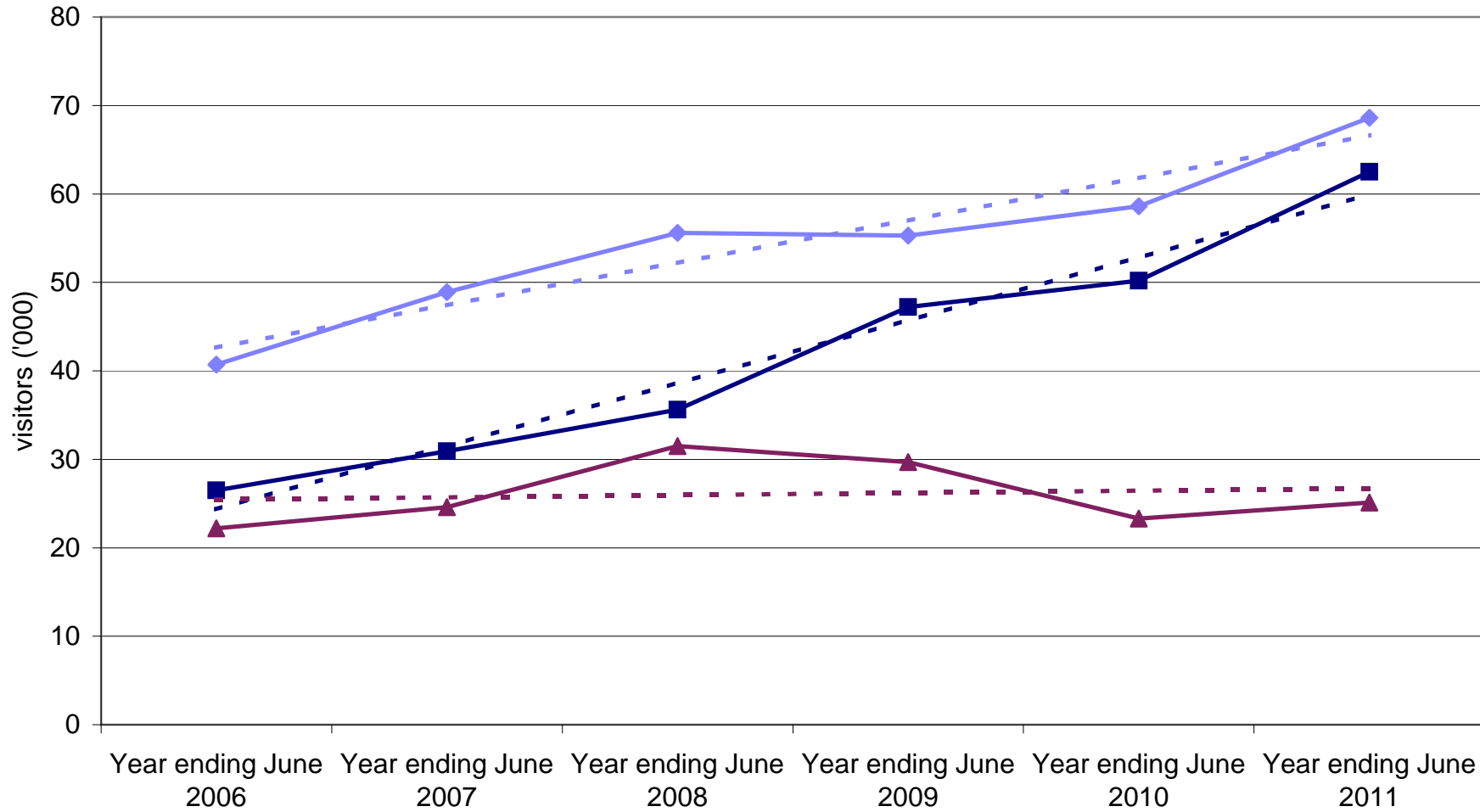
Total visitor nights (’000)	State visited	Year ending June	Year ending June	Year ending June	Year ending June	Year ending June	Year ending June
		2006	2007	2008	2009	2010	2011
	New South Wales	1,412	1,890	2,232	2,344	2,120	3,275
	Victoria	1,333	1,452	1,877	2,919	3,389	3,770
	Queensland	287	463	901	1,100	948	804
	Total	3,501	4,417	5,842	7,137	7,505	9,228

Market share of total visitor nights (per cent)	State visited	Year ending June	Year ending June	Year ending June	Year ending June	Year ending June	Year ending June
		2006	2007	2008	2009	2010	2011
	New South Wales	40.3	42.8	38.2	32.8	28.3	35.5
	Victoria	38.1	32.9	32.1	40.9	45.2	40.9
	Queensland	8.2	10.5	15.4	15.4	12.6	8.7

Source: International Visitor Survey.

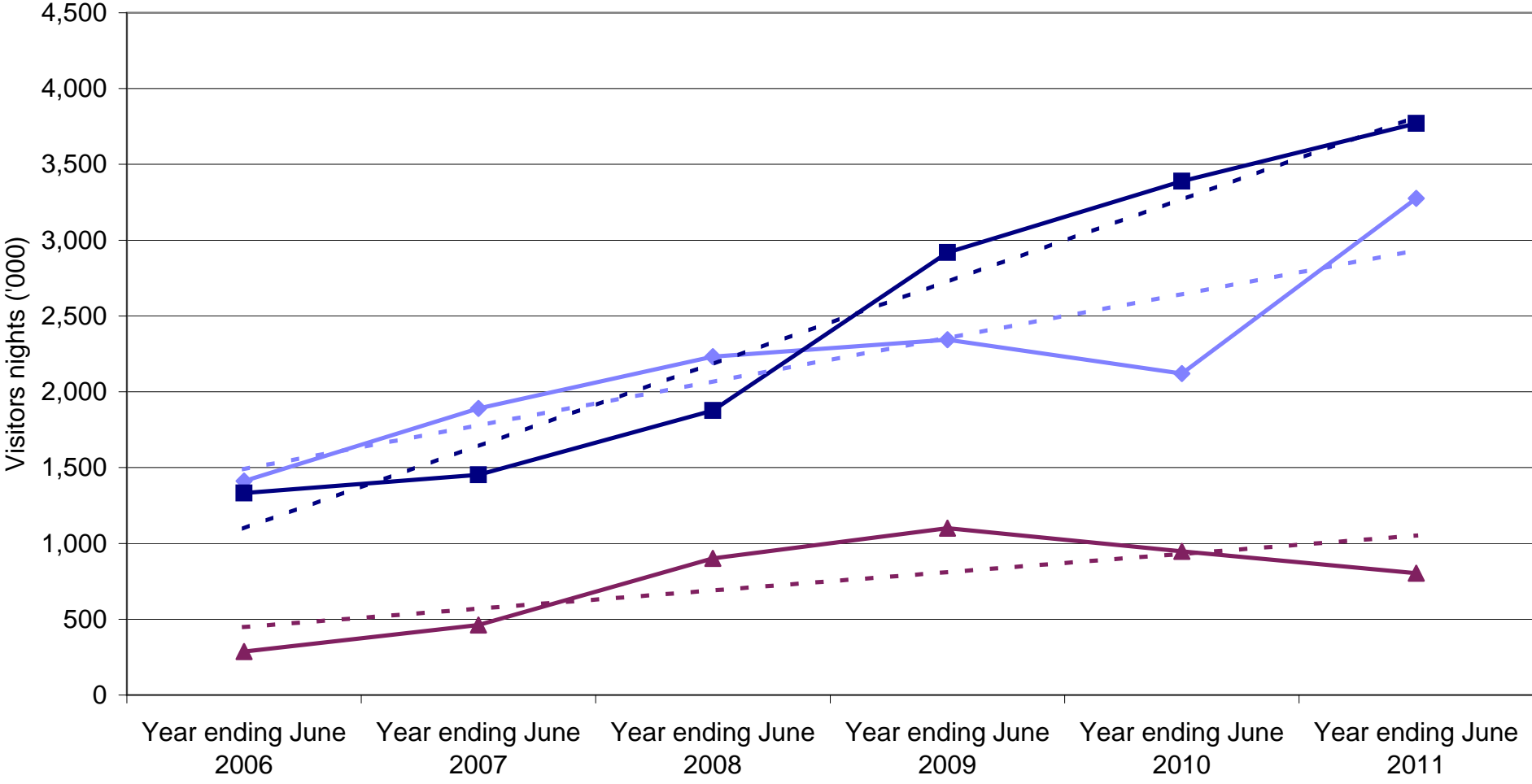
Base: All visitors aged 15 years and over travel grid completed.

Indian visitors by State visited



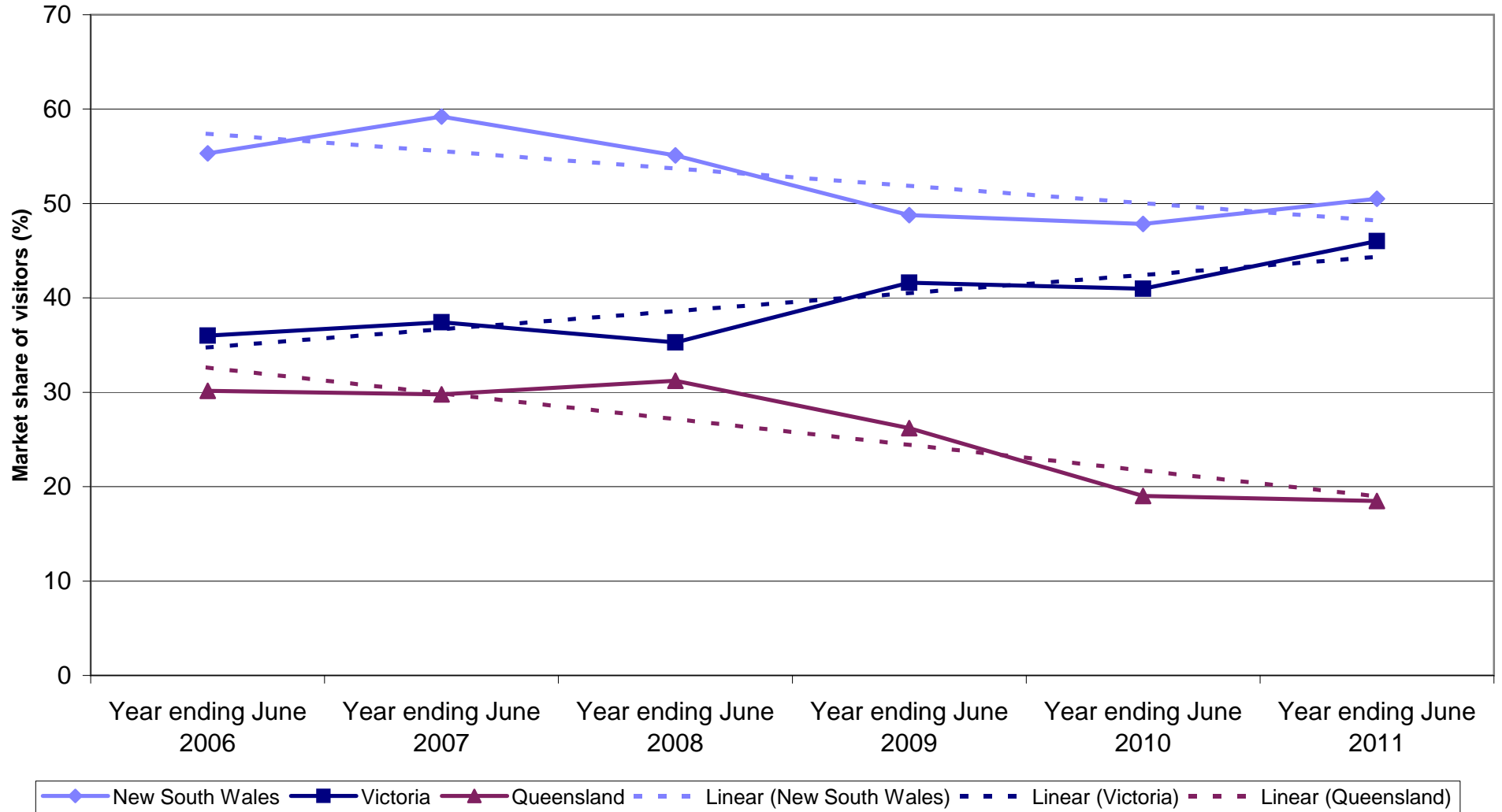
Legend: New South Wales (solid blue line with diamond markers), Victoria (solid dark blue line with square markers), Queensland (solid maroon line with triangle markers), Linear (New South Wales) (dashed light blue line), Linear (Victoria) (dashed dark blue line), Linear (Queensland) (dashed maroon line).

Indian nights by State visited

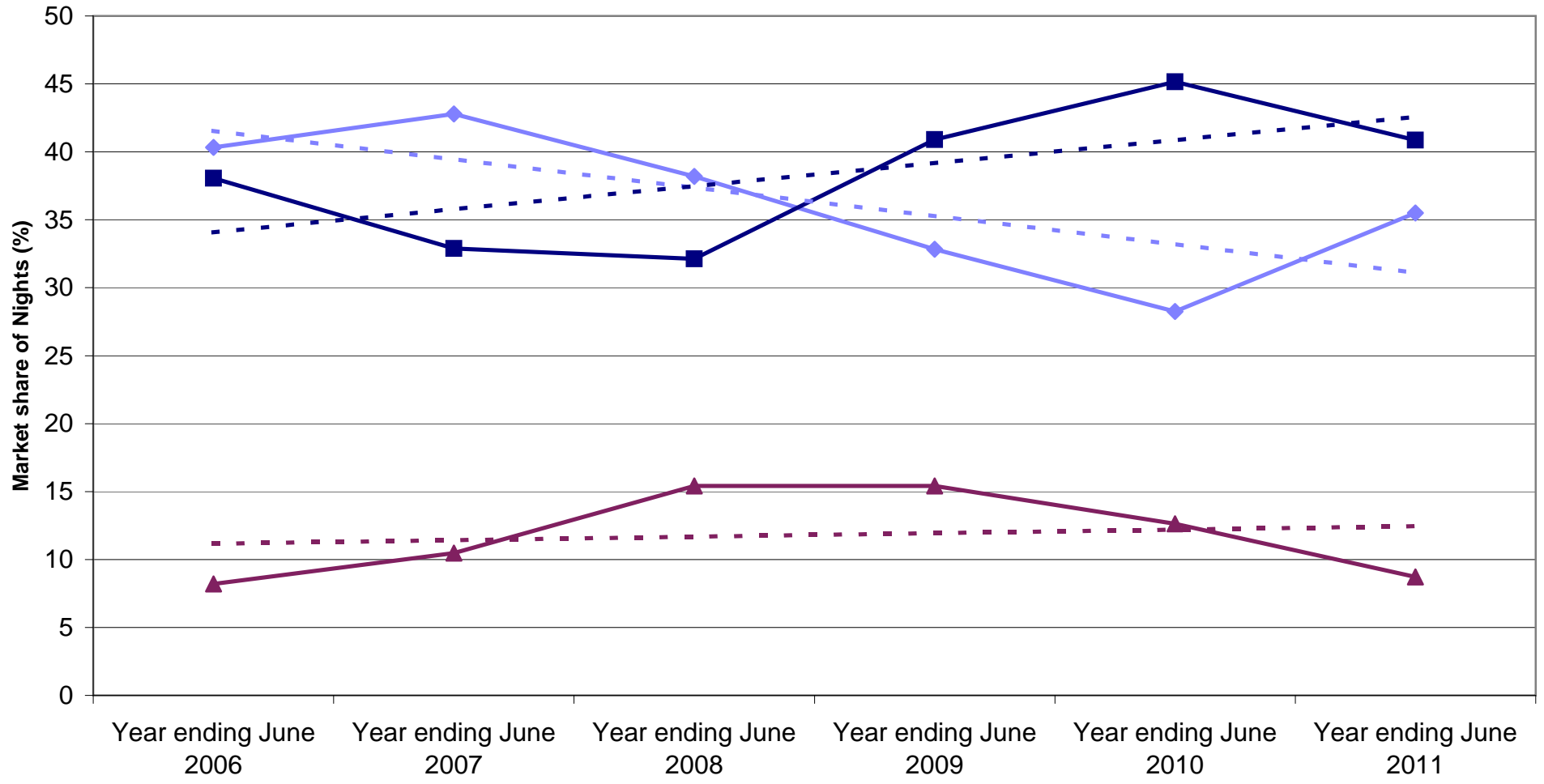


◆ New South Wales
 ■ Victoria
 ▲ Queensland
 - - - Linear (New South Wales)
 - - - Linear (Victoria)
 - - - Linear (Queensland)

State market share of Indian visitors to Australia

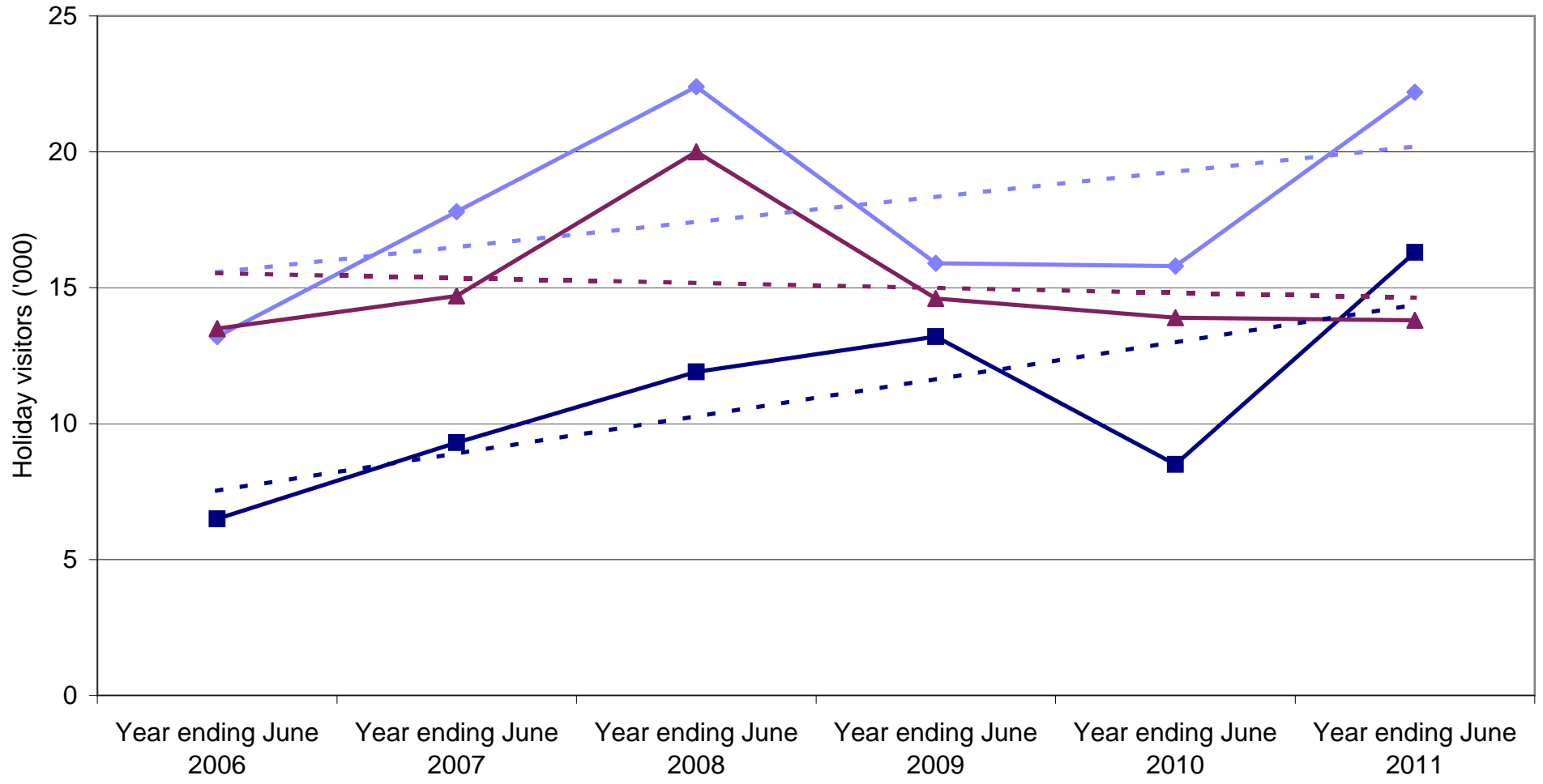


State market share of Indian nights to Australia



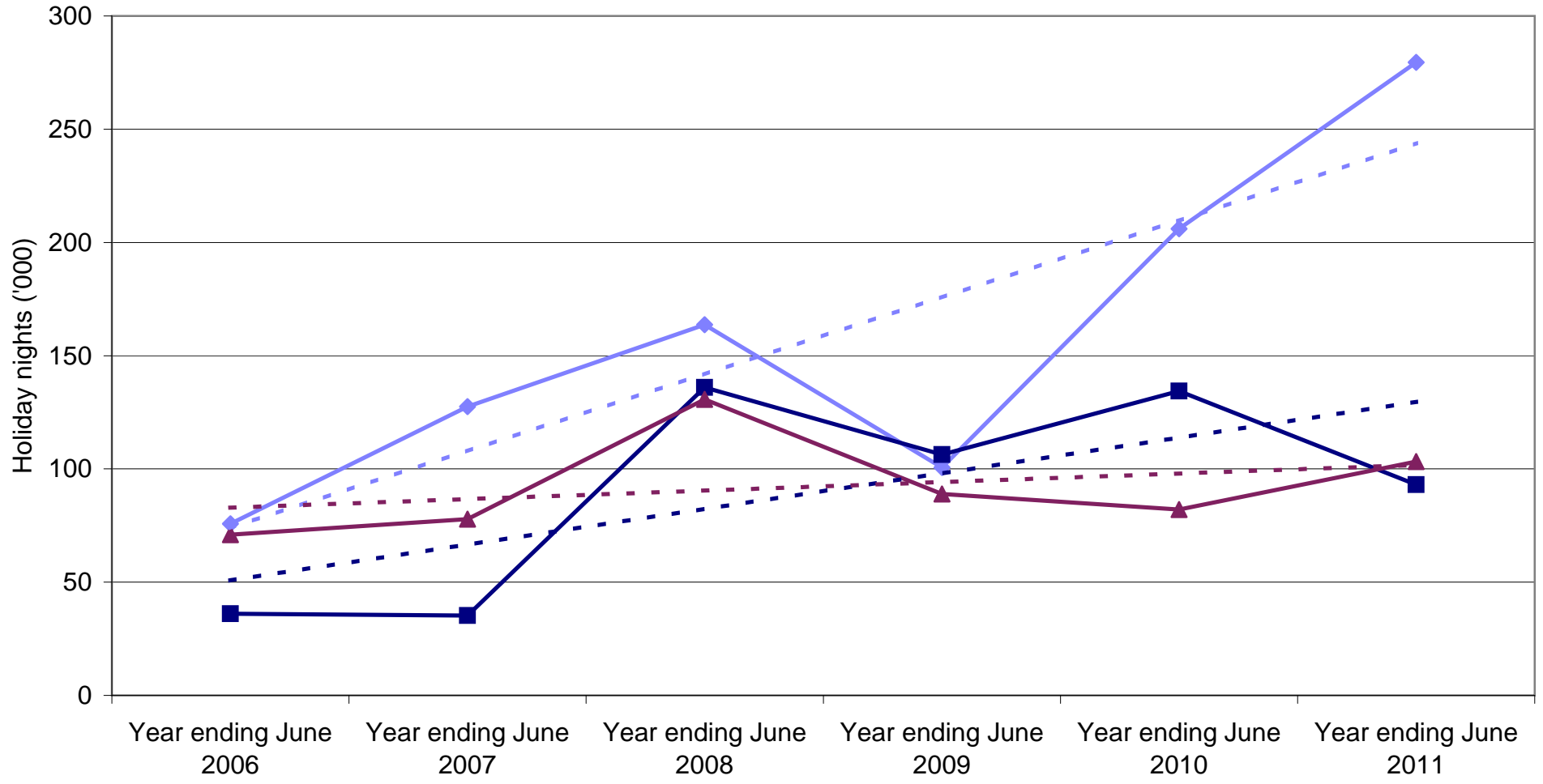
◆ New South Wales
 ■ Victoria
 ▲ Queensland
 - - - Linear (New South Wales)
 - - - Linear (Victoria)
 - - - Linear (Queensland)

Indian holiday visitors by State visited



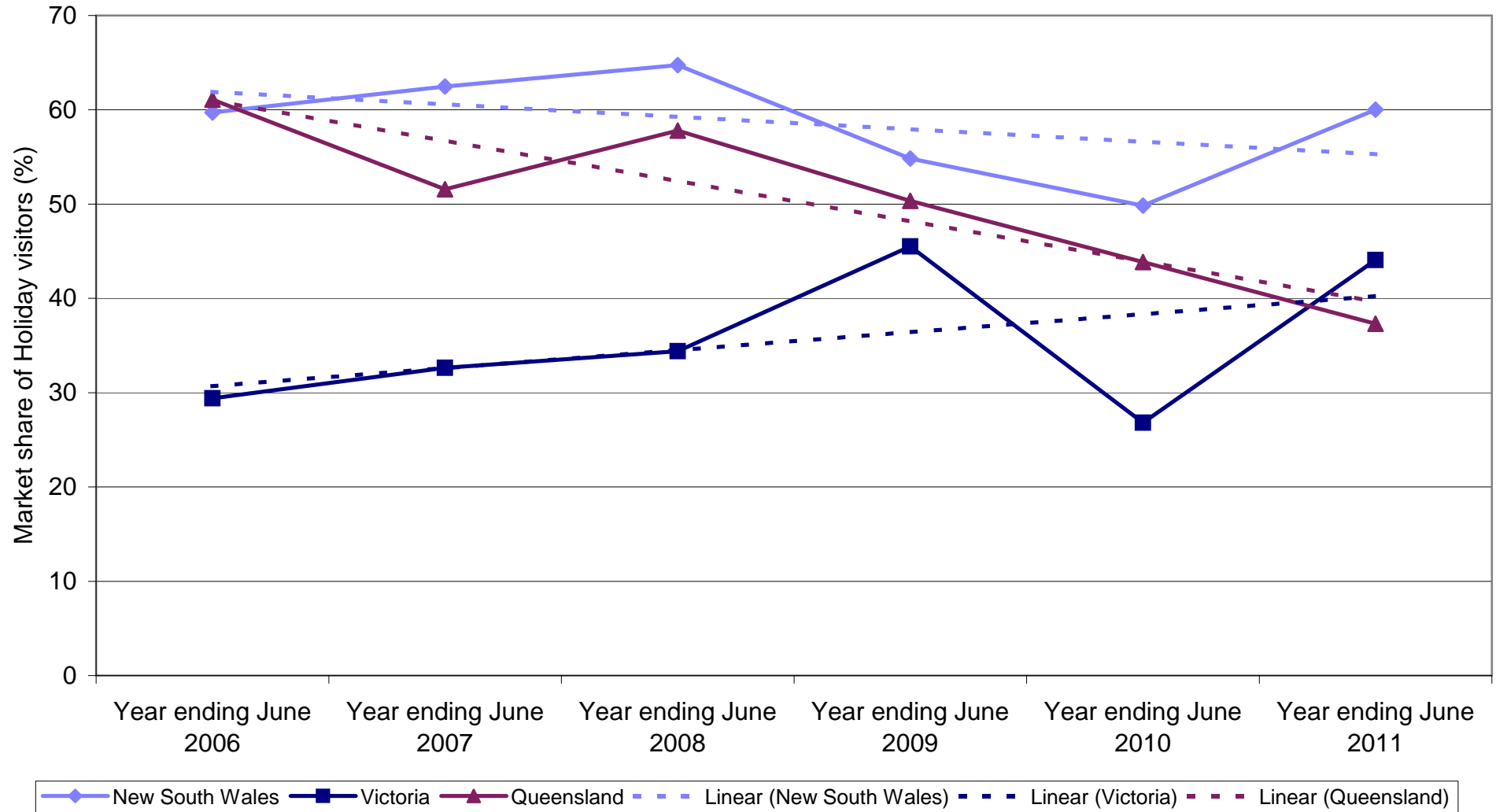
Legend: New South Wales (solid blue line with diamond markers), Victoria (solid dark blue line with square markers), Queensland (solid maroon line with triangle markers), Linear (New South Wales) (dashed light blue line), Linear (Victoria) (dashed dark blue line), Linear (Queensland) (dashed maroon line).

Indian holiday nights by State visited

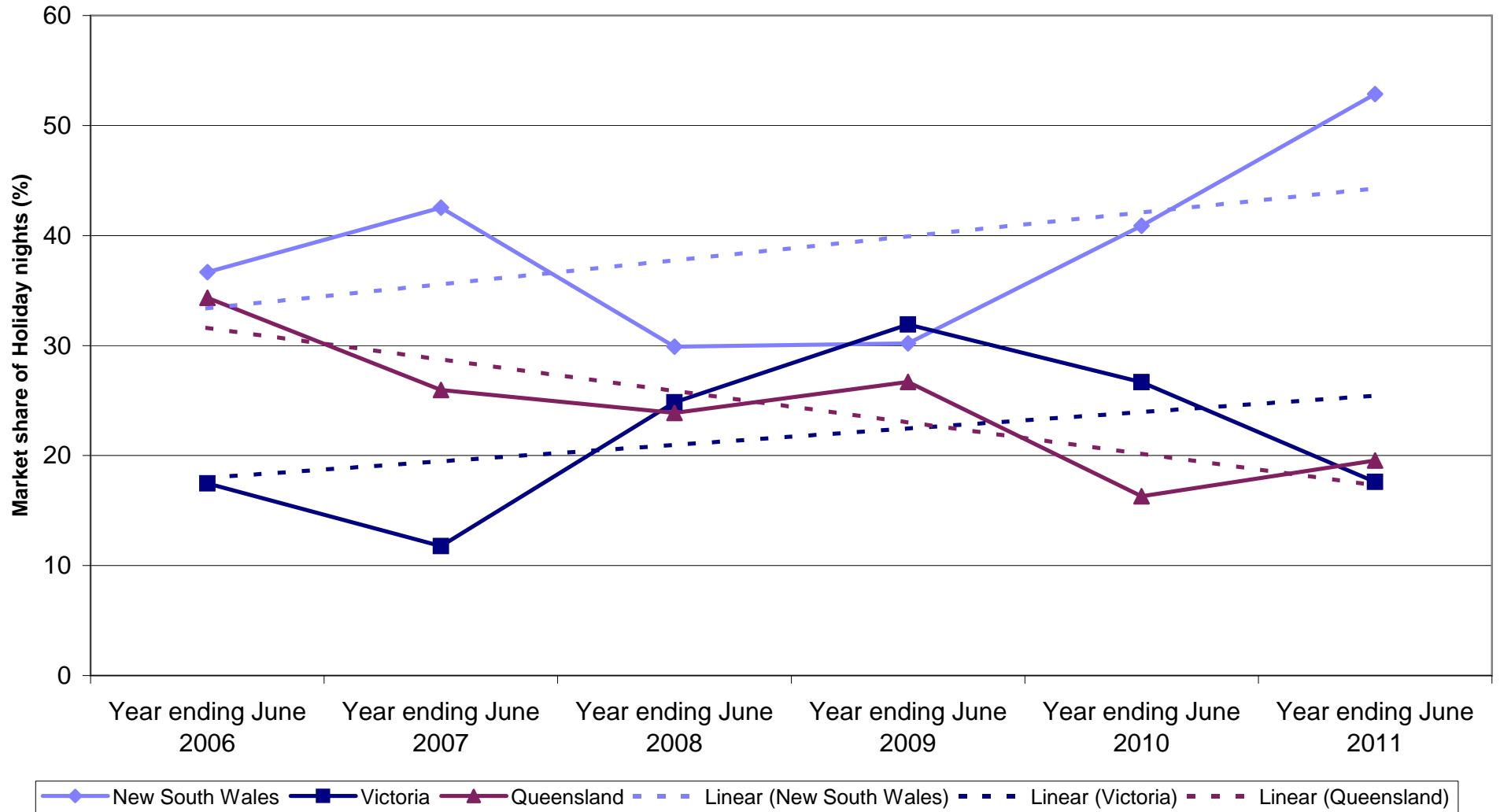


Legend: New South Wales (solid blue line with diamond markers), Victoria (solid dark blue line with square markers), Queensland (solid maroon line with triangle markers), Linear (New South Wales) (dashed light blue line), Linear (Victoria) (dashed dark blue line), Linear (Queensland) (dashed maroon line).

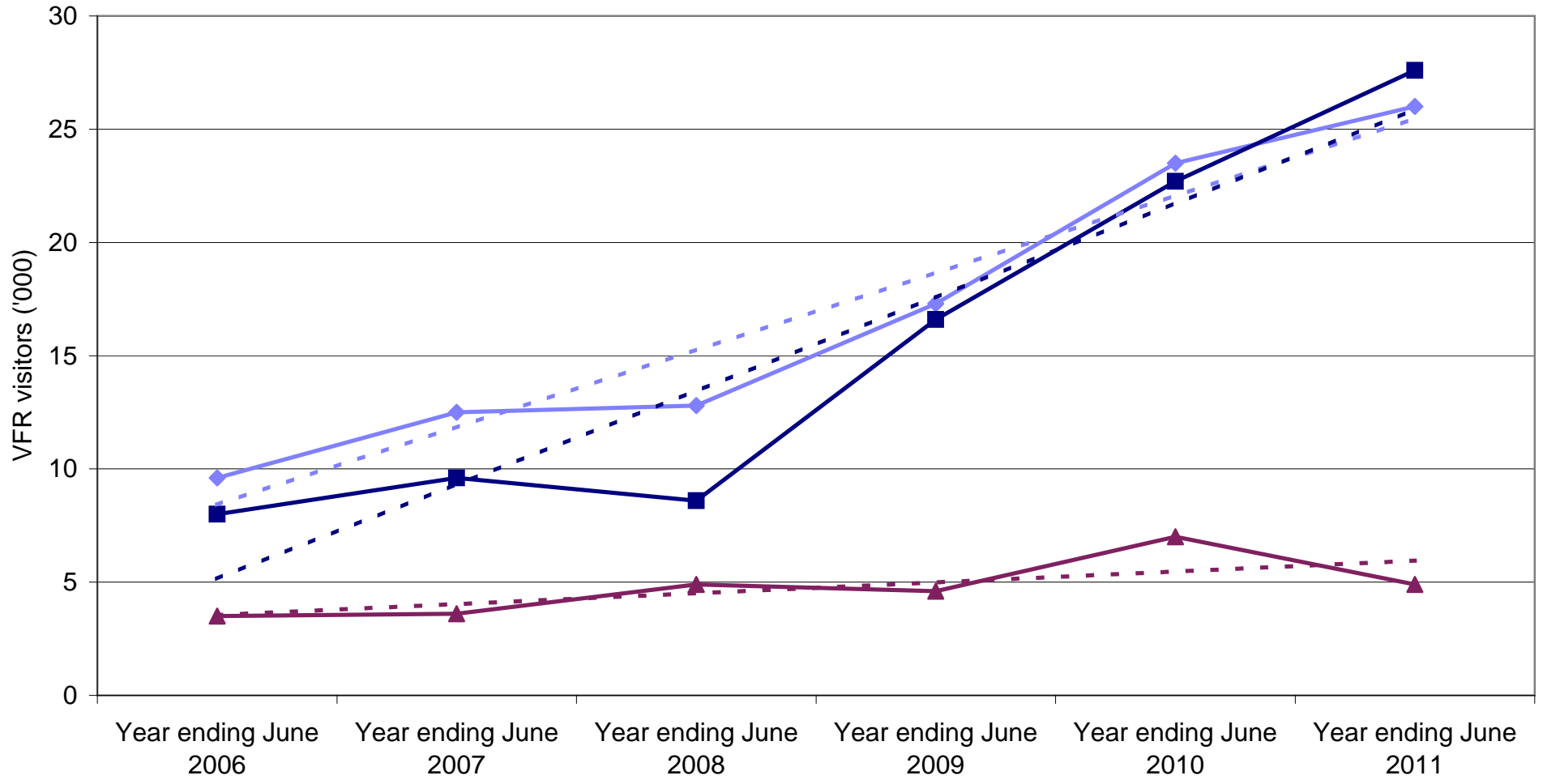
State market share of Indian holiday visitors to Australia



State market share of Indian holiday nights to Australia

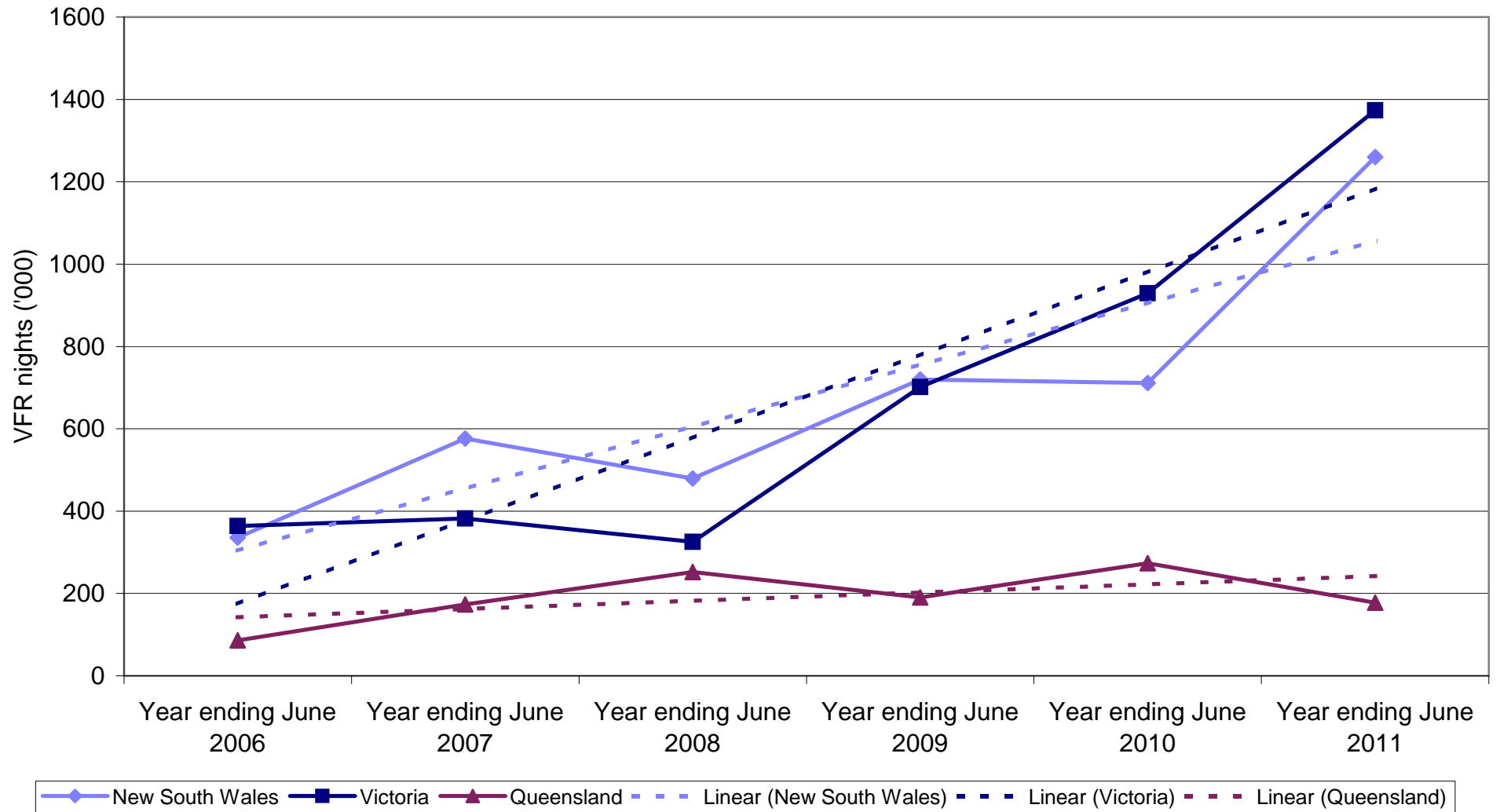


Indian VFR visitors by State visited

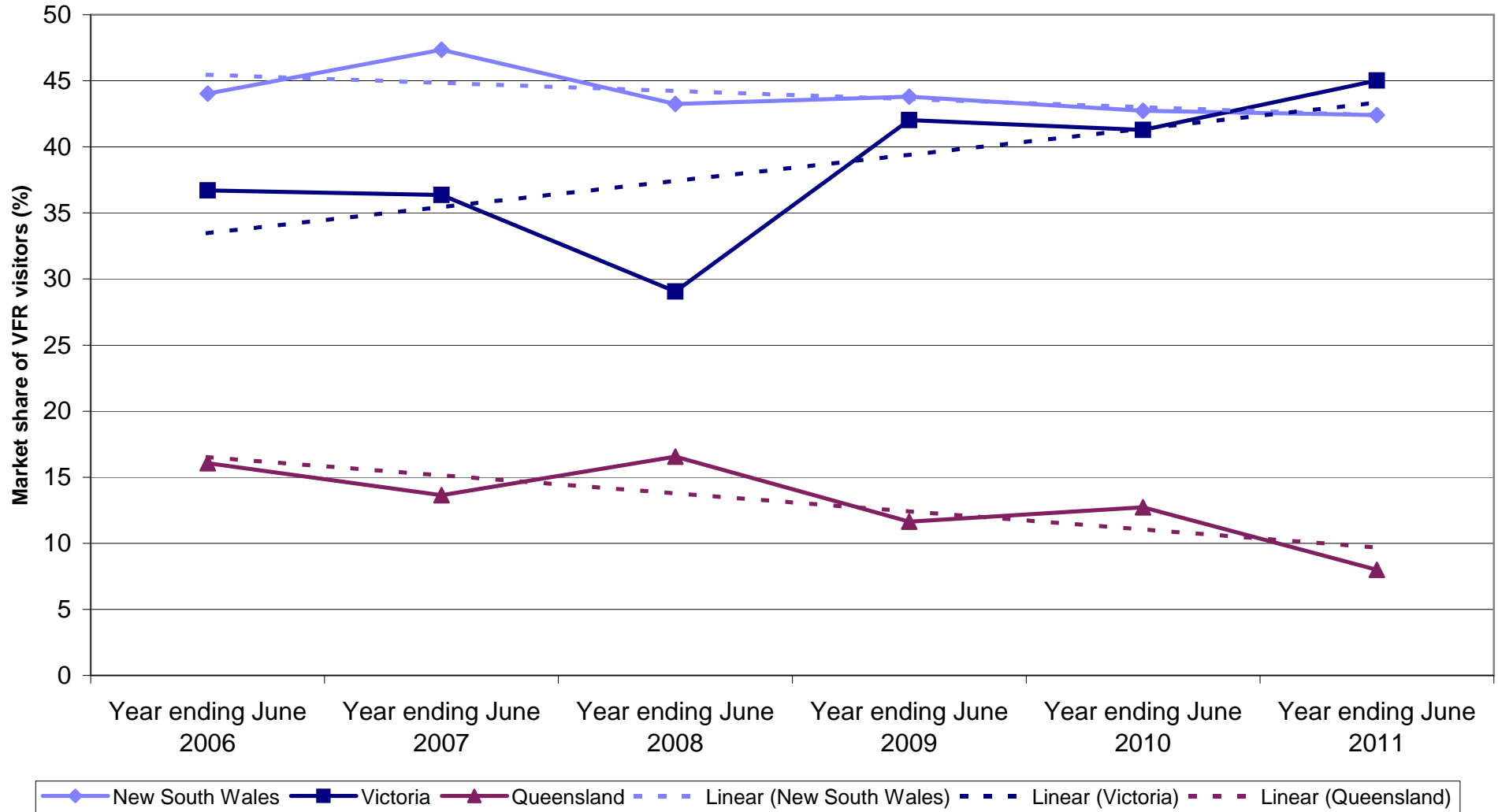


Legend: New South Wales (light blue solid line with diamond), Victoria (dark blue solid line with square), Queensland (maroon solid line with triangle), Linear (New South Wales) (light blue dashed line), Linear (Victoria) (dark blue dashed line), Linear (Queensland) (maroon dashed line).

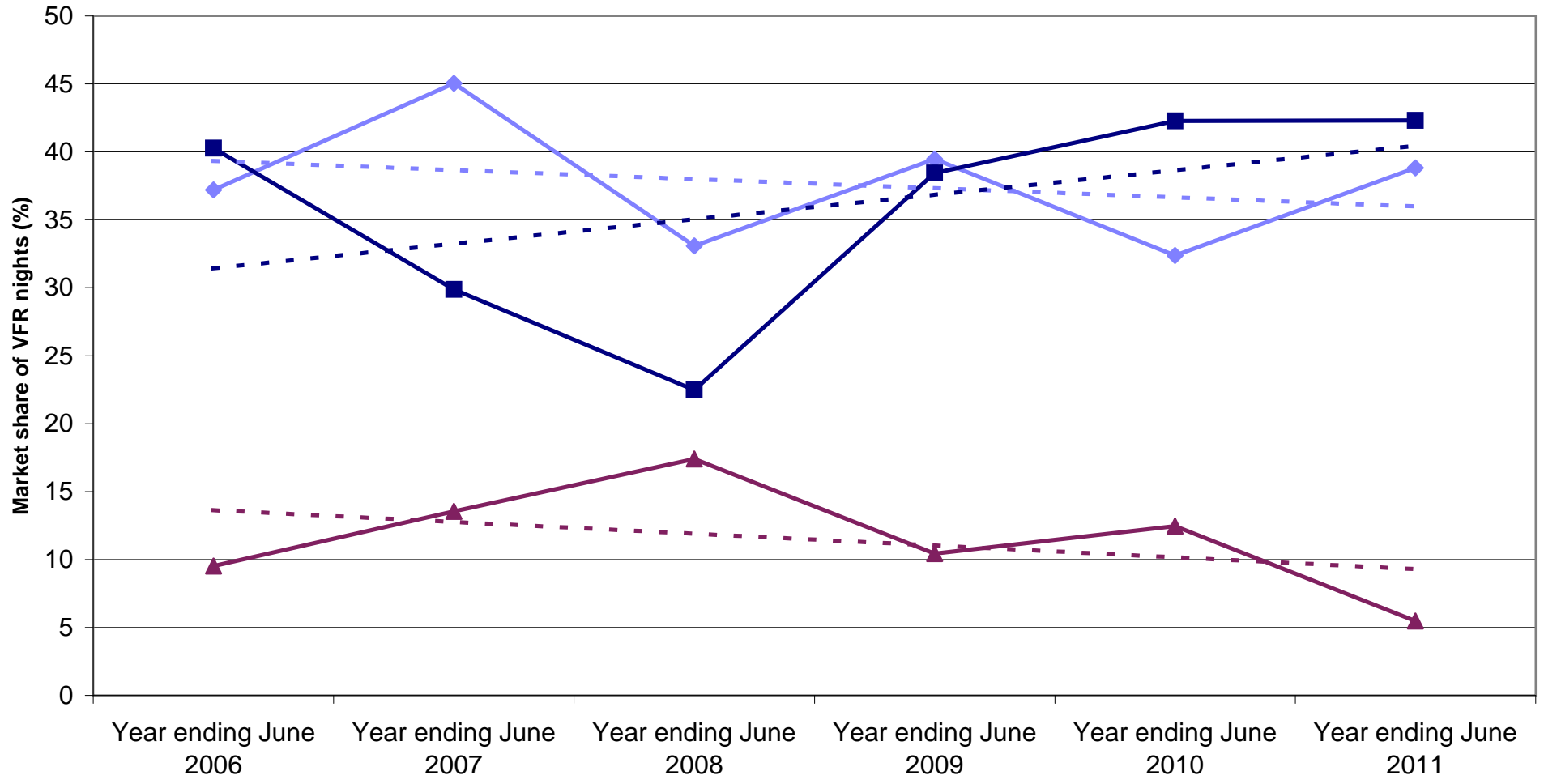
Indian VFR nights by State visited



State market share of Indian VFR visitors to Australia

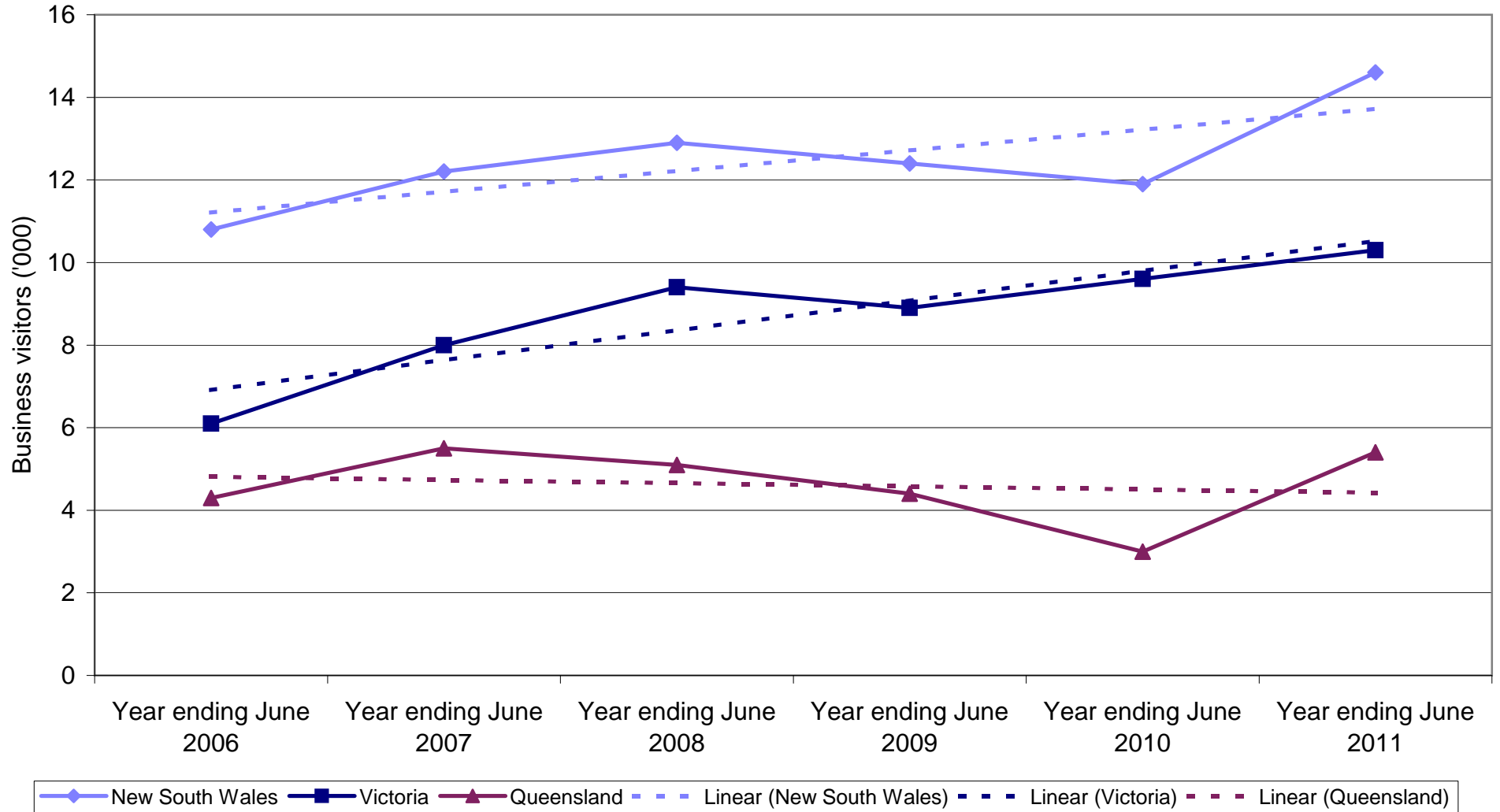


State market share of Indian VFR nights to Australia

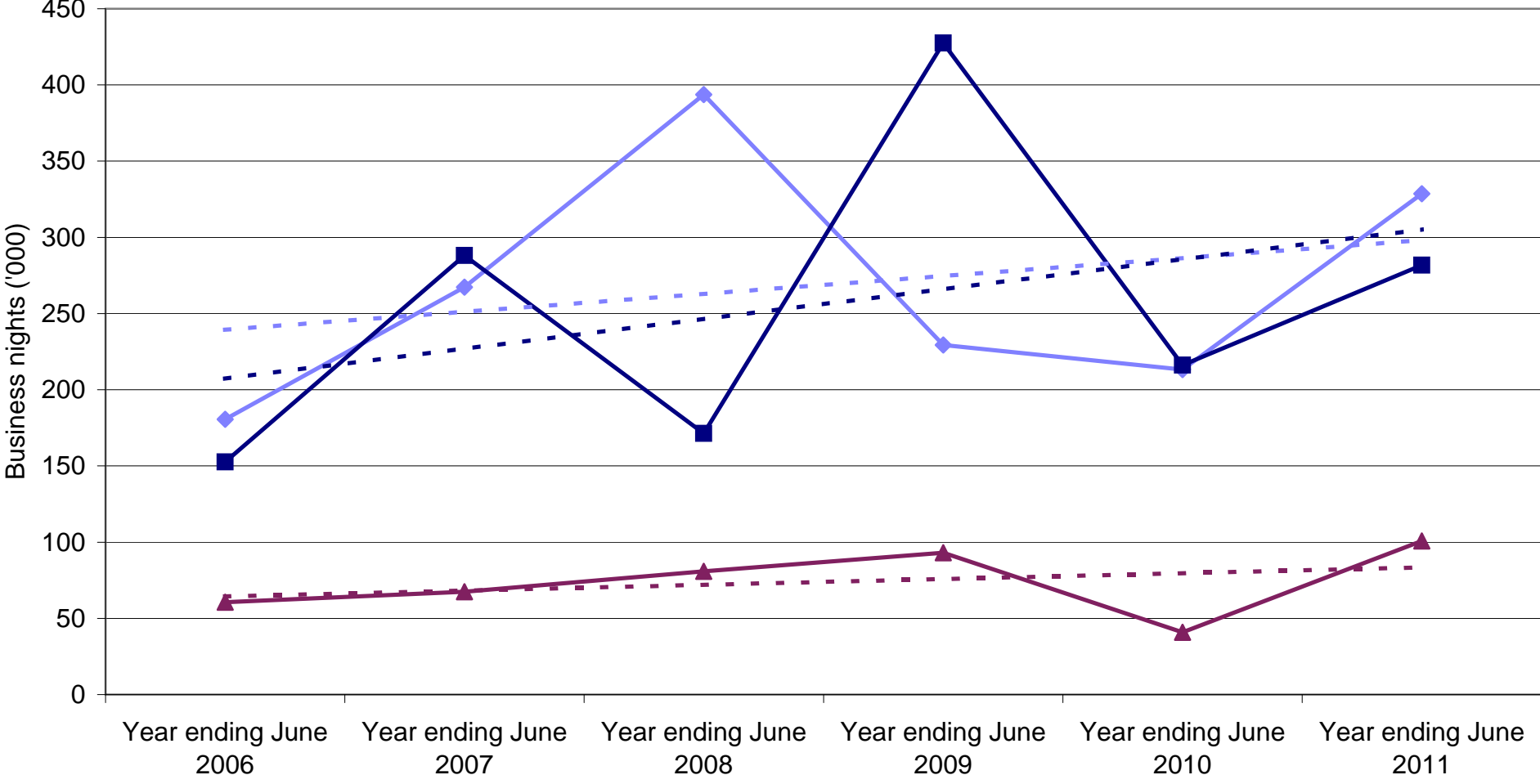


◆ New South Wales
 ■ Victoria
 ▲ Queensland
 - - - Linear (New South Wales)
 - - - Linear (Victoria)
 - - - Linear (Queensland)

Indian Business visitors by State visited

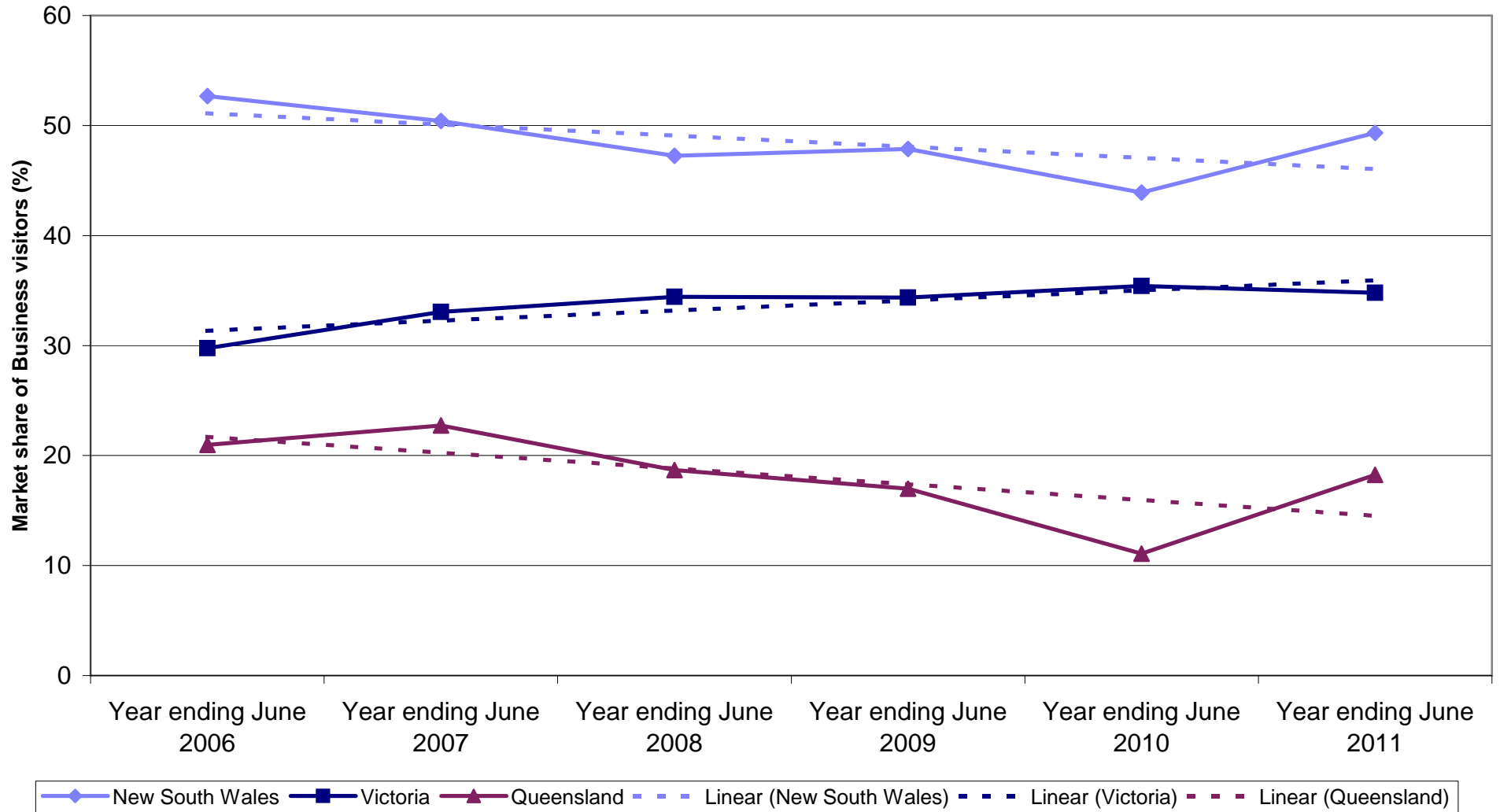


Indian Business nights by State visited

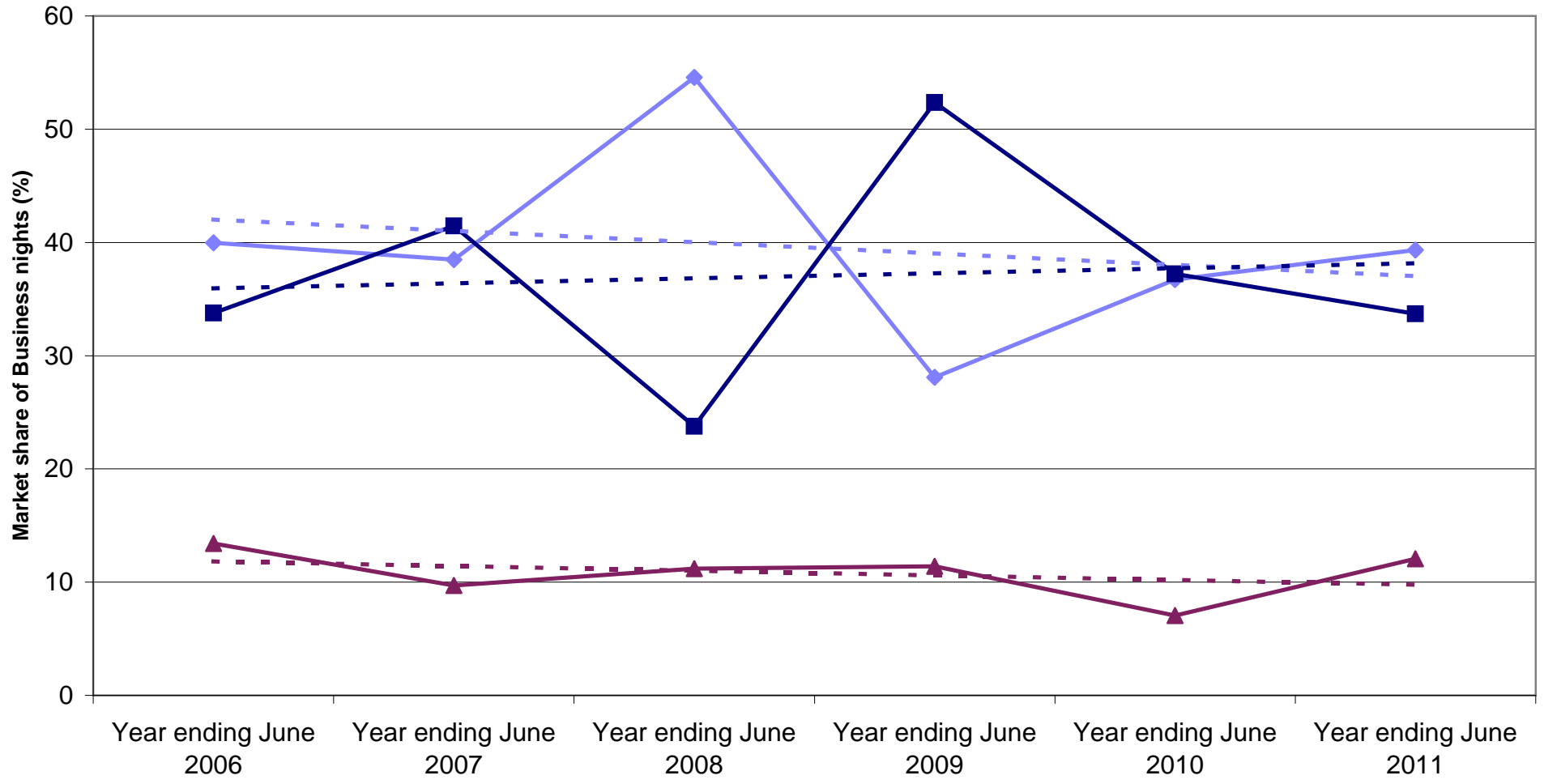


◆ New South Wales
 ■ Victoria
 ▲ Queensland
 - - - Linear (New South Wales)
 - - - Linear (Victoria)
 - - - Linear (Queensland)

State market share of Indian Business visitors to Australia

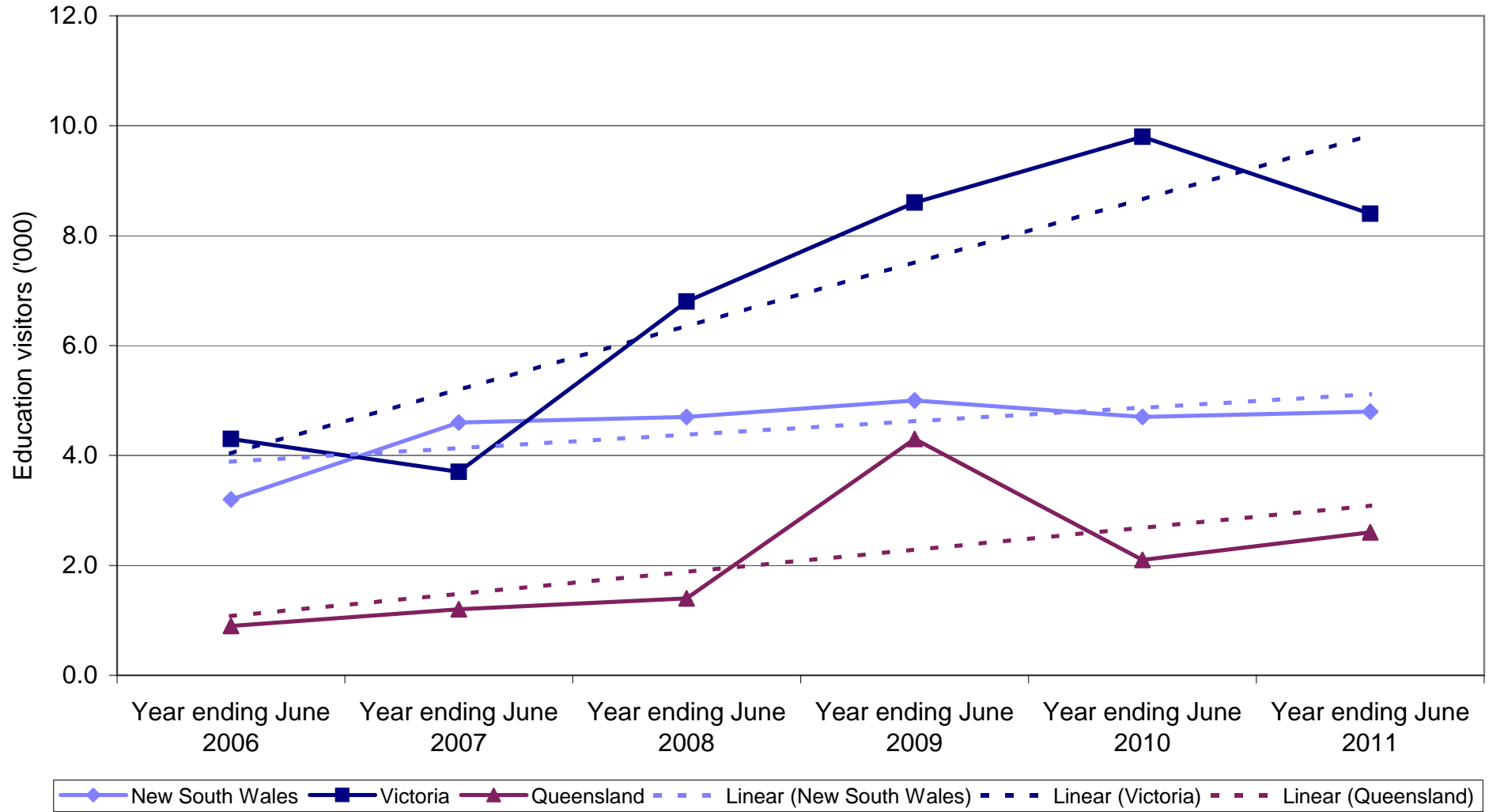


State market share of Indian Business nights to Australia

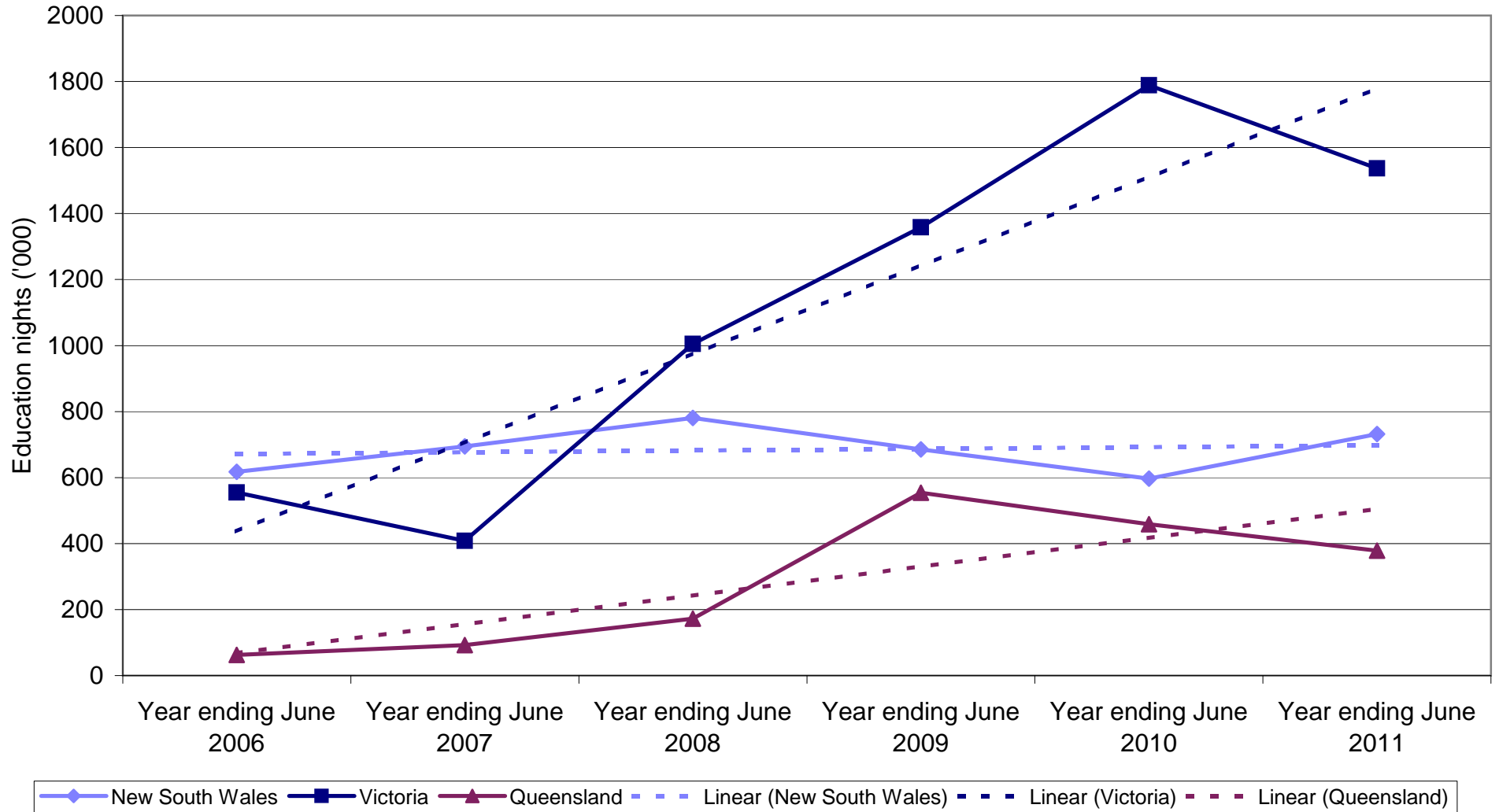


◆ New South Wales
 ■ Victoria
 ▲ Queensland
 - - - Linear (New South Wales)
 - - - Linear (Victoria)
 - - - Linear (Queensland)

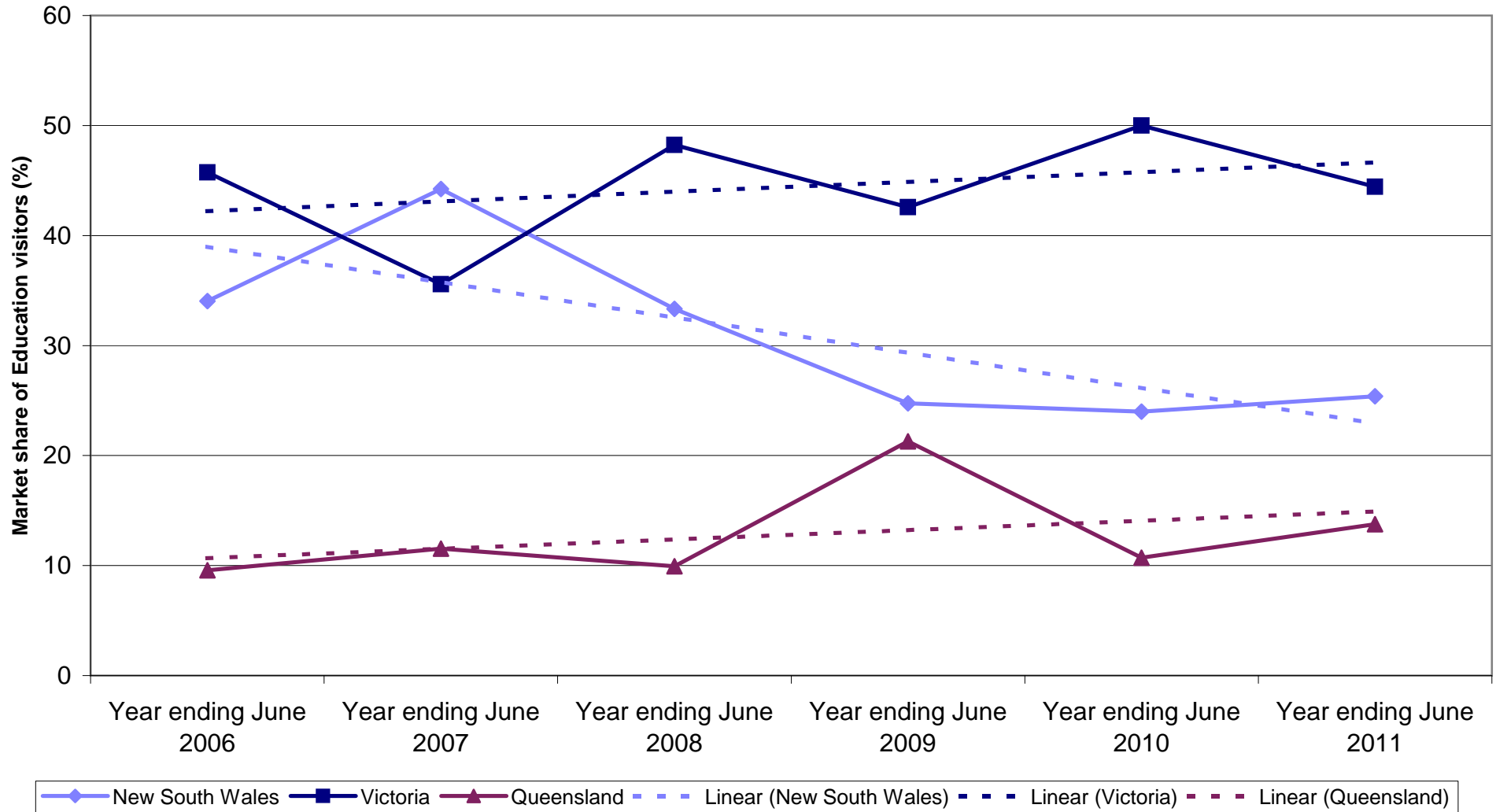
Indian Education visitors by State visited



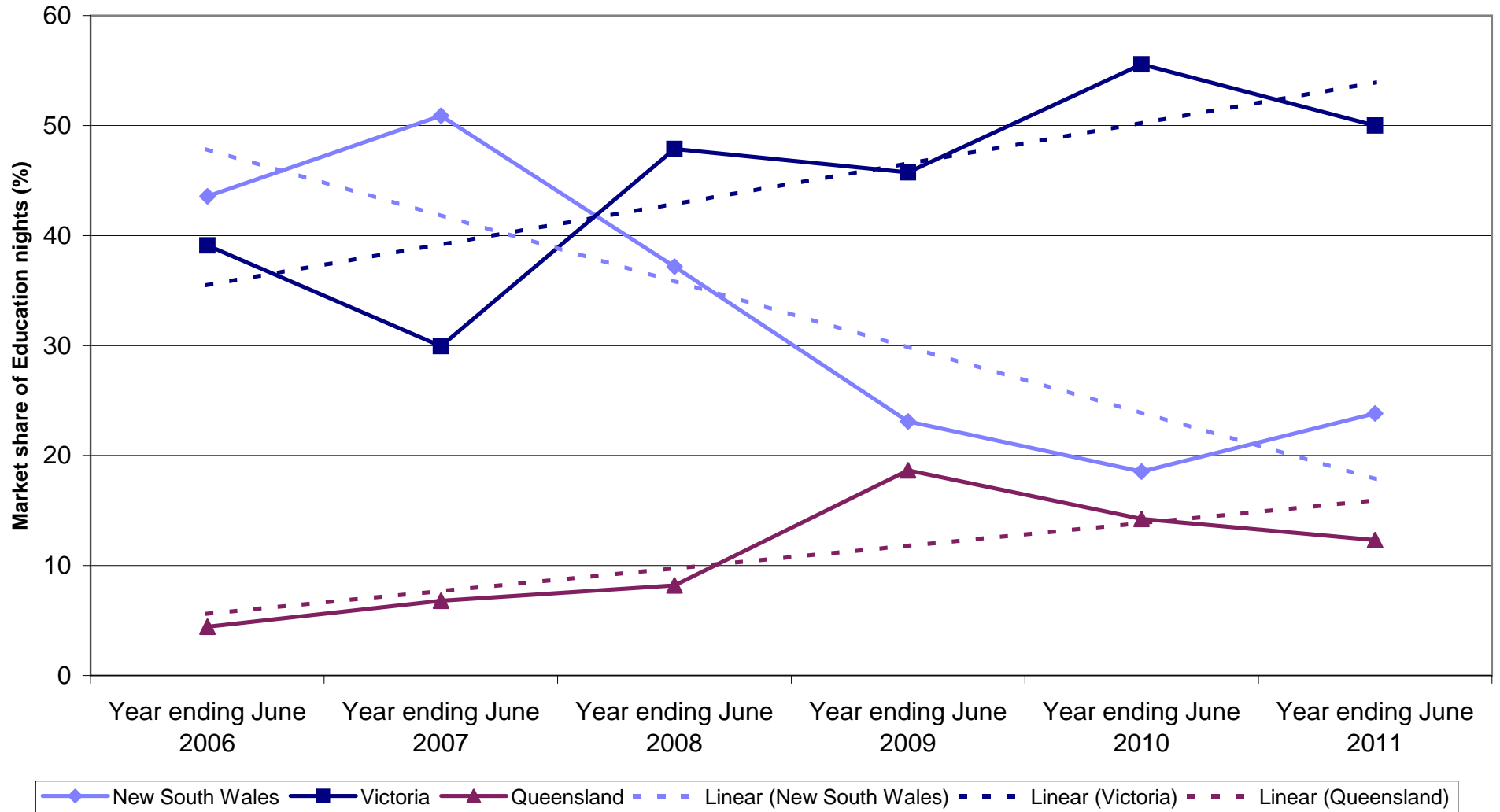
Indian Education nights by State visited



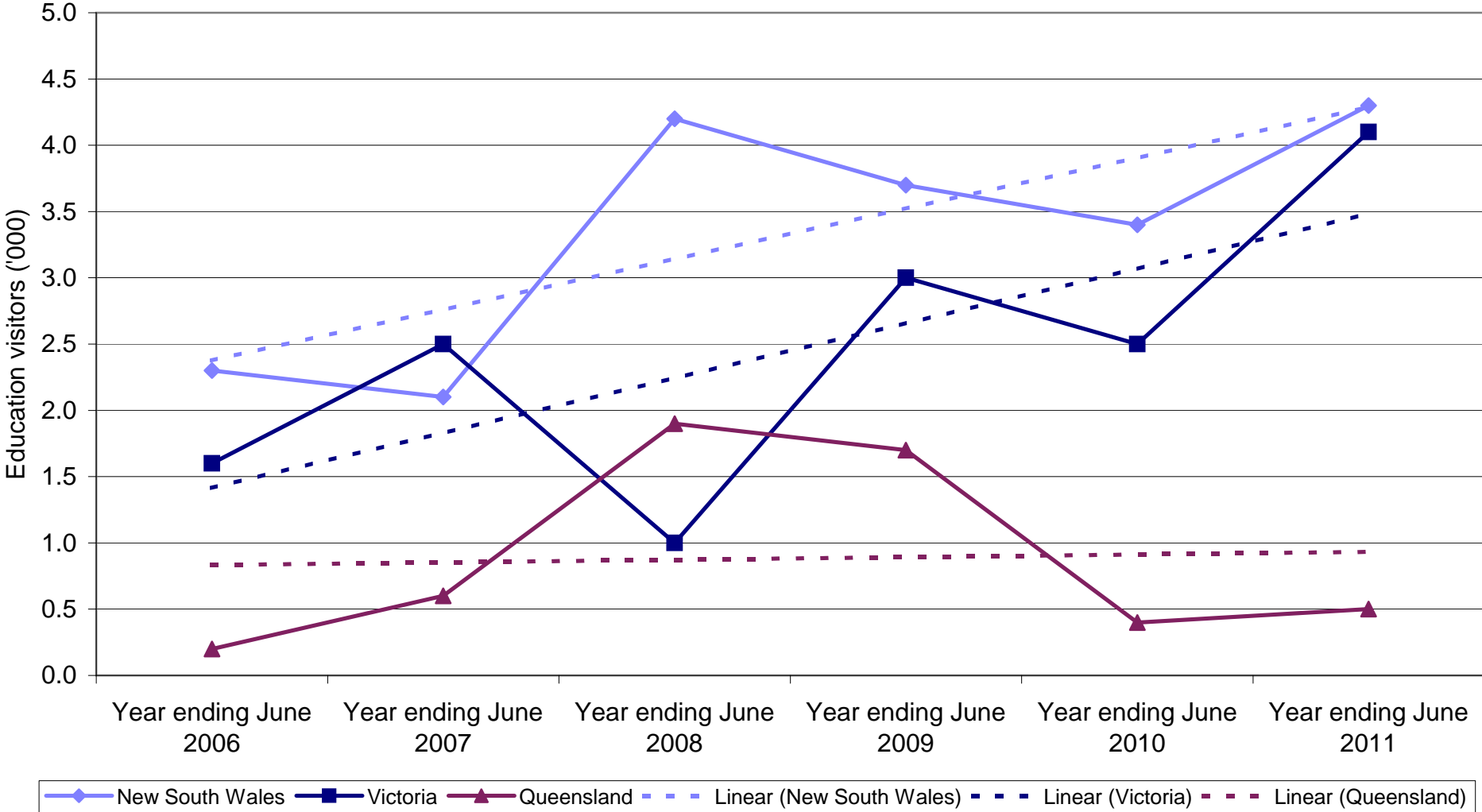
State market share of Indian Education visitors to Australia



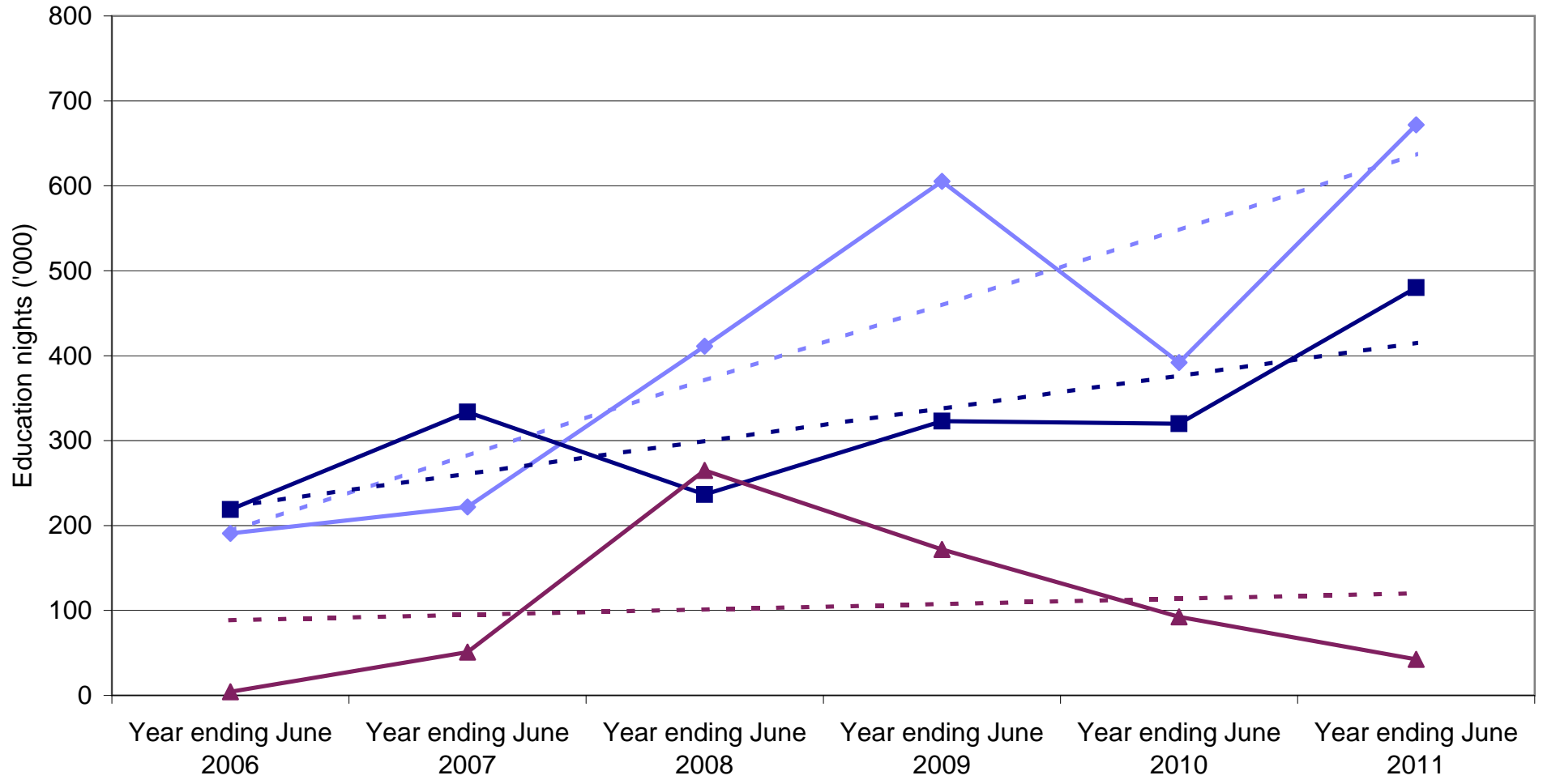
State market share of Indian Education nights to Australia



Indian Employment visitors by State visited

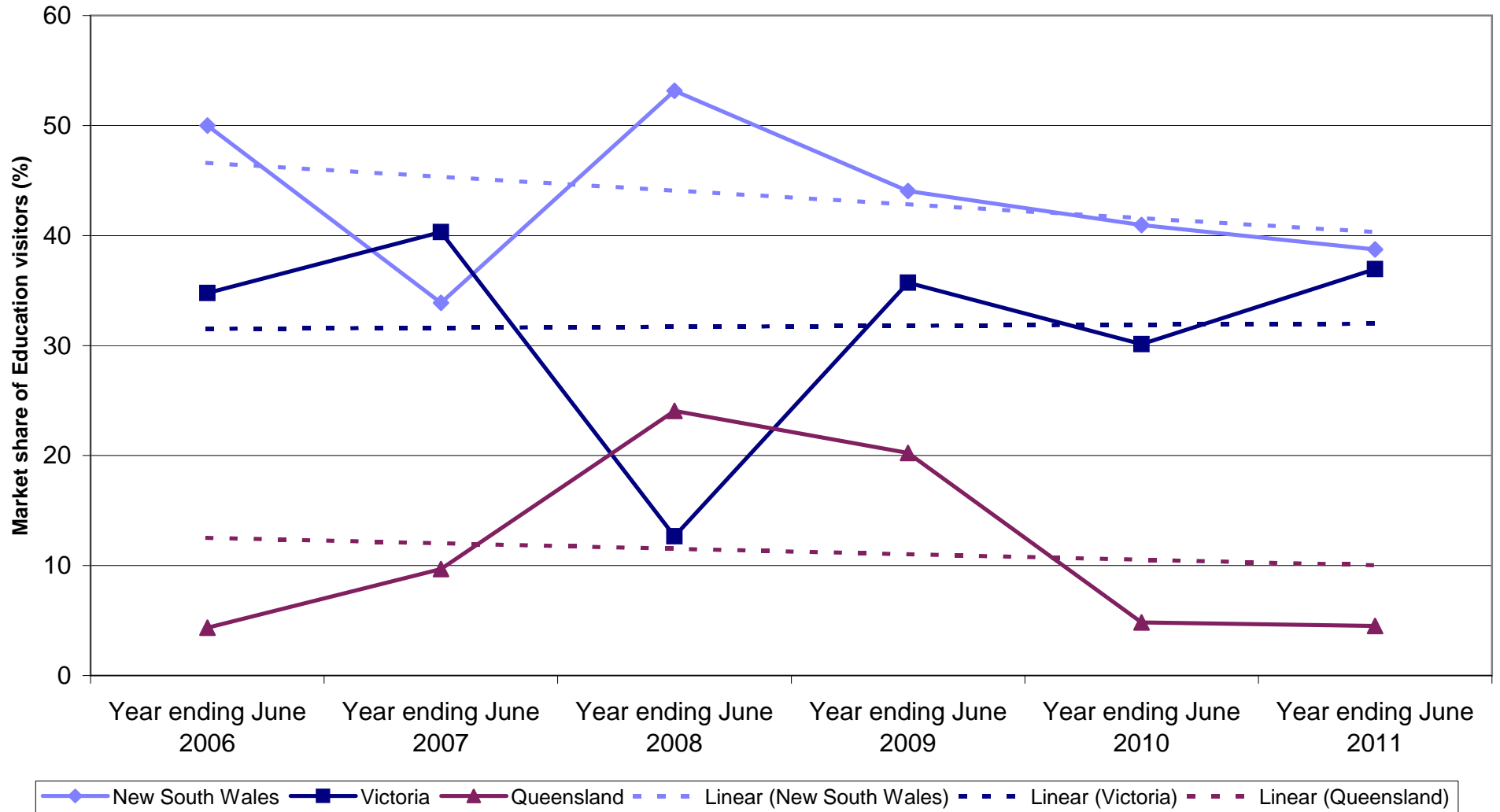


Indian Employment nights by State visited



Legend: New South Wales (blue line with diamonds), Victoria (dark blue line with squares), Queensland (maroon line with triangles), Linear (New South Wales) (dashed blue line), Linear (Victoria) (dashed dark blue line), Linear (Queensland) (dashed maroon line)

State market share of Indian Employment visitors to Australia



State market share of Indian Employment nights to Australia

