



Indonesia - Times Series Year ending June 2006 - 2011

By stopover reason for visit

Holiday visitors ('000)	State visited	Year ending June	Year ending June	Year ending June	Year ending June	Year ending June	Year ending June
		2006	2007	2008	2009	2010	2011
	New South Wales	12	13	15	16	20	28
	Victoria	8	7	9	12	13	14
	Queensland	5	4	10	8	12	13
	Total	25	26	30	33	36	49

Market share of holiday visitors (per cent)	State visited	Year ending June	Year ending June	Year ending June	Year ending June	Year ending June	Year ending June
		2006	2007	2008	2009	2010	2011
	New South Wales	49.6	50.6	50.3	48.9	56.7	56.4
	Victoria	30.5	28.0	30.3	35.7	36.6	28.0
	Queensland	20.7	14.8	31.7	24.0	34.6	26.2

Holiday visitor nights ('000)	State visited	Year ending June	Year ending June	Year ending June	Year ending June	Year ending June	Year ending June
		2006	2007	2008	2009	2010	2011
	New South Wales	112	152	107	94	298	255
	Victoria	63	65	150	85	165	138
	Queensland	21	25	70	39	67	74
	Total	281	345	378	289	611	581

Market share of holiday visitor nights (per cent)	State visited	Year ending June	Year ending June	Year ending June	Year ending June	Year ending June	Year ending June
		2006	2007	2008	2009	2010	2011
	New South Wales	40.0	44.0	28.3	32.4	48.8	43.9
	Victoria	22.6	18.9	39.7	29.4	27.0	23.7
	Queensland	7.6	7.3	18.5	13.6	11.0	12.7

VFR visitors ('000)	State visited	Year ending June	Year ending June	Year ending June	Year ending June	Year ending June	Year ending June
		2006	2007	2008	2009	2010	2011
	New South Wales	7	7	9	11	17	12
	Victoria	6	9	9	9	16	13
	Queensland	3	3	1	3	2	4
	Total	25	25	26	29	40	40

Market share of VFR visitors (per cent)	State visited	Year ending June	Year ending June	Year ending June	Year ending June	Year ending June	Year ending June
		2006	2007	2008	2009	2010	2011
	New South Wales	29.2	28.0	34.0	37.9	41.5	29.7
	Victoria	22.8	33.9	34.0	30.0	40.5	32.2
	Queensland	12.8	12.6	5.4	10.0	4.0	10.0

VFR visitor nights ('000)	State visited	Year ending June	Year ending June	Year ending June	Year ending June	Year ending June	Year ending June
		2006	2007	2008	2009	2010	2011
	New South Wales	171	176	193	203	376	279
	Victoria	78	143	205	195	206	234
	Queensland	34	64	22	54	17	127
	Total	463	566	599	624	805	968

Market share of VFR visitor nights (per cent)	State visited	Year ending June	Year ending June	Year ending June	Year ending June	Year ending June	Year ending June
		2006	2007	2008	2009	2010	2011
	New South Wales	36.9	31.1	32.3	32.6	46.7	28.9
	Victoria	16.7	25.3	34.2	31.3	25.5	24.1
	Queensland	7.3	11.3	3.6	8.7	2.1	13.1

Source: International Visitor Survey.

Base: All visitors aged 15 years and over travel grid completed.

Indonesia - Times Series Year ending June 2006 - 2011

Business visitors ('000)	State visited	Year ending June	Year ending June	Year ending June	Year ending June	Year ending June	Year ending June
		2006	2007	2008	2009	2010	2011
	New South Wales	4	3	6	5	6	7
	Victoria	2	3	4	4	3	6
	Queensland	2	2	2	2	3	2
	Total	11	13	16	14	16	20

Market share of business visitors (per cent)	State visited	Year ending June	Year ending June	Year ending June	Year ending June	Year ending June	Year ending June
		2006	2007	2008	2009	2010	2011
	New South Wales	36.0	22.7	39.7	37.3	34.8	33.3
	Victoria	15.3	22.7	26.9	25.4	20.1	29.2
	Queensland	17.1	18.8	12.2	10.6	20.1	9.2

Business visitor nights ('000)	State visited	Year ending June	Year ending June	Year ending June	Year ending June	Year ending June	Year ending June
		2006	2007	2008	2009	2010	2011
	New South Wales	45	22	50	33	34	55
	Victoria	15	11	38	38	23	33
	Queensland	11	23	16	6	19	19
	Total	120	107	149	145	132	189

Market share of business visitor nights (per cent)	State visited	Year ending June	Year ending June	Year ending June	Year ending June	Year ending June	Year ending June
		2006	2007	2008	2009	2010	2011
	New South Wales	37.5	20.9	33.4	22.9	25.5	29.3
	Victoria	12.5	10.7	25.4	25.8	17.6	17.2
	Queensland	8.9	21.3	10.4	4.1	14.1	10.0

Education visitors ('000)	State visited	Year ending June	Year ending June	Year ending June	Year ending June	Year ending June	Year ending June
		2006	2007	2008	2009	2010	2011
	New South Wales	4.9	5.1	4.9	5.4	7.2	5.7
	Victoria	5.5	6.6	6.8	5.9	7.1	7.8
	Queensland	0.6	0.8	1.5	1.8	0.7	1.1
	Total	15.2	15.9	16.0	17.7	20.1	21.2

Market share of Education visitors (per cent)	State visited	Year ending June	Year ending June	Year ending June	Year ending June	Year ending June	Year ending June
		2006	2007	2008	2009	2010	2011
	New South Wales	32.2	32.1	30.6	30.5	35.8	26.9
	Victoria	36.2	41.5	42.5	33.3	35.3	36.8
	Queensland	3.9	5.0	9.4	10.2	3.5	5.2

Education visitor nights ('000)	State visited	Year ending June	Year ending June	Year ending June	Year ending June	Year ending June	Year ending June
		2006	2007	2008	2009	2010	2011
	New South Wales	744	734	868	828	838	851
	Victoria	727	874	833	867	992	1,162
	Queensland	46	76	203	233	123	108
	Total	1,937	2,253	2,179	2,392	2,634	2,915

Market share of Education visitor nights (per cent)	State visited	Year ending June	Year ending June	Year ending June	Year ending June	Year ending June	Year ending June
		2006	2007	2008	2009	2010	2011
	New South Wales	38.4	32.6	39.8	34.6	31.8	29.2
	Victoria	37.5	38.8	38.2	36.2	37.7	39.9
	Queensland	2.4	3.4	9.3	9.7	4.7	3.7

Employment visitors ('000)	State visited	Year ending June	Year ending June	Year ending June	Year ending June	Year ending June	Year ending June
		2006	2007	2008	2009	2010	2011
	New South Wales	0.6	0.4	0.4	0.7	0.6	0.5
	Victoria	0.1	0.2	0.5	0.2	0.8	1.2
	Queensland	-	0.5	0.3	0.5	0.1	0.2
	Total	1.7	3.0	2.5	2.5	2.4	3.5

Market share of Employment visitors (per cent)	State visited	Year ending June	Year ending June	Year ending June	Year ending June	Year ending June	Year ending June
		2006	2007	2008	2009	2010	2011
	New South Wales	35.3	13.3	16.0	28.0	25.0	14.3
	Victoria	5.9	6.7	20.0	8.0	33.3	34.3
	Queensland	#VALUE!	16.7	12.0	20.0	4.2	5.7



Indonesia - Times Series Year ending June 2006 - 2011

		Year ending June 2006	Year ending June 2007	Year ending June 2008	Year ending June 2009	Year ending June 2010	Year ending June 2011
Employment visitor nights (’000)	State visited						
	New South Wales	37	68	14	38	81	23
	Victoria	3	20	26	6	74	135
	Queensland	-	39	38	64	17	18
	Total	120	204	143	179	239	297

		Year ending June 2006	Year ending June 2007	Year ending June 2008	Year ending June 2009	Year ending June 2010	Year ending June 2011
Market share of Employment visitor nights (per cent)	State visited						
	New South Wales	30.9	33.4	9.7	21.1	33.8	7.6
	Victoria	2.6	9.7	18.1	3.3	31.1	45.3
	Queensland	#VALUE!	18.9	26.2	35.8	7.3	6.1

		Year ending June 2006	Year ending June 2007	Year ending June 2008	Year ending June 2009	Year ending June 2010	Year ending June 2011
Total visitors (’000)	State visited						
	New South Wales	29.5	27.9	35.6	37.6	49.1	51.3
	Victoria	20.3	24.3	28.8	29.1	39.9	40.3
	Queensland	10.8	10.8	15.0	13.7	17.6	19.6
	Total	73.8	76.8	84.6	86.1	106.1	120.1

		Year ending June 2006	Year ending June 2007	Year ending June 2008	Year ending June 2009	Year ending June 2010	Year ending June 2011
Market share of total visitors (per cent)	State visited						
	New South Wales	40.0	36.3	42.1	43.7	46.3	42.7
	Victoria	27.5	31.6	34.0	33.8	37.6	33.6
	Queensland	14.6	14.1	17.7	15.9	16.6	16.3

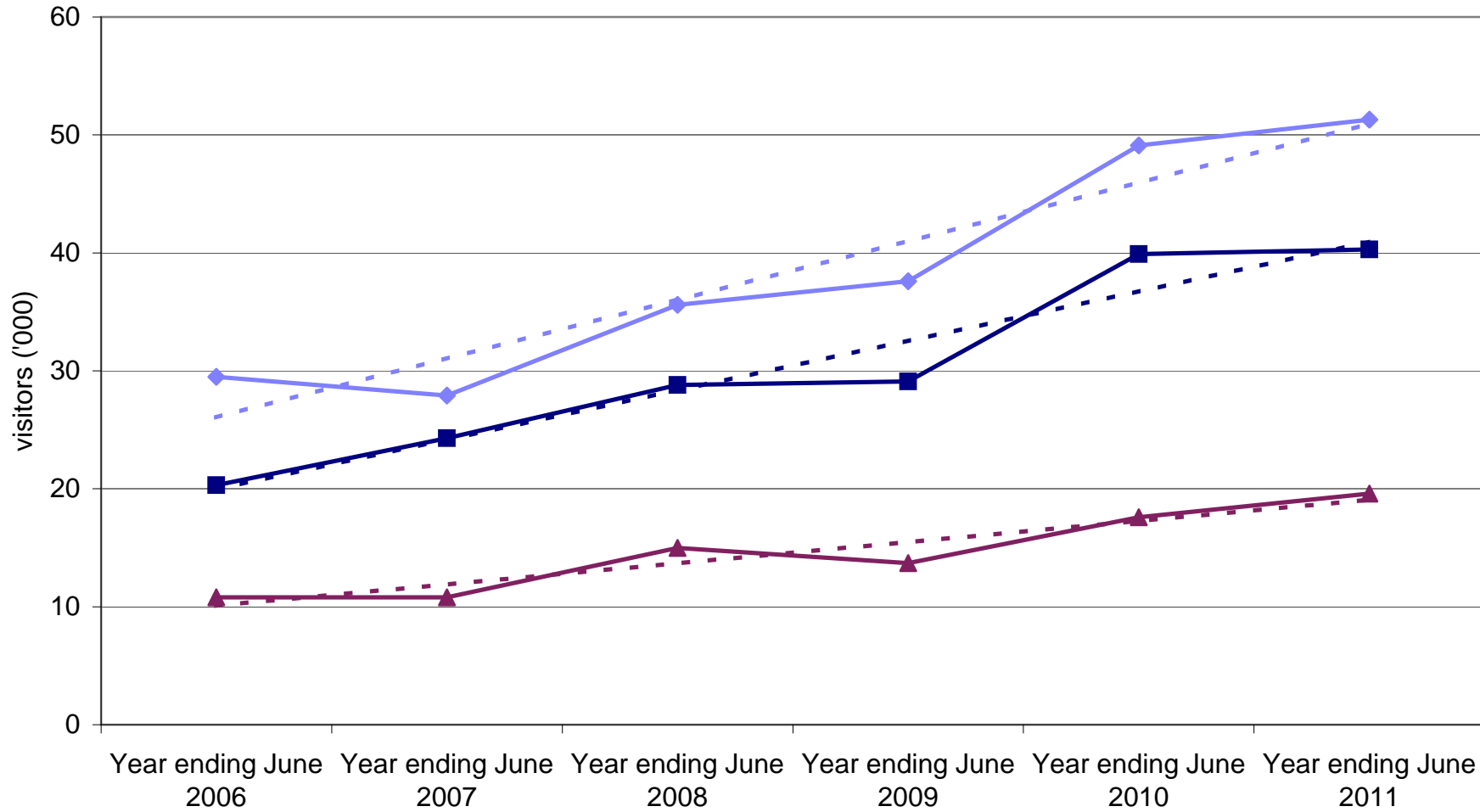
		Year ending June 2006	Year ending June 2007	Year ending June 2008	Year ending June 2009	Year ending June 2010	Year ending June 2011
Total visitor nights (’000)	State visited						
	New South Wales	1,121	1,155	1,252	1,214	1,627	1,464
	Victoria	922	1,115	1,252	1,192	1,463	1,701
	Queensland	112	227	350	398	243	349
	Total	2,987	3,484	3,479	3,652	4,448	5,079

		Year ending June 2006	Year ending June 2007	Year ending June 2008	Year ending June 2009	Year ending June 2010	Year ending June 2011
Market share of total visitor nights (per cent)	State visited						
	New South Wales	37.5	33.2	36.0	33.2	36.6	28.8
	Victoria	30.9	32.0	36.0	32.6	32.9	33.5
	Queensland	3.7	6.5	10.0	10.9	5.5	6.9

Source: International Visitor Survey.

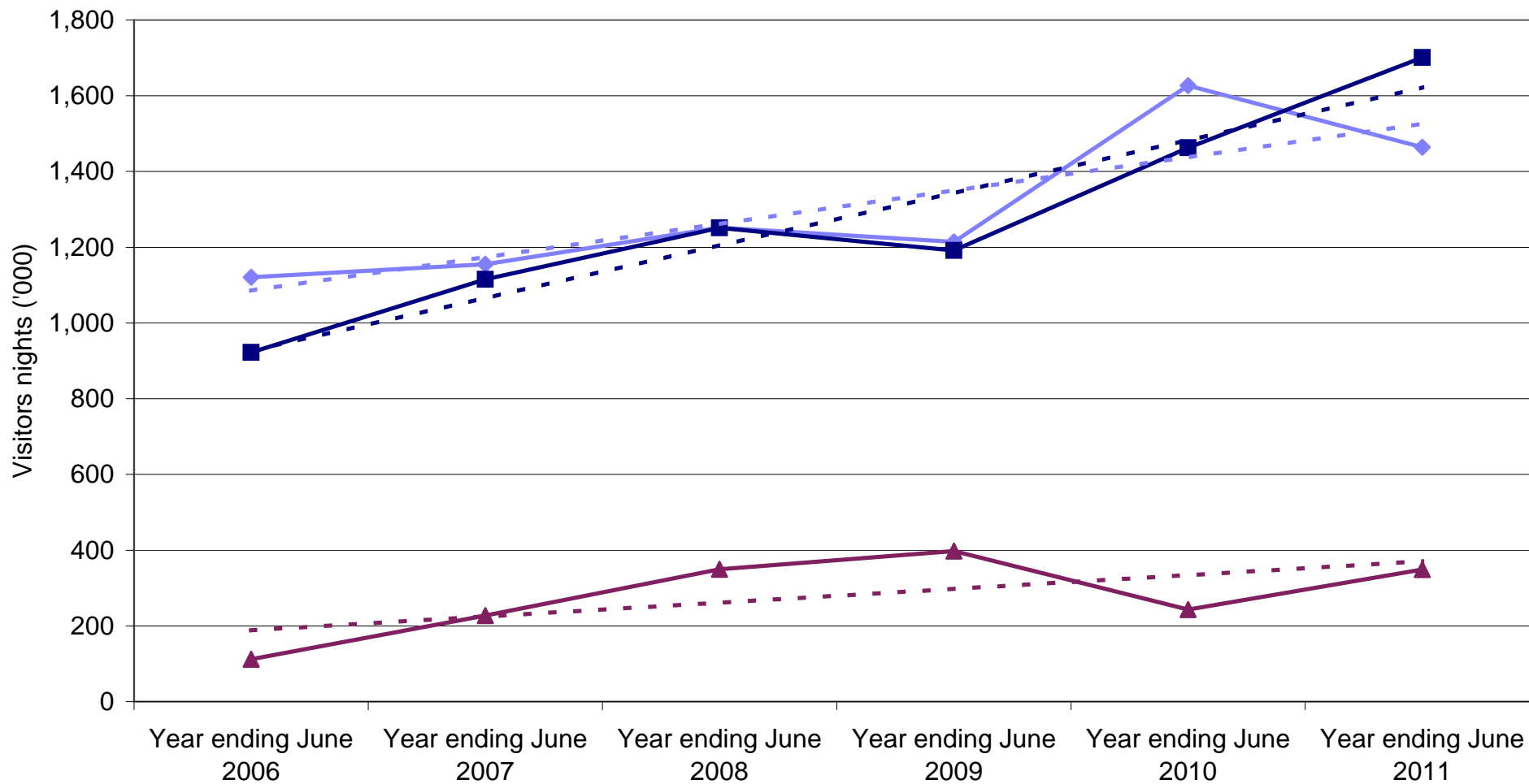
Base: All visitors aged 15 years and over travel grid completed.

Indonesian visitors by State visited



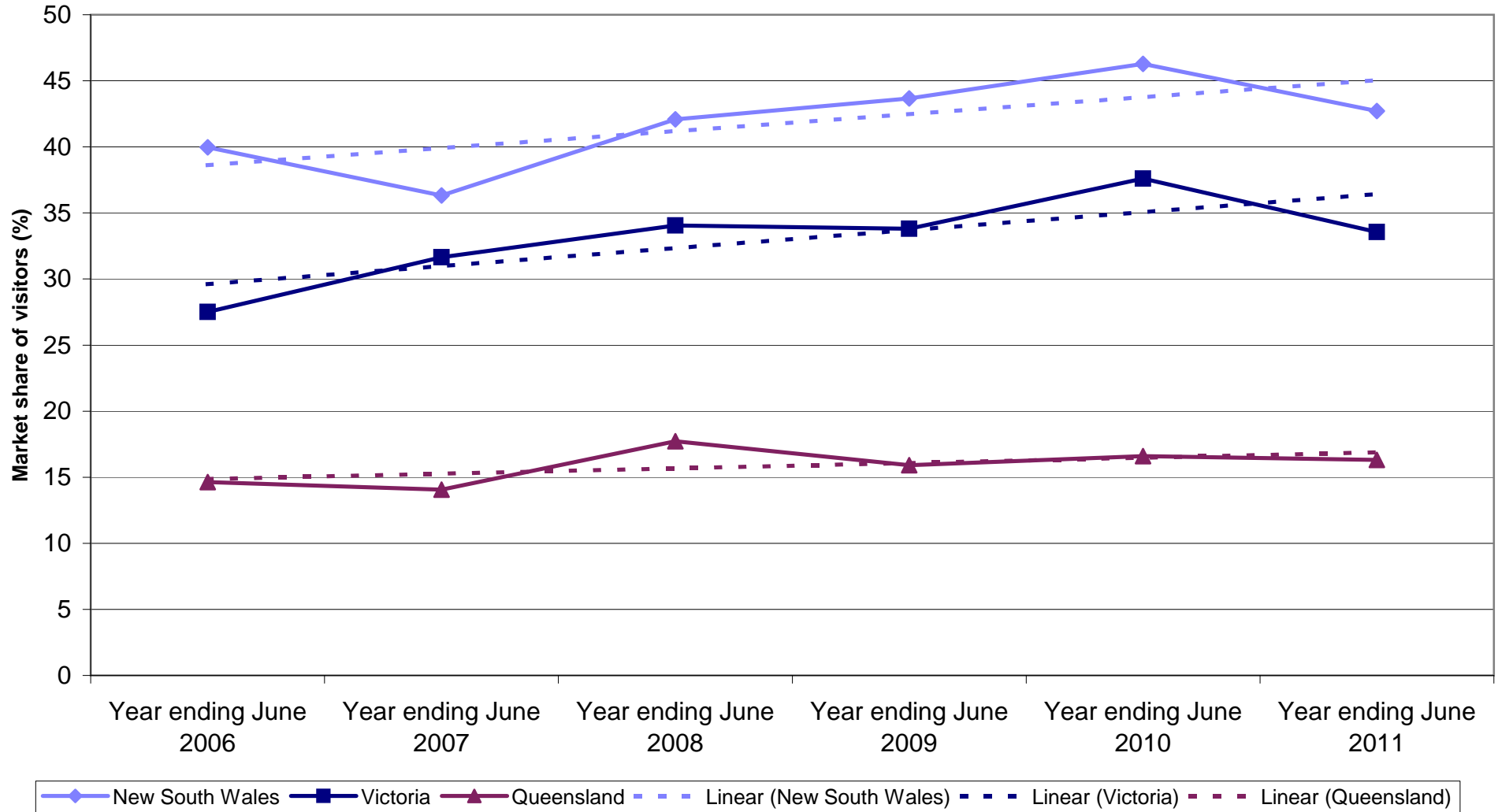
Legend: New South Wales (solid blue line with diamonds), Victoria (solid dark blue line with squares), Queensland (solid maroon line with triangles), Linear (New South Wales) (dashed blue line), Linear (Victoria) (dashed dark blue line), Linear (Queensland) (dashed maroon line).

Indonesian nights by State visited

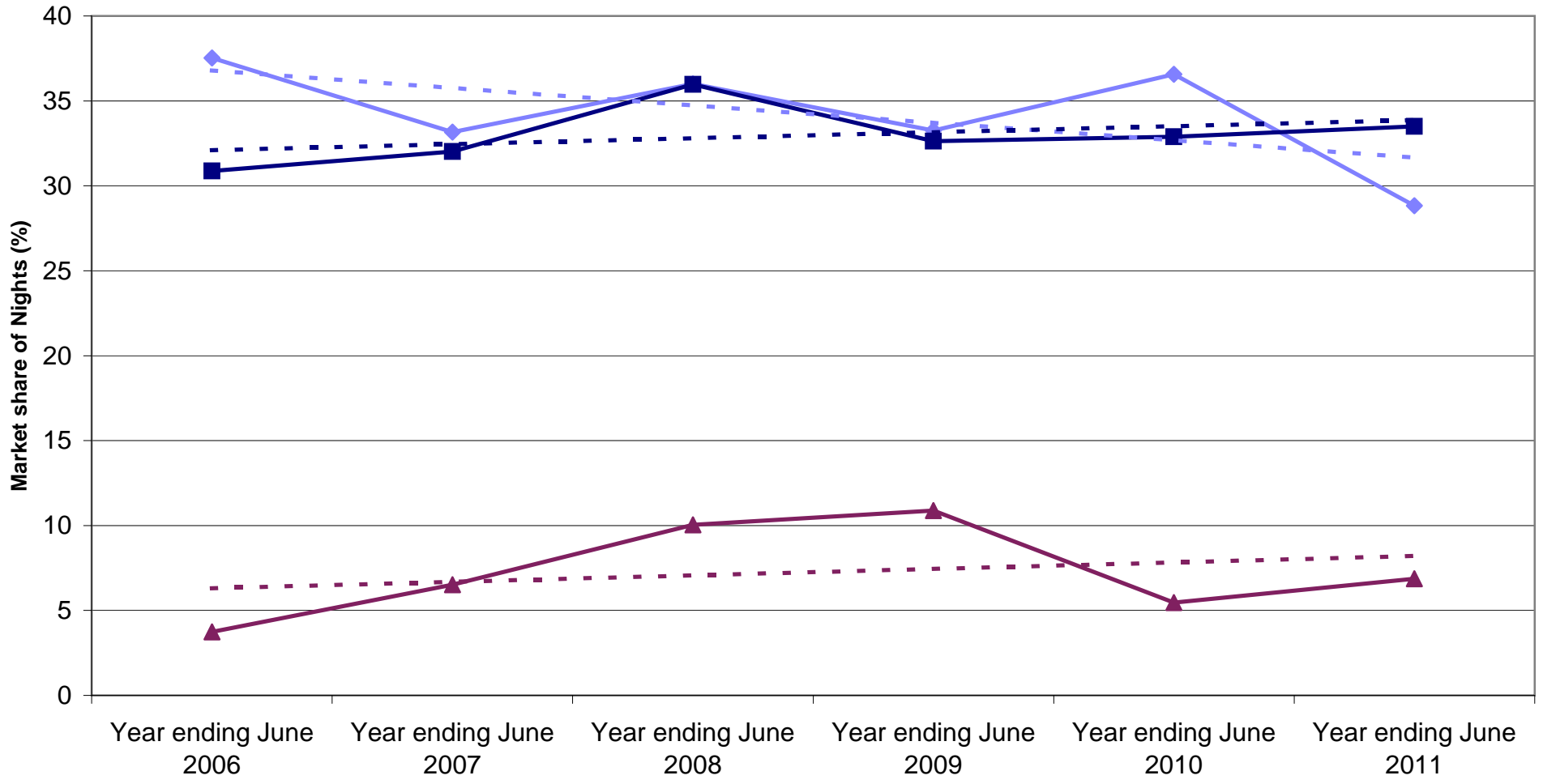


Legend: New South Wales (solid blue line with diamond markers), Victoria (solid dark blue line with square markers), Queensland (solid maroon line with triangle markers), Linear (New South Wales) (dashed light blue line), Linear (Victoria) (dashed dark blue line), Linear (Queensland) (dashed maroon line).

State market share of Indonesian visitors to Australia

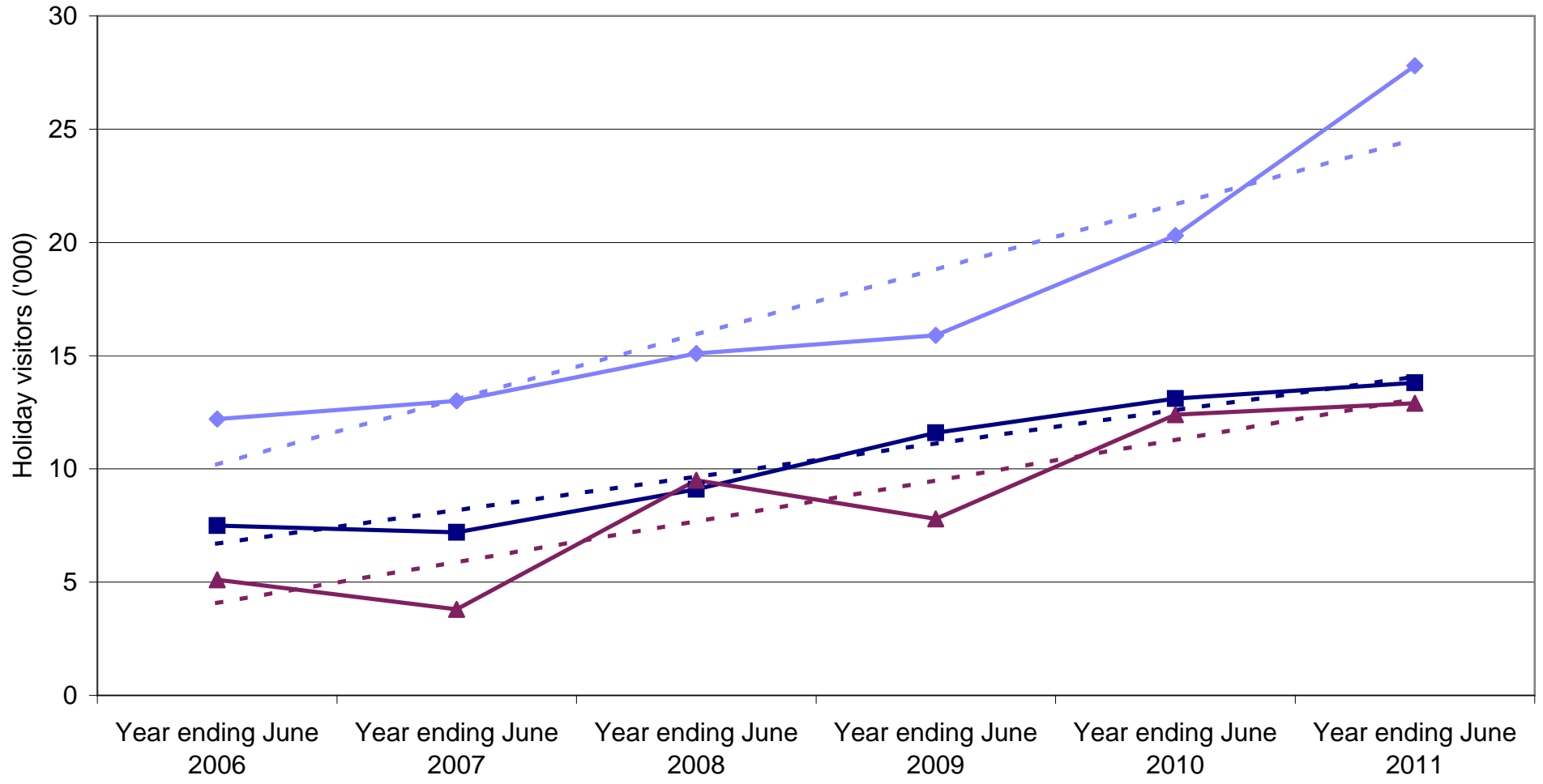


State market share of Indonesian nights to Australia



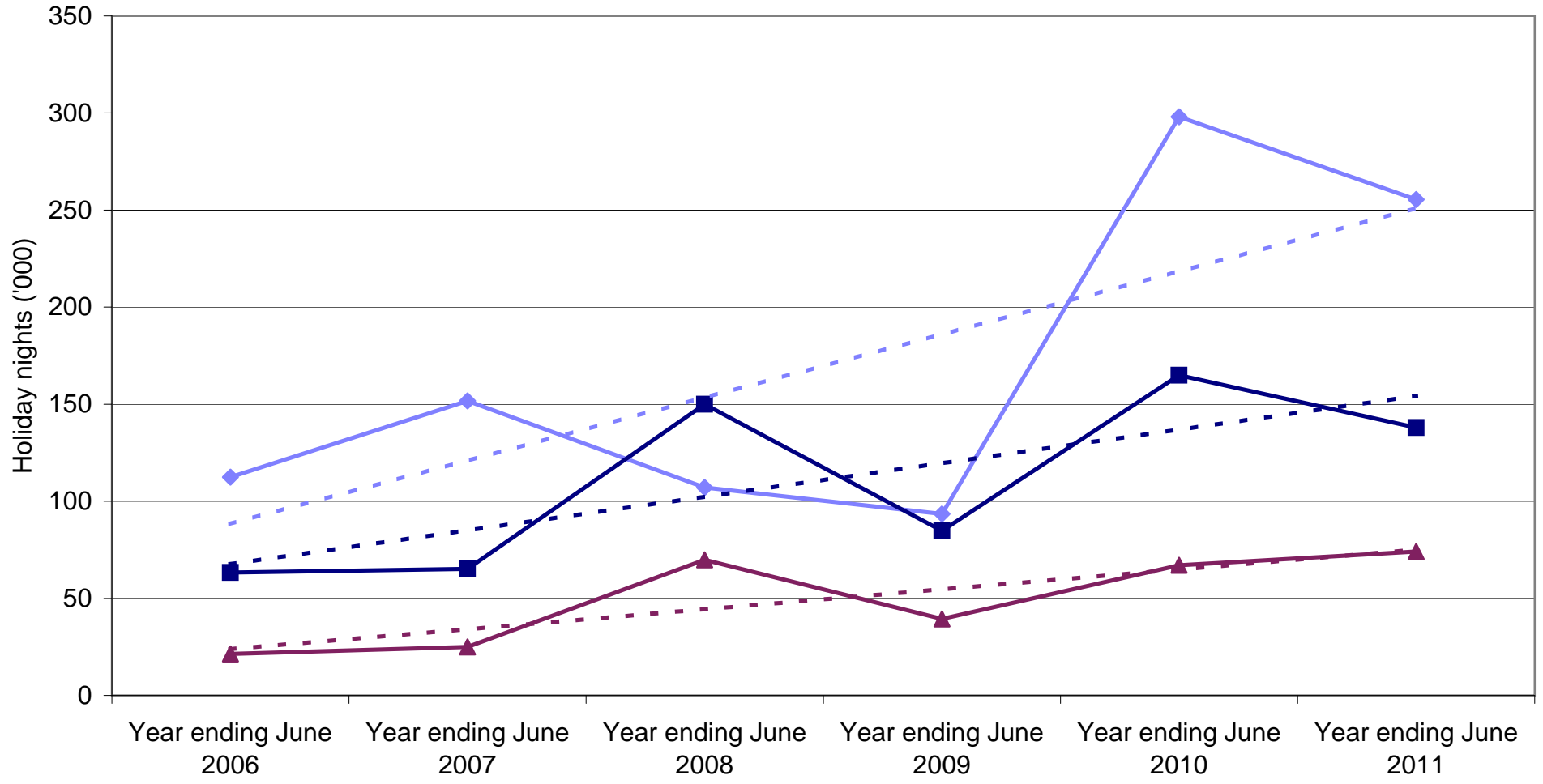
◆ New South Wales
 ■ Victoria
 ▲ Queensland
 - - - Linear (New South Wales)
 - - - Linear (Victoria)
 - - - Linear (Queensland)

Indonesian holiday visitors by State visited



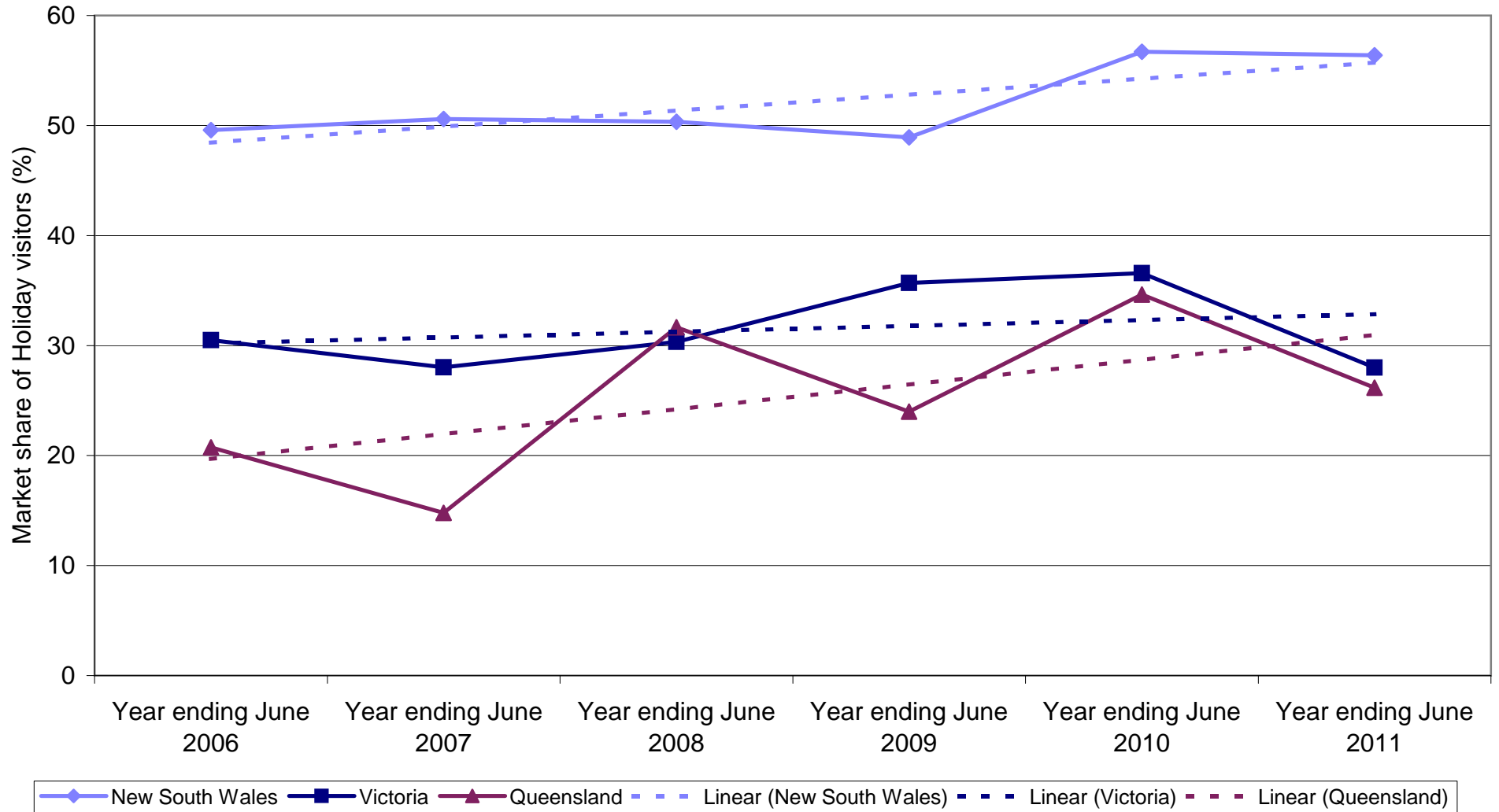
◆ New South Wales ■ Victoria ▲ Queensland - - - Linear (New South Wales) - - - Linear (Victoria) - - - Linear (Queensland)

Indonesian holiday nights by State visited

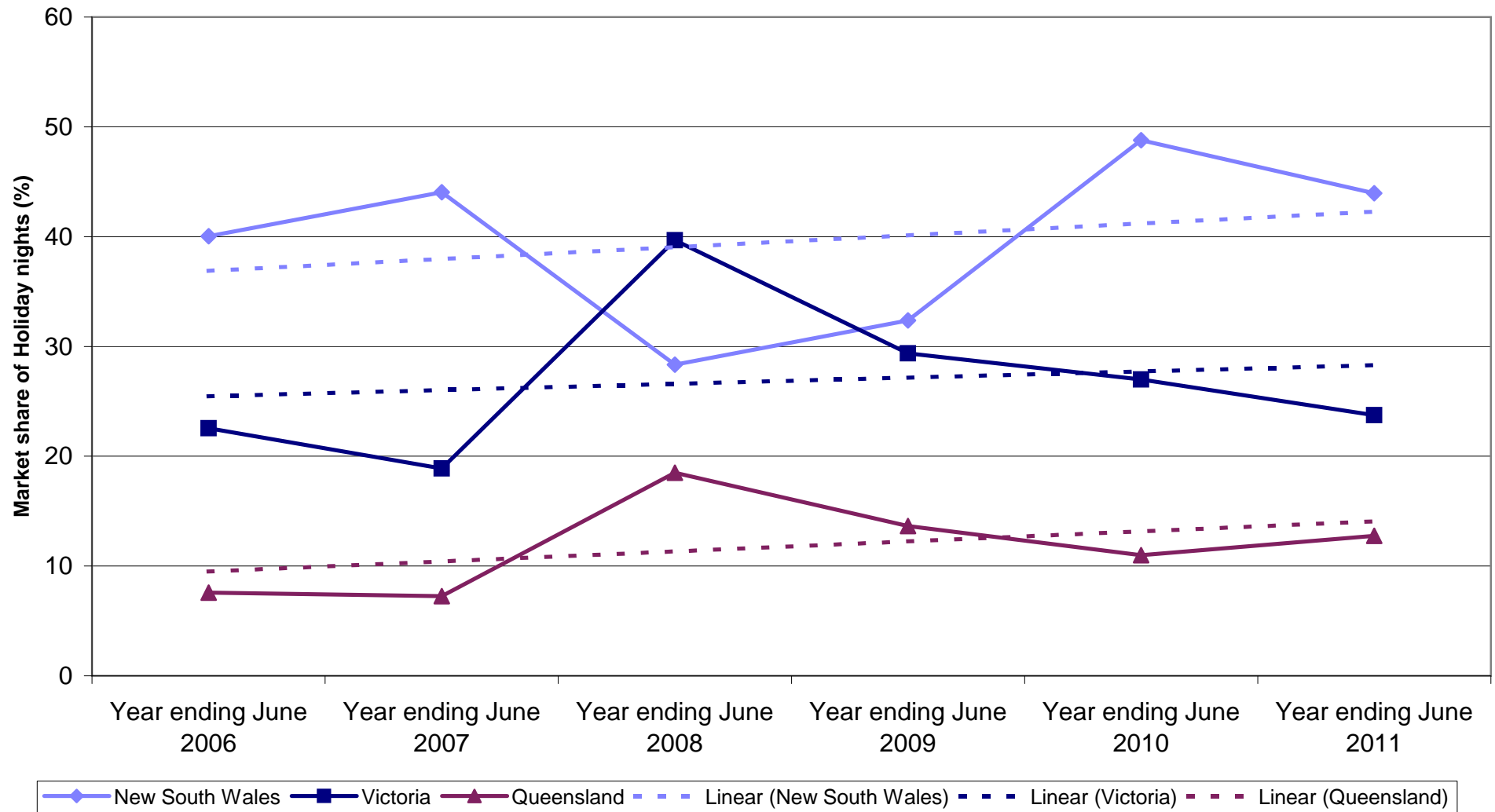


Legend: New South Wales (solid blue line with diamond markers), Victoria (solid dark blue line with square markers), Queensland (solid maroon line with triangle markers), Linear (New South Wales) (dashed light blue line), Linear (Victoria) (dashed dark blue line), Linear (Queensland) (dashed maroon line).

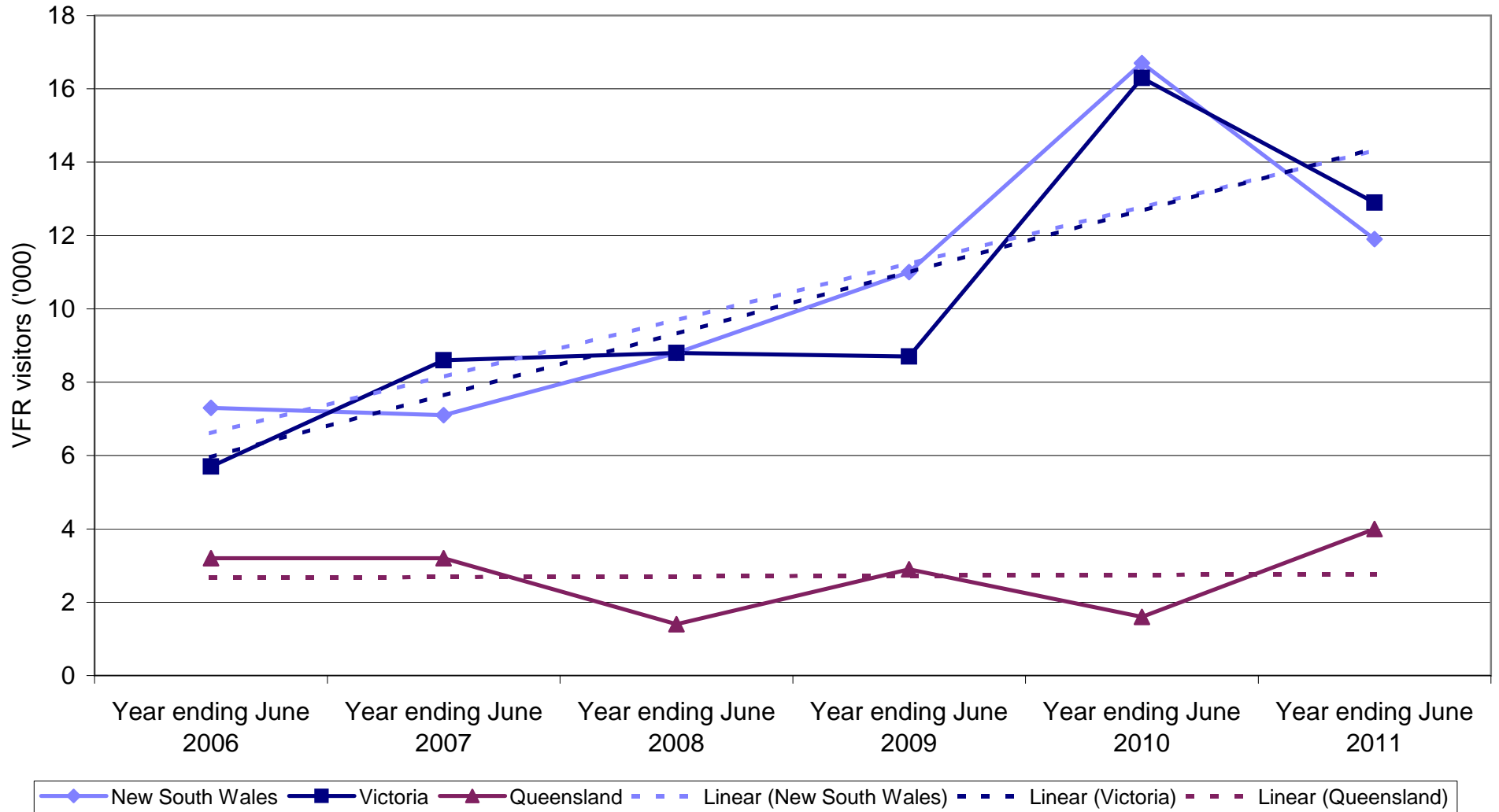
State market share of Indonesian holiday visitors to Australia



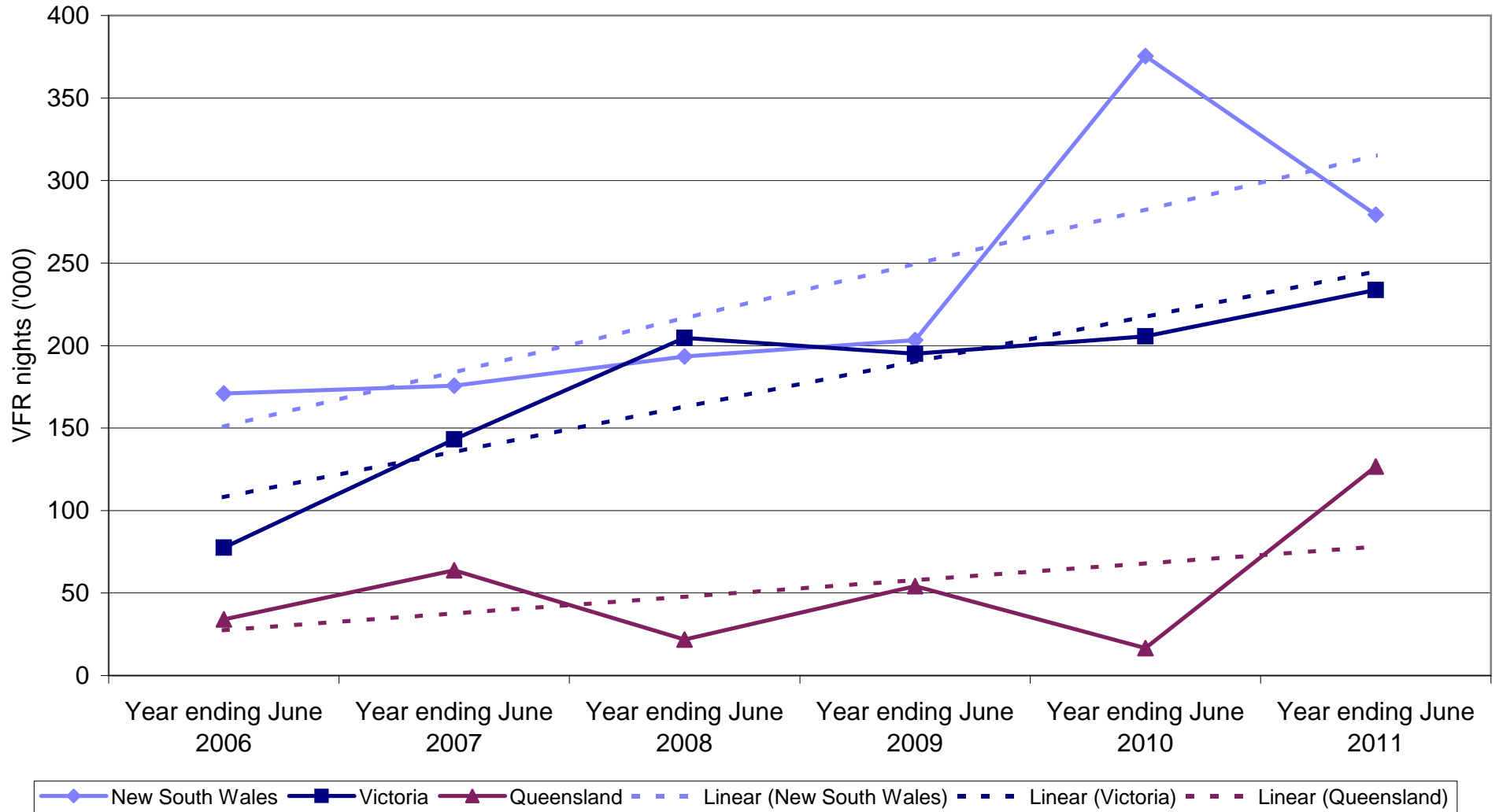
State market share of Indonesian holiday nights to Australia



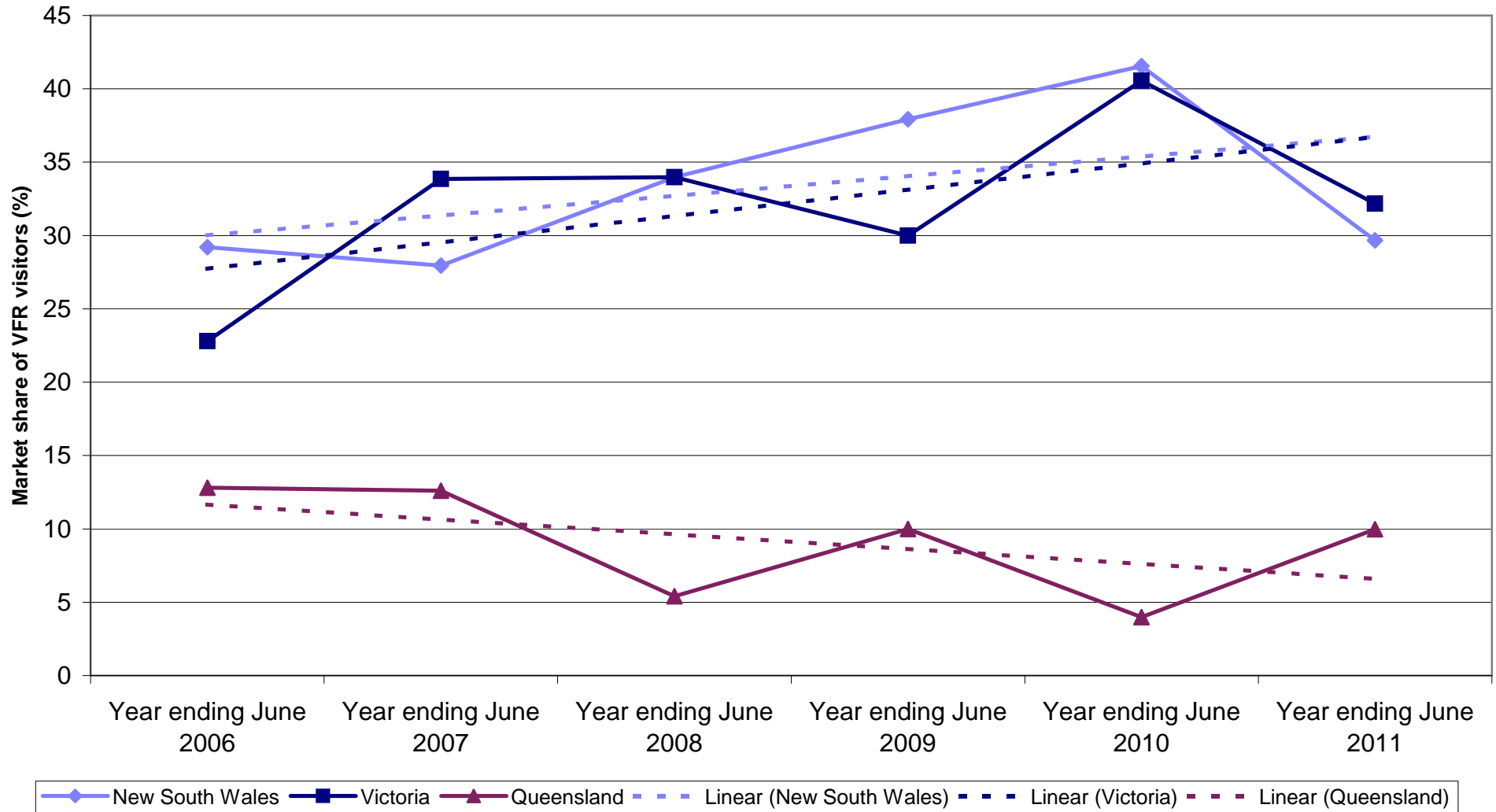
Indonesian VFR visitors by State visited



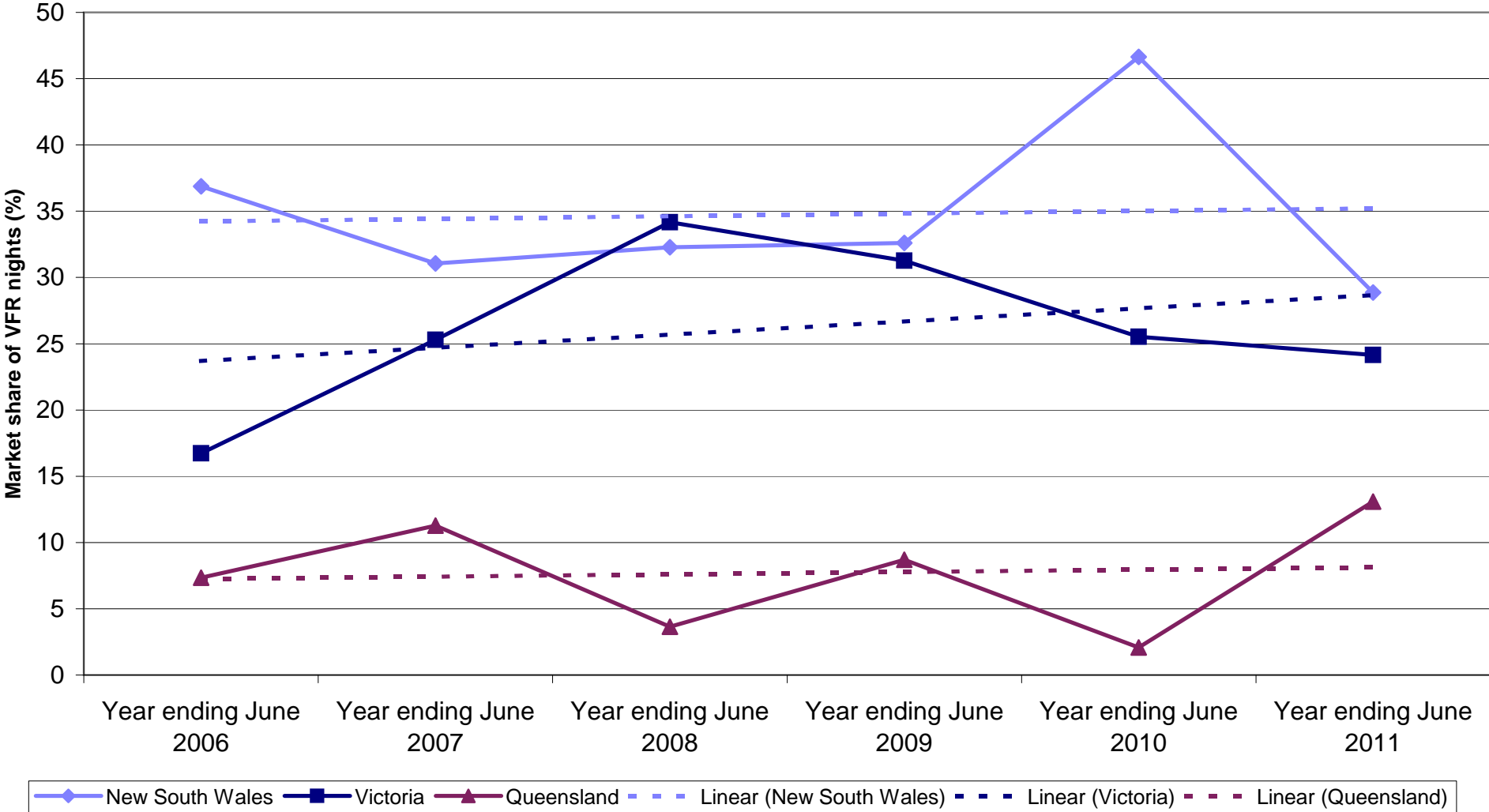
Indonesian VFR nights by State visited



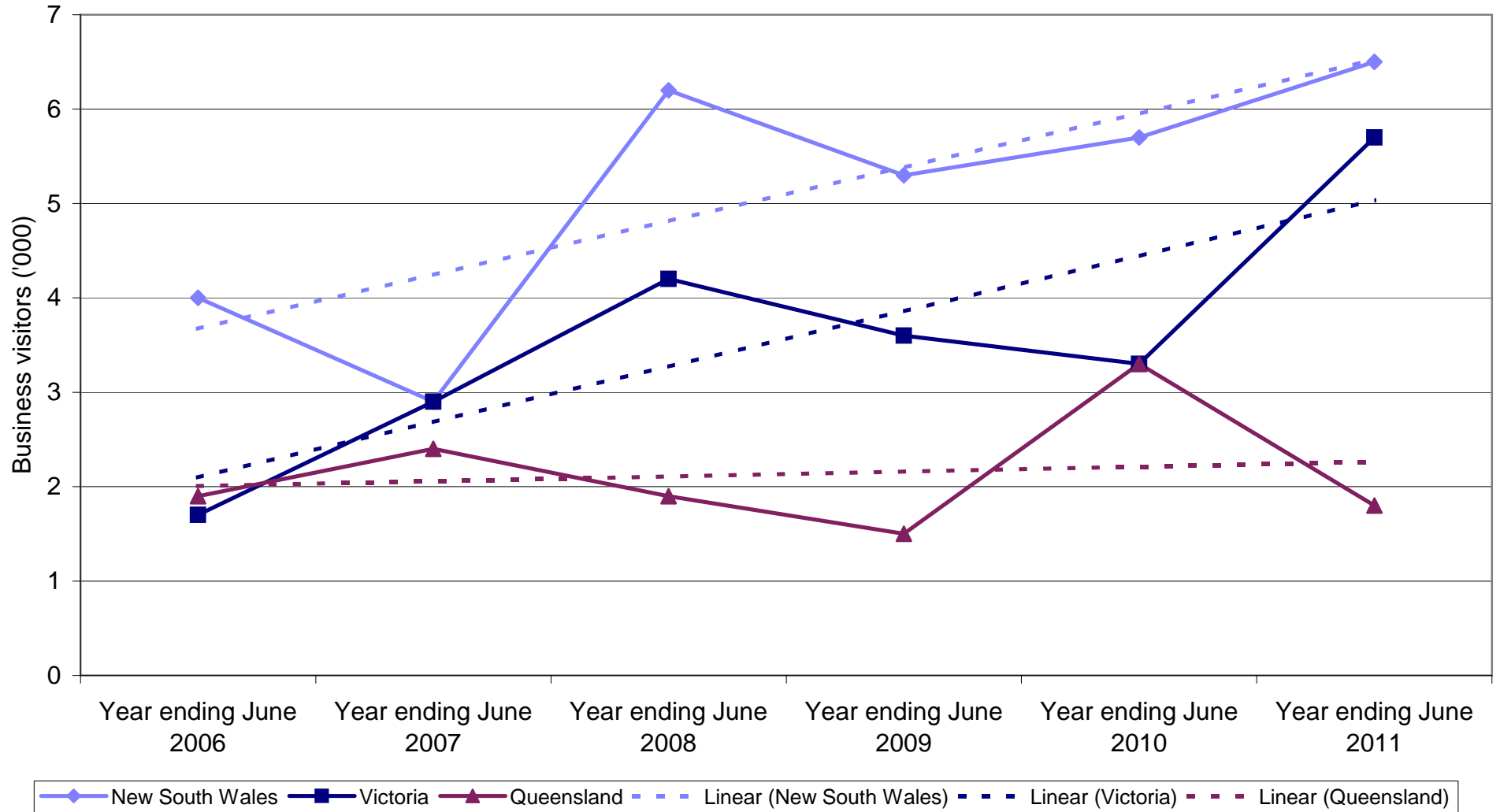
State market share of Indonesian VFR visitors to Australia



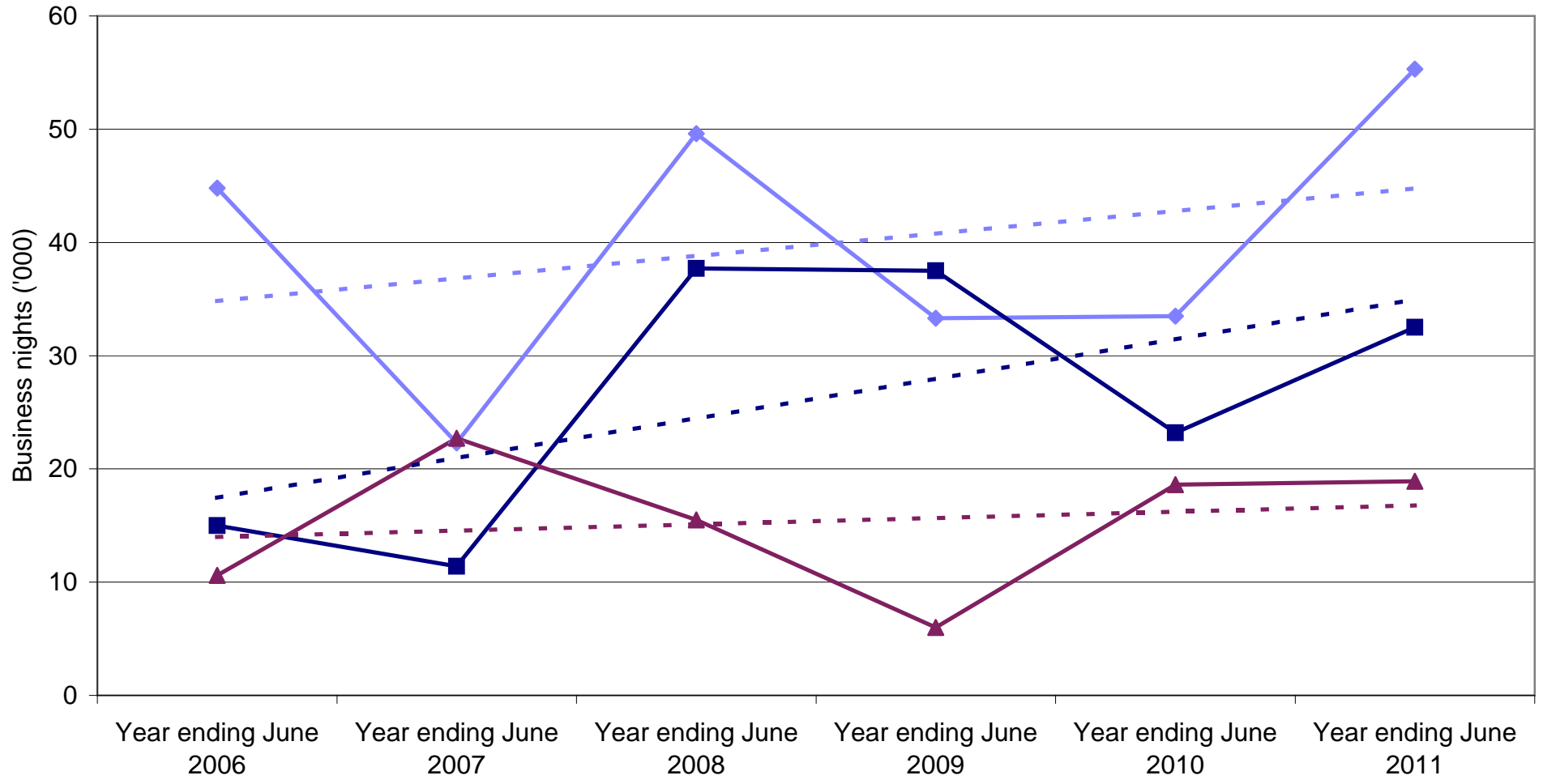
State market share of Indonesian VFR nights to Australia



Indonesian Business visitors by State visited

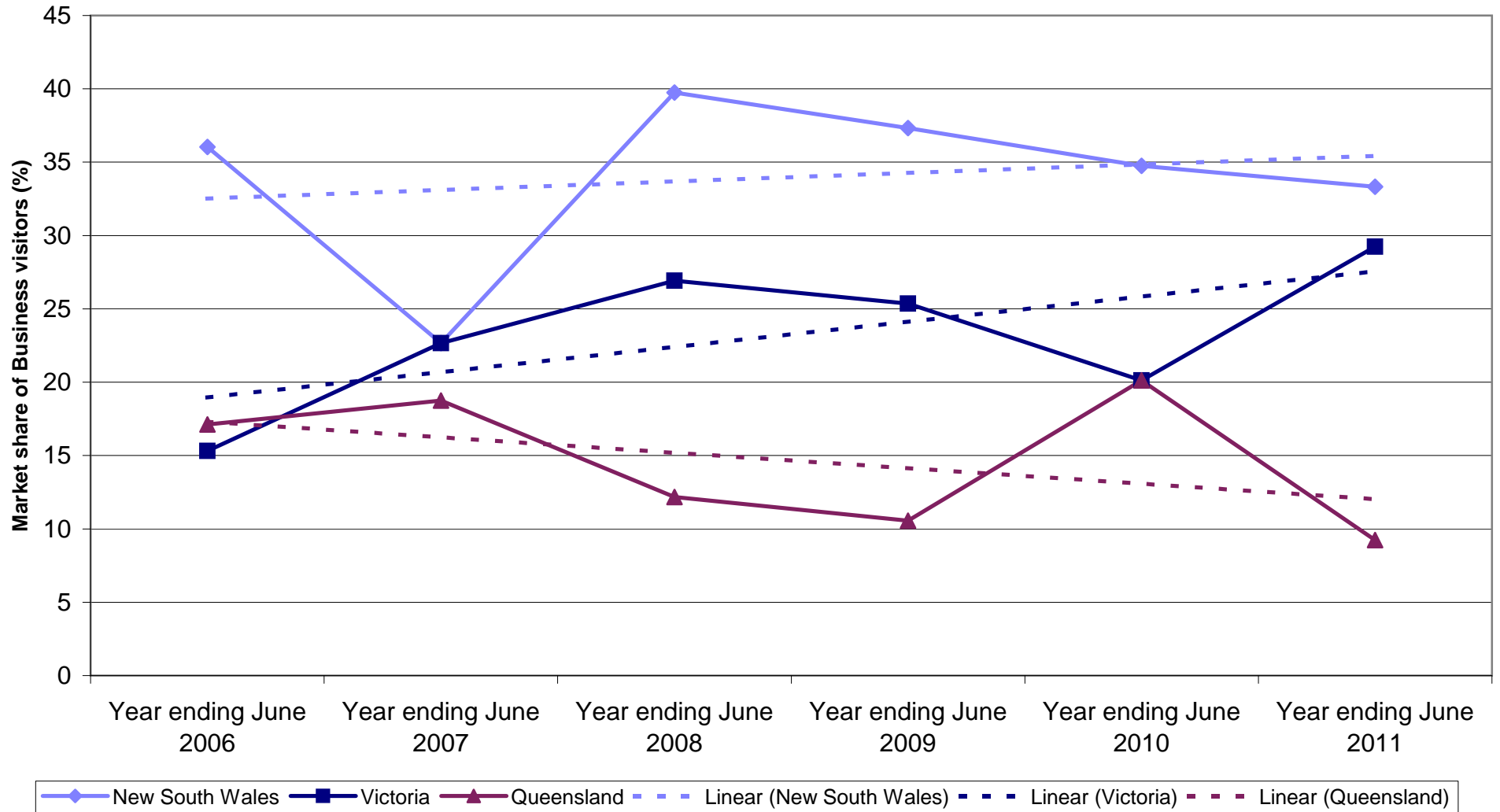


Indonesian Business nights by State visited

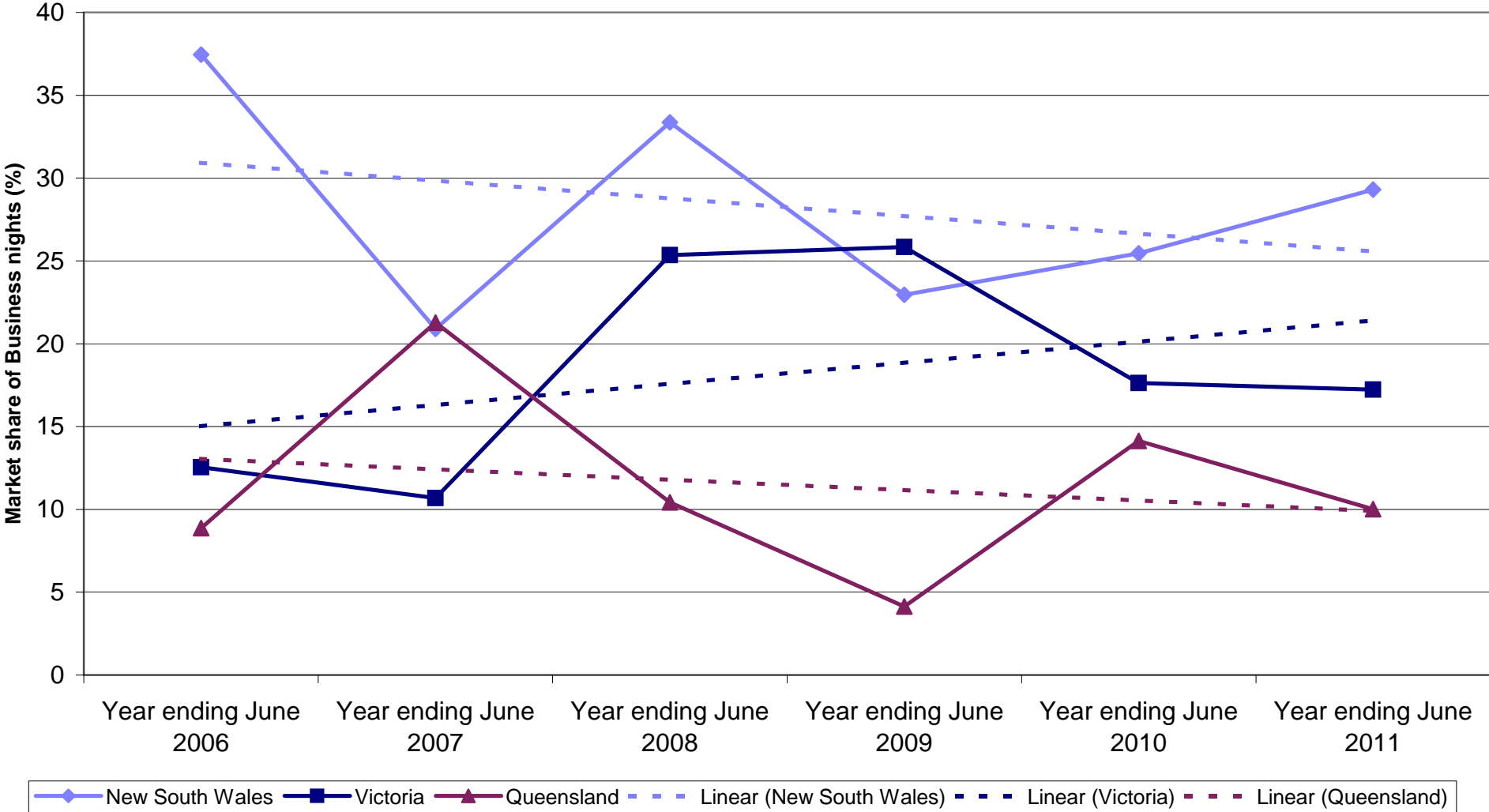


Legend: New South Wales (solid blue line with diamond markers), Victoria (solid dark blue line with square markers), Queensland (solid maroon line with triangle markers), Linear (New South Wales) (dashed light blue line), Linear (Victoria) (dashed dark blue line), Linear (Queensland) (dashed maroon line).

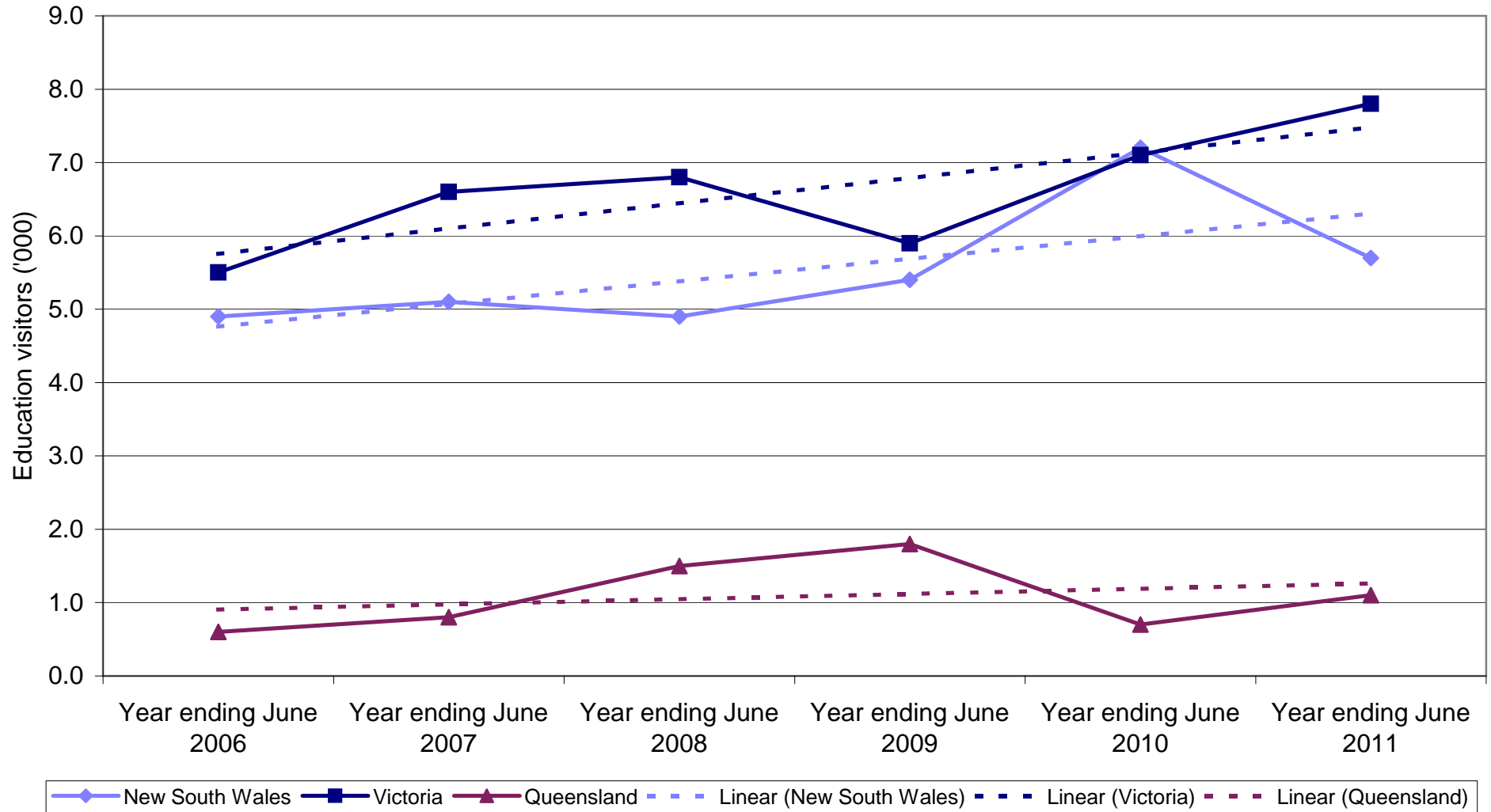
State market share of Indonesian Business visitors to Australia



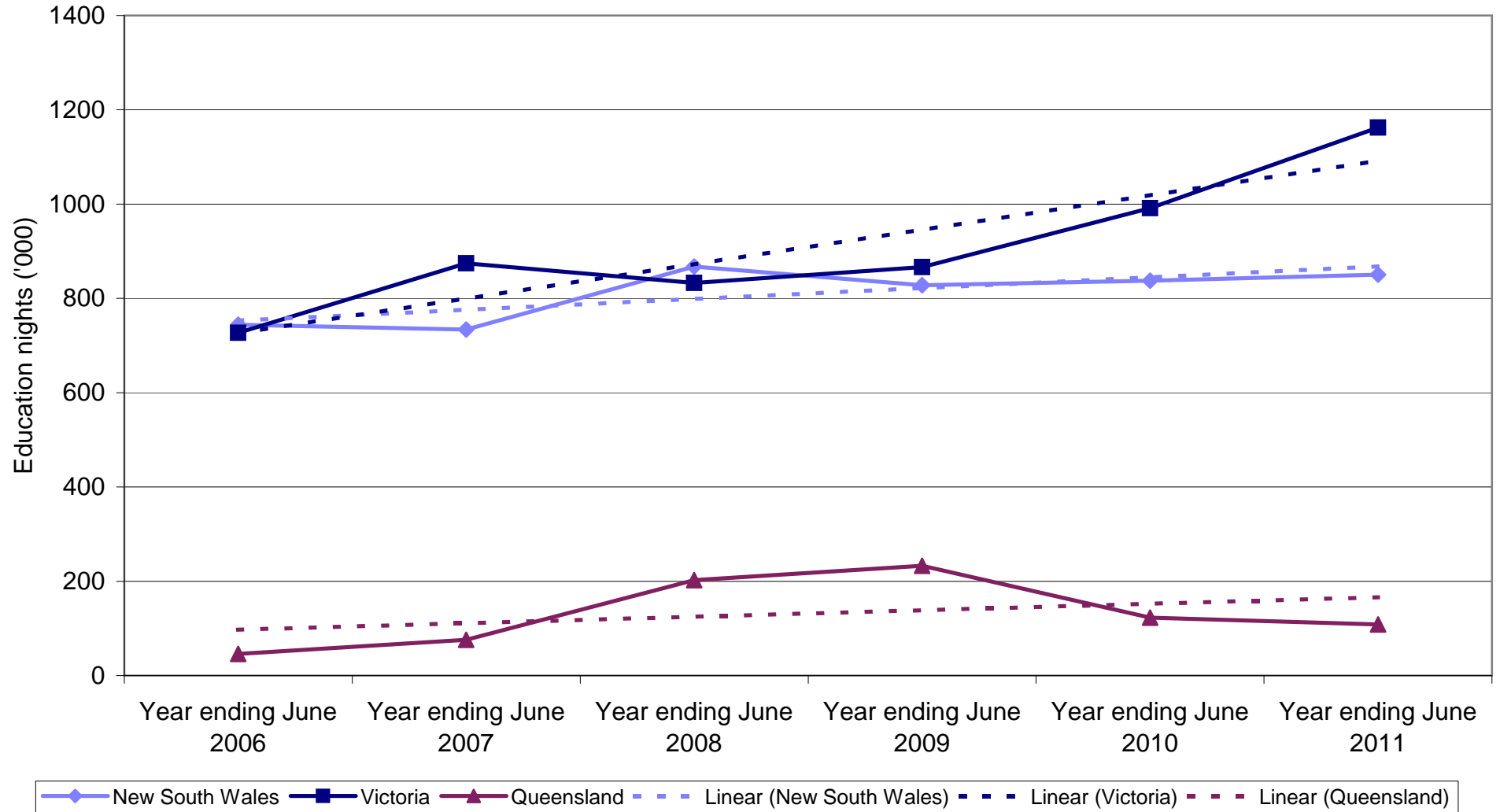
State market share of Indonesian Business nights to Australia



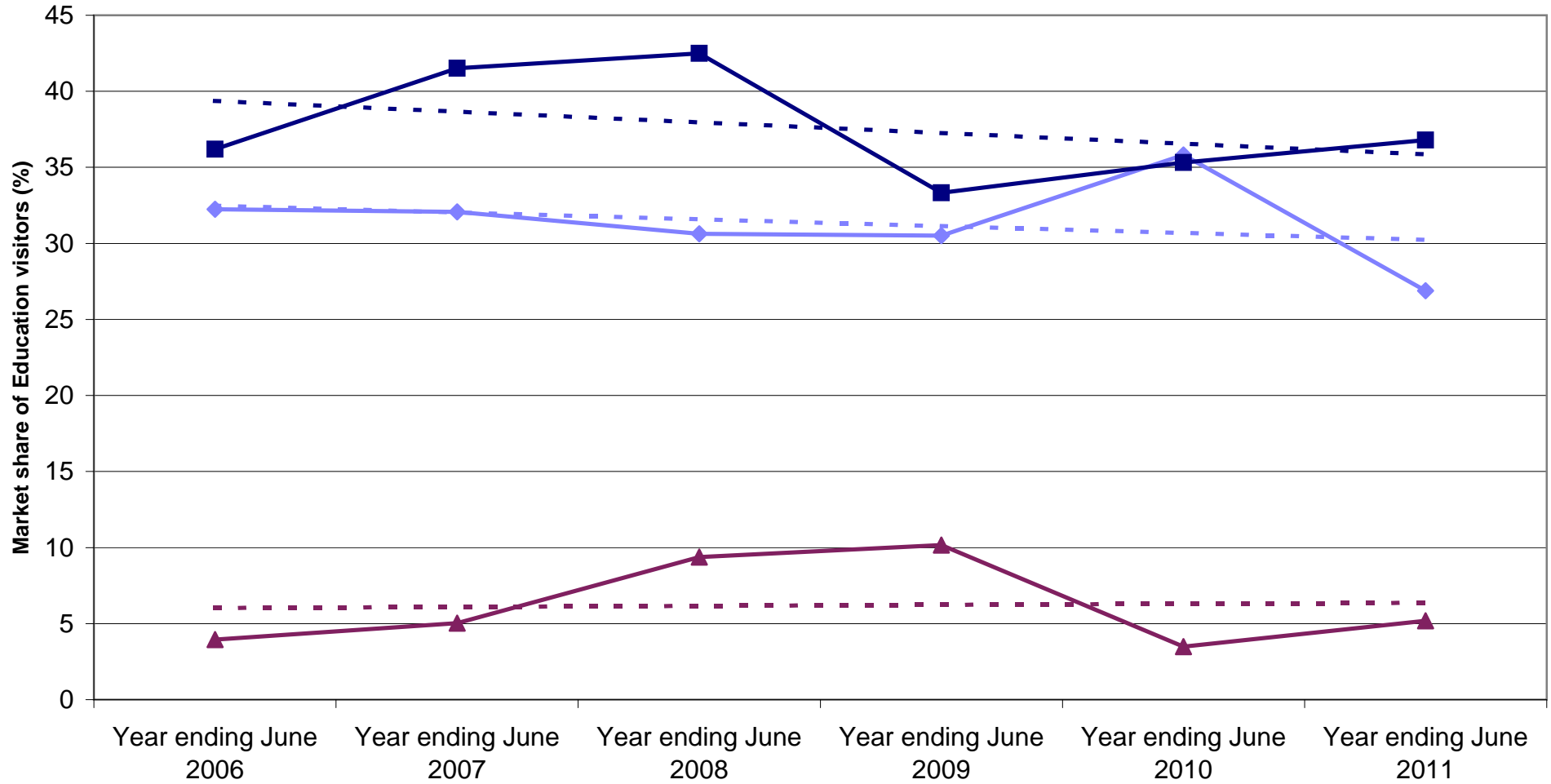
Indonesian Education visitors by State visited



Indonesian Education nights by State visited

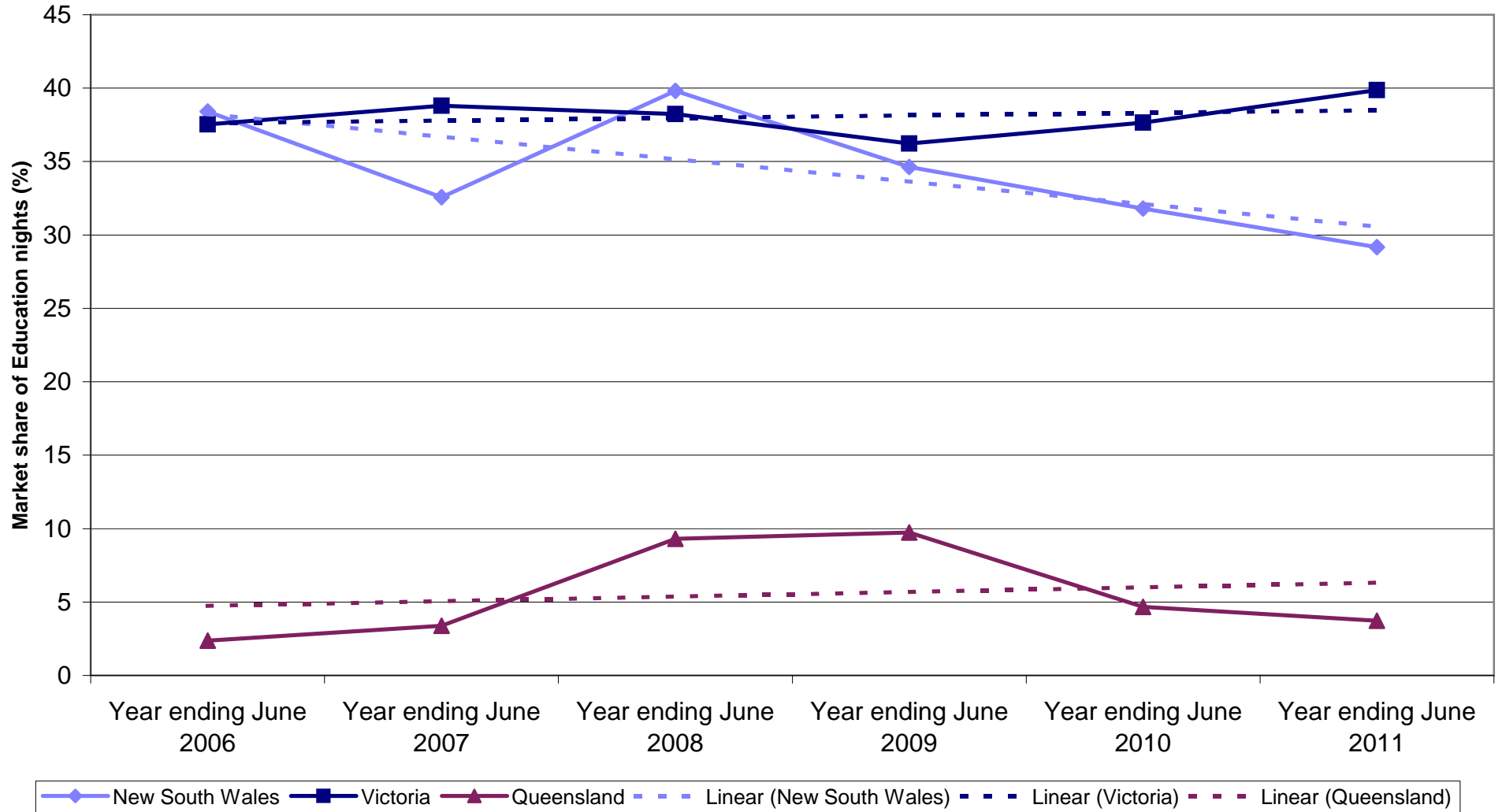


State market share of Indonesian Education visitors to Australia

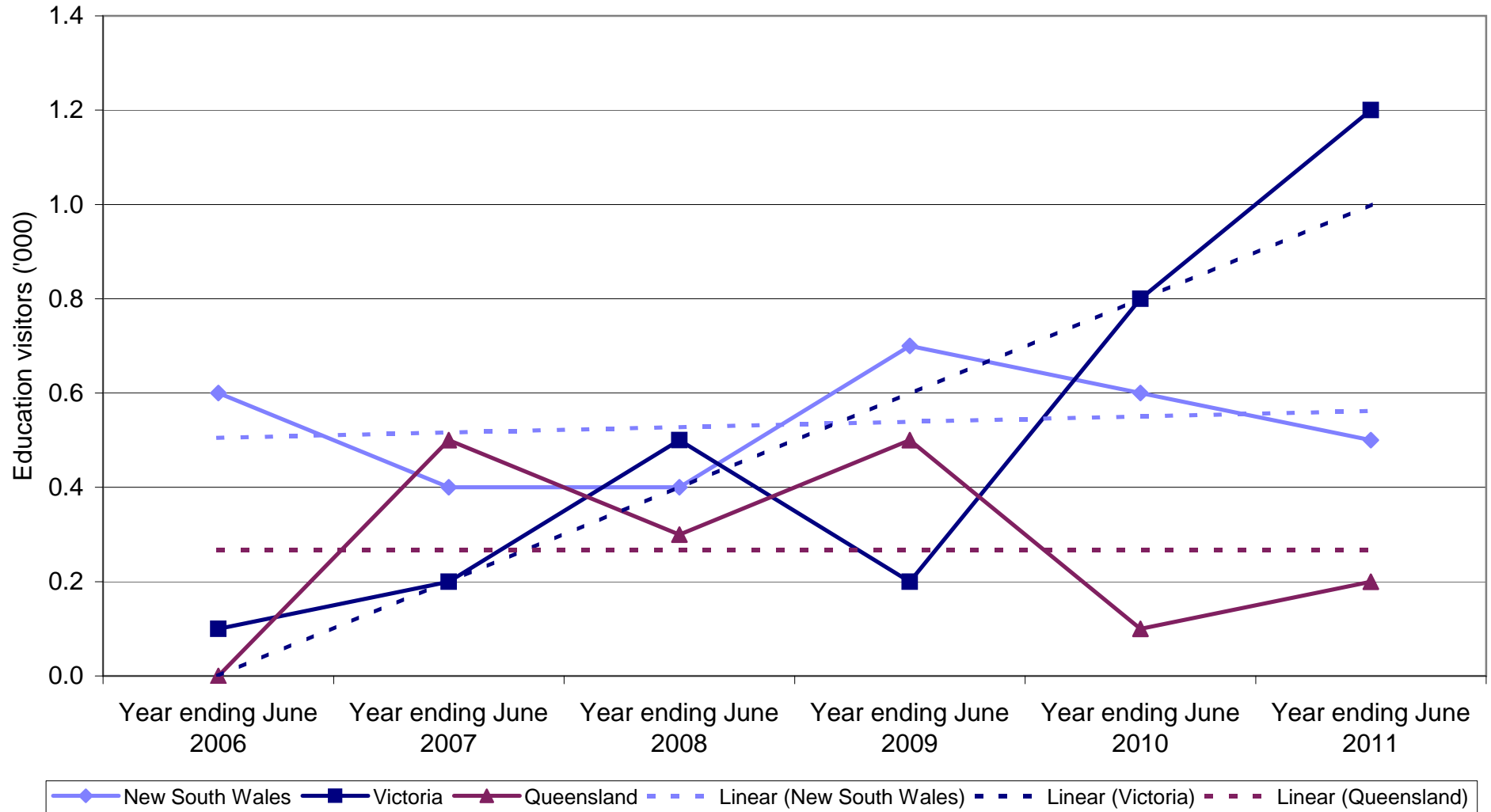


◆ New South Wales
 ■ Victoria
 ▲ Queensland
 - - - Linear (New South Wales)
 - - - Linear (Victoria)
 - - - Linear (Queensland)

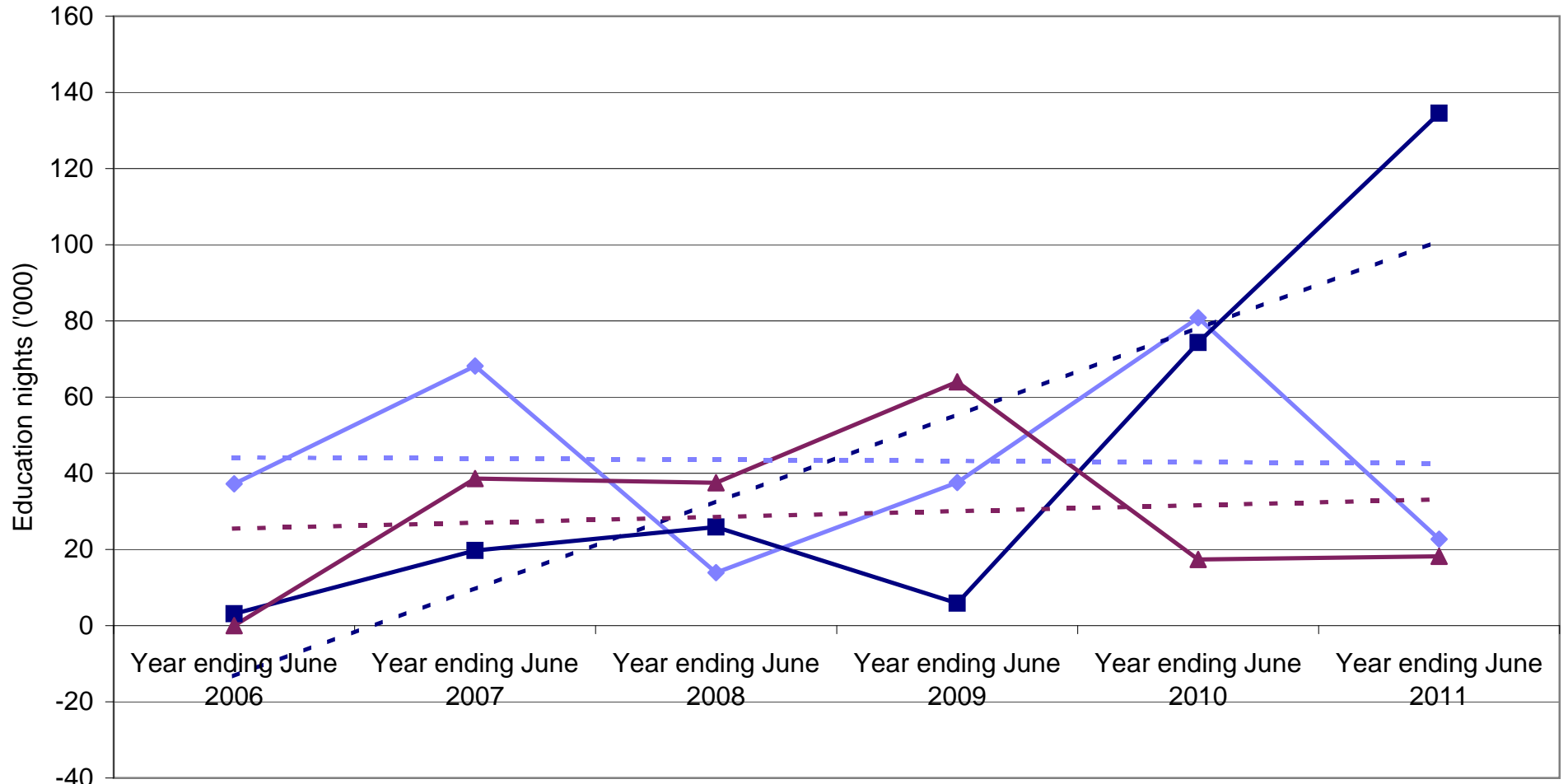
State market share of Indonesian Education nights to Australia



Indonesian Employment visitors by State visited

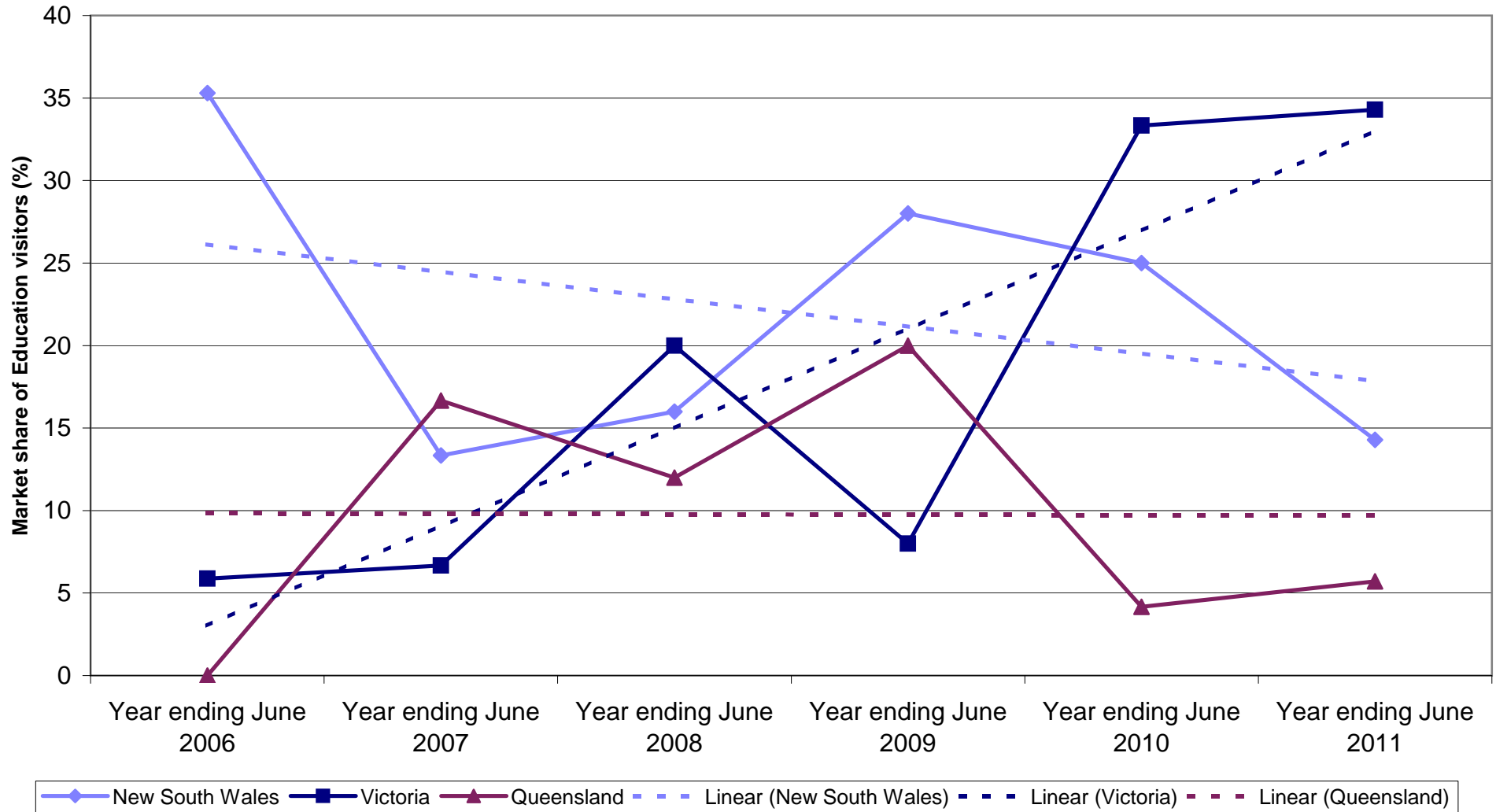


Indonesian Employment nights by State visited



◆ New South Wales
 ■ Victoria
 ▲ Queensland
 - - - Linear (New South Wales)
 - - - Linear (Victoria)
 - - - Linear (Queensland)

State market share of Indonesian Employment visitors to Australia



State market share of Indonesian Employment nights to Australia

