

## New Zealand - Times Series Year ending June 2006 - 2011

By stopover reason for visit

Holiday visitors ('000)	State visited	Year ending June 2006	Year ending June 2007	Year ending June 2008	Year ending June 2009	Year ending June 2010	Year ending June 2011
		New South Wales	119	139	131	120	136
	Victoria	83	95	97	80	83	86
	Queensland	263	267	259	240	237	212
	<b>Total</b>	<b>447</b>	<b>486</b>	<b>474</b>	<b>441</b>	<b>455</b>	<b>435</b>

Market share of holiday visitors (per cent)	State visited	Year ending June 2006	Year ending June 2007	Year ending June 2008	Year ending June 2009	Year ending June 2010	Year ending June 2011
		New South Wales	26.7	28.5	27.6	27.1	29.8
	Victoria	18.6	19.5	20.5	18.0	18.3	19.8
	Queensland	58.8	55.0	54.5	54.4	52.0	48.8

Holiday visitor nights ('000)	State visited	Year ending June 2006	Year ending June 2007	Year ending June 2008	Year ending June 2009	Year ending June 2010	Year ending June 2011
		New South Wales	955	1,099	1,030	896	1,052
	Victoria	771	677	642	528	423	457
	Queensland	2,701	3,060	2,764	2,574	2,234	2,206
	<b>Total</b>	<b>5,008</b>	<b>5,527</b>	<b>5,044</b>	<b>4,774</b>	<b>4,200</b>	<b>4,582</b>

Market share of holiday visitor nights (per cent)	State visited	Year ending June 2006	Year ending June 2007	Year ending June 2008	Year ending June 2009	Year ending June 2010	Year ending June 2011
		New South Wales	19.1	19.9	20.4	18.8	25.1
	Victoria	15.4	12.3	12.7	11.1	10.1	10.0
	Queensland	53.9	55.4	54.8	53.9	53.2	48.2

VFR visitors ('000)	State visited	Year ending June 2006	Year ending June 2007	Year ending June 2008	Year ending June 2009	Year ending June 2010	Year ending June 2011
		New South Wales	142	132	139	135	141
	Victoria	83	83	86	98	95	107
	Queensland	149	156	168	175	175	173
	<b>Total</b>	<b>388</b>	<b>385</b>	<b>403</b>	<b>425</b>	<b>435</b>	<b>457</b>

Market share of VFR visitors (per cent)	State visited	Year ending June 2006	Year ending June 2007	Year ending June 2008	Year ending June 2009	Year ending June 2010	Year ending June 2011
		New South Wales	36.6	34.4	34.5	31.8	32.5
	Victoria	21.5	21.7	21.4	23.0	21.8	23.4
	Queensland	38.3	40.5	41.6	41.2	40.1	37.8

VFR visitor nights ('000)	State visited	Year ending June 2006	Year ending June 2007	Year ending June 2008	Year ending June 2009	Year ending June 2010	Year ending June 2011
		New South Wales	1,473	1,289	1,277	1,329	1,395
	Victoria	794	747	700	866	897	856
	Queensland	1,577	1,647	1,637	1,568	1,810	1,875
	<b>Total</b>	<b>4,494</b>	<b>4,286</b>	<b>4,257</b>	<b>4,517</b>	<b>4,829</b>	<b>5,133</b>

Market share of VFR visitor nights (per cent)	State visited	Year ending June 2006	Year ending June 2007	Year ending June 2008	Year ending June 2009	Year ending June 2010	Year ending June 2011
		New South Wales	32.8	30.1	30.0	29.4	28.9
	Victoria	17.7	17.4	16.5	19.2	18.6	16.7
	Queensland	35.1	38.4	38.4	34.7	37.5	36.5

Source: International Visitor Survey.

Base: All visitors aged 15 years and over travel grid completed.

## New Zealand - Times Series Year ending June 2006 - 2011

Business visitors ('000)	State visited	Year ending June	Year ending June	Year ending June	Year ending June	Year ending June	Year ending June
		2006	2007	2008	2009	2010	2011
	New South Wales	98	101	101	98	95	100
	Victoria	59	63	57	55	61	68
	Queensland	45	44	53	40	39	45
	<b>Total</b>	<b>209</b>	<b>212</b>	<b>224</b>	<b>208</b>	<b>207</b>	<b>225</b>

Market share of business visitors (per cent)	State visited	Year ending June	Year ending June	Year ending June	Year ending June	Year ending June	Year ending June
		2006	2007	2008	2009	2010	2011
	New South Wales	47.1	47.7	45.0	47.2	45.8	44.4
	Victoria	28.4	29.7	25.2	26.7	29.6	30.2
	Queensland	21.5	20.6	23.5	19.3	18.7	19.9

Business visitor nights ('000)	State visited	Year ending June	Year ending June	Year ending June	Year ending June	Year ending June	Year ending June
		2006	2007	2008	2009	2010	2011
	New South Wales	528	651	521	480	475	480
	Victoria	286	290	266	275	336	315
	Queensland	276	241	311	198	251	258
	<b>Total</b>	<b>1,312</b>	<b>1,347</b>	<b>1,339</b>	<b>1,291</b>	<b>1,393</b>	<b>1,397</b>

Market share of business visitor nights (per cent)	State visited	Year ending June	Year ending June	Year ending June	Year ending June	Year ending June	Year ending June
		2006	2007	2008	2009	2010	2011
	New South Wales	40.2	48.3	38.9	37.1	34.1	34.4
	Victoria	21.8	21.6	19.9	21.3	24.1	22.5
	Queensland	21.0	17.9	23.2	15.3	18.0	18.5

Education visitors ('000)	State visited	Year ending June	Year ending June	Year ending June	Year ending June	Year ending June	Year ending June
		2006	2007	2008	2009	2010	2011
	New South Wales	3.5	6.6	7.5	5.7	7.2	6.7
	Victoria	3.0	3.9	4.8	4.0	4.7	4.8
	Queensland	0.8	2.8	5.0	3.7	4.0	3.7
	<b>Total</b>	<b>8.4</b>	<b>16.2</b>	<b>20.8</b>	<b>16.0</b>	<b>17.9</b>	<b>17.8</b>

Market share of Education visitors (per cent)	State visited	Year ending June	Year ending June	Year ending June	Year ending June	Year ending June	Year ending June
		2006	2007	2008	2009	2010	2011
	New South Wales	41.7	40.7	36.1	35.6	40.2	37.6
	Victoria	35.7	24.1	23.1	25.0	26.3	27.0
	Queensland	9.5	17.3	24.0	23.1	22.3	20.8

Education visitor nights ('000)	State visited	Year ending June	Year ending June	Year ending June	Year ending June	Year ending June	Year ending June
		2006	2007	2008	2009	2010	2011
	New South Wales	150	260	357	234	294	168
	Victoria	58	118	173	133	151	187
	Queensland	7	57	168	113	127	147
	<b>Total</b>	<b>260</b>	<b>616</b>	<b>790</b>	<b>578</b>	<b>616</b>	<b>642</b>

Market share of Education visitor nights (per cent)	State visited	Year ending June	Year ending June	Year ending June	Year ending June	Year ending June	Year ending June
		2006	2007	2008	2009	2010	2011
	New South Wales	57.7	42.2	45.2	40.4	47.8	26.1
	Victoria	22.3	19.2	21.9	23.0	24.5	29.1
	Queensland	2.7	9.3	21.2	19.5	20.6	22.9

Employment visitors ('000)	State visited	Year ending June	Year ending June	Year ending June	Year ending June	Year ending June	Year ending June
		2006	2007	2008	2009	2010	2011
	New South Wales	12.2	9.4	10.0	7.7	8.6	15.1
	Victoria	9.4	6.7	6.1	4.3	5.7	8.6
	Queensland	4.8	6.8	8.2	11.3	7.3	9.9
	<b>Total</b>	<b>31.3</b>	<b>31.8</b>	<b>33.9</b>	<b>35.5</b>	<b>32.0</b>	<b>44.1</b>

Market share of Employment visitors (per cent)	State visited	Year ending June	Year ending June	Year ending June	Year ending June	Year ending June	Year ending June
		2006	2007	2008	2009	2010	2011
	New South Wales	39.0	29.6	29.5	21.7	26.9	34.2
	Victoria	30.0	21.1	18.0	12.1	17.8	19.5
	Queensland	15.3	21.4	24.2	31.8	22.8	22.4



## New Zealand - Times Series Year ending June 2006 - 2011

		Year ending June 2006	Year ending June 2007	Year ending June 2008	Year ending June 2009	Year ending June 2010	Year ending June 2011
<b>Employment visitor nights (’000)</b>	<b>State visited</b>						
	New South Wales	1,219	553	427	466	503	810
	Victoria	896	389	565	301	305	540
	Queensland	259	349	637	894	387	634
	<b>Total</b>	2,922	2,135	2,368	2,633	1,926	2,937

		Year ending June 2006	Year ending June 2007	Year ending June 2008	Year ending June 2009	Year ending June 2010	Year ending June 2011
<b>Market share of Employment visitor nights (per cent)</b>	<b>State visited</b>						
	New South Wales	41.7	25.9	18.0	17.7	26.1	27.6
	Victoria	30.7	18.2	23.8	11.4	15.8	18.4
	Queensland	8.9	16.4	26.9	34.0	20.1	21.6

		Year ending June 2006	Year ending June 2007	Year ending June 2008	Year ending June 2009	Year ending June 2010	Year ending June 2011
<b>Total visitors (’000)</b>	<b>State visited</b>						
	New South Wales	368.9	368.0	370.4	352.2	367.5	395.1
	Victoria	229.9	235.7	234.1	225.1	237.2	259.8
	Queensland	403.1	421.8	423.8	404.7	395.4	403.7
	<b>Total</b>	980.0	1,001.5	1,014.4	998.8	1,020.7	1,073.0

		Year ending June 2006	Year ending June 2007	Year ending June 2008	Year ending June 2009	Year ending June 2010	Year ending June 2011
<b>Market share of total visitors (per cent)</b>	<b>State visited</b>						
	New South Wales	37.6	36.7	36.5	35.3	36.0	36.8
	Victoria	23.5	23.5	23.1	22.5	23.2	24.2
	Queensland	41.1	42.1	41.8	40.5	38.7	37.6

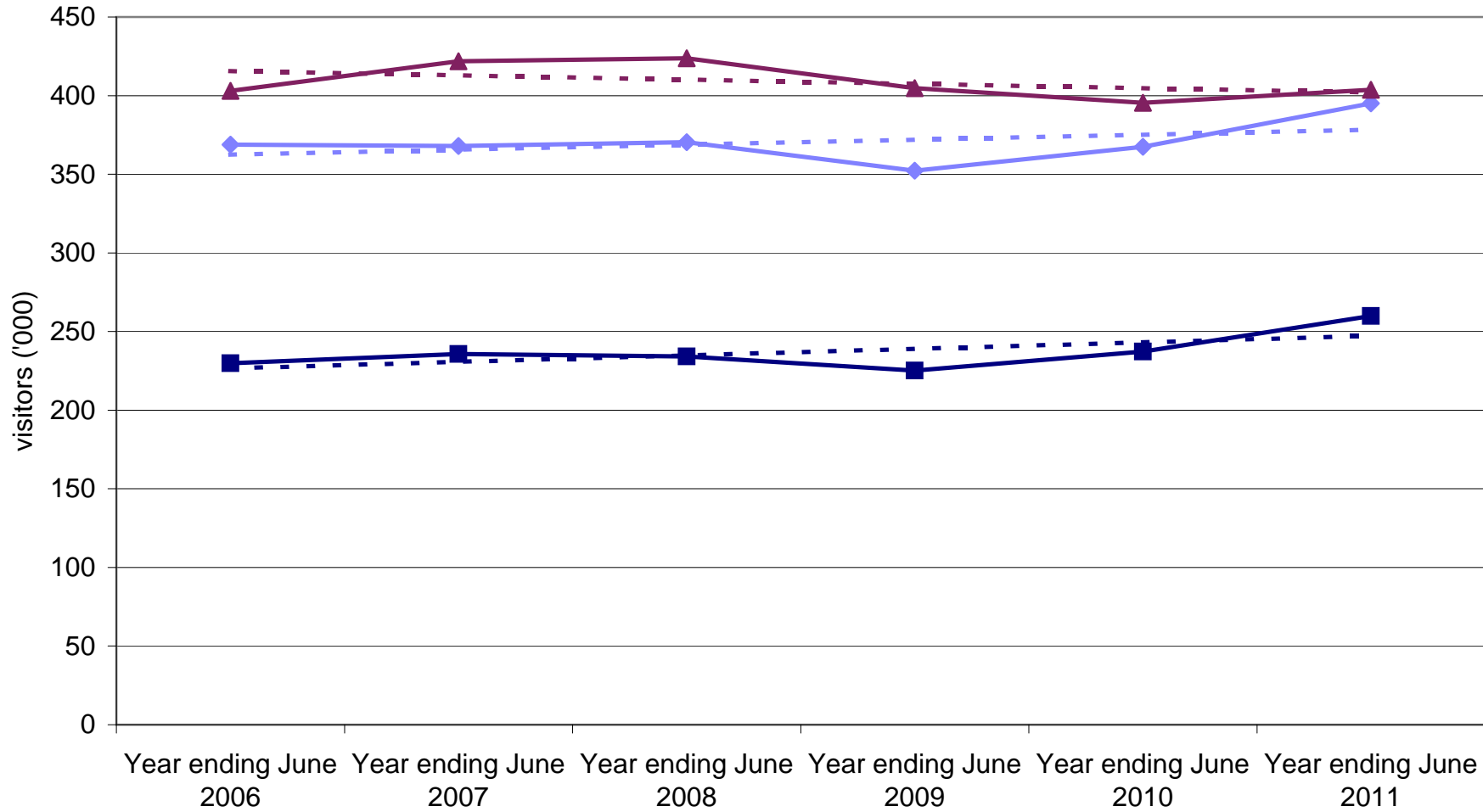
		Year ending June 2006	Year ending June 2007	Year ending June 2008	Year ending June 2009	Year ending June 2010	Year ending June 2011
<b>Total visitor nights (’000)</b>	<b>State visited</b>						
	New South Wales	4,398	3,913	3,640	3,448	3,737	4,262
	Victoria	2,863	2,276	2,383	2,114	2,134	2,370
	Queensland	4,885	5,380	5,574	5,361	4,846	5,168
	<b>Total</b>	14,262	14,085	13,971	13,926	13,105	14,855

		Year ending June 2006	Year ending June 2007	Year ending June 2008	Year ending June 2009	Year ending June 2010	Year ending June 2011
<b>Market share of total visitor nights (per cent)</b>	<b>State visited</b>						
	New South Wales	30.8	27.8	26.1	24.8	28.5	28.7
	Victoria	20.1	16.2	17.1	15.2	16.3	16.0
	Queensland	34.3	38.2	39.9	38.5	37.0	34.8

Source: International Visitor Survey.

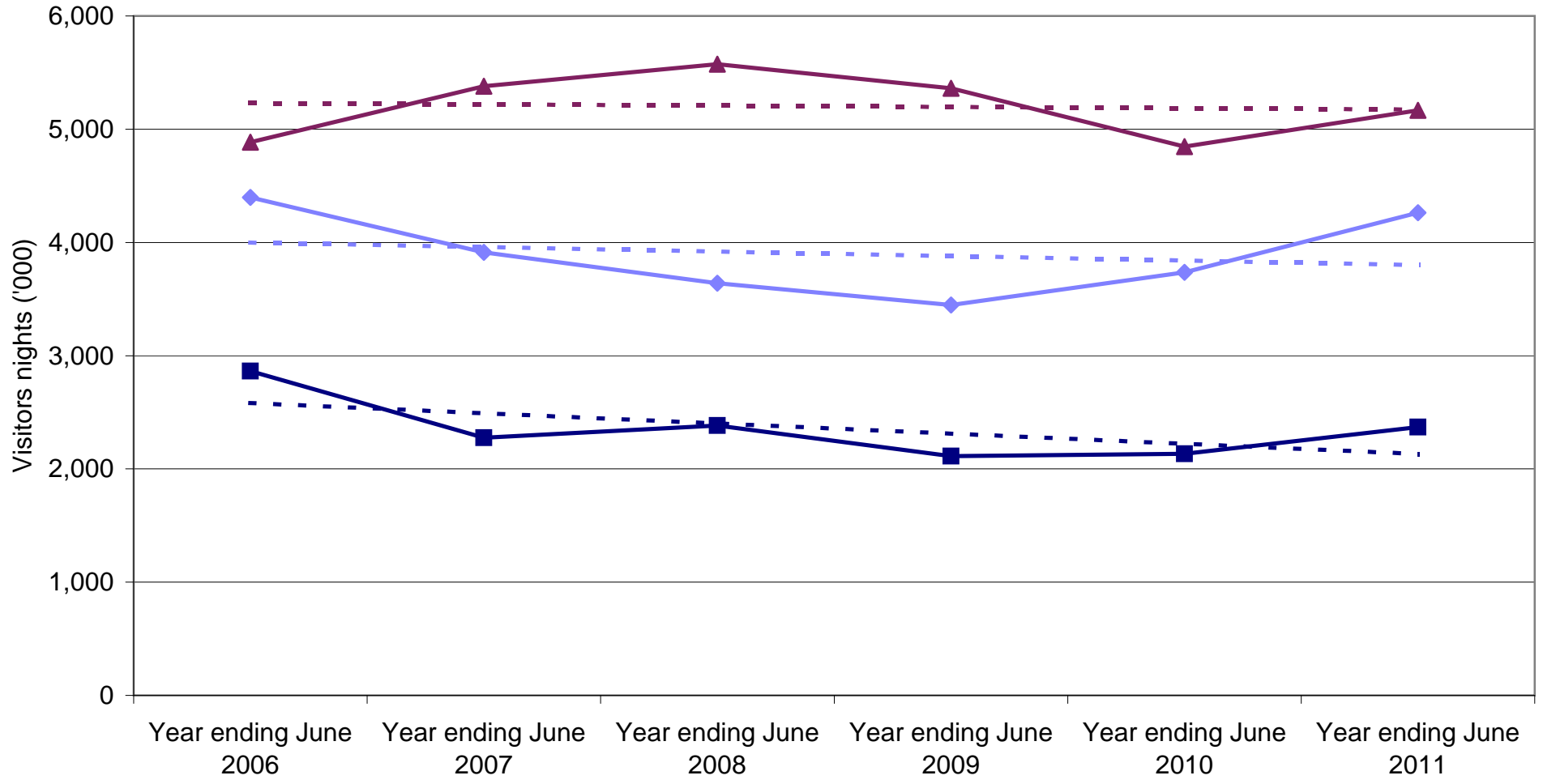
Base: All visitors aged 15 years and over travel grid completed.

### New Zealand visitors by State visited



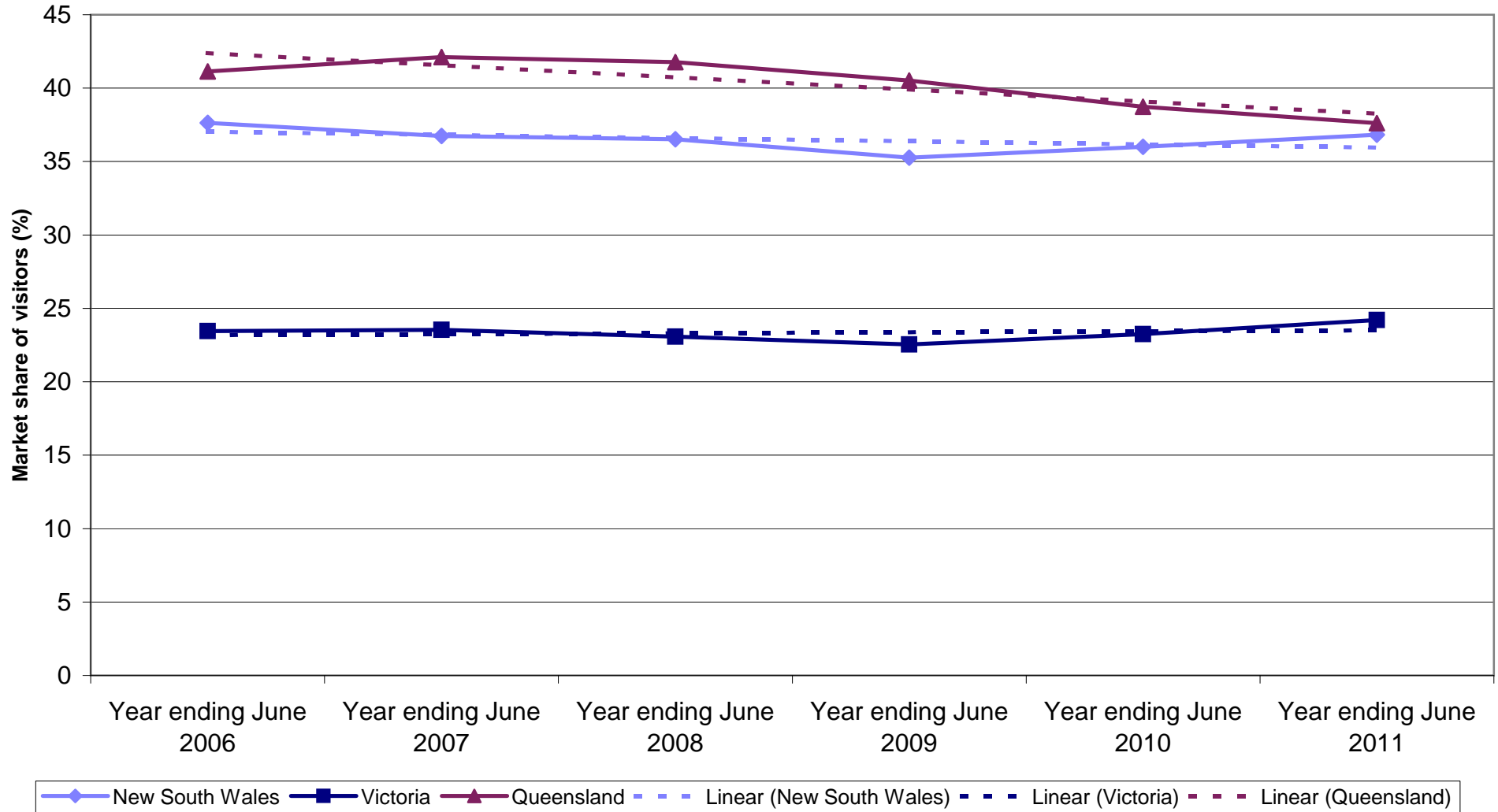
◆ New South Wales 
 ■ Victoria 
 ▲ Queensland 
 - - Linear (New South Wales) 
 - - Linear (Victoria) 
 - - Linear (Queensland)

### New Zealand nights by State visited

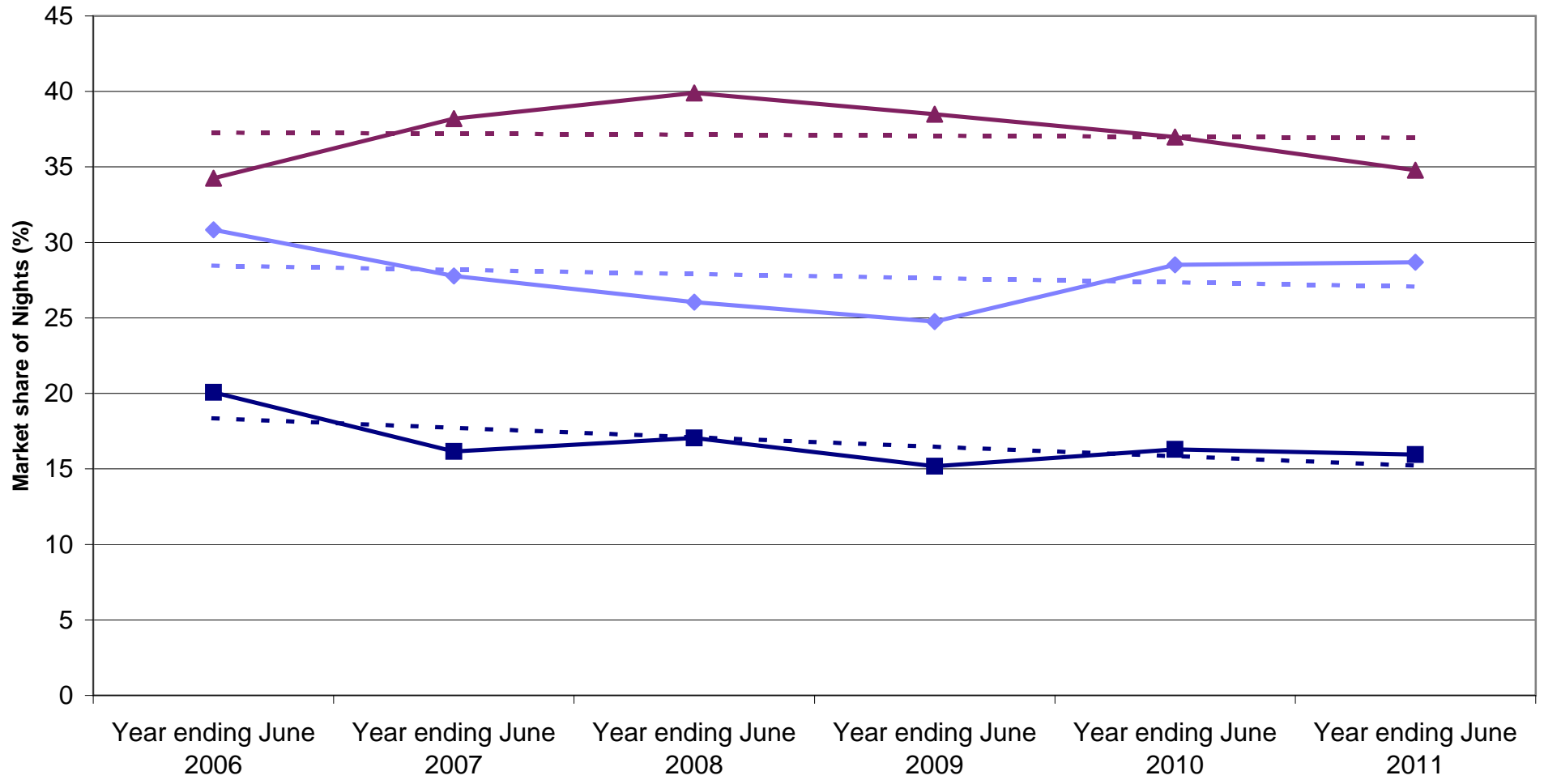


Legend: New South Wales (solid line with diamond markers), Victoria (solid line with square markers), Queensland (solid line with triangle markers), Linear (New South Wales) (dashed line), Linear (Victoria) (dashed line), Linear (Queensland) (dashed line).

### State market share of New Zealand visitors to Australia

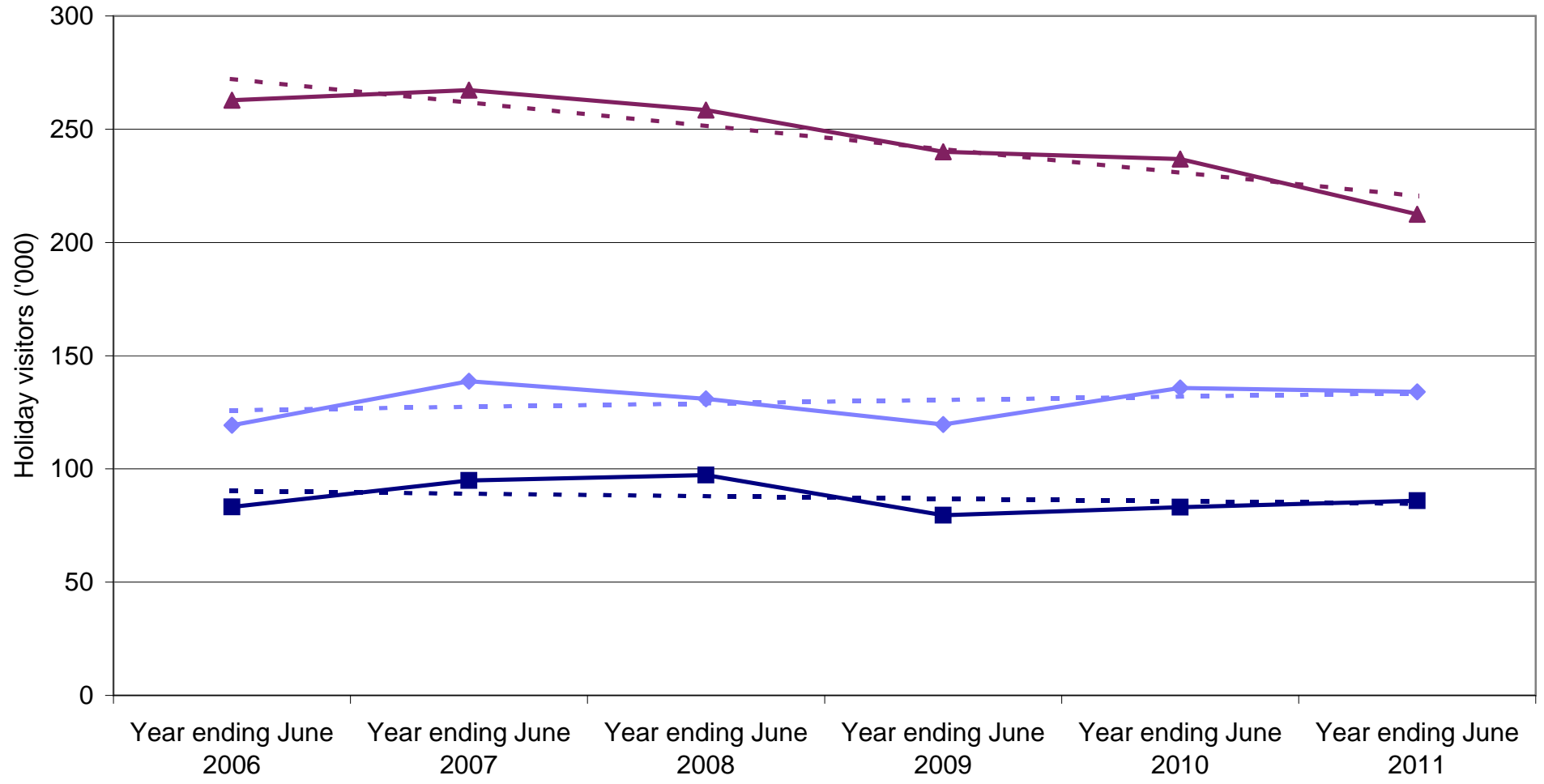


### State market share of New Zealand nights to Australia



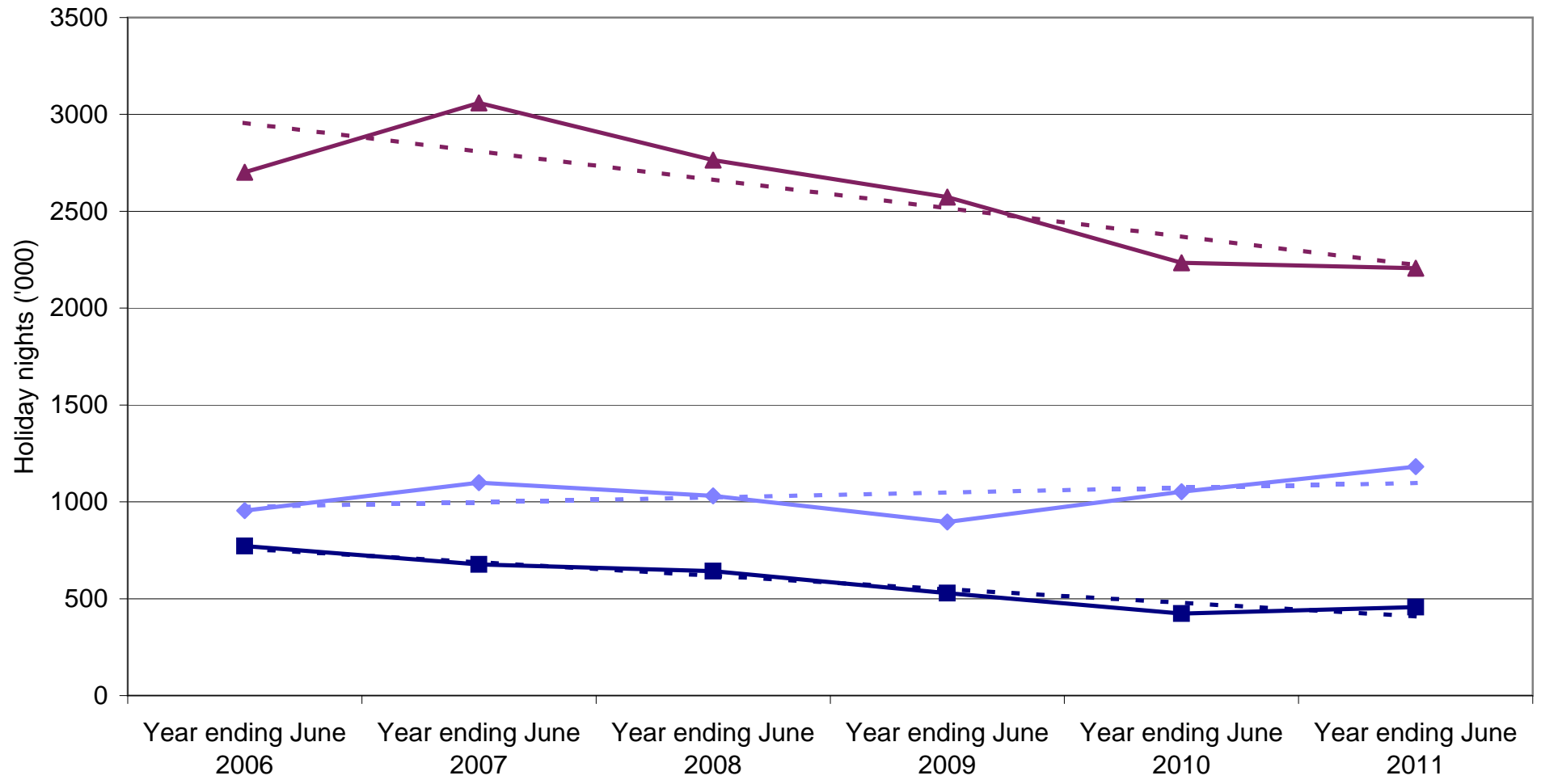
Legend: New South Wales (solid blue line with diamond markers), Victoria (solid dark blue line with square markers), Queensland (solid maroon line with triangle markers), Linear (New South Wales) (dashed blue line), Linear (Victoria) (dashed dark blue line), Linear (Queensland) (dashed maroon line).

### New Zealand holiday visitors by State visited



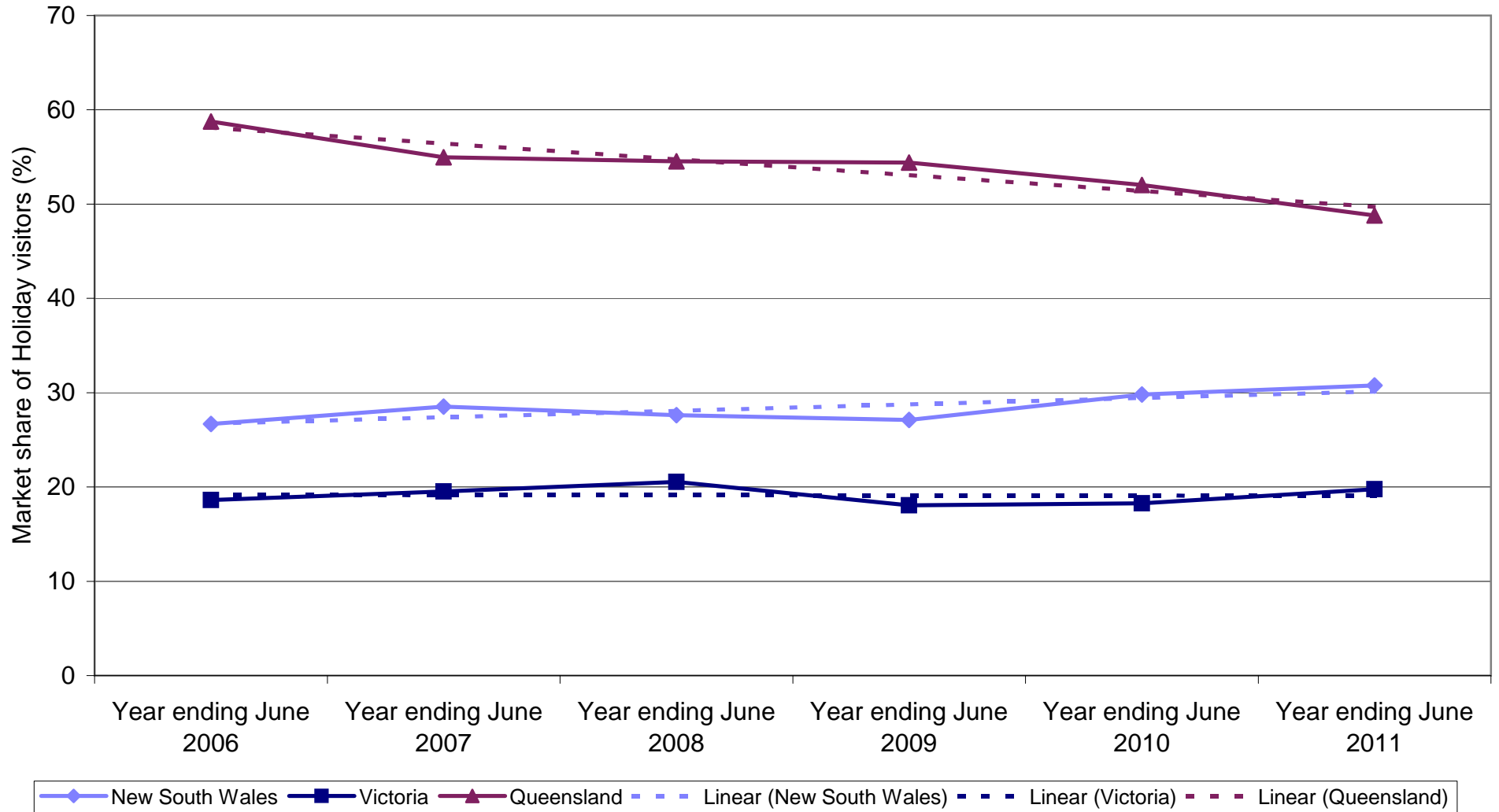
Legend: New South Wales (solid blue line with diamond markers), Victoria (solid dark blue line with square markers), Queensland (solid maroon line with triangle markers), Linear (New South Wales) (dashed light blue line), Linear (Victoria) (dashed dark blue line), Linear (Queensland) (dashed maroon line).

### New Zealand holiday nights by State visited

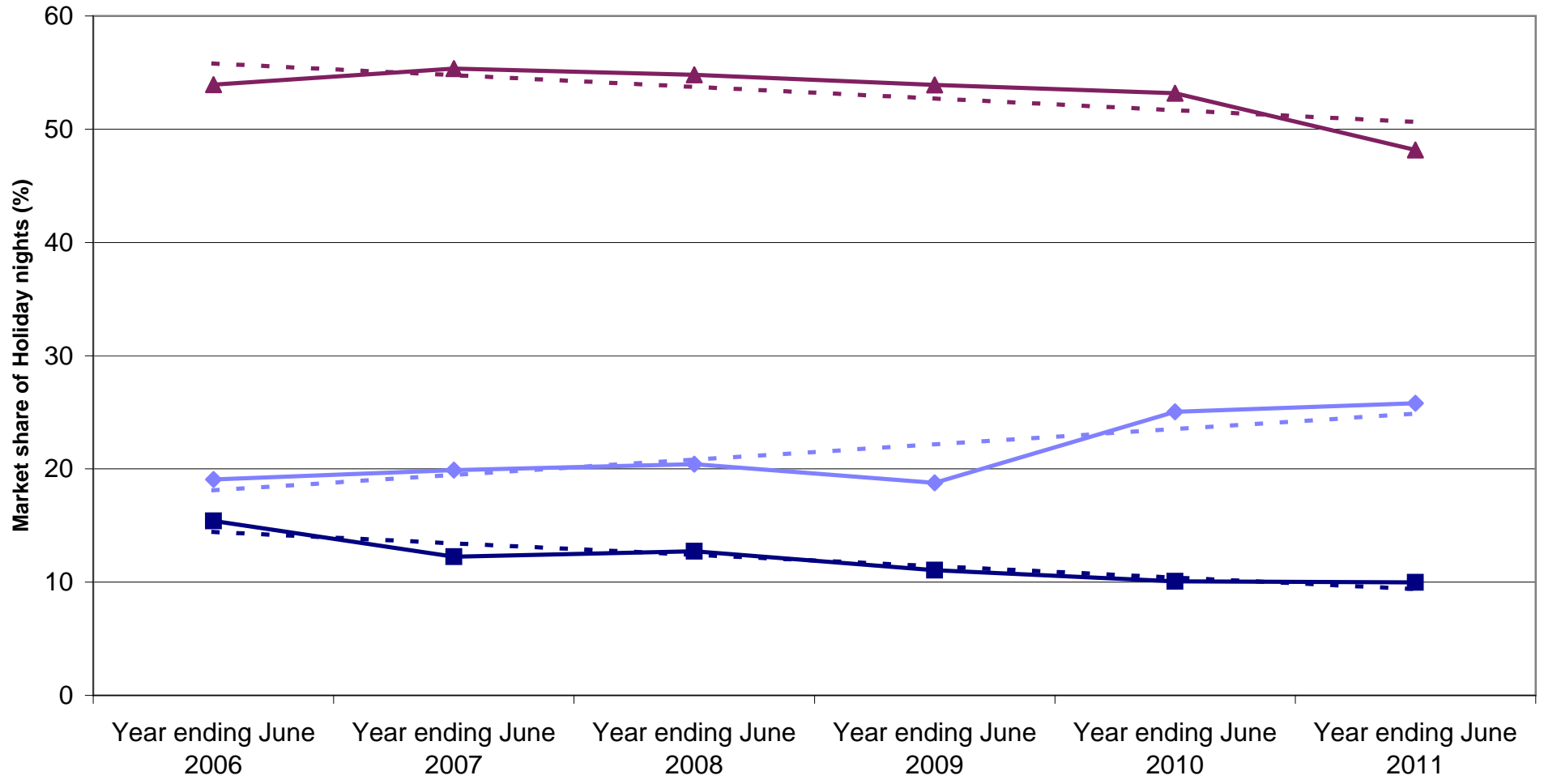


◆ New South Wales 
 ■ Victoria 
 ▲ Queensland 
 - - - Linear (New South Wales) 
 - - - Linear (Victoria) 
 - - - Linear (Queensland)

### State market share of New Zealand holiday visitors to Australia

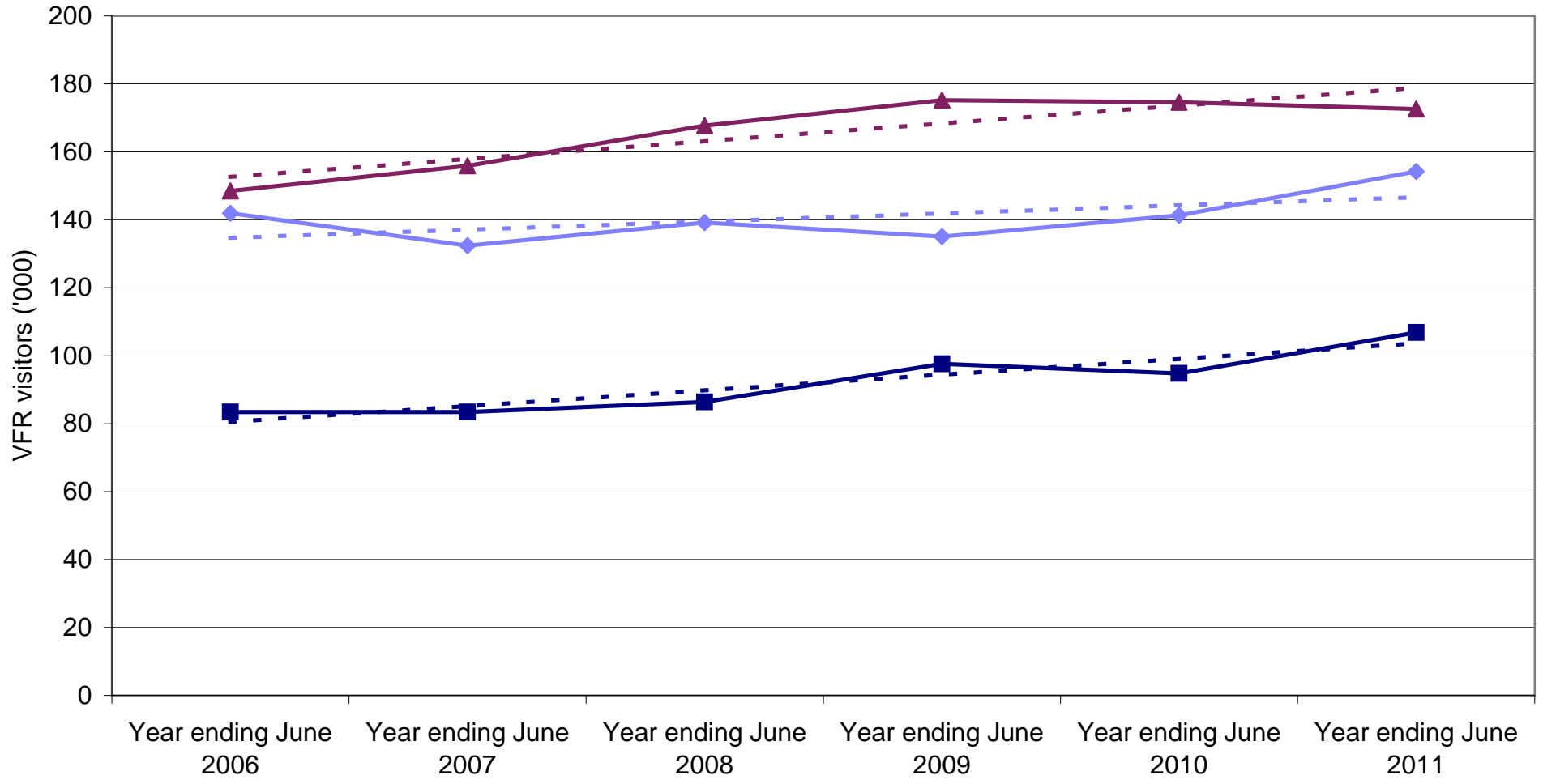


### State market share of New Zealand holiday nights to Australia



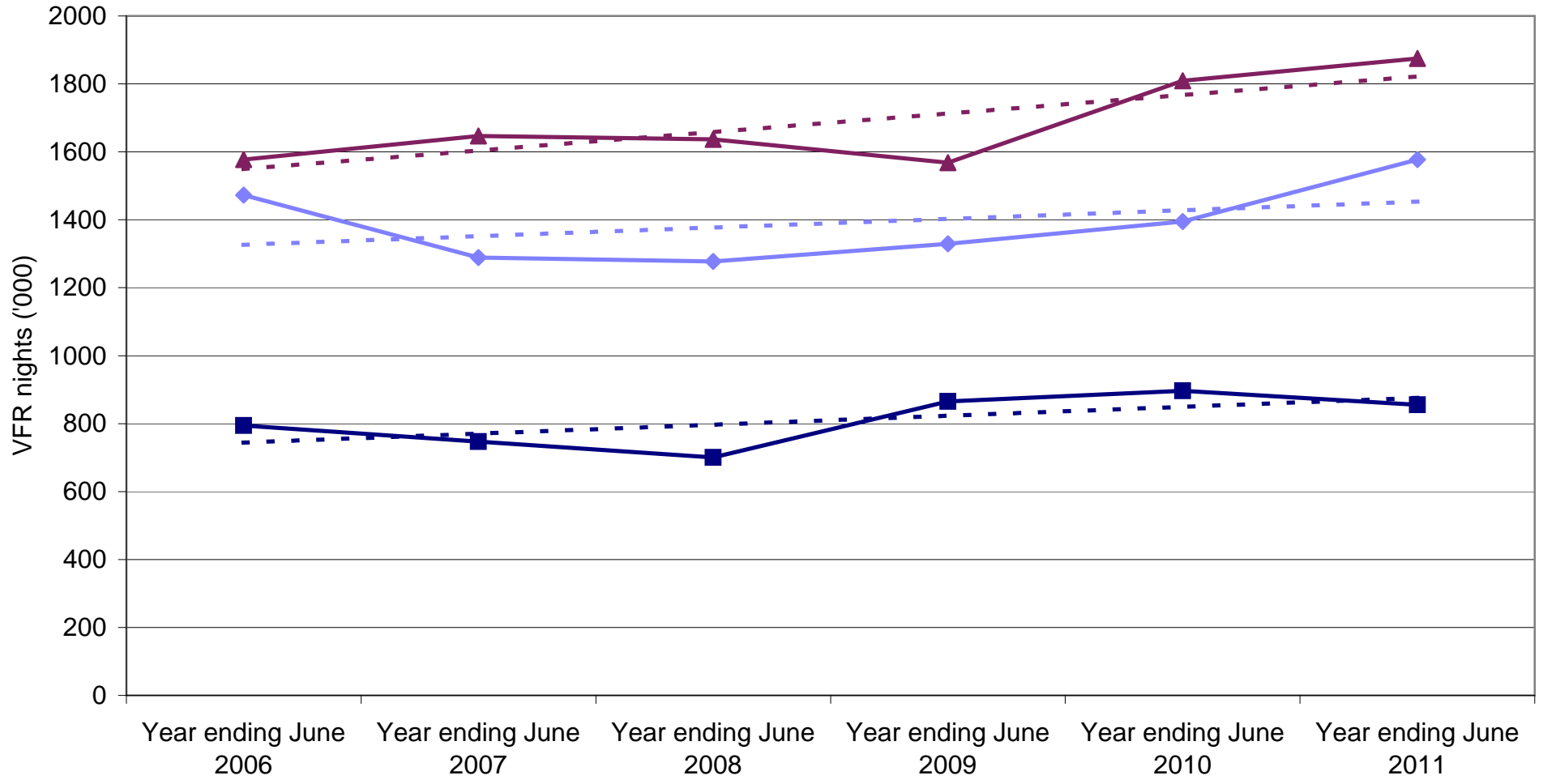
◆ New South Wales  
 ■ Victoria  
 ▲ Queensland  
 - - - Linear (New South Wales)  
 - - - Linear (Victoria)  
 - - - Linear (Queensland)

### New Zealand VFR visitors by State visited



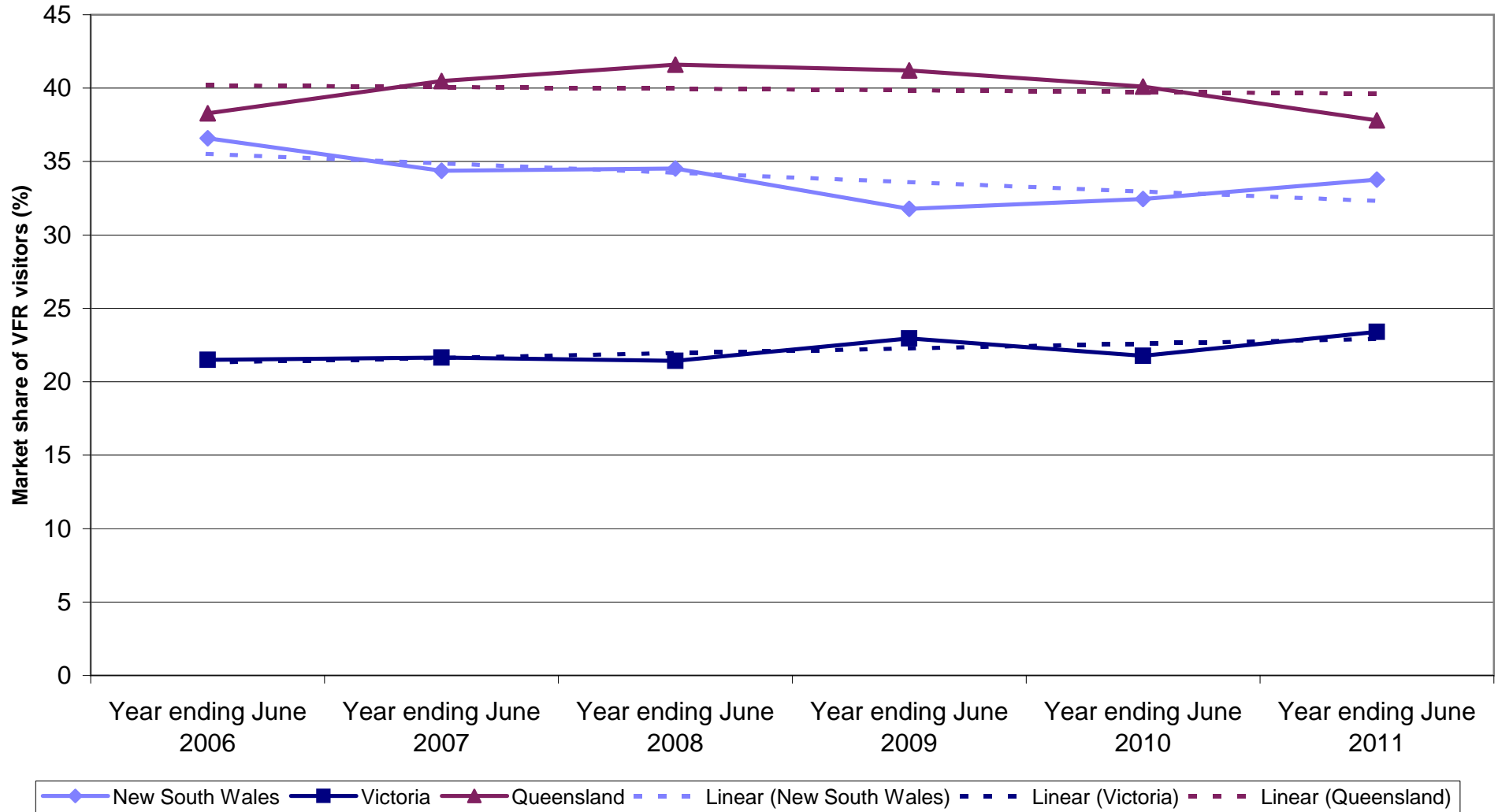
Legend: New South Wales (blue line with diamond), Victoria (dark blue line with square), Queensland (maroon line with triangle), Linear (New South Wales) (dashed blue), Linear (Victoria) (dashed dark blue), Linear (Queensland) (dashed maroon)

### New Zealand VFR nights by State visited

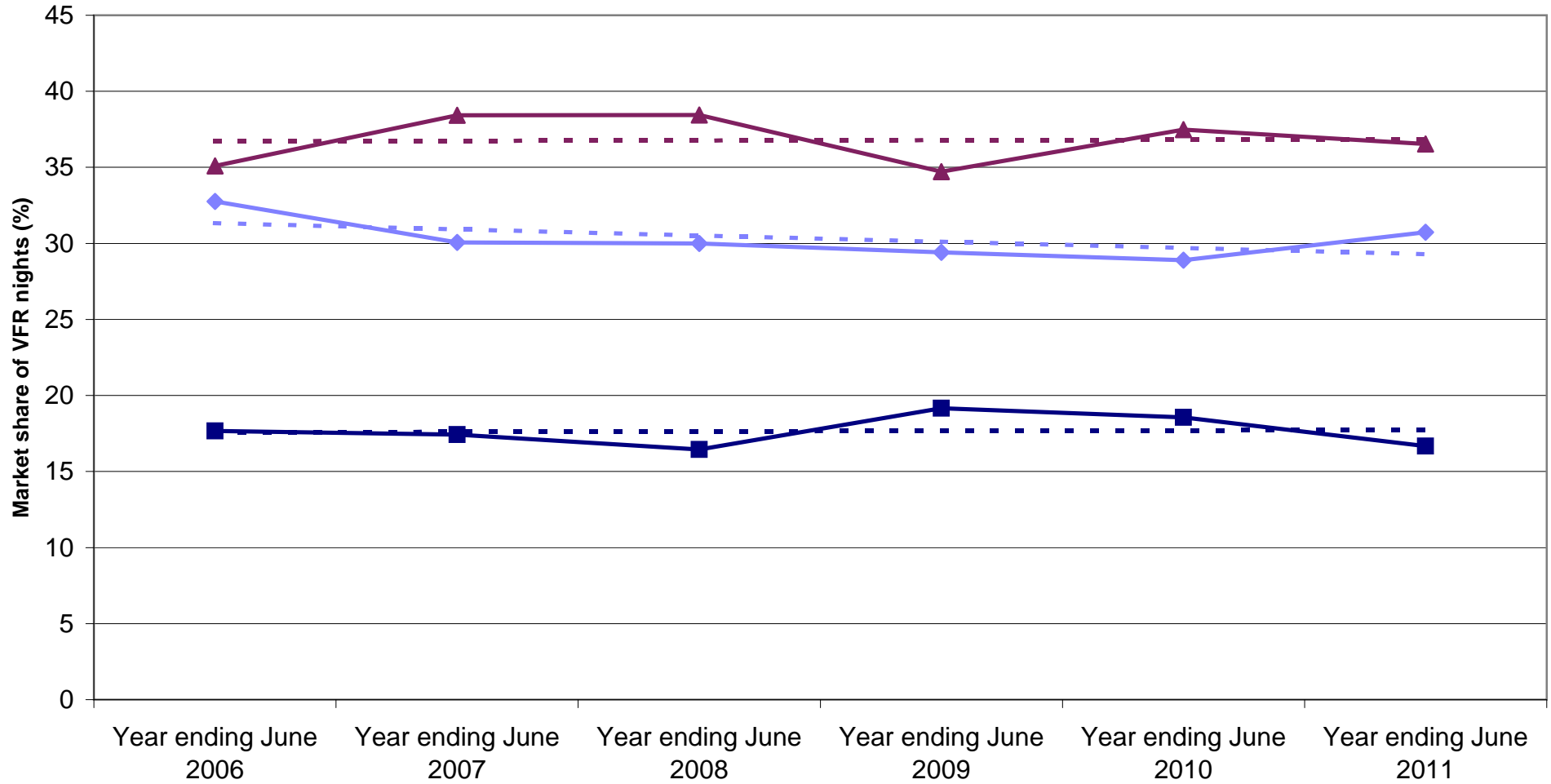


◆ New South Wales  
 ■ Victoria  
 ▲ Queensland  
 - - - Linear (New South Wales)  
 - - - Linear (Victoria)  
 - - - Linear (Queensland)

### State market share of New Zealand VFR visitors to Australia

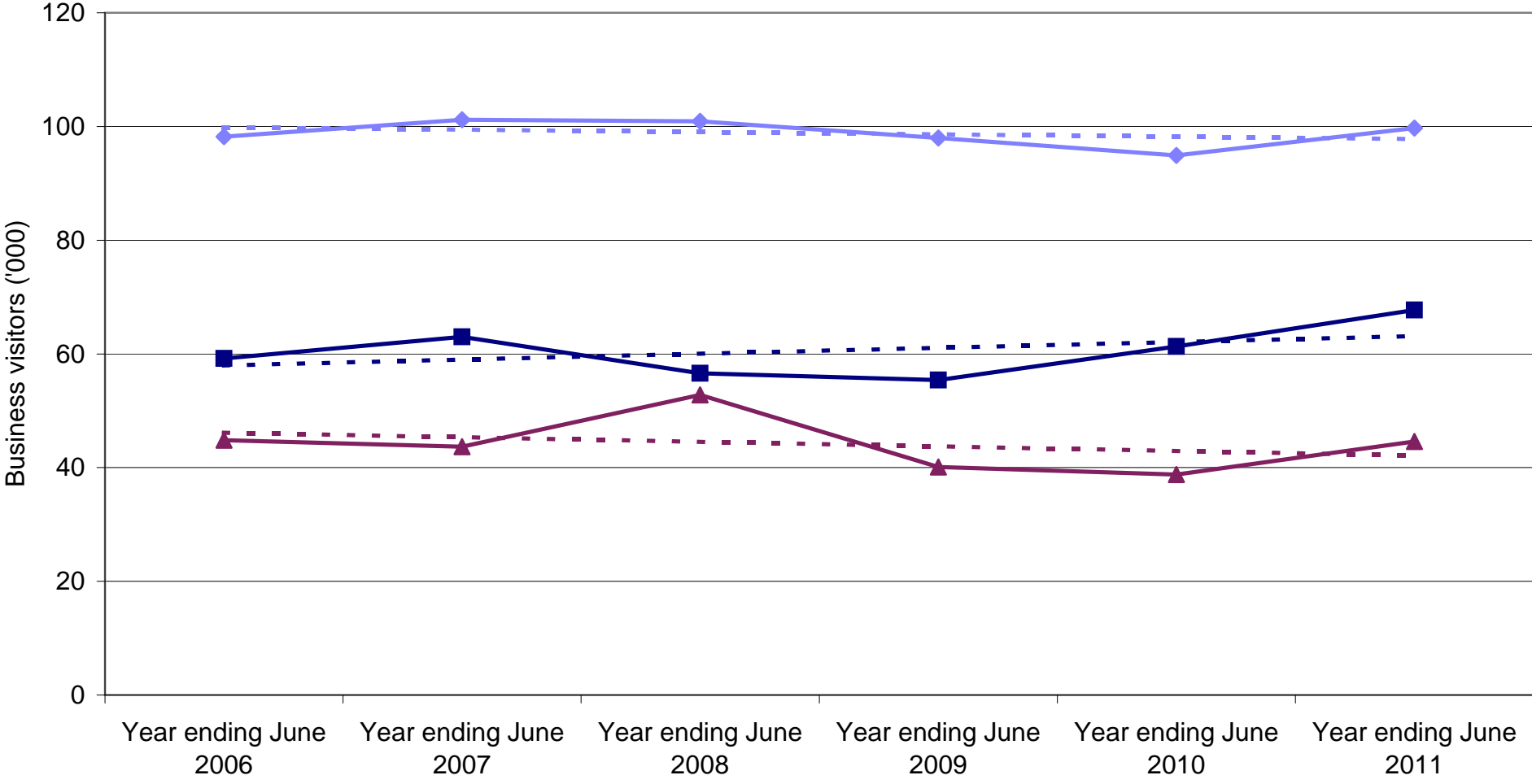


### State market share of New Zealand VFR nights to Australia



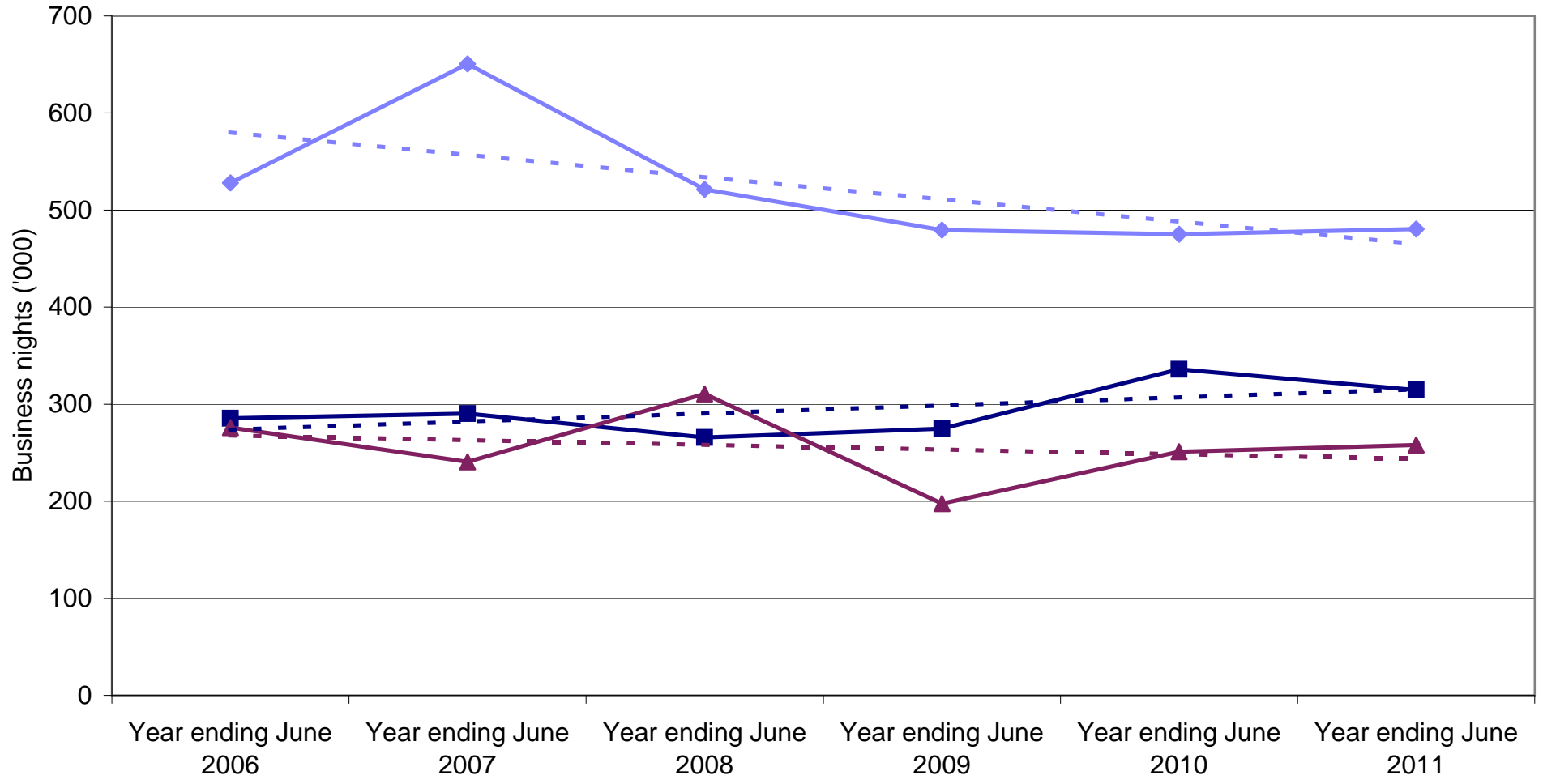
Legend: New South Wales (solid blue line with diamond), Victoria (solid dark blue line with square), Queensland (solid maroon line with triangle), Linear (New South Wales) (dashed blue line), Linear (Victoria) (dashed dark blue line), Linear (Queensland) (dashed maroon line)

### New Zealand Business visitors by State visited



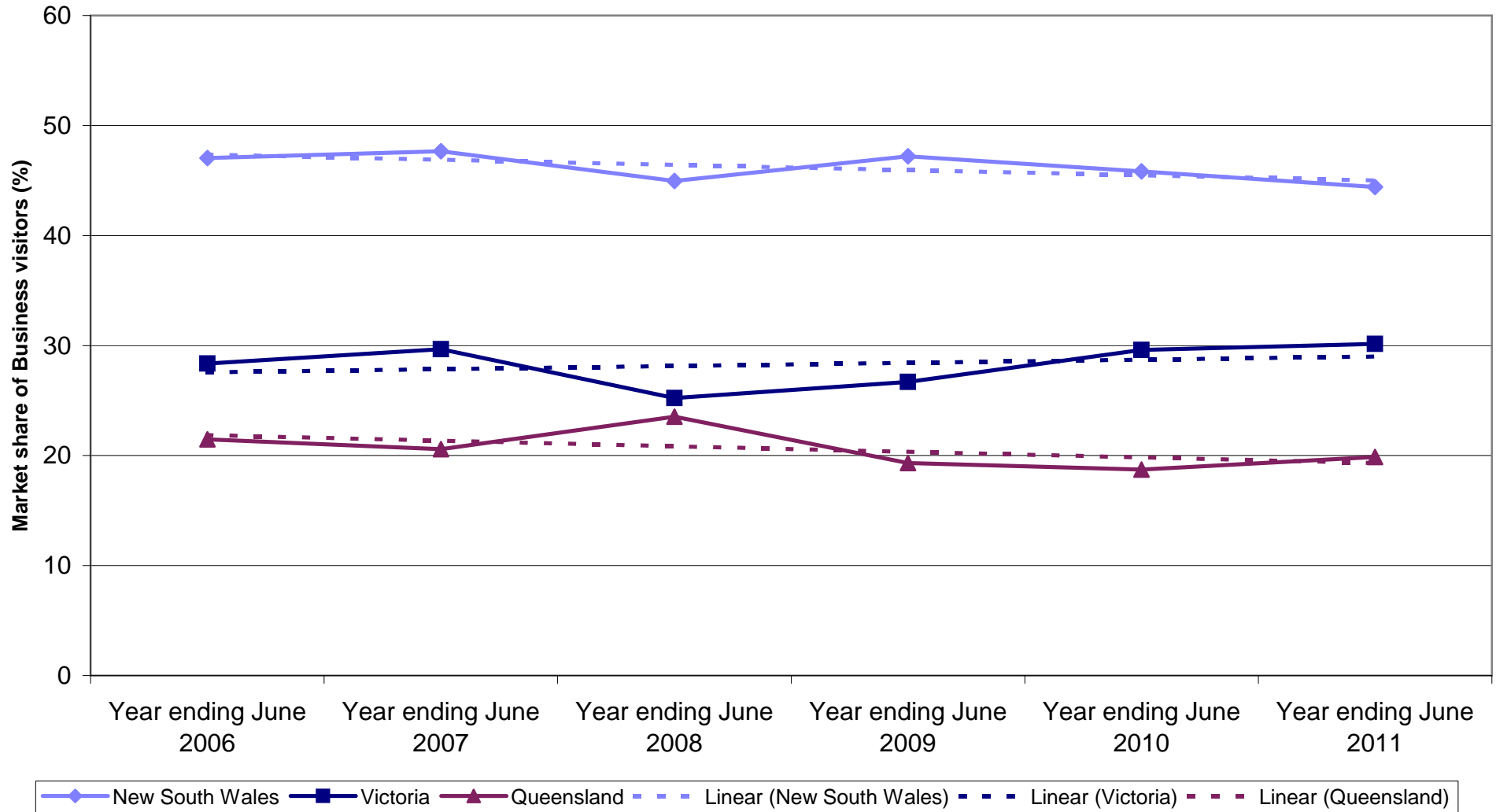
◆ New South Wales  
 ■ Victoria  
 ▲ Queensland  
 - - - Linear (New South Wales)  
 - - - Linear (Victoria)  
 - - - Linear (Queensland)

### New Zealand Business nights by State visited

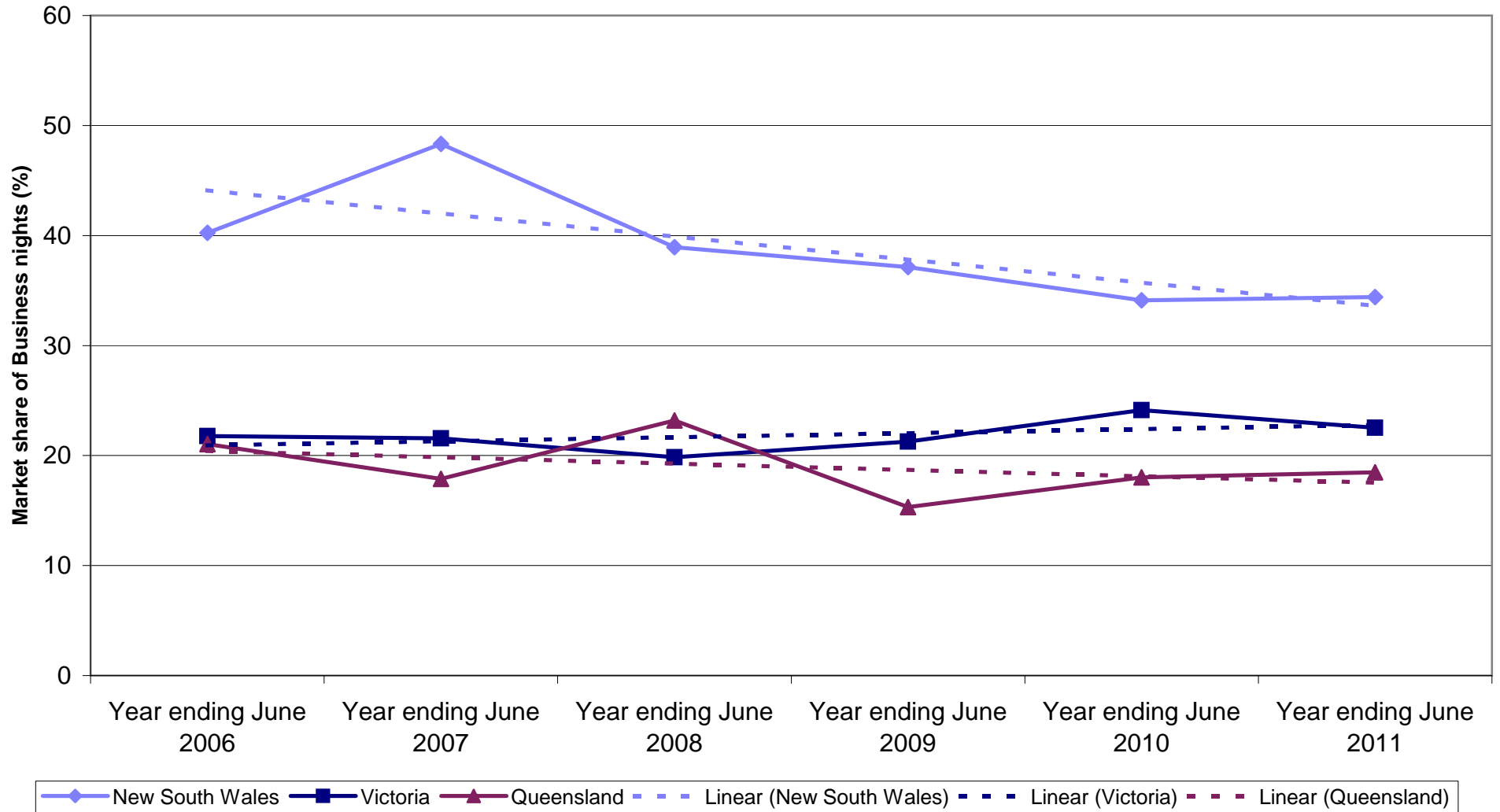


◆ New South Wales  
 ■ Victoria  
 ▲ Queensland  
 - - - Linear (New South Wales)  
 - - - Linear (Victoria)  
 - - - Linear (Queensland)

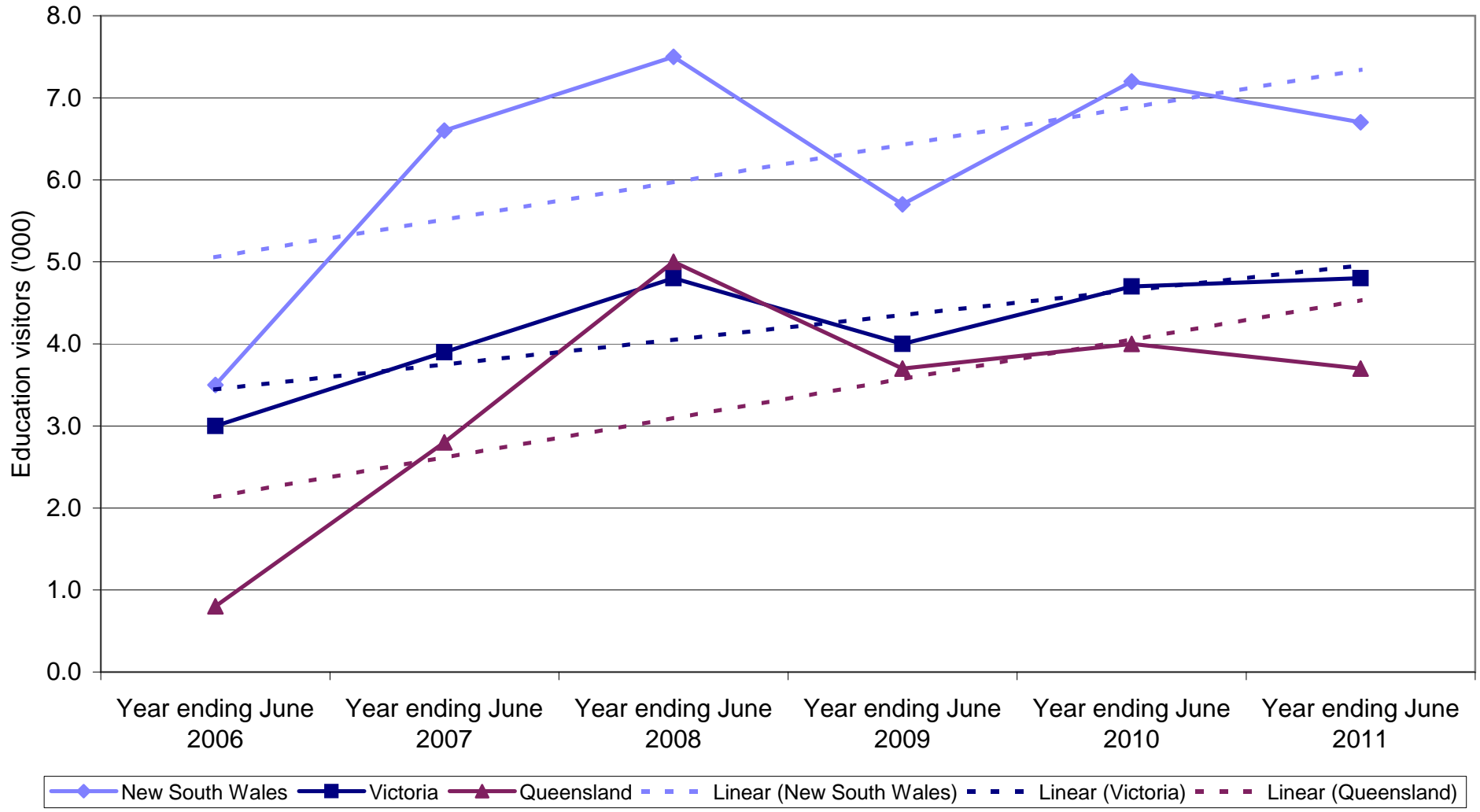
### State market share of New Zealand Business visitors to Australia



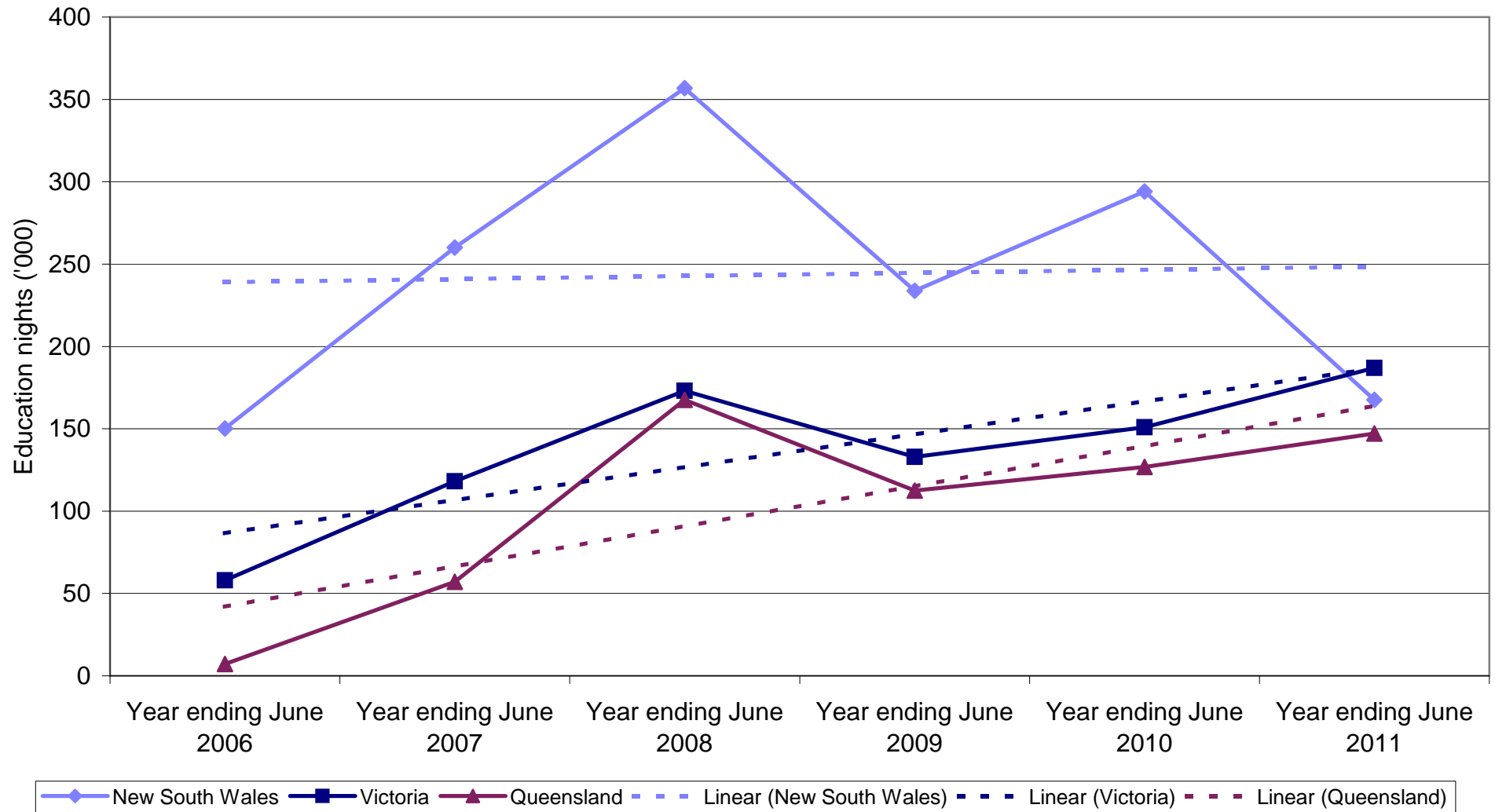
### State market share of New Zealand Business nights to Australia



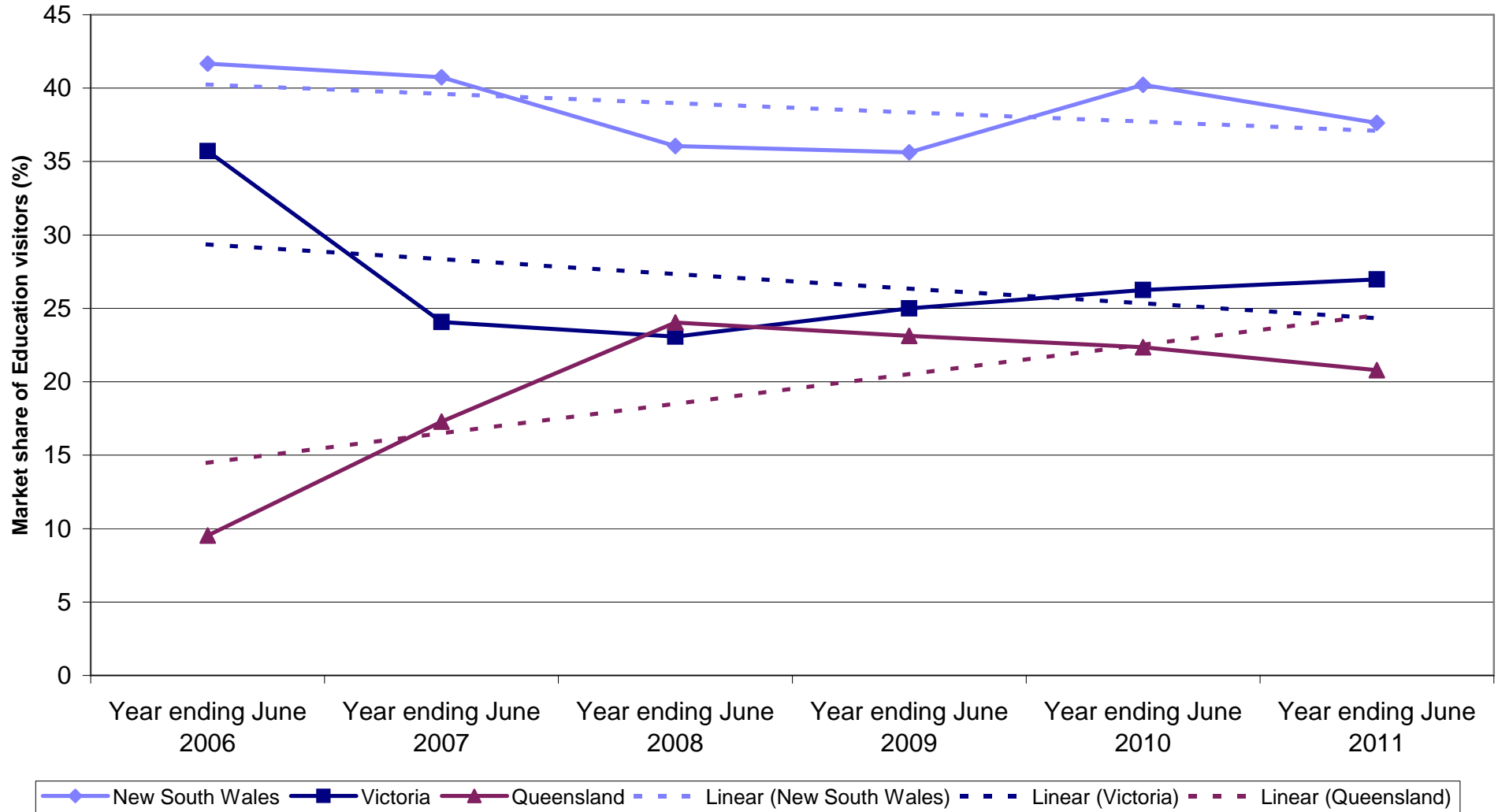
### New Zealand Education visitors by State visited



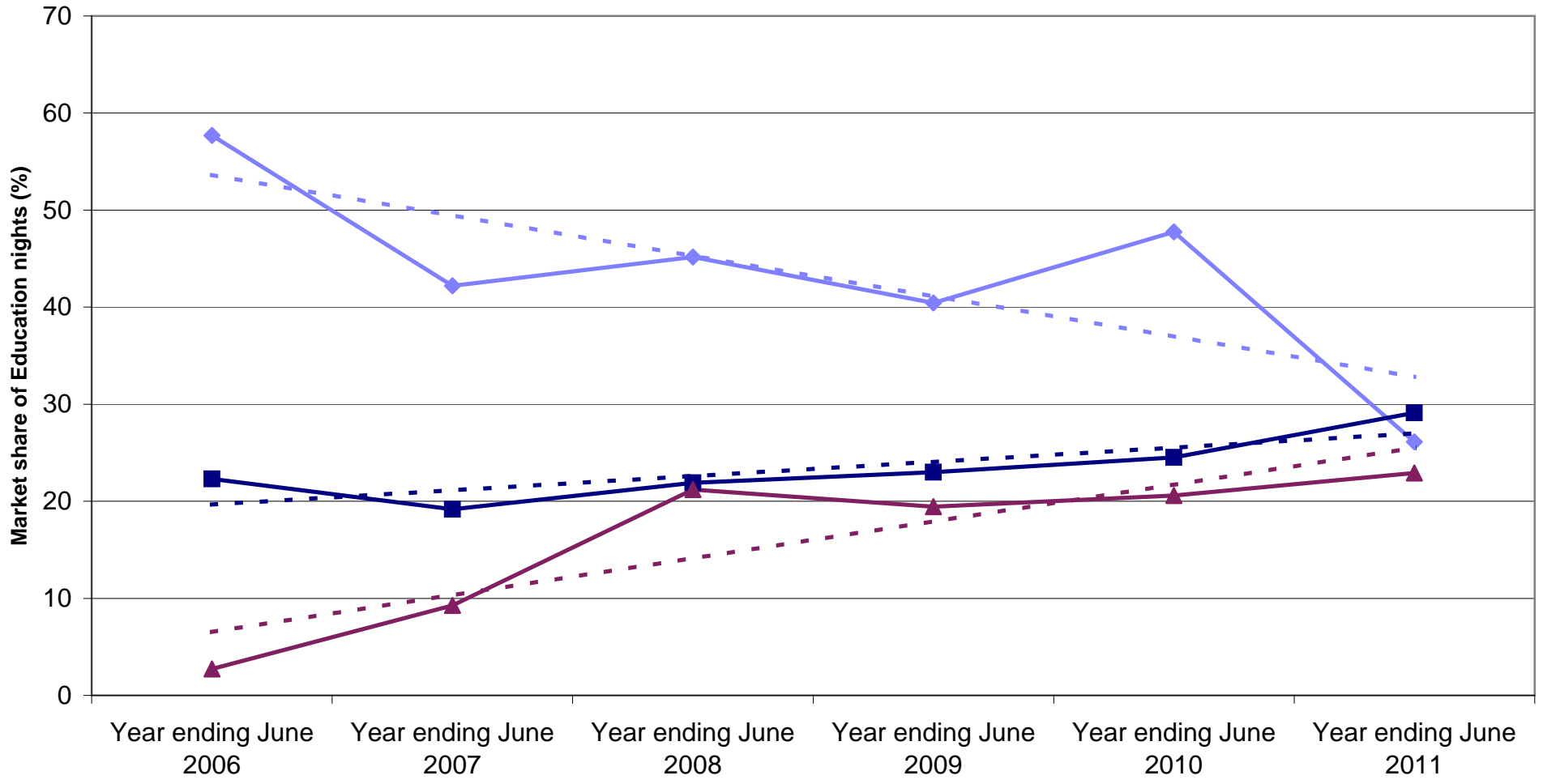
### New Zealand Education nights by State visited



### State market share of New Zealand Education visitors to Australia

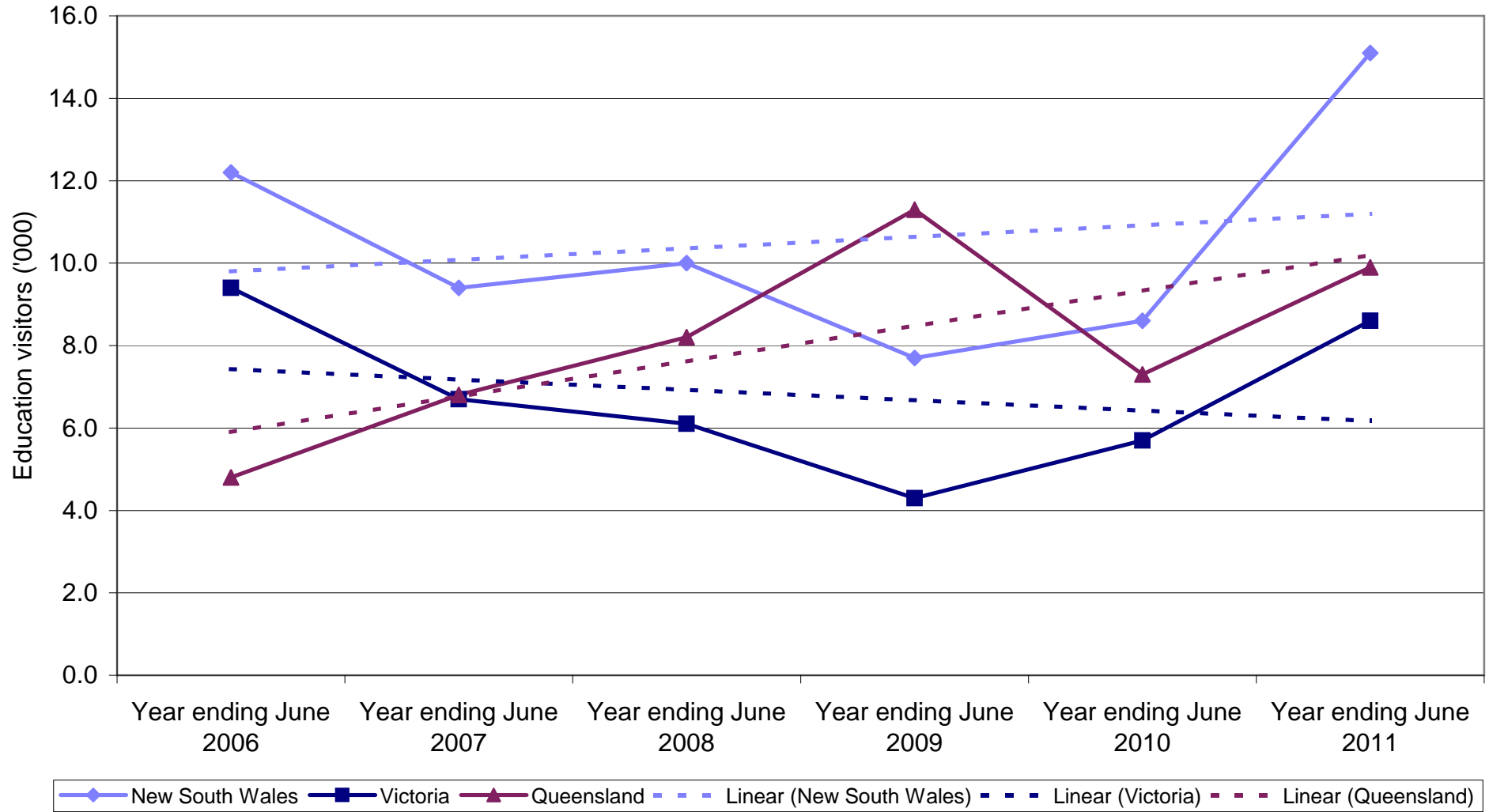


### State market share of New Zealand Education nights to Australia

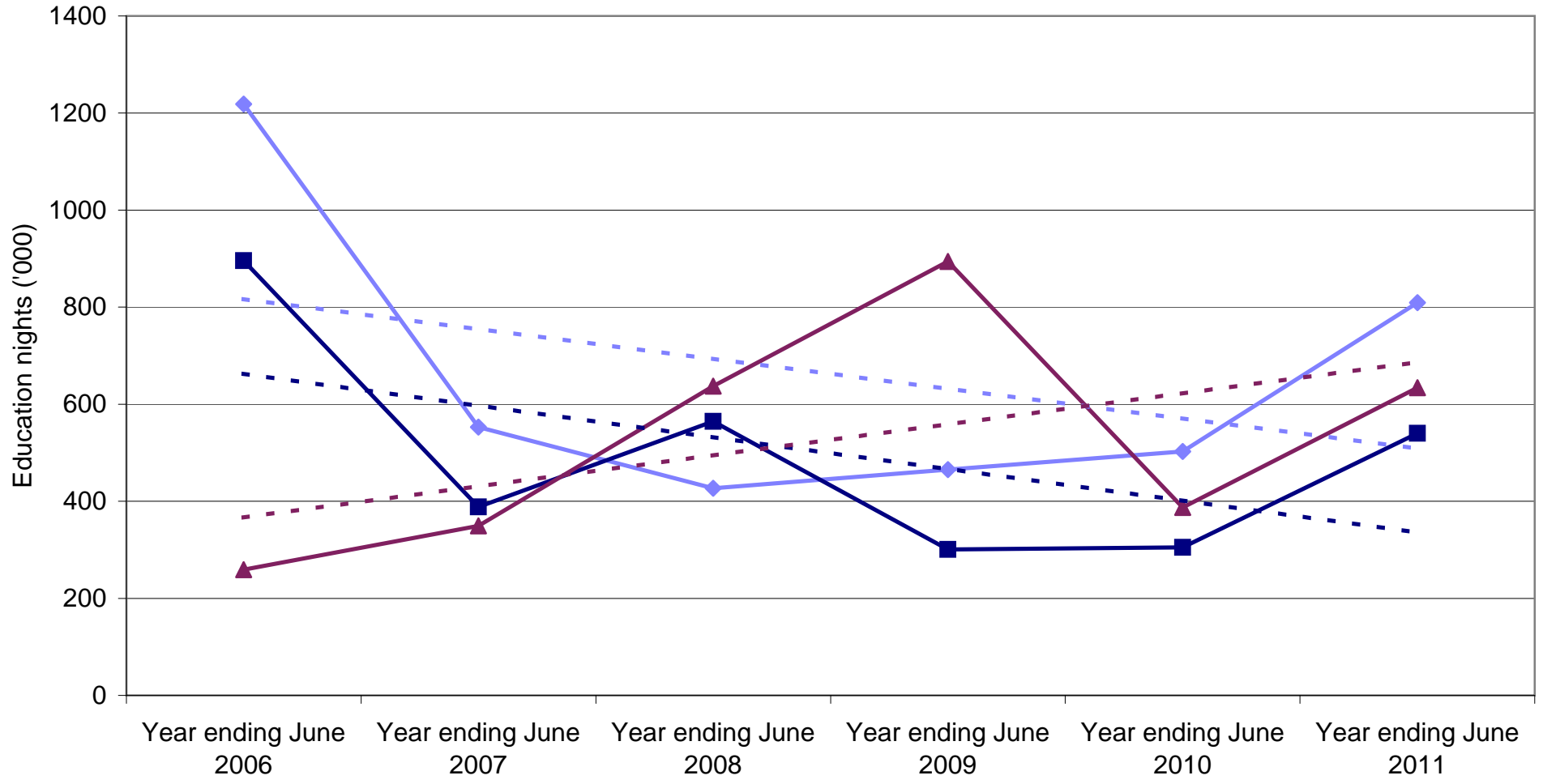


Legend: New South Wales (solid blue line with diamonds), Victoria (solid dark blue line with squares), Queensland (solid maroon line with triangles), Linear (New South Wales) (dashed blue line), Linear (Victoria) (dashed dark blue line), Linear (Queensland) (dashed maroon line).

### New Zealand Employment visitors by State visited

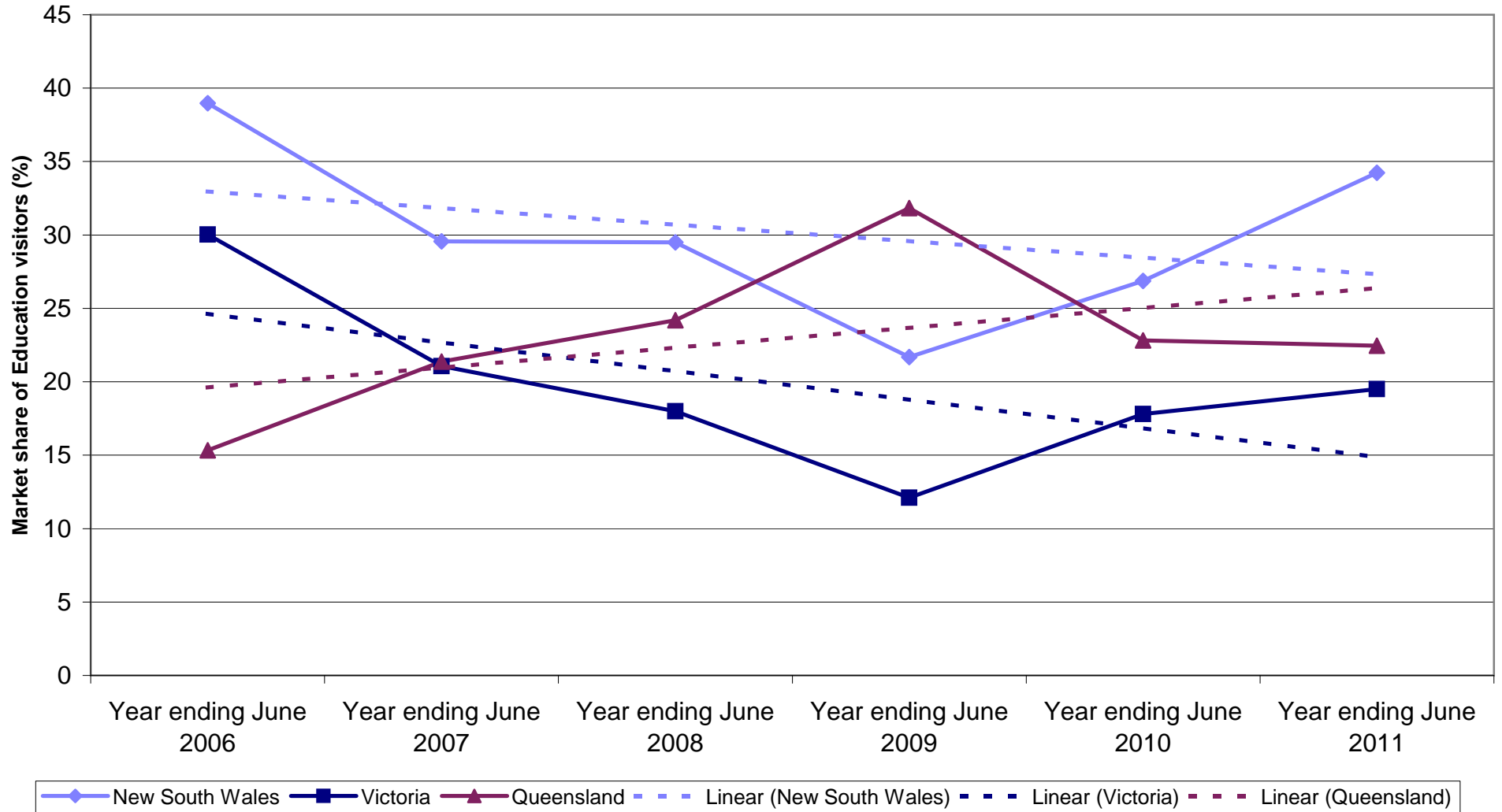


### New Zealand Employment nights by State visited



◆ New South Wales 
 ■ Victoria 
 ▲ Queensland 
 - - - Linear (New South Wales) 
 - - - Linear (Victoria) 
 - - - Linear (Queensland)

### State market share of New Zealand Employment visitors to Australia



### State market share of New Zealand Employment nights to Australia

