



United Kingdom - Times Series Year ending June 2006 - 2011

By stopover reason for visit

Holiday visitors ('000)	State visited	Year ending June 2006	Year ending June 2007	Year ending June 2008	Year ending June 2009	Year ending June 2010	Year ending June 2011
		New South Wales	297	317	273	257	247
	Victoria	127	158	130	125	118	116
	Queensland	231	230	208	195	187	159
	Total	443	471	426	400	391	362

Market share of holiday visitors (per cent)	State visited	Year ending June 2006	Year ending June 2007	Year ending June 2008	Year ending June 2009	Year ending June 2010	Year ending June 2011
		New South Wales	66.9	67.4	64.2	64.1	63.2
	Victoria	28.7	33.5	30.5	31.2	30.1	32.1
	Queensland	52.1	48.8	48.8	48.8	47.7	43.9

Holiday visitor nights ('000)	State visited	Year ending June 2006	Year ending June 2007	Year ending June 2008	Year ending June 2009	Year ending June 2010	Year ending June 2011
		New South Wales	4,026	4,157	3,596	3,770	4,081
	Victoria	1,474	1,835	1,492	1,599	1,616	1,216
	Queensland	3,420	3,565	3,037	3,397	3,451	2,620
	Total	11,432	12,166	10,405	11,241	11,523	9,384

Market share of holiday visitor nights (per cent)	State visited	Year ending June 2006	Year ending June 2007	Year ending June 2008	Year ending June 2009	Year ending June 2010	Year ending June 2011
		New South Wales	35.2	34.2	34.6	33.5	35.4
	Victoria	12.9	15.1	14.3	14.2	14.0	13.0
	Queensland	29.9	29.3	29.2	30.2	29.9	27.9

VFR visitors ('000)	State visited	Year ending June 2006	Year ending June 2007	Year ending June 2008	Year ending June 2009	Year ending June 2010	Year ending June 2011
		New South Wales	136	132	129	124	126
	Victoria	87	85	86	85	87	87
	Queensland	77	85	79	85	81	80
	Total	354	357	361	352	352	345

Market share of VFR visitors (per cent)	State visited	Year ending June 2006	Year ending June 2007	Year ending June 2008	Year ending June 2009	Year ending June 2010	Year ending June 2011
		New South Wales	38.3	36.8	35.6	35.2	35.7
	Victoria	24.5	23.8	23.7	24.3	24.7	25.3
	Queensland	21.7	23.9	21.8	24.2	23.0	23.1

VFR visitor nights ('000)	State visited	Year ending June 2006	Year ending June 2007	Year ending June 2008	Year ending June 2009	Year ending June 2010	Year ending June 2011
		New South Wales	1,924	1,949	1,927	2,015	2,081
	Victoria	1,354	1,400	1,444	1,243	1,614	1,534
	Queensland	1,140	1,367	1,266	1,401	1,391	1,693
	Total	6,933	7,140	7,131	7,075	7,531	7,806

Market share of VFR visitor nights (per cent)	State visited	Year ending June 2006	Year ending June 2007	Year ending June 2008	Year ending June 2009	Year ending June 2010	Year ending June 2011
		New South Wales	27.8	27.3	27.0	28.5	27.6
	Victoria	19.5	19.6	20.2	17.6	21.4	19.6
	Queensland	16.4	19.1	17.7	19.8	18.5	21.7

Source: International Visitor Survey.

Base: All visitors aged 15 years and over travel grid completed.

United Kingdom - Times Series Year ending June 2006 - 2011

Business visitors ('000)	State visited	Year ending June 2006	Year ending June 2007	Year ending June 2008	Year ending June 2009	Year ending June 2010	Year ending June 2011
		New South Wales	29	32	27	25	24
	Victoria	15	15	17	12	16	18
	Queensland	12	11	8	9	10	12
	Total	53	59	58	53	53	59

Market share of business visitors (per cent)	State visited	Year ending June 2006	Year ending June 2007	Year ending June 2008	Year ending June 2009	Year ending June 2010	Year ending June 2011
		New South Wales	54.1	54.4	47.0	46.9	46.1
	Victoria	27.9	25.9	29.0	22.6	30.2	30.8
	Queensland	22.3	18.5	14.0	17.5	18.7	20.5

Business visitor nights ('000)	State visited	Year ending June 2006	Year ending June 2007	Year ending June 2008	Year ending June 2009	Year ending June 2010	Year ending June 2011
		New South Wales	495	706	266	219	339
	Victoria	246	191	138	156	218	298
	Queensland	65	89	70	40	57	141
	Total	991	1,199	730	662	899	1,092

Market share of business visitor nights (per cent)	State visited	Year ending June 2006	Year ending June 2007	Year ending June 2008	Year ending June 2009	Year ending June 2010	Year ending June 2011
		New South Wales	50.0	58.9	36.5	33.0	37.7
	Victoria	24.8	16.0	18.9	23.6	24.3	27.3
	Queensland	6.6	7.4	9.6	6.1	6.3	12.9

Education visitors ('000)	State visited	Year ending June 2006	Year ending June 2007	Year ending June 2008	Year ending June 2009	Year ending June 2010	Year ending June 2011
		New South Wales	1.8	1.7	3.2	3.1	2.4
	Victoria	2.1	1.1	1.3	1.0	0.6	1.4
	Queensland	1.4	1.3	0.6	0.8	1.8	1.1
	Total	5.8	4.8	5.7	6.7	6.4	6.3

Market share of Education visitors (per cent)	State visited	Year ending June 2006	Year ending June 2007	Year ending June 2008	Year ending June 2009	Year ending June 2010	Year ending June 2011
		New South Wales	31.0	35.4	56.1	46.3	37.5
	Victoria	36.2	22.9	22.8	14.9	9.4	22.2
	Queensland	24.1	27.1	10.5	11.9	28.1	17.5

Education visitor nights ('000)	State visited	Year ending June 2006	Year ending June 2007	Year ending June 2008	Year ending June 2009	Year ending June 2010	Year ending June 2011
		New South Wales	80	115	269	390	106
	Victoria	93	60	139	75	43	157
	Queensland	68	53	34	93	154	24
	Total	366	254	511	786	391	420

Market share of Education visitor nights (per cent)	State visited	Year ending June 2006	Year ending June 2007	Year ending June 2008	Year ending June 2009	Year ending June 2010	Year ending June 2011
		New South Wales	21.9	45.0	52.7	49.6	27.1
	Victoria	25.5	23.4	27.1	9.5	11.1	37.5
	Queensland	18.7	20.8	6.6	11.8	39.4	5.7

Employment visitors ('000)	State visited	Year ending June 2006	Year ending June 2007	Year ending June 2008	Year ending June 2009	Year ending June 2010	Year ending June 2011
		New South Wales	7.6	7.7	8.0	7.7	6.6
	Victoria	5.6	4.2	4.7	4.1	3.0	5.3
	Queensland	4.0	4.3	4.6	5.3	3.7	5.1
	Total	17.2	19.4	17.4	20.8	15.6	21.1

Market share of Employment visitors (per cent)	State visited	Year ending June 2006	Year ending June 2007	Year ending June 2008	Year ending June 2009	Year ending June 2010	Year ending June 2011
		New South Wales	44.2	39.7	46.0	37.0	42.3
	Victoria	32.6	21.6	27.0	19.7	19.2	25.1
	Queensland	23.3	22.2	26.4	25.5	23.7	24.2



United Kingdom - Times Series Year ending June 2006 - 2011

		Year ending June 2006	Year ending June 2007	Year ending June 2008	Year ending June 2009	Year ending June 2010	Year ending June 2011
Employment visitor nights ('000)	State visited						
	New South Wales	759	807	592	747	516	767
	Victoria	409	433	319	325	328	486
	Queensland	255	303	363	447	412	285
	Total	1,757	1,829	1,735	2,096	1,816	2,147

		Year ending June 2006	Year ending June 2007	Year ending June 2008	Year ending June 2009	Year ending June 2010	Year ending June 2011
Market share of Employment visitor nights (per cent)	State visited						
	New South Wales	43.2	44.1	34.1	35.6	28.4	35.7
	Victoria	23.3	23.7	18.4	15.5	18.1	22.6
	Queensland	14.5	16.6	20.9	21.3	22.7	13.3

		Year ending June 2006	Year ending June 2007	Year ending June 2008	Year ending June 2009	Year ending June 2010	Year ending June 2011
Total visitors ('000)	State visited						
	New South Wales	425.5	440.1	394.0	374.5	366.6	349.1
	Victoria	213.1	237.5	209.5	200.0	197.3	203.1
	Queensland	285.5	289.4	256.4	250.3	240.4	220.4
	Total	660.7	684.7	643.0	618.8	614.6	595.6

		Year ending June 2006	Year ending June 2007	Year ending June 2008	Year ending June 2009	Year ending June 2010	Year ending June 2011
Market share of total visitors (per cent)	State visited						
	New South Wales	64.4	64.3	61.3	60.5	59.6	58.6
	Victoria	32.3	34.7	32.6	32.3	32.1	34.1
	Queensland	43.2	42.3	39.9	40.4	39.1	37.0

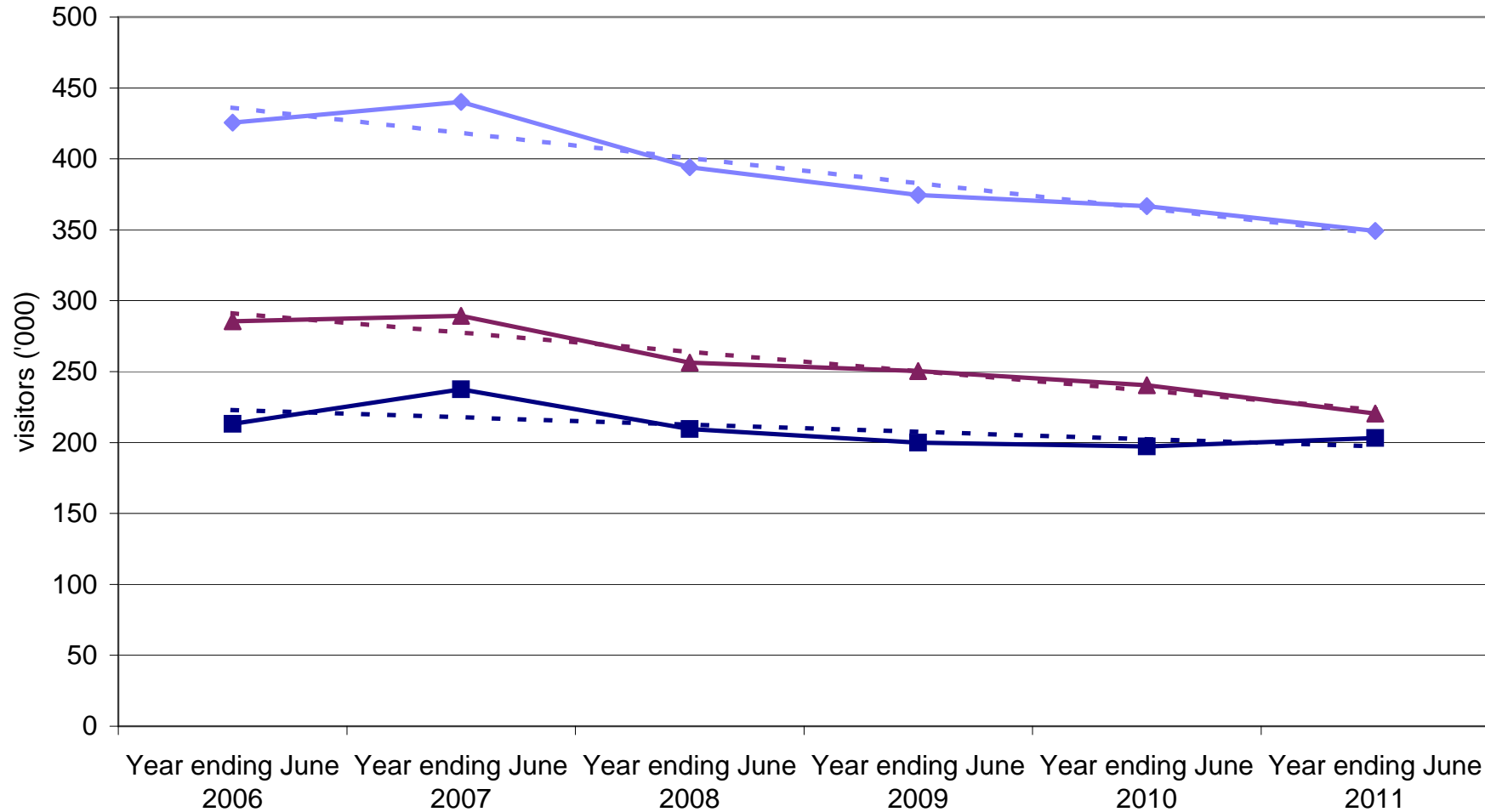
		Year ending June 2006	Year ending June 2007	Year ending June 2008	Year ending June 2009	Year ending June 2010	Year ending June 2011
Total visitor nights ('000)	State visited						
	New South Wales	7,411	7,767	6,673	7,170	7,159	6,764
	Victoria	3,654	3,932	3,539	3,436	3,895	3,704
	Queensland	5,006	5,386	4,783	5,386	5,485	4,776
	Total	21,950	22,826	20,681	22,104	22,445	21,154

		Year ending June 2006	Year ending June 2007	Year ending June 2008	Year ending June 2009	Year ending June 2010	Year ending June 2011
Market share of total visitor nights (per cent)	State visited						
	New South Wales	33.8	34.0	32.3	32.4	31.9	32.0
	Victoria	16.6	17.2	17.1	15.5	17.4	17.5
	Queensland	22.8	23.6	23.1	24.4	24.4	22.6

Source: International Visitor Survey.

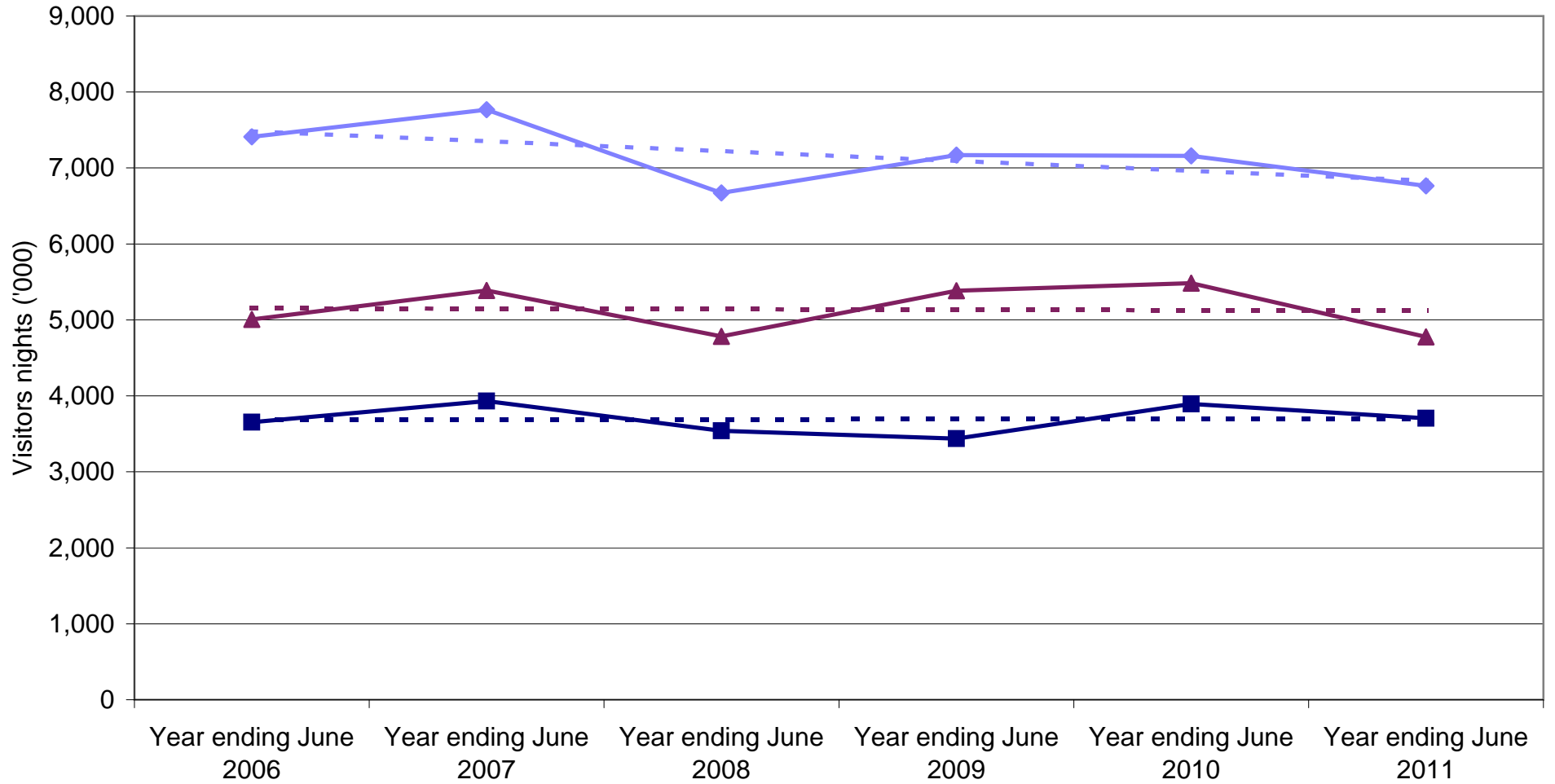
Base: All visitors aged 15 years and over travel grid completed.

UK visitors by State visited



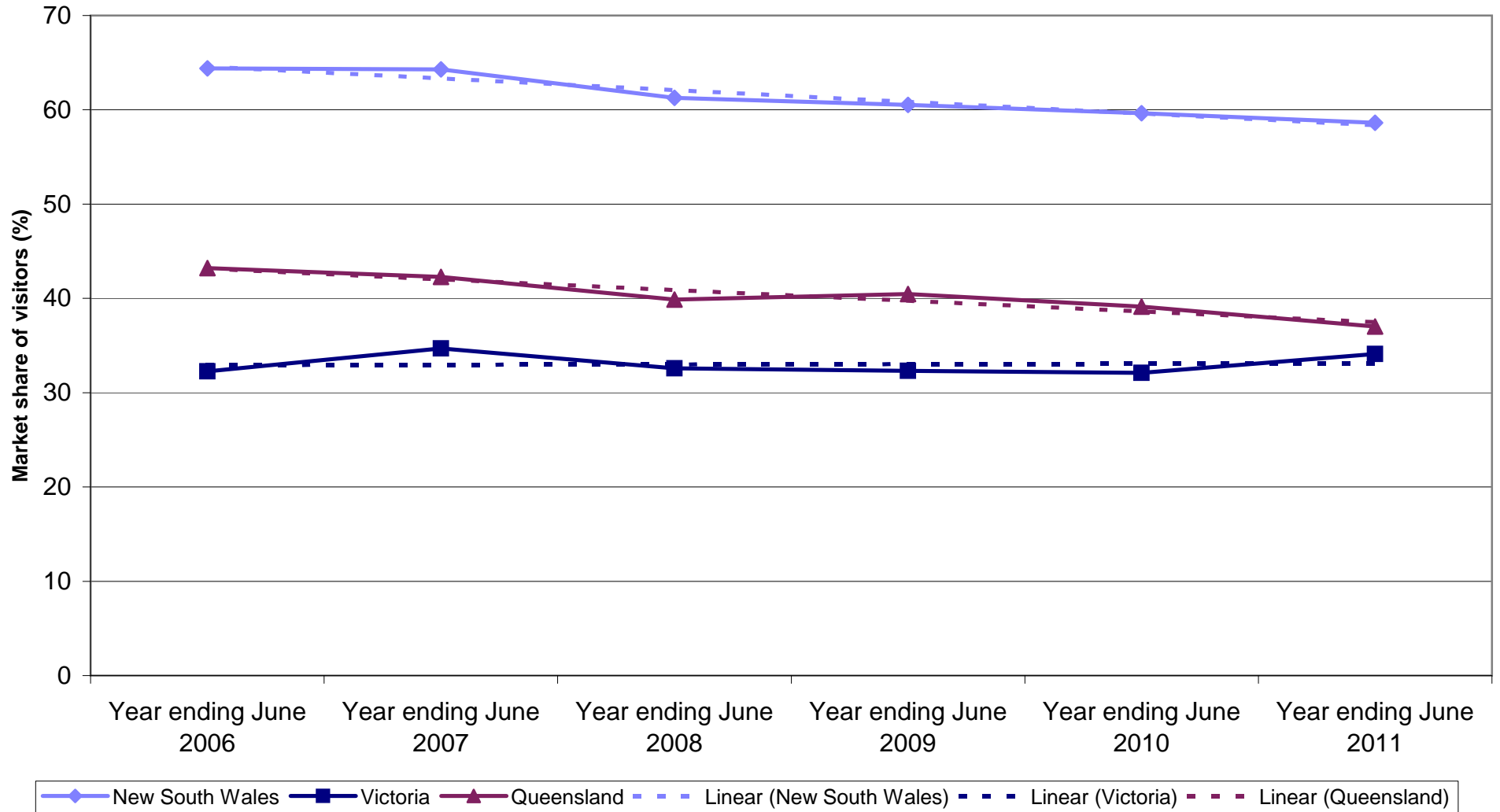
Legend: New South Wales (blue line with diamond), Victoria (dark blue line with square), Queensland (maroon line with triangle), Linear (New South Wales) (dashed blue), Linear (Victoria) (dashed dark blue), Linear (Queensland) (dashed maroon).

UK nights by State visited

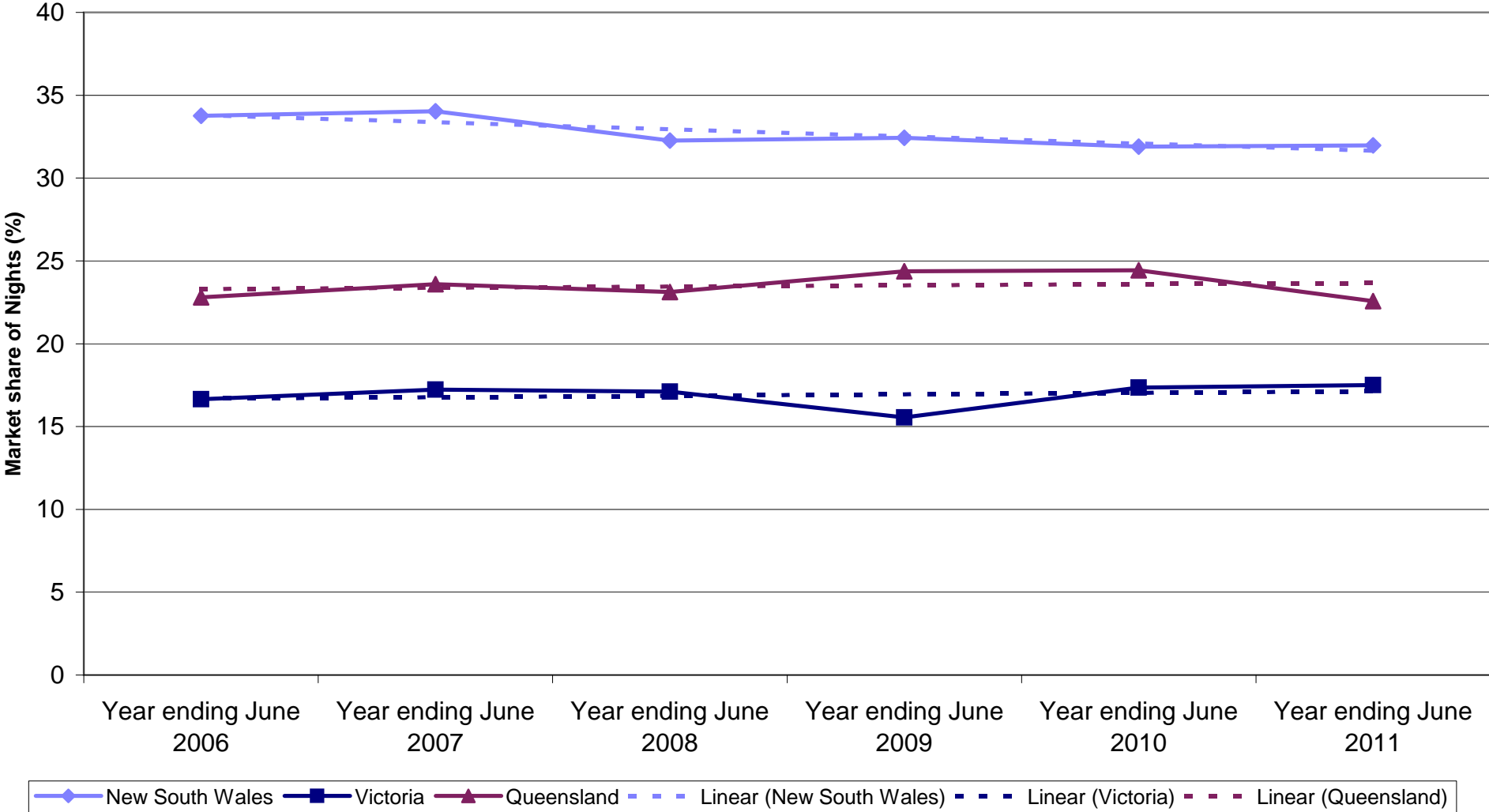


Legend: New South Wales (solid blue line with diamond markers), Victoria (solid dark blue line with square markers), Queensland (solid maroon line with triangle markers), Linear (New South Wales) (dashed light blue line), Linear (Victoria) (dashed dark blue line), Linear (Queensland) (dashed maroon line).

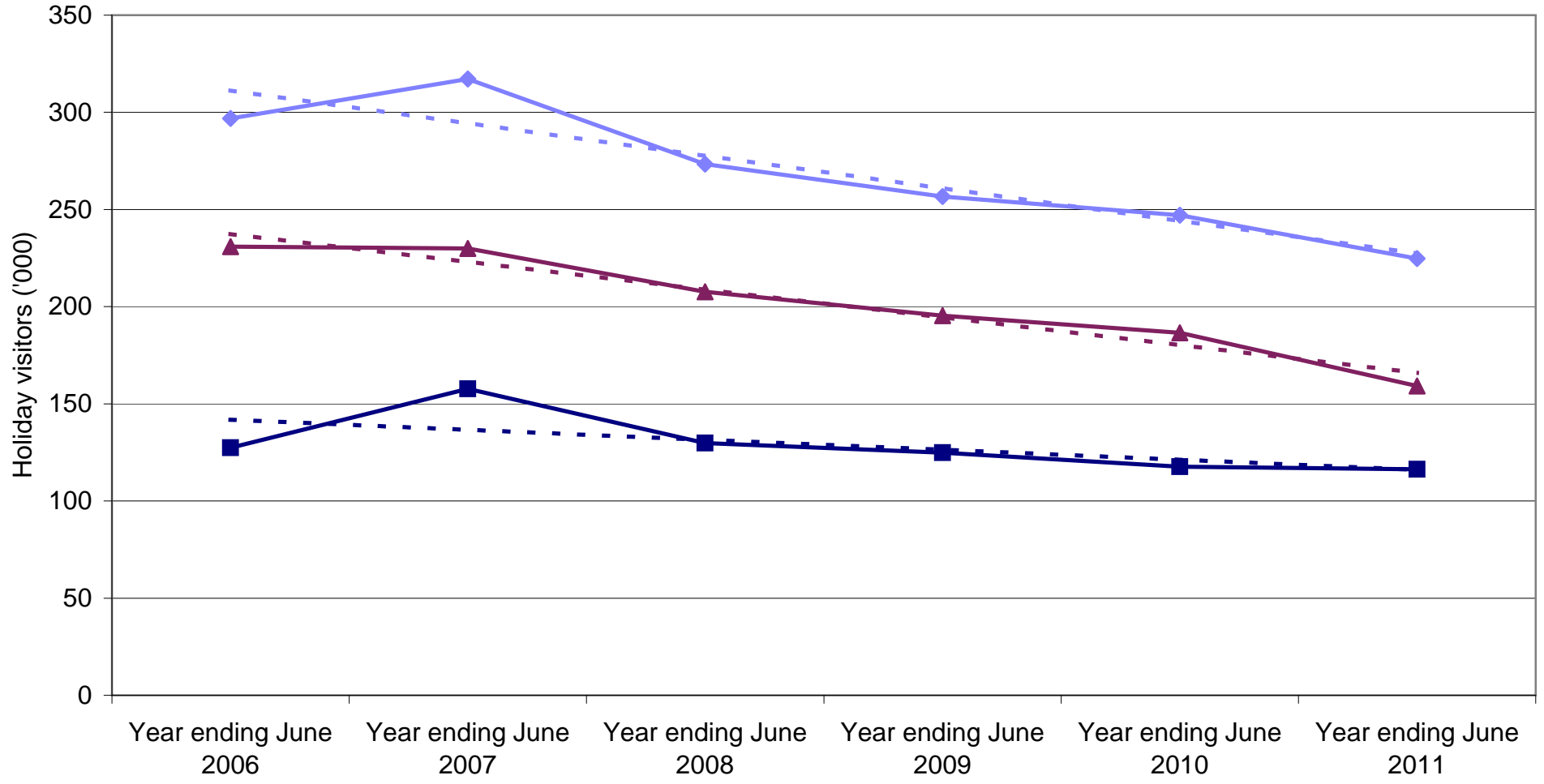
State market share of UK visitors to Australia



State market share of UK nights to Australia

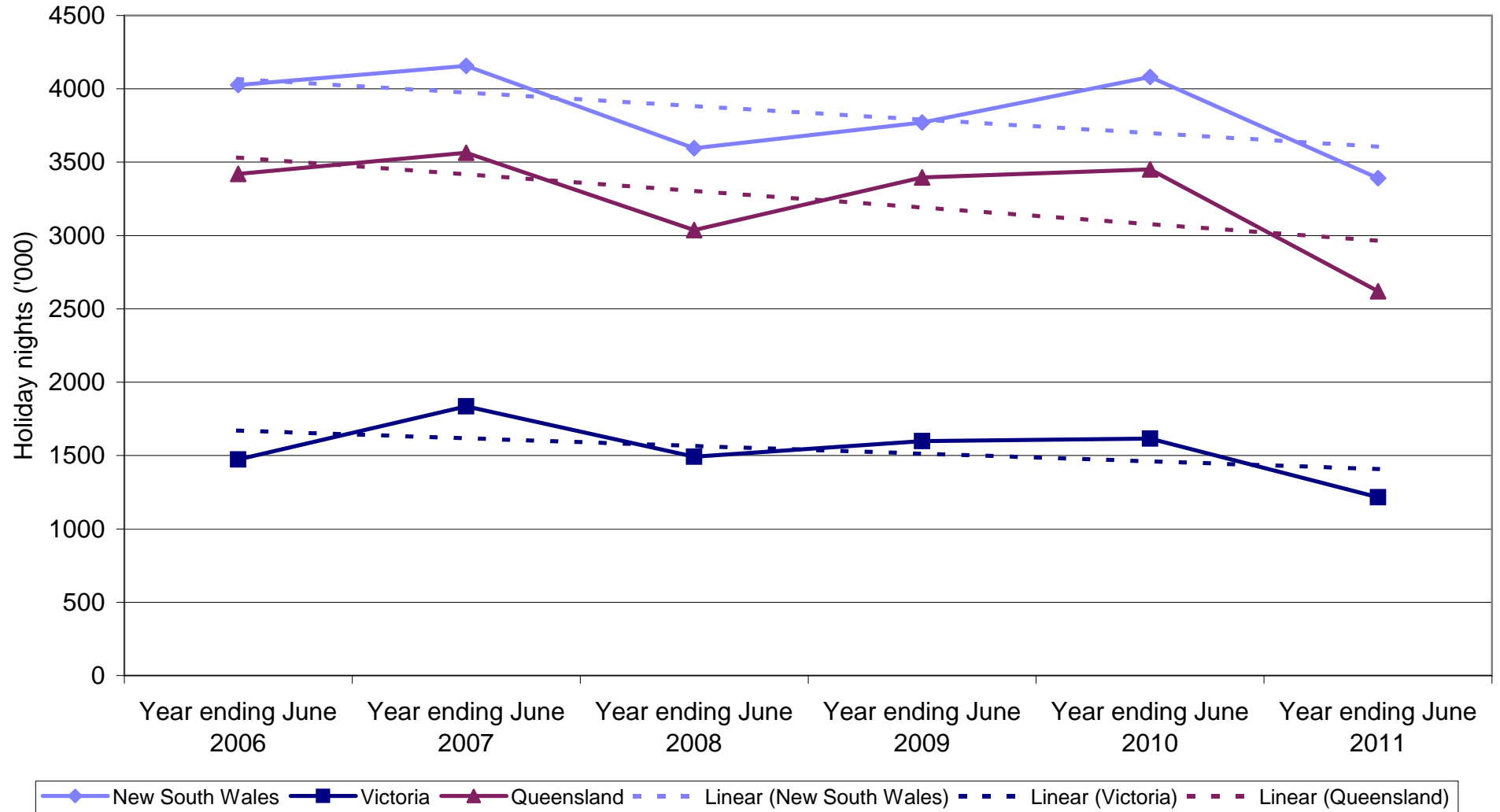


UK holiday visitors by State visited

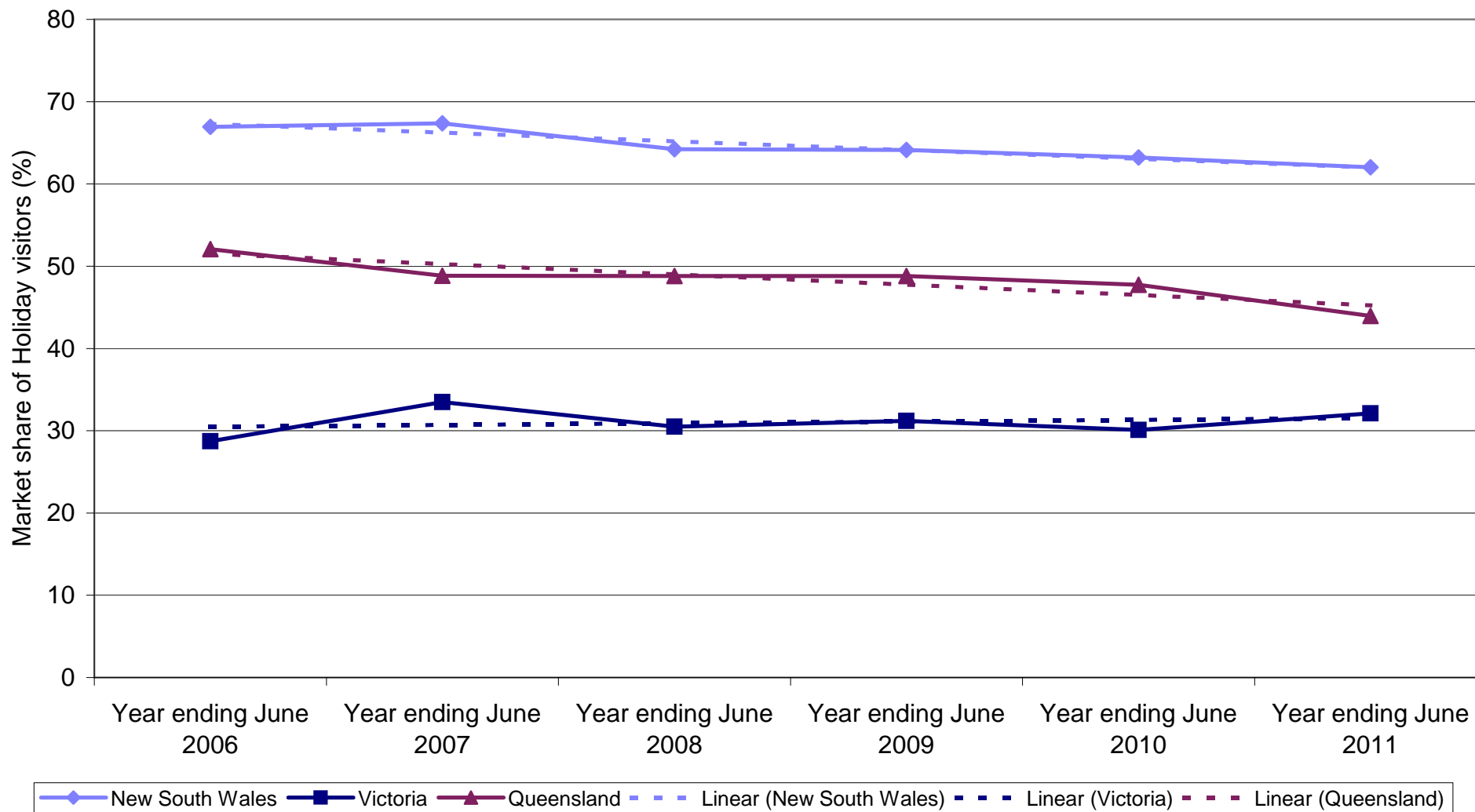


Legend: New South Wales (solid blue line with diamond markers), Victoria (solid dark blue line with square markers), Queensland (solid maroon line with triangle markers), Linear (New South Wales) (dashed blue line), Linear (Victoria) (dashed dark blue line), Linear (Queensland) (dashed maroon line).

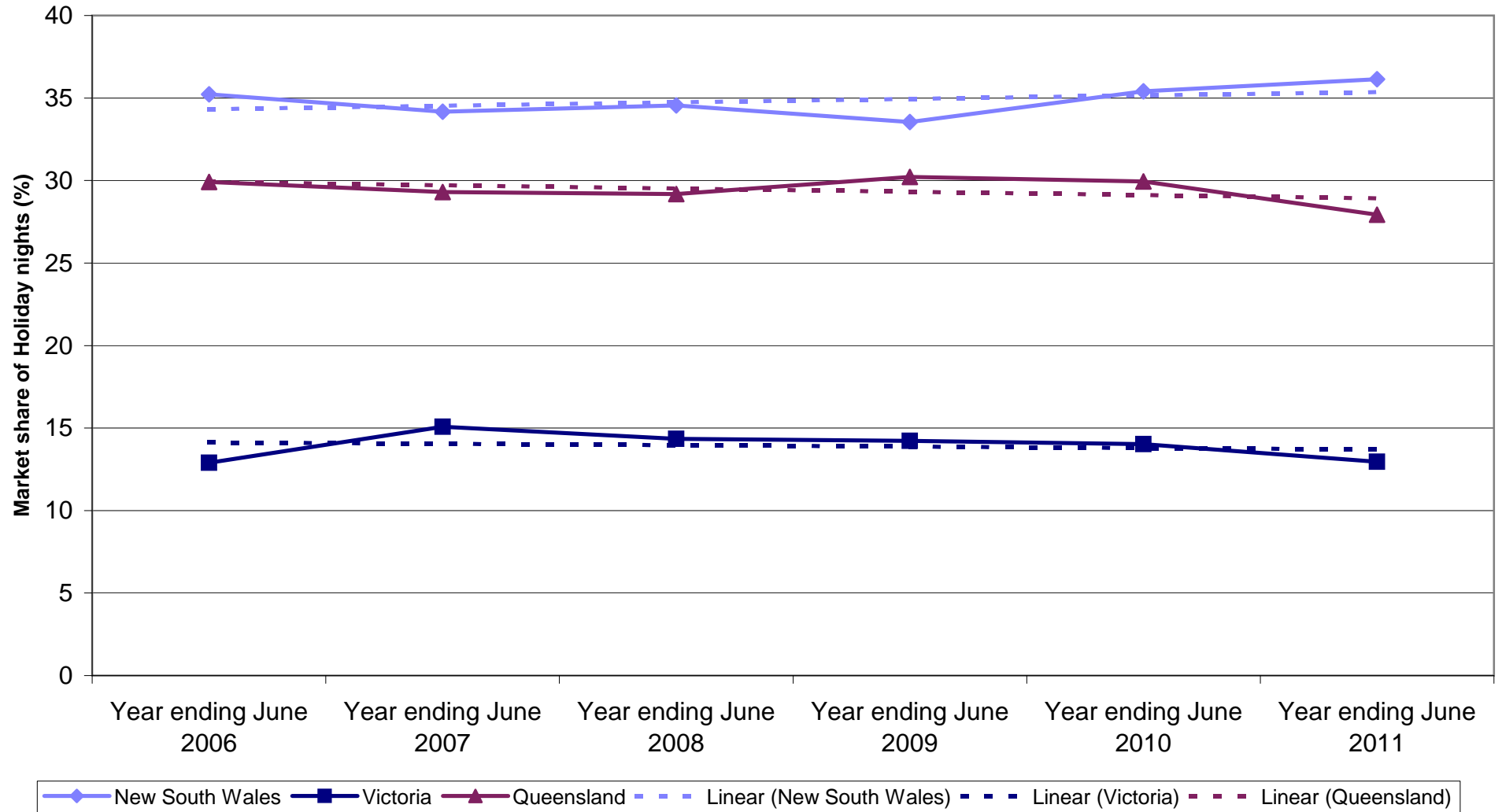
UK holiday nights by State visited



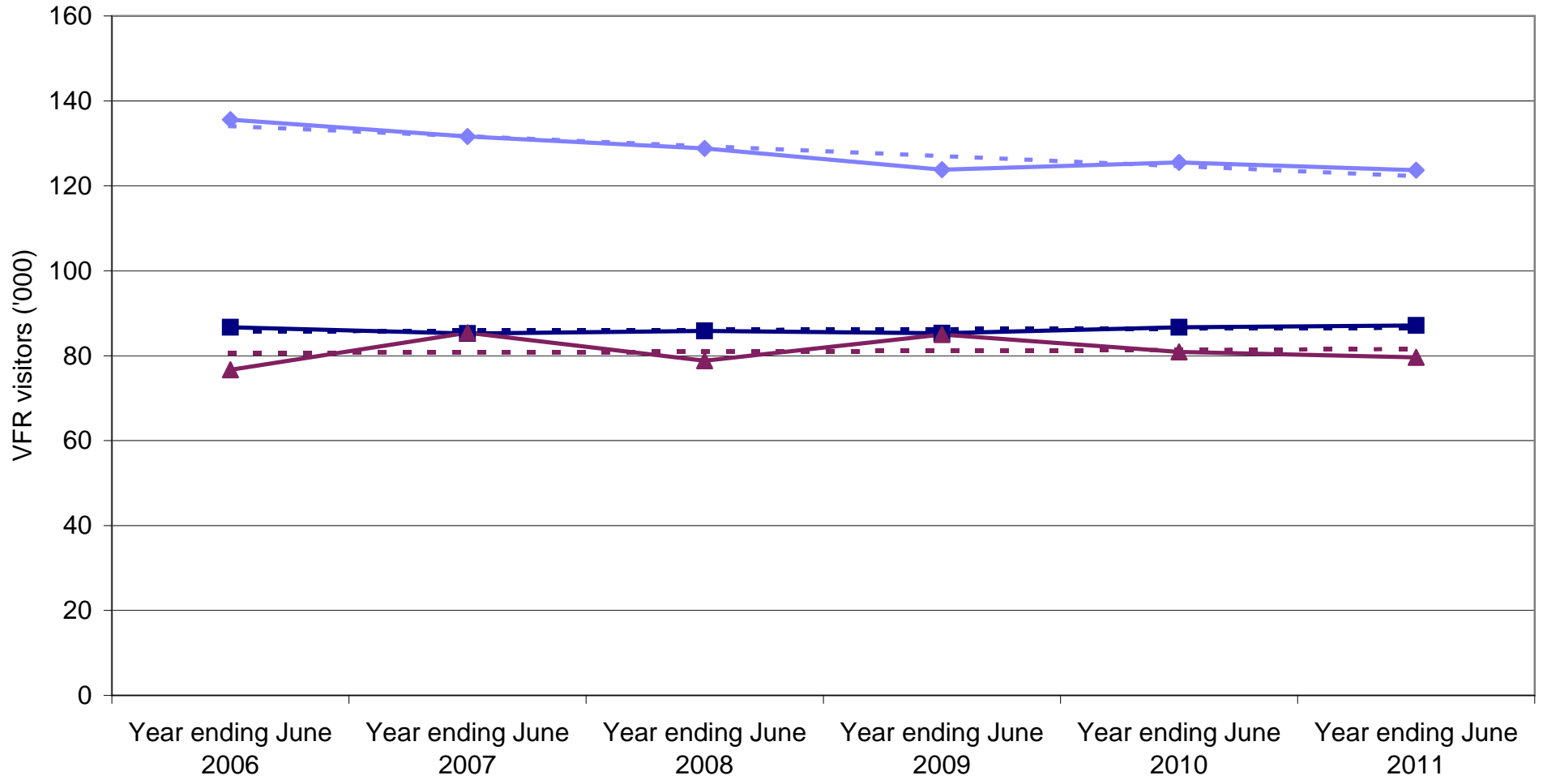
State market share of UK holiday visitors to Australia



State market share of UK holiday nights to Australia

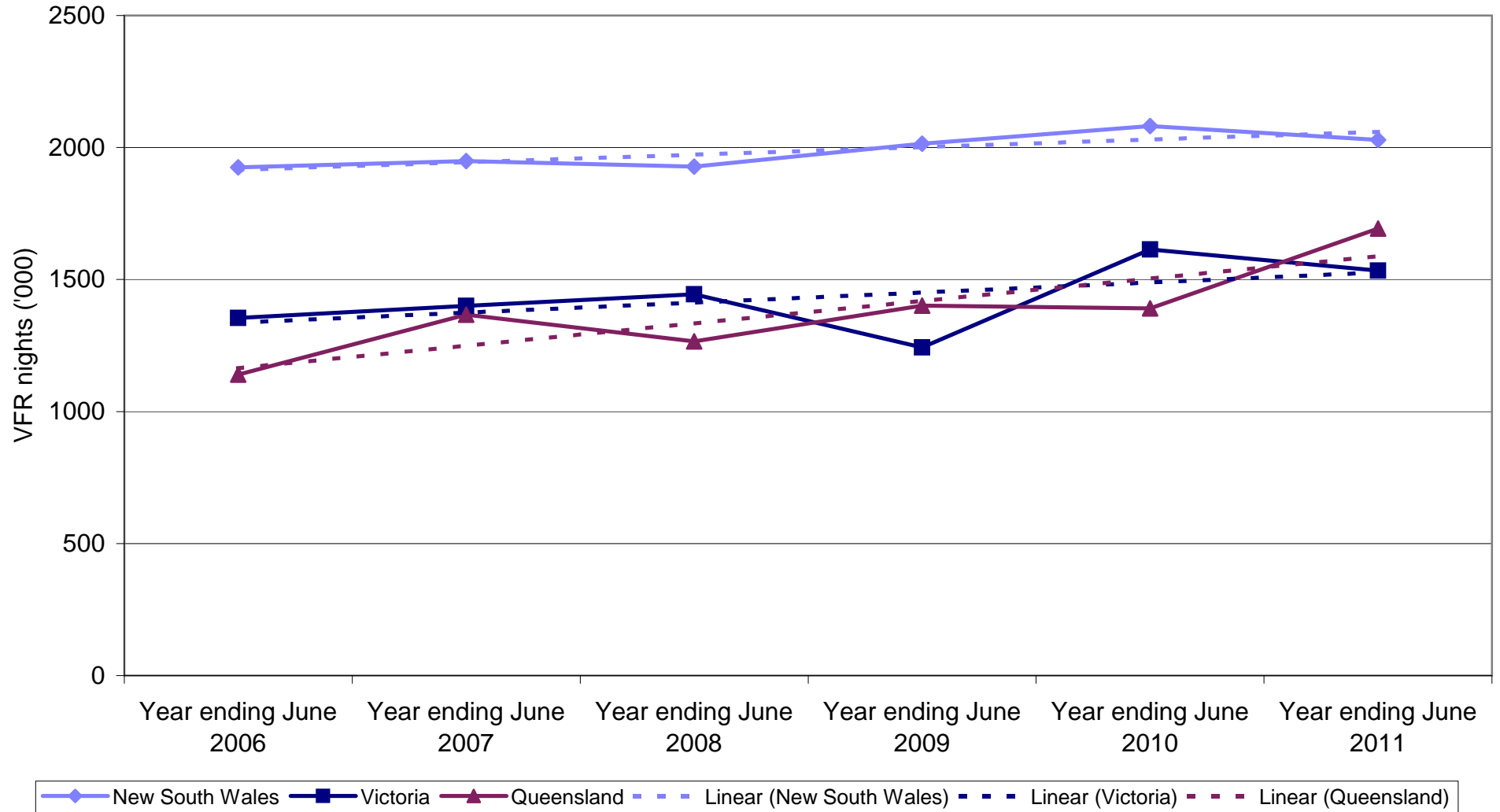


UK VFR visitors by State visited

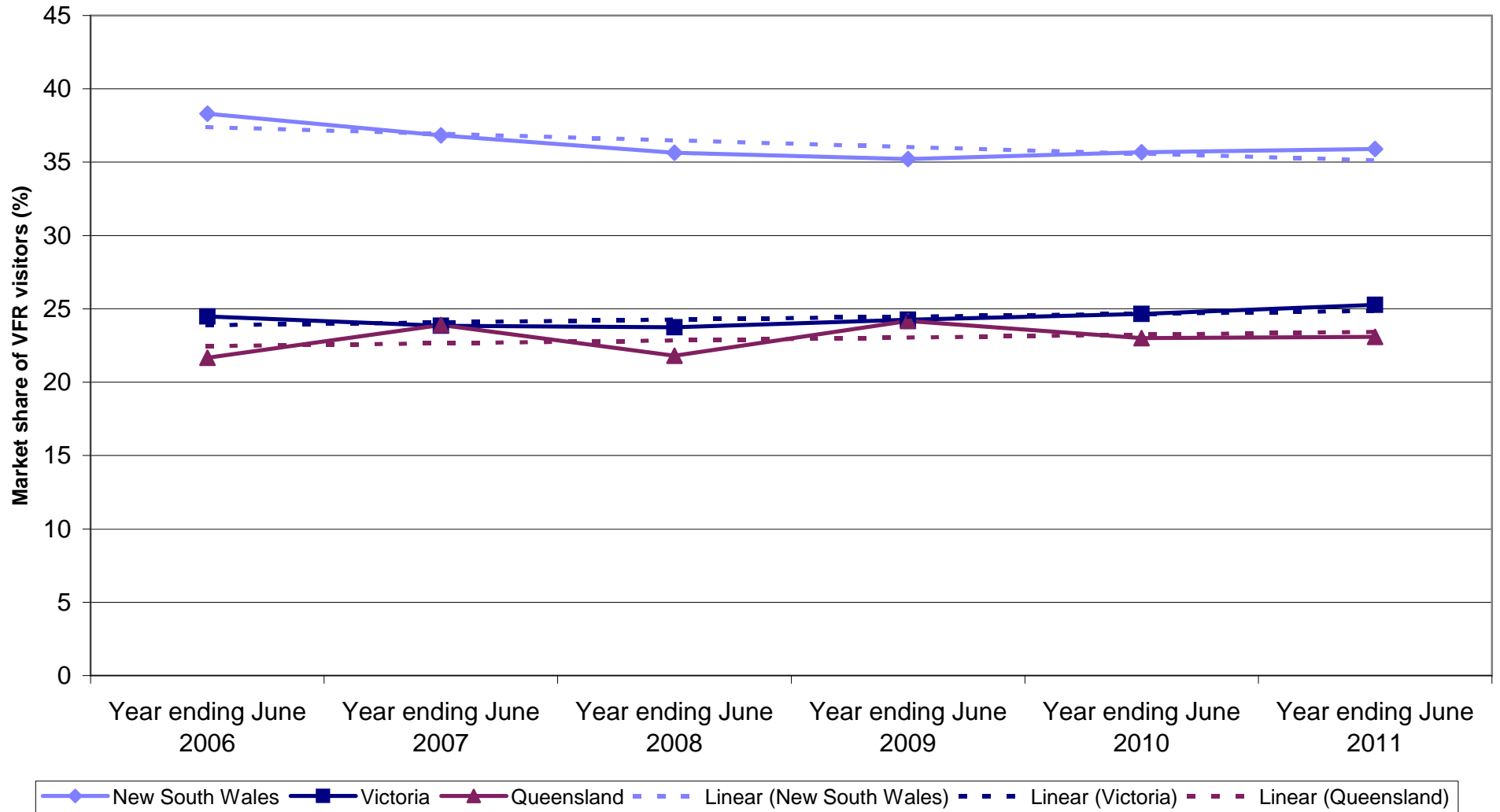


◆ New South Wales
 ■ Victoria
 ▲ Queensland
 - - - Linear (New South Wales)
 - - - Linear (Victoria)
 - - - Linear (Queensland)

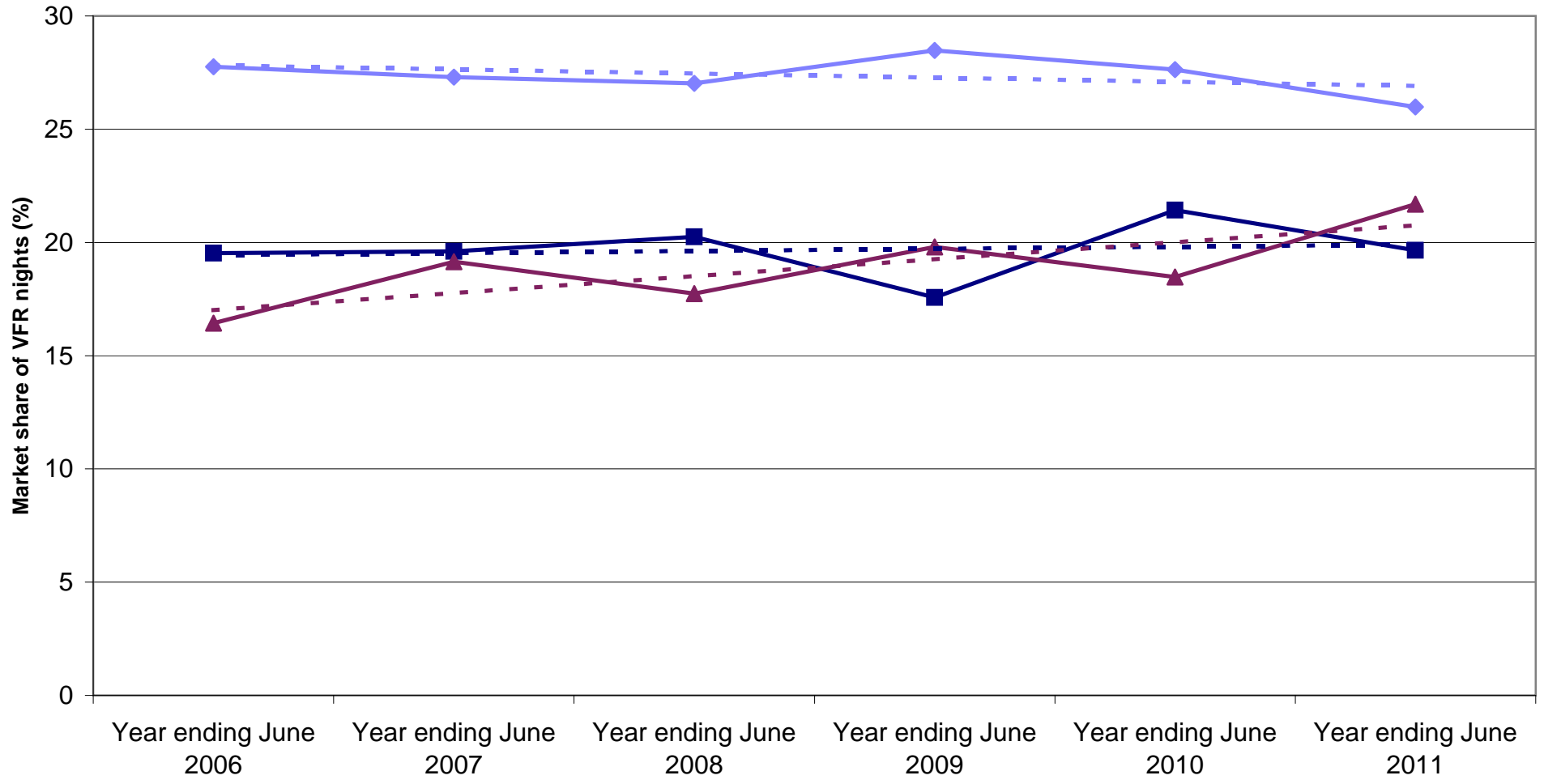
UK VFR nights by State visited



State market share of UK VFR visitors to Australia

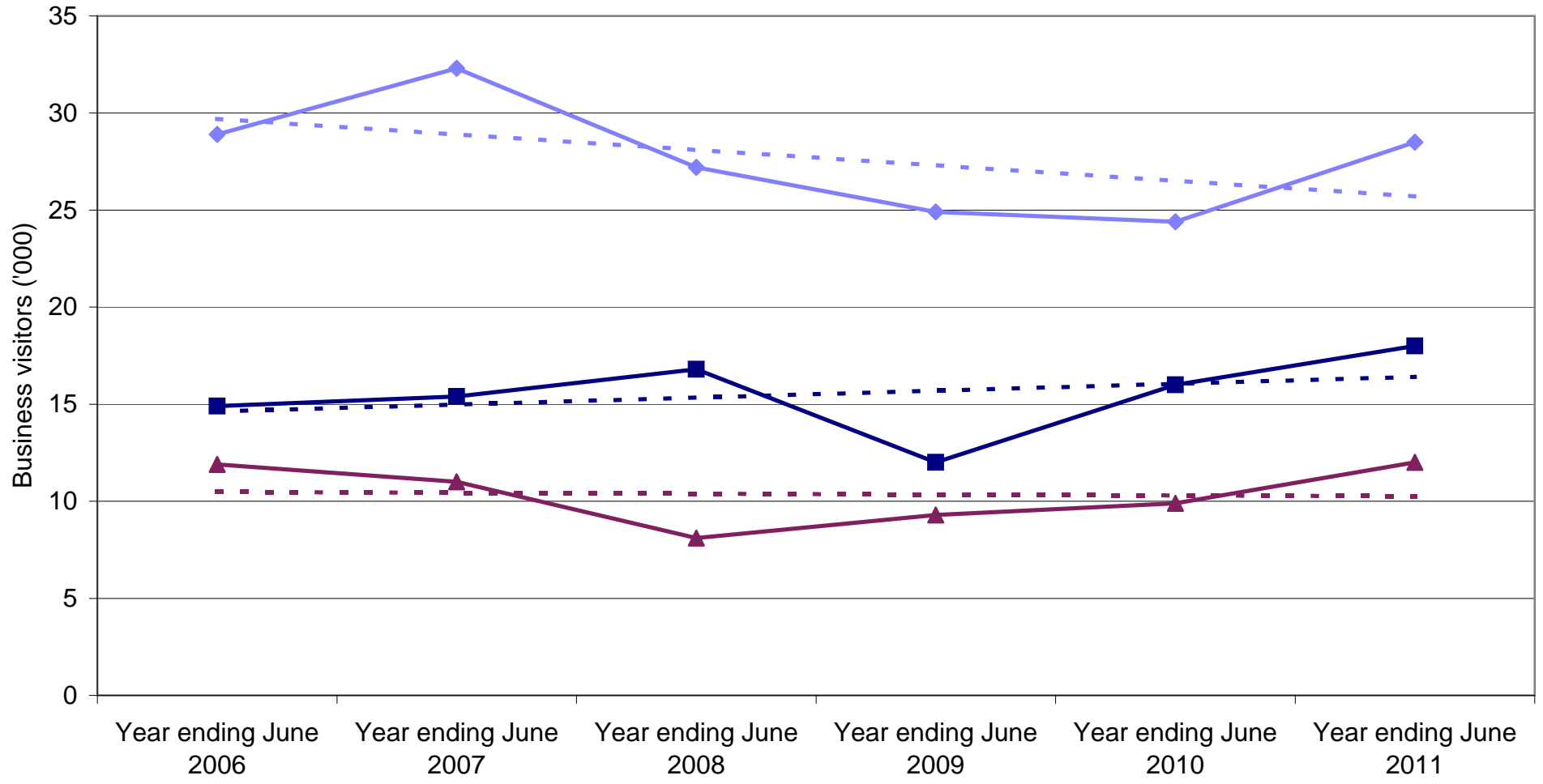


State market share of UK VFR nights to Australia



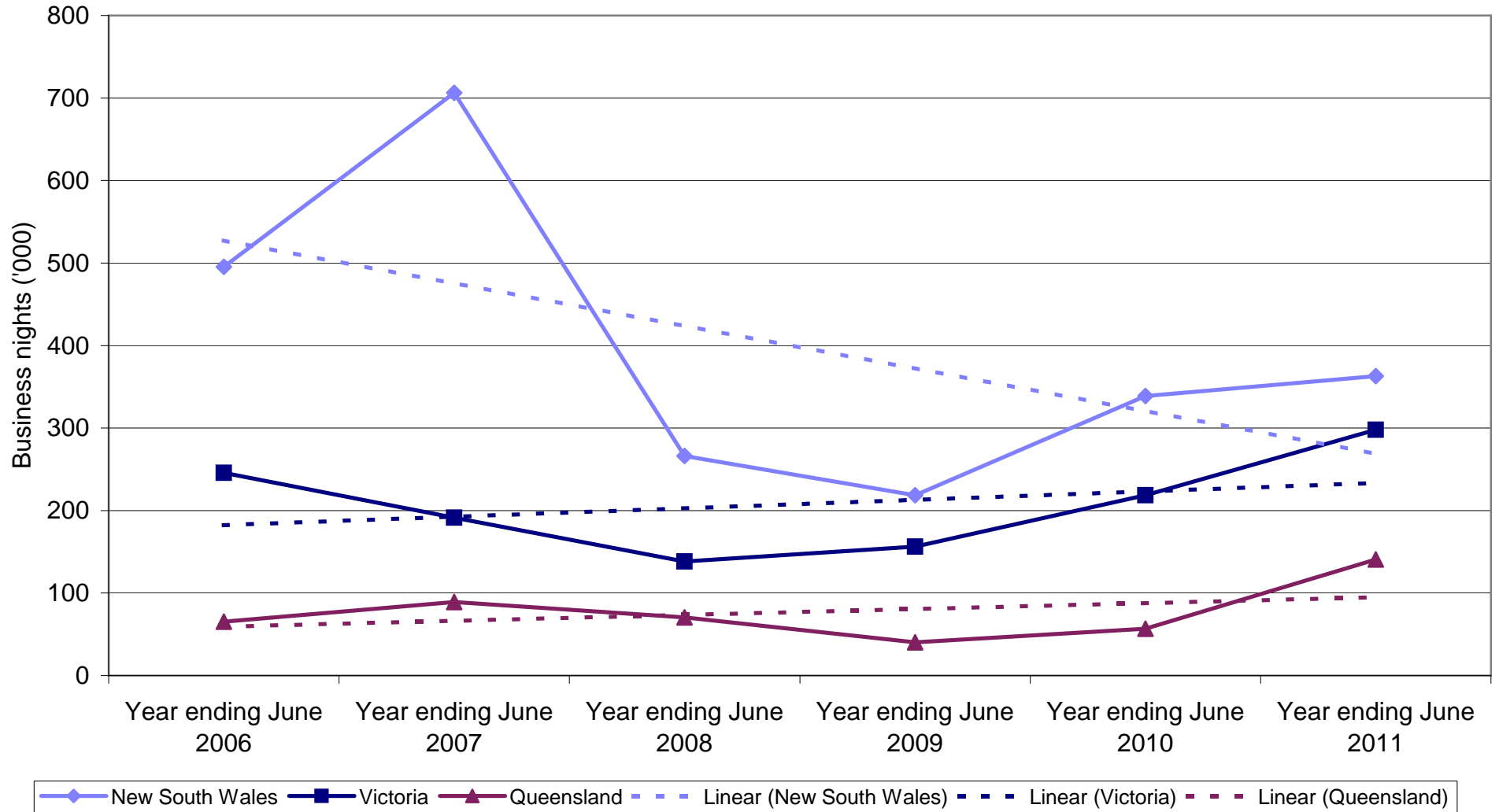
◆ New South Wales
 ■ Victoria
 ▲ Queensland
 - - - Linear (New South Wales)
 - - - Linear (Victoria)
 - - - Linear (Queensland)

UK Business visitors by State visited

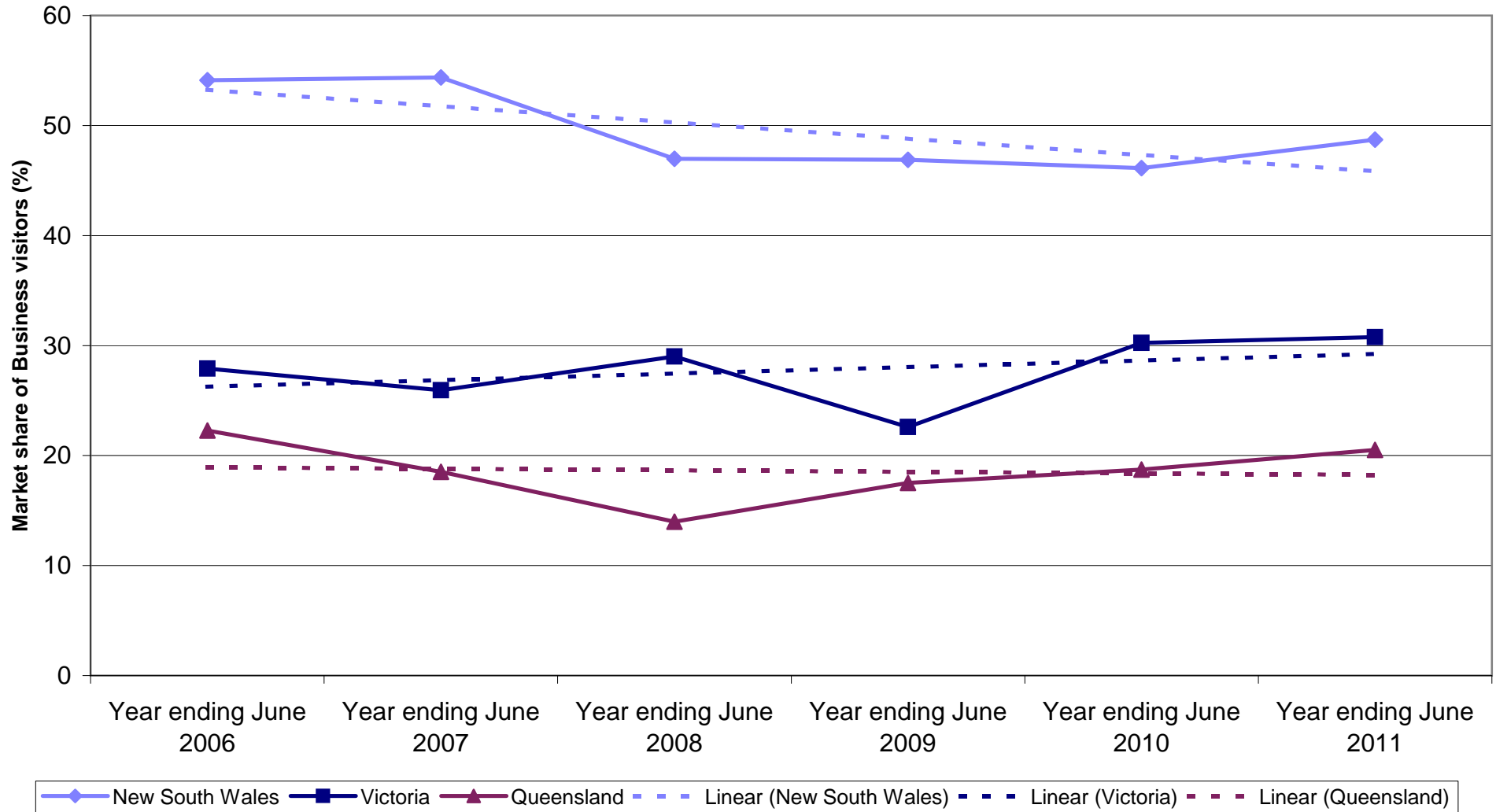


Legend: New South Wales (solid blue line with diamond markers), Victoria (solid dark blue line with square markers), Queensland (solid maroon line with triangle markers), Linear (New South Wales) (dashed blue line), Linear (Victoria) (dashed dark blue line), Linear (Queensland) (dashed maroon line).

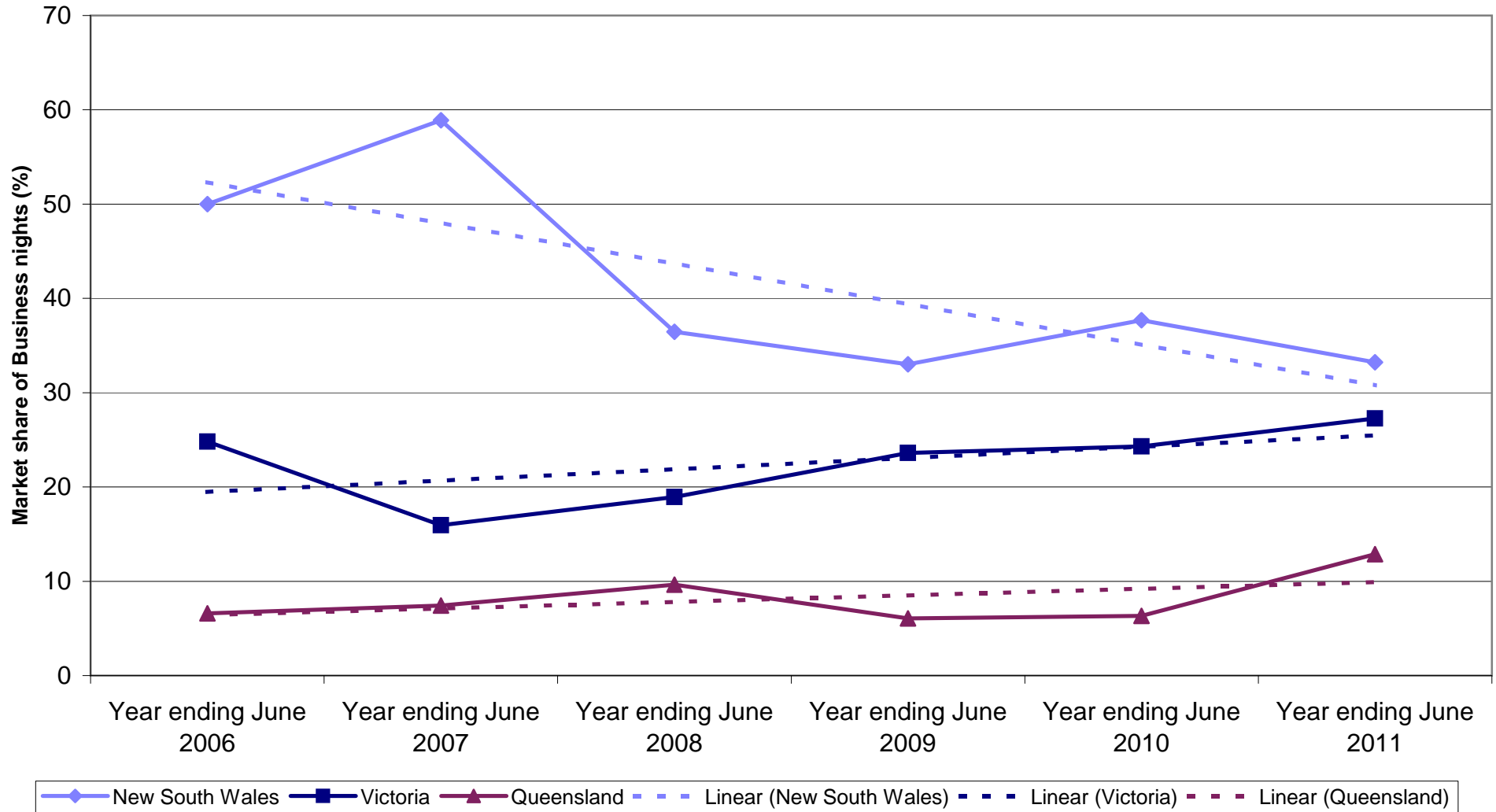
UK Business nights by State visited



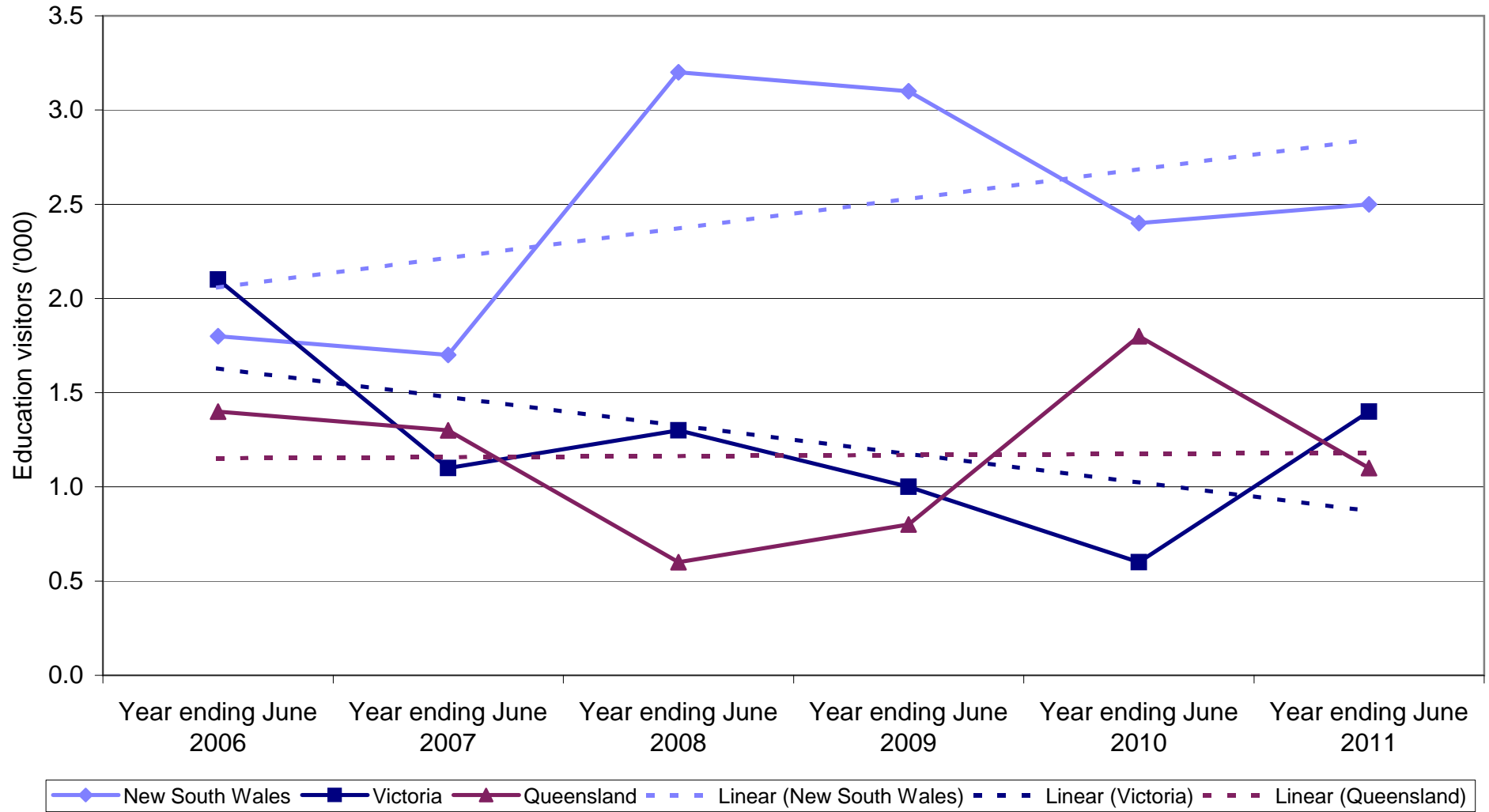
State market share of UK Business visitors to Australia



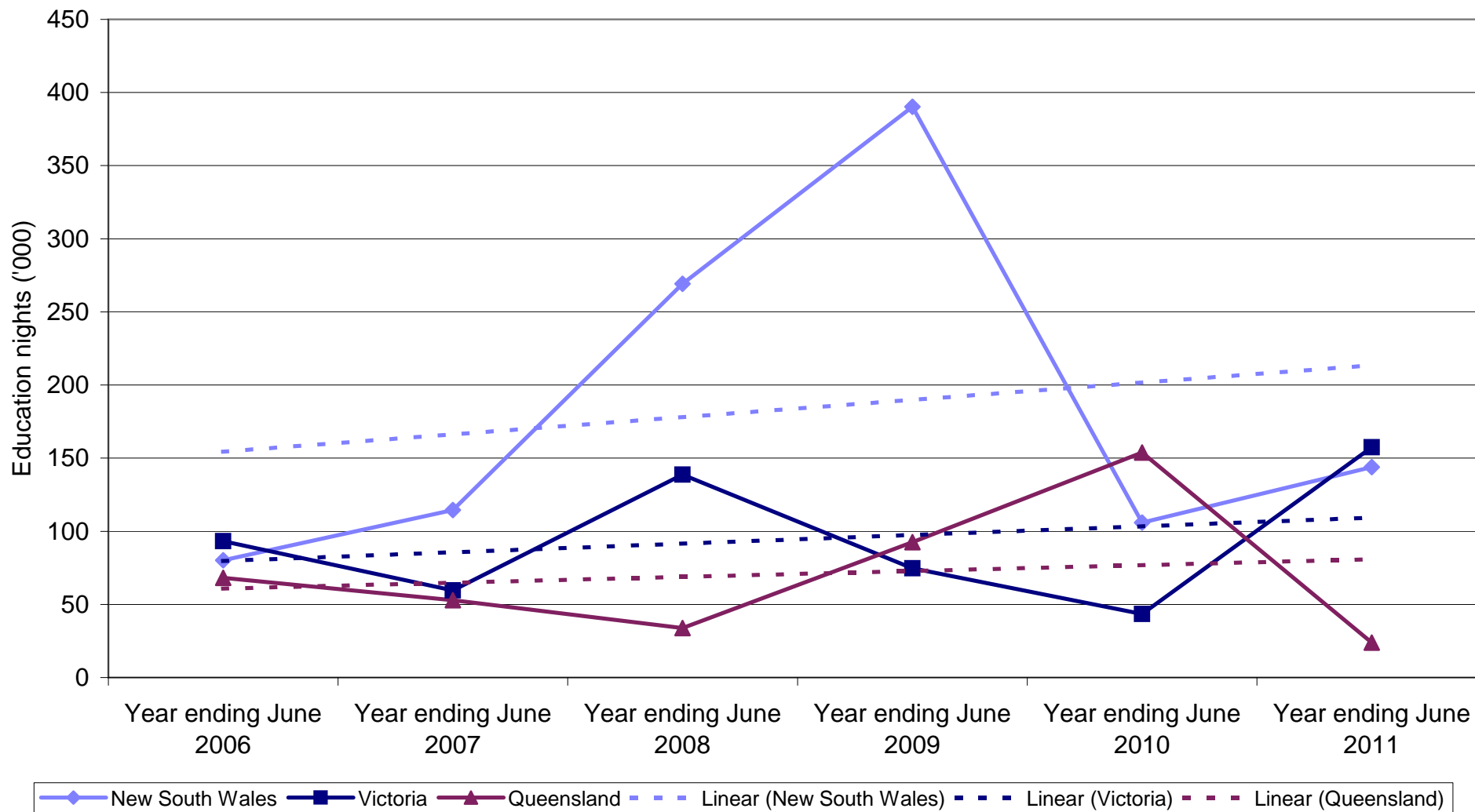
State market share of UK Business nights to Australia



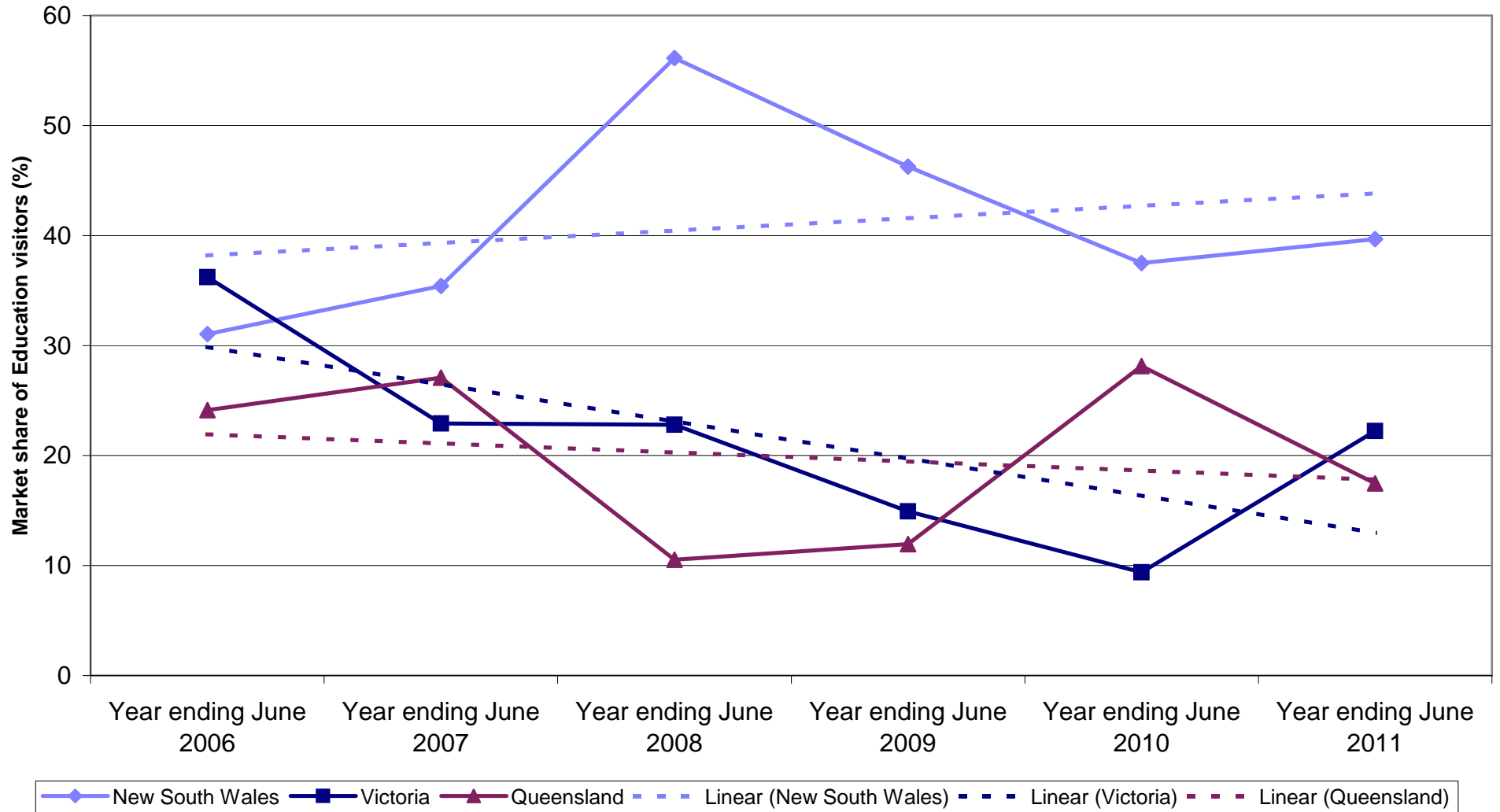
UK Education visitors by State visited



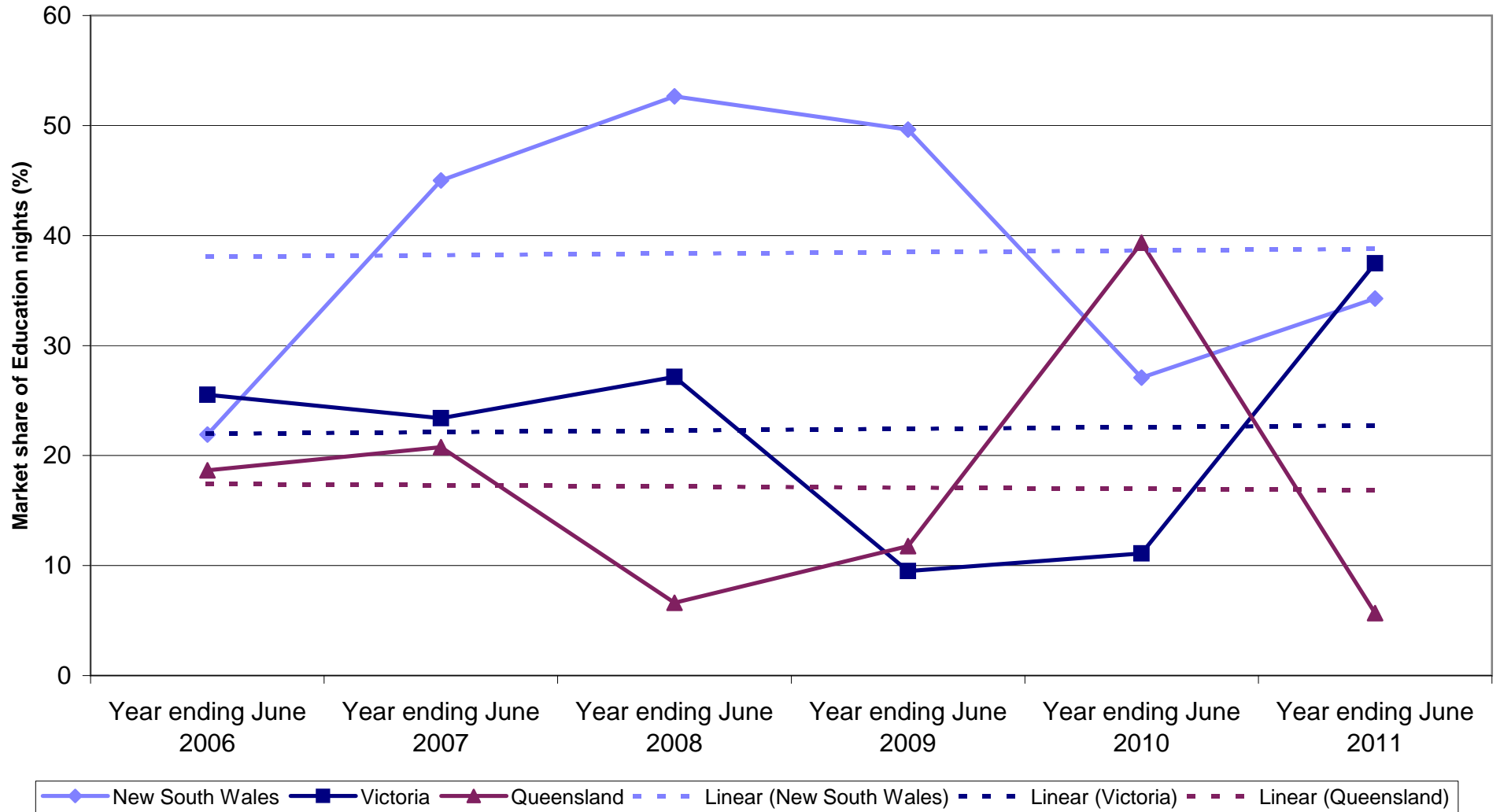
UK Education nights by State visited



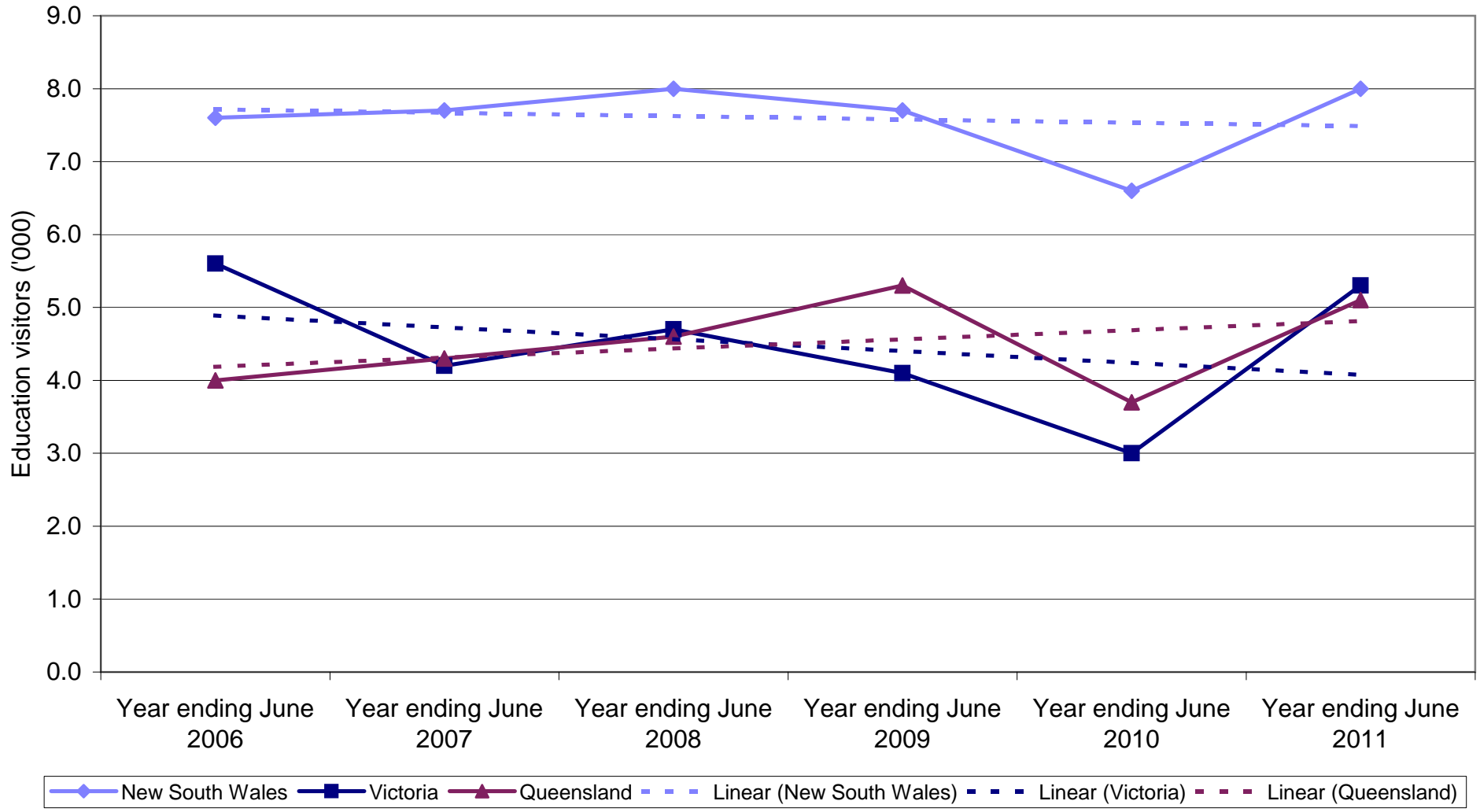
State market share of UK Education visitors to Australia



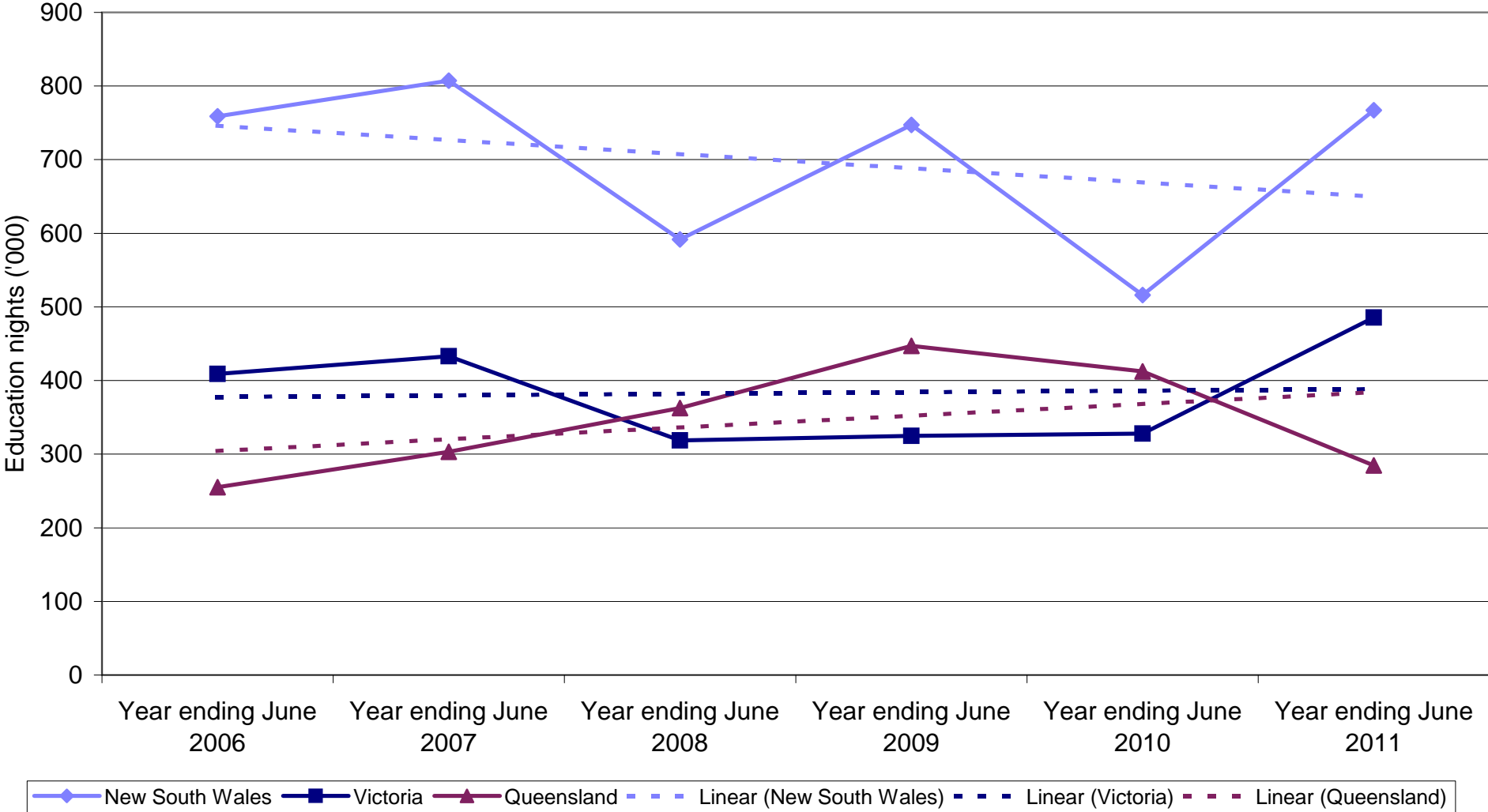
State market share of UK Education nights to Australia



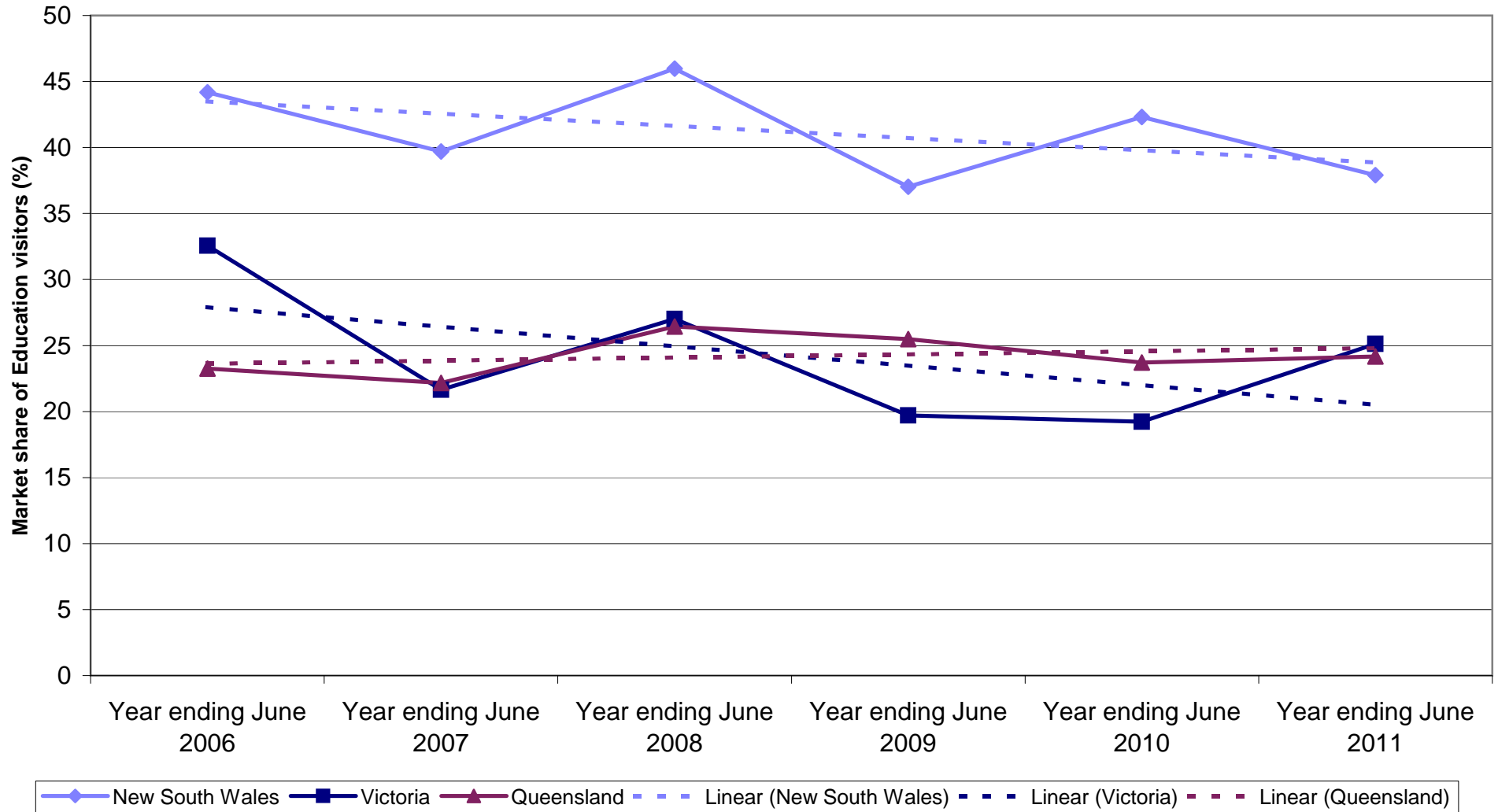
UK Employment visitors by State visited



UK Employment nights by State visited



State market share of UK Employment visitors to Australia



State market share of UK Employment nights to Australia

